

Arctic and Subarctic

Object ID: T0225

Object: Effigy, Polar Bear Effigy

Artist:

Material: Walrus ivory

Dimensions: Ht: 1.750 W: 1.000

L: 4.500

Dimensions Note: Ht: 1 3/4"



Object ID: T0229a-b

Object: Dance Fans

Artist:

Material: green and white pigments/pebble//Wood/duck tail feathers/snowy owl feathers/caribou fur

Dimensions:

Dimensions Note: Ht: a) 13 3/4" , b) 14"



Object ID: T0231

Object: Nepcetat Mask

Artist:

Material: Bearded sealskin thong/ochre/seal blood/blue, white, ash pigments//Wood/swan feathers/old squaw duck/snowy owl feathers/fox teeth

Dimensions: Ht: 22.000 W: 33.000 D: 4.750

Dimensions Note: Ht: 22"



Object ID: T0235

Object: Hat

Artist:

Material: Wood (cedar?)/tanned hide/rush/bone/Long-tailed Jaeger

Dimensions: Ht: 12.000 W: 9.250

L: 8.250

Dimensions Note: Ht: 12"



Arctic and Subarctic

Object ID: T0237a-e

Object: Outfit

Artist:

Material: Tanned/smoked caribou hide/porcupine quills/eleagnus seeds/sinew

Dimensions: Ht: 19.000

Dimensions Note: Ht: a) hood: 19"



Object ID: T0591

Object: Harpoon Counterweight

Artist:

Material: Ivory/pigment

Dimensions: Ht: 3.000 W: 3.750 D: 0.750

Dimensions Note: Ht: 3"



Object ID: T0600

Object: Mask

Artist:

Material: sandhill crane feathers/caribou fur/white clay & black pigments//Cedar wood/cedar bark/duck feathers/snowy owl feathers

Dimensions: Ht: 21.500 W: 30.000

Dimensions Note: Ht: 21 1/2"



Object ID: T0605

Object: Goggles

Artist:

Material: Wood/twine

Dimensions: Ht: 1.250 D: 1.000 L: 5.250

Dimensions Note: Ht: 1 1/4"



Arctic and Subarctic

Object ID: T0612a-b

Object: Basket

Artist:

Material: Wild rye grass (*elymus mollis*)/wool yarns/dyes

Dimensions: Ht: 7.500

Dimensions Note: Ht: 7 1/2"

Dia: 8.000



Object ID: T0663a-b

Object: Moccasins

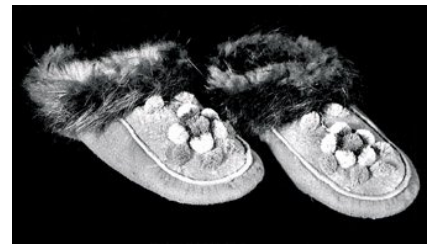
Artist:

Material: Smoke-tanned moosehide/dyed moosehair/beaver fur/thread

Dimensions: W: 4.000

L: 8.250

Dimensions Note: L: 8 1/4"



Object ID: T0713

Object: Engraved Walrus Tusk

Artist: Happy Jack

Material: walrus tusk/graphite

Dimensions: Ht: 3.500

D: 2.250

L: 28.250

Dimensions Note: Ht: 3 1/2"



Object ID: T0763

Object: Parka (Kamleika)

Artist:

Material: Walrus intestine/sinew/Bearded sealskin thong/walrus fur/analine dyes

Dimensions: W: 58.000

L: 44.000

Dimensions Note: L: 44" including hood



Arctic and Subarctic

Object ID: T0801

Object: Bag

Artist:

Material: cotton thread/cotton cloth//Cloth/glass beads/dentalium shell/smoked tanned caribou or moosehide/sinew

Dimensions: Ht: 28.750 W: 6.750

Dimensions Note: Ht: 28 3/4" with strap



Object ID: T0811

Object: Goggles

Artist:

Material: Walrus ivory

Dimensions: Ht: 1.500 W: 5.250 D: 0.500



Total Number of Objects in Section: 14

California and The Great Basin

Object ID: T0137

Object: Dance Skirt

Artist:

Material: cloth ties added at a later date//Deer hide/glass trade beads/abalone shells/black maidenhair fern/bear grass

Dimensions: Ht: 34.000 W: 35.000

Dimensions Note: Ht: 34"



Object ID: T0144

Object: Basket

Artist:

Material: quail feathers//Deer grass/willow or sumac/yucca root/devil's claw/woolen yarn

Dimensions: Ht: 6.750

Dia: 13.500

Dimensions Note: Ht: 6 3/4"



Object ID: T0487

Object: Cap

Artist:

Material: staghorn lichen (wolf moss) dye/spruce root/hazel sticks//Bear grass/black maidenhair fern/porcupine quills

Dimensions: Ht: 4.000

Dia: 7.000

Dimensions Note: Ht: 4"



Object ID: T0511

Object: Jump Dance Basket

Artist:

Material: Hazel sticks/spruce root/bear grass/maidenhair fern stem/deerhide/pigments

Dimensions: Ht: 5.500 W: 3.750

L: 15.000

Dimensions Note: Ht: 5 1/2"



California and The Great Basin

Object ID: T0752

Object: Basket, The Ferns

Artist: Possock, Scees Bryant

Material: bracken fern root (*Pteridium aquilinum*)/Willow (*Salix* spp.)/western redbud (*Cercis occidentalis*)

Dimensions: Ht: 7.500

Dia: 10.500

Dimensions Note: Ht: 7 1/2"



Object ID: T0782

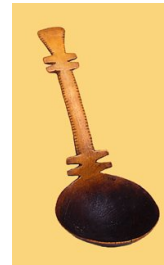
Object: Spoon

Artist:

Material: Elk antler horn

Dimensions: Ht: 6.500 W: 2.500 D: 2.000

Dimensions Note: Ht: 6 1/2"



Object ID: T0783

Object: Spoon

Artist:

Material: Elk antler horn

Dimensions: Ht: 7.250 W: 2.750 D: 1.500

Dimensions Note: Ht: 7 1/4"



Object ID: T0797

Object: Gambling Tray

Artist: Francisco, Mrs. Dick

Material: red bud (*Cercis occidentalis*)/Marsh grass root (*Cladium mariscus*)/bracken fern root

Dimensions:

Dia: 31.000

Dimensions Note: Dia: 31"



California and The Great Basin

Object ID: T0815a-b

Object: Basket

Artist: Hickox, Elizabeth Conrad

Material: Myrtlestick/split willow or wild grape root/maidenhair fern/porcupine quill

Dimensions: Ht: 3.375

Dia: 3.375

Dimensions Note: Ht: 3 3/8"



Object ID: T0816a-b

Object: Basket

Artist: Hickox, Louise Bernice

Material: Myrtle sticks/split willow or wild grape root/beargrass/maidenhair fern/por

Dimensions: Ht: 8.000

Dia: 7.000

Dimensions Note: Ht: 8"



Object ID: T0817

Object: Tray

Artist: Jackson, Salena

Material: Willow, redbud;

Dimensions:

Dia: 17.500

Dimensions Note: Dia: 17 1/2"



Total Number of Objects in Section: 11

Northwest Coast

Object ID: T0148

Object: Bowl

Artist:

Material: Bighorn sheep horn

Dimensions: Ht: 5.000 W: 8.500

L: 6.500

Dimensions Note: Ht: 5"



Object ID: T0155a-b

Object: Basket

Artist: Jacobson, Nellie (possibly)

Material: Red cedar bark/bear grass/dye

Dimensions: Ht: 2.000 W: 3.000

Dimensions Note: Ht: 2"



Object ID: T0158

Object: Mask

Artist:

Material: Wood (Alder)/human hair/paint (Reckett's Blue)

Dimensions: Ht: 12.000 W: 8.000 D: 5.250

Dimensions Note: Ht: 12"



Object ID: T0160

Object: Mask

Artist:

Material: forged iron nails/sinew/bite loop//Red cedar/black bear skin/human hair/black and red paint with graphite

Dimensions: Ht: 12.375 W: 10.250 D: 7.000

Dimensions Note: Ht: 12 3/8"



Northwest Coast

Object ID: T0162

Object: Potlatch Figure

Artist:

Material: Red cedar/paint/iron nails

Dimensions: Ht: 50.000 W: 13.500 D: 15.000

Dimensions Note: Ht: 50"



Object ID: T0167

Object: Feast Ladle

Artist:

Material: Alder/paint

Dimensions: W: 9.000 D: 9.000 L: 35.250

Dimensions Note: L: 35 1/4"



Object ID: T0170

Object: Bowl

Artist:

Material: Alder wood/red turban snail opercula shells

Dimensions: Ht: 7.500 W: 8.250 L: 13.500

Dimensions Note: Ht: 7 1/2"



Object ID: T0171

Object: Club

Artist:

Material: Caribou or elk antler

Dimensions: W: 5.000 D: 1.000 L: 16.500

Dimensions Note: L: 16 1/2"



Northwest Coast

Object ID: T0177

Object: Frontlet

Artist:

Material: native copper repair on back/twine/string//Maple/abalone shell/red and black paint - 20th century

Dimensions: W: 8.000 D: 3.500 L: 8.750

Dimensions Note: L: 8 3/4"



Object ID: T0181

Object: Dish

Artist:

Material: Dall Mountain Sheep horn

Dimensions: Ht: 4.750 W: 6.500 L: 8.750 Dia: 4.000

Dimensions Note: Ht: 4 3/4"



Object ID: T0186

Object: Female Figure

Artist:

Material: Hardwood (possibly crabapple)/wool/red and black paint

Dimensions: Ht: 11.000 W: 5.000 D: 2.875

Dimensions Note: Ht: 11"



Object ID: T0190

Object: Dagger Hilt (?)

Artist:

Material: Walrus ivory/iron band/later iron screw

Dimensions: Ht: 4.000 W: 1.000 D: 1.500

Dimensions Note: Ht: 4"



Northwest Coast

Object ID: T0199

Object: Bent-Corner Dish

Artist:

Material: Yew/red cedar/fiber cordage

Dimensions: W: 9.000 L: 13.000

Dimensions Note: L: 13"



Object ID: T0214

Object: Mask

Artist:

Material: Alder/copper/red turban snail opercula shell/bear skin/leather straps/paint

Dimensions: Ht: 9.500 W: 7.000 D: 3.500

Dimensions Note: Ht: 9 1/2"



Object ID: T0523

Object: Mask

Artist:

Material: Red cedar/leather straps/iron nails

Dimensions: Ht: 9.000 L: 26.250

Dimensions Note: Ht: 9" not including fringe



Object ID: T0555

Object: Dagger

Artist:

Material: Horn/copper/abalone shell/leather strips

Dimensions: Ht: 15.000 W: 1.000 L: 3.000

Dimensions Note: Ht: 15"



Northwest Coast

Object ID: T0712

Object: Chilkat Robe

Artist:

Material: Handspun mountain goat wool/cedar bark/linen thread/Native dye

Dimensions: Ht: 52.000 W: 72.000

Dimensions Note: Ht: 52"



Object ID: T0715

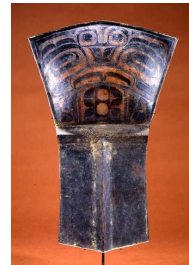
Object: Copper

Artist:

Material: Copper sheet/paint/resin?

Dimensions: Ht: 25.500 W: 16.000

Dimensions Note: Ht: 25 1/2"



Object ID: T0765

Object: War Helmet

Artist:

Material: Wood (possibly spruce)/human hair/pigment

Dimensions: Ht: 9.750 W: 8.875 D: 11.750

Dimensions Note: Ht: 9 3/4"



Object ID: T0766

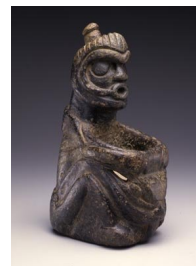
Object: Stone Figure

Artist:

Material: Steatite(?)

Dimensions: Ht: 14.750 W: 5.500 D: 8.375

Dimensions Note: Ht: 14 3/4"



Northwest Coast

Object ID: T0768

Object: Oystercatcher Rattle

Artist:

Material: Wood/ermine/cord

Dimensions: Ht: 5.500 W: 4.500

L: 13.250

Dimensions Note: Ht: 5 1/2"



Object ID: T0769

Object: Rattle

Artist:

Material: Wood/twine/sinew/brass tack/pebble

Dimensions: Ht: 4.000 W: 4.125

L: 12.750

Dimensions Note: Ht: 4"



Object ID: T0790

Object: Amulet

Artist:

Material: Sperm Whale Tooth

Dimensions: W: 2.000

L: 5.750

Dimensions Note: L: 5 3/4"



Object ID: T0807

Object: Bowl

Artist:

Material: Spruce wood/pigments

Dimensions: Ht: 12.000 W: 8.500 D: 9.500

Dimensions Note: Ht: 12"



Northwest Coast

Object ID: T0818

Object: Hat

Artist: Edenshaw, Charles--Edenshaw, Isabella

Material: Spruce root/paint

Dimensions: Ht: 7.500

Dia: 16.000



Total Number of Objects in Section: 25

Plains, Prairie and Plateau

Object ID: T0048

Object: Shield

Artist:

Material: trade cloth/pigments//Buffalo rawhide/antelope skin/porcupine quills/eagle and hawk feathers

Dimensions:

Dia: 22.500

Dimensions Note: Dia: 22 1/2"



Object ID: T0058a-b

Object: Pipe

Artist:

Material: earth pigment/cotton thread and sinew//Ash wood stem/catlinite/porcupine quills/dyed horse hair/bird skin

Dimensions:

W: 1.500

L: 22.000

Dimensions Note: L: 22"



Object ID: T0059

Object: Headdress

Artist:

Material: Eagle feathers/fluffs/felt/glass beads/weasel tassels/cotton bunting

Dimensions: Ht: 89.000

Dimensions Note: Ht: 89"



Object ID: T0064

Object: Shirt

Artist:

Material: human and horsehair fringes/sinew thread//Antelope hide/porcupine quills/pony beads/red cloth

Dimensions: Ht: 43.000 W: 56.500

Dimensions Note: Ht: 43"



Plains, Prairie and Plateau

Object ID: T0065

Object: Shirt

Artist:

Material: rabbit fur//Buffalo skin/pigment/porcupine quills/tin cones/glass and gourd beads

Dimensions: Ht: 19.500 W: 20.000

Dimensions Note: Ht: 19 1/2"



Object ID: T0067

Object: Hair Drop

Artist:

Material: Porcupine quills/brass beads/glass beads/tin cones/feathers/horsehair

Dimensions: W: 2.375

L: 29.000

Dimensions Note: L: 29"



Object ID: T0069

Object: Dress

Artist:

Material: Buckskin/glass beads/tin cones

Dimensions: Ht: 27.000 W: 22.000

Dimensions Note: Ht: 27"



Object ID: T0077

Object: Cradle

Artist:

Material: Hide/glass beads/wood/German silver tacks/woolen cloth/cotton

Dimensions: Ht: 39.500 W: 12.750

Dimensions Note: Ht: 39 1/2"



Plains, Prairie and Plateau

Object ID: T0081a-b

Object: Bag

Artist: Fogarty, Joyce Growing Thunder

Material: cotton/ribbon/glass beads/brass//Commercial leather/native tanned leather/otterhide/rawhide/woolen cloth

Dimensions: Ht: 56.000 W: 27.500

Dimensions Note: Ht: 56"



Object ID: T0088a-b

Object: Knife and Sheath

Artist:

Material: Sheath: hide/porcupine quills/sinew//Knife: steel/African buffalo horn/brass and bone fittings;

Dimensions: Ht: 13.750

Dimensions Note: Ht: 13 3/4"



Object ID: T0092

Object: Bag

Artist:

Material: Caribou hide/glass beads/silk thread/woolen yarn/cotton

Dimensions: Ht: 18.500 W: 9.500

Dimensions Note: Ht: 18 1/2"



Object ID: T0095

Object: Case

Artist:

Material: Rawhide/hide/pigments

Dimensions: Ht: 11.000 W: 14.000

Dimensions Note: Ht: 11"



Plains, Prairie and Plateau

Object ID: T0096

Object: Woman's Dress

Artist:

Material: Deer hide/pony beads/sinew thread/dentalium shells/pigment

Dimensions: Ht: 78.500 W: 53.000

Dimensions Note: Ht: 78 1/2"



Object ID: T0097

Object: Horse Mask

Artist:

Material: feathers/brass-framed mirror/hide/cotton thread/ermine//Woolen cloth/cotton/glass beads/brass button/dyed horsehair/silk ribbons

Dimensions: Ht: 40.000

L: 32.000

Dimensions Note: Ht: 40"



Object ID: T0338

Object: Saddle

Artist:

Material: Commercial saddle/glass beads/hide/tin cones/horse hair/cloth

Dimensions: Ht: 30.500 W: 16.500 D: 11.000

Dimensions Note: Ht: 30 1/2"



Object ID: T0360

Object: Possible Bag

Artist:

Material: Hide/glass beads/tin cones/horse hair/dye

Dimensions: Ht: 15.250 W: 21.500 D: 3.500

Dimensions Note: Ht: 15 1/4"



Plains, Prairie and Plateau

Object ID: T0393

Object: Arapaho Buffalo Robe

Artist:

Material: Buffalo hide/paint

Dimensions: Ht: 77.000 W: 94.000

Dimensions Note: Ht: 77"



Object ID: T0614

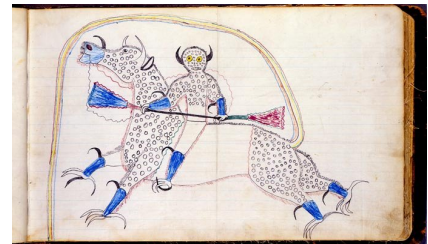
Object: Drawing Book

Artist: Black Hawk (Chief)

Material: Ink and pencil on paper//Paper, ink, pencil

Dimensions: Ht: 10.250 W: 16.500 D: 1.750

Dimensions Note: H: 10 1/4"



Object ID: T0705

Object: Gun Case

Artist:

Material: Buckskin/glass beads/cloth

Dimensions: W: 50.000

L: 46.000

Dimensions Note: L: 46"



Object ID: T0800

Object: Club

Artist:

Material: Wood/brass tacks/pigment

Dimensions:

L: 26.000

Dimensions Note: L: 26"



Plains, Prairie and Plateau

Object ID: T0809

Object: Blanket

Artist:

Material: Wool/silk ribbons/beads/thread

Dimensions: Ht: 43.750 W: 65.750 D: 2.750

Dimensions Note: Ht: 43 3/4"



Total Number of Objects in Section: 21

Southwest

Object ID: T0099

Object: Bowl

Artist:

Material: Ceramic/organic pigment

Dimensions: Ht: 4.000

Dimensions Note: Ht: 4"

Dia: 8.000



Object ID: T0101

Object: Shell Pendant

Artist:

Material: Spondylus princeps Broderip shell/turquoise/turquoise and clam shell beads

Dimensions: Ht: 4.000 W: 4.500 D: 1.500

Dimensions Note: Ht: 4"



Object ID: T0108

Object: Manta

Artist:

Material: Wool/cotton/dyes

Dimensions: Ht: 59.000 W: 41.750

Dimensions Note: Ht: 59"



Object ID: T0123

Object: Blanket

Artist:

Material: Wool/cochineal dyed ravelled and commercial yarn/orange-red commercial dye

Dimensions: Ht: 82.000 W: 49.000

Dimensions Note: Ht: 82"



Southwest

Object ID: T0128

Object: Serape

Artist:

Material: indigo-dyed blue, natural white handspun yarn//4-ply Germantown yarns/synthetic red/green/yellow and tan dyes

Dimensions: Ht: 90.000 W: 52.000

Dimensions Note: Ht: 90"



Object ID: T0428

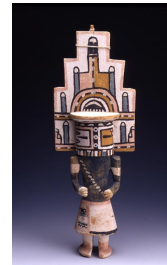
Object: Kachina

Artist:

Material: Cottonwood root/pigment

Dimensions: Ht: 16.000 W: 5.250 D: 4.000

Dimensions Note: Ht: 16"



Object ID: T0455

Object: Jar

Artist:

Material: Ceramic/pigment

Dimensions: Ht: 10.250

Dia: 12.750

Dimensions Note: Ht: 10 1/4"



Object ID: T0469

Object: Basket

Artist:

Material: Three-rod coils/willow/devil's claw/yucca root

Dimensions: Ht: 3.250

Dia: 17.750

Dimensions Note: Ht: 3 1/4"



Southwest

Object ID: T0575

Object: Jar

Artist: Martinez, Maria--Martinez, Julian

Material: Ceramic/pigment

Dimensions: Ht: 11.250 W: 12.000

Dimensions Note: Ht: 11 1/4"

Dia: 12.500



Object ID: T0617

Object: Necklace

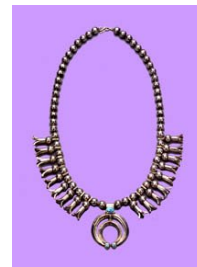
Artist:

Material: Silver/turquoise

Dimensions:

L: 16.000

Dimensions Note: L: 16"



Object ID: T0711

Object: Dance Kilt

Artist:

Material: Commercial tanned leather/pigments/brass/copper and tin cones

Dimensions: Ht: 20.000 W: 48.000

Dimensions Note: Ht: 20"



Object ID: T0764

Object: Saddlebag

Artist:

Material: Hide/trade cloth/ochre/pigment/metal/cord

Dimensions: W: 18.000

L: 95.000

Dimensions Note: L: 95" with leather fringe



Southwest

Object ID: T0770

Object: Jar, Sikyatki Jar

Artist:

Material: Ceramic, pigment//Ceramic/pigment

Dimensions: Ht: 8.875

Dimensions Note: Ht: 8 7/8"

Dia: 14.875



Object ID: T0771

Object: Bowl

Artist:

Material: Ceramic/pigment

Dimensions: Ht: 4.750

Dimensions Note: Ht: 4 3/4"

Dia: 10.000



Object ID: T0781

Object: Headdress

Artist:

Material: Wood/paint/cord/hide

Dimensions: Ht: 17.125 W: 12.250 D: 0.375

Dimensions Note: Ht: 17 1/8"



Object ID: T0810

Object: Jar

Artist: Nampeyo

Material: clay/pigments

Dimensions: Ht: 5.500

Dimensions Note: Ht: 5 1/2"

Dia: 13.500



Southwest

Object ID: T0830

Object: Pouch

Artist:

Material: Buffalo hide, deer hide, porcupine quills, horsehair, linen thread

Dimensions: W: 4.250 L: 32.000

Dimensions Note: overall length of the pouch with strap is 32"; height of the pouch is



Total Number of Objects in Section: 17

Woodlands

Object ID: T0001

Object: Gorget

Artist:

Material: Marine whelk shell (*Busycon perversum*)

Dimensions: Ht: 4.000 W: 4.250 D: 0.750

Dimensions Note: Ht: 4"



Object ID: T0003

Object: Effigy Jar

Artist:

Material: Carson red on buff/black paint

Dimensions: Ht: 7.750 W: 7.250 D: 7.000

Dimensions Note: Ht: 7 3/4"



Object ID: T0005

Object: Bag

Artist:

Material: red and brown wool yarns//Red trade cloth/cotton backing/blue, white, black beads/silk binding

Dimensions: Ht: 28.500 W: 8.500

Dimensions Note: Ht: 28 1/2"



Object ID: T0008

Object: Bag

Artist:

Material: deer hair tassels//Black-dyed deerskin/porcupine quills/silk binding/tin cones

Dimensions: W: 6.500

L: 20.500

Dimensions Note: L: 20 1/2"



Woodlands

Object ID: T0012

Object: Charm Bag

Artist:

Material: Glass beads/wool yarn/twine

Dimensions: Ht: 4.625 W: 6.250

Dimensions Note: Ht: 4 5/8"



Object ID: T0032

Object: Ladle

Artist:

Material: Wood (Maple)

Dimensions: Ht: 9.500 W: 6.750

Dimensions Note: Ht: 9 1/2"



Object ID: T0038a-b

Object: Moccasins

Artist:

Material: Black-dyed hide/moose hair/silk/cotton thread

Dimensions: Ht: 3.000 W: 3.000 L: 9.500

Dimensions Note: Ht: 3"



Object ID: T0040

Object: Basket

Artist:

Material: Ashwood strips/pigments

Dimensions: Ht: 5.000

Dia: 10.750

Dimensions Note: Ht: 5"



Woodlands

Object ID: T0041

Object: Peaked Cap

Artist:

Material: dyed ostrich feathers//Black and red tradecloth/glass beads/silk ribbons and trim

Dimensions: Ht: 14.750 W: 7.250

Dimensions Note: Ht: 14 3/4"



Object ID: T0309

Object: Shirt

Artist:

Material: Cotton/hooks and eyes

Dimensions: W: 61.000

L: 50.000

Dimensions Note: L: 50"



Object ID: T0630

Object: Coat

Artist:

Material: Caribou skin/pigments/sinew thread

Dimensions: W: 66.000

L: 44.500

Dimensions Note: L: 44 1/2"



Object ID: T0690

Object: Bag

Artist:

Material: Wool/glass beads/silk binding/glazed cotton lining

Dimensions: Ht: 6.750 W: 6.250

Dimensions Note: Ht: 6 3/4"



Woodlands

Object ID: T0753

Object: Wolf Clan Comb by Stan Hill

Artist: Hill, Stan

Material: Moose antler

Dimensions: Ht: 3.000 W: 2.750

Dimensions Note: Ht: 3"



Object ID: T0754

Object: Serpent Hair Comb by Stan Hill

Artist: Hill, Stan

Material: Moose antler

Dimensions: Ht: 3.500 W: 2.500

Dimensions Note: Ht: 3 1/2"



Object ID: T0755

Object: Otter Hair Comb by Stan Hill

Artist: Hill, Stan

Material: Moose antler

Dimensions: Ht: 3.000 W: 1.750

Dimensions Note: Ht: 3"



Object ID: T0756

Object: Bear Hair Comb by Stan Hill

Artist: Hill, Stan

Material: Moose antler

Dimensions: Ht: 3.500 W: 2.375

Dimensions Note: Ht: 3 1/2"



Woodlands

Object ID: T0758
 Object: Cradleboard
 Artist:
 Material: Wood/hide/paint

Dimensions: L: 33.000
 Dimensions Note: L: 33"



Object ID: T0778
 Object: Bag
 Artist:
 Material: Wool stroud/glass beads/silk/thread

Dimensions: Ht: 9.625 W: 8.250
 Dimensions Note: Ht: 9 5/8"



Object ID: T0786
 Object: Sash
 Artist:
 Material: Yarn/white glass beads/thread

Dimensions: W: 8.000 L: 94.000
 Dimensions Note: L: 94" including fringe



Object ID: T0794
 Object: War Club
 Artist:
 Material: Hardwood/brass/iron/copper and shell inlay

Dimensions: L: 24.000
 Dimensions Note: L: 24"



Woodlands

Object ID: T0795

Object: Miniature Settee

Artist:

Material: Birchbark/moosehair/dye

Dimensions: Ht: 6.250

D: 4.000

L: 13.000

Dimensions Note: Ht: 6 1/4"



Object ID: T0824

Object: Bowl

Artist:

Material: Maple wood, stain

Dimensions: Ht: 7.500

Dia: 16.000



Object ID: T0826

Object: Sash

Artist:

Material: wool, beads, thread

Dimensions:

W: 3.250

L: 43.500



Total Number of Objects in Section: 23

Total Number of Objects: 111