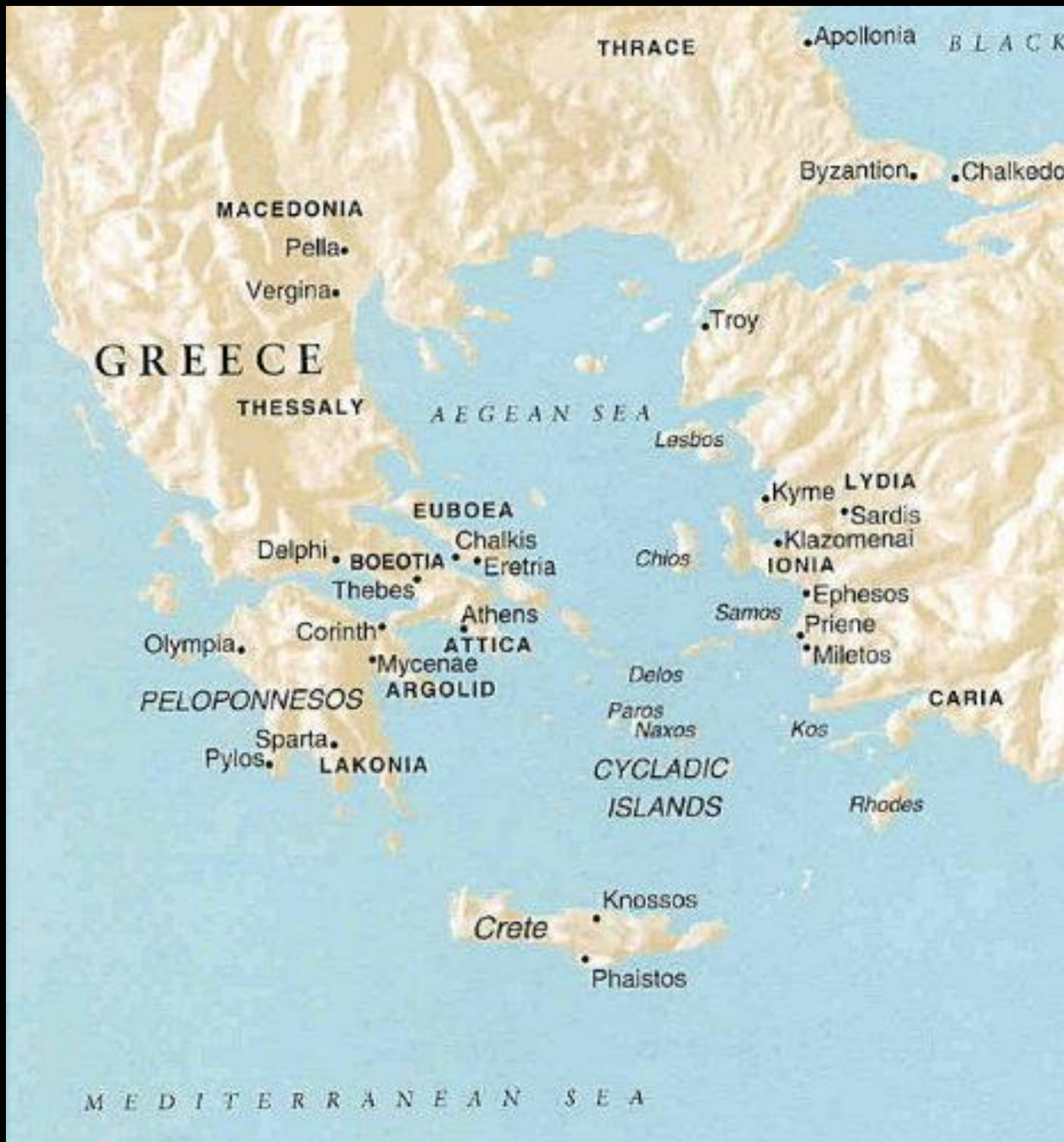


Ancient Greece:  
Classical and Hellenistic Art  
480 – 30 BCE

# Classical and Hellenistic Greek Art

- SEARCH FOR BEAUTY: IMPORTANCE OF BALANCE, HARMONY, AND FORMAL PERFECTION (MODERATION)
- DEVELOPMENT OF THE DEPICTION OF THE HUMAN FIGURE BASED ON NATURAL OBSERVATION
- RELATIONSHIP OF GODS TO HUMANS (GODS IN IMAGE OF HUMANS!)
- INFLUENCE OF FORMATION OF DEMOCRACY/CITY-STATE
- RECOGNITION OF ARTISTS AND ARCHITECTS AS INDIVIDUALS
- RELATIONSHIP OF ARCHITECTURAL PRINCIPLES TO SCULPTURE: INTEGRATED PROGRAMS
- DISSEMINATION OF GREEK CULTURE AND BELIEFS

Classical Greece:  
The Potential of the Individual  
5<sup>th</sup>-4<sup>th</sup> c. BCE



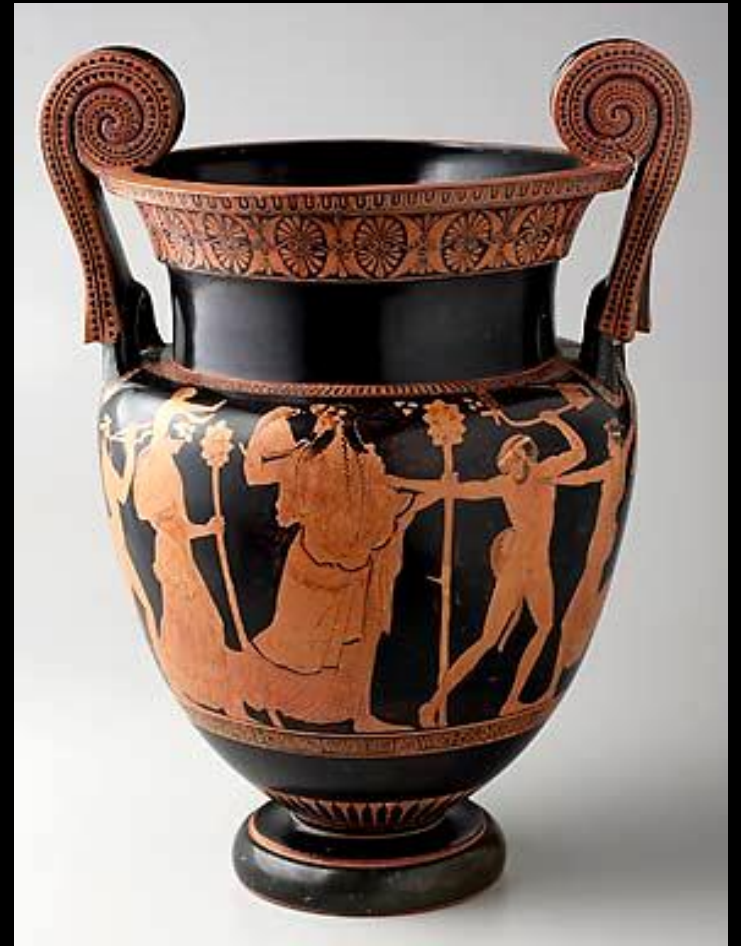
# World Events c. 600-400 BCE

- Introduction of iron smelting in China
- Life of Laozi (China) 6<sup>th</sup> c. BCE – Zhou dynasty
- Life of Confucius (China) 551-479 BCE
- Life of Siddhartha Gautama (India) 563-483 BCE
- Last writings of Hebrew Bible composed

Greece, Methyse Painter, *Volute Krater*, 460-450 BCE,  
slip-glazed earthenware: **returned to Italy**

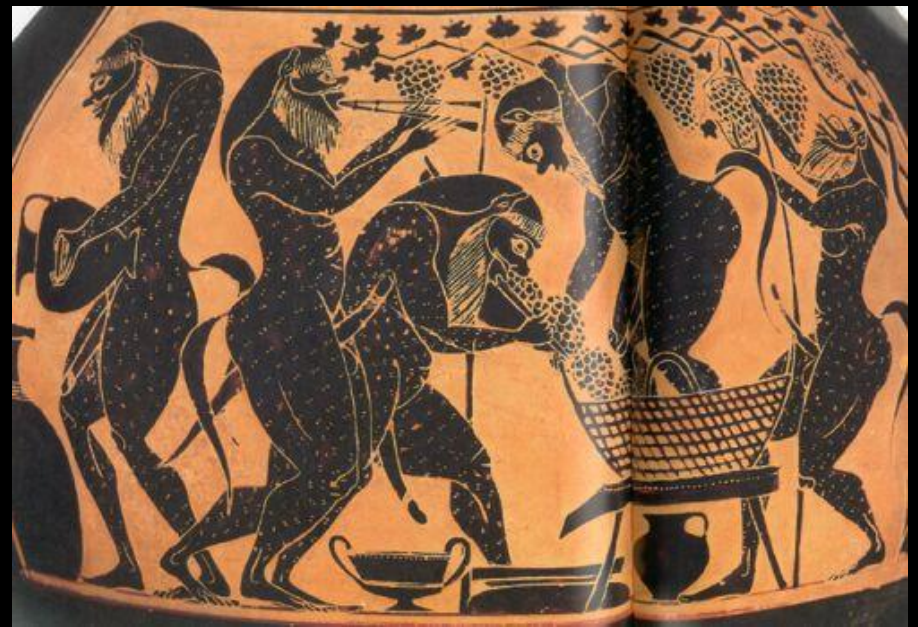








Maenads



Satyrs making wine



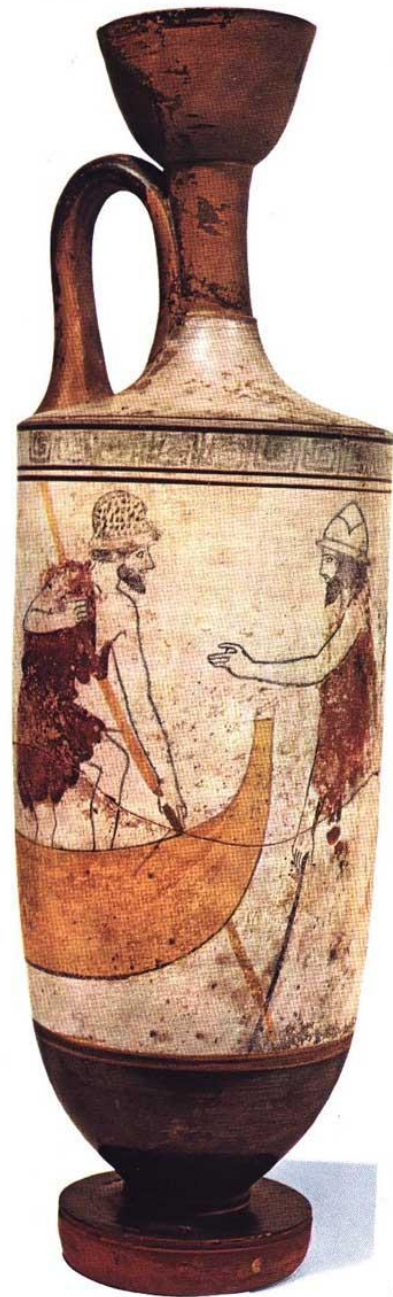
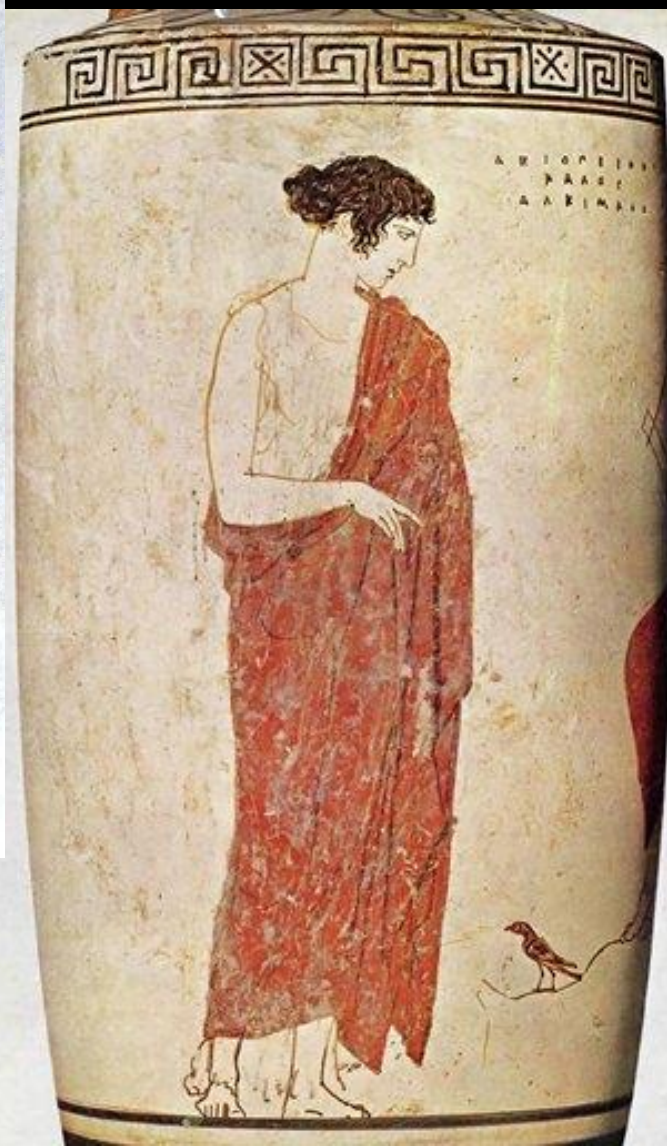
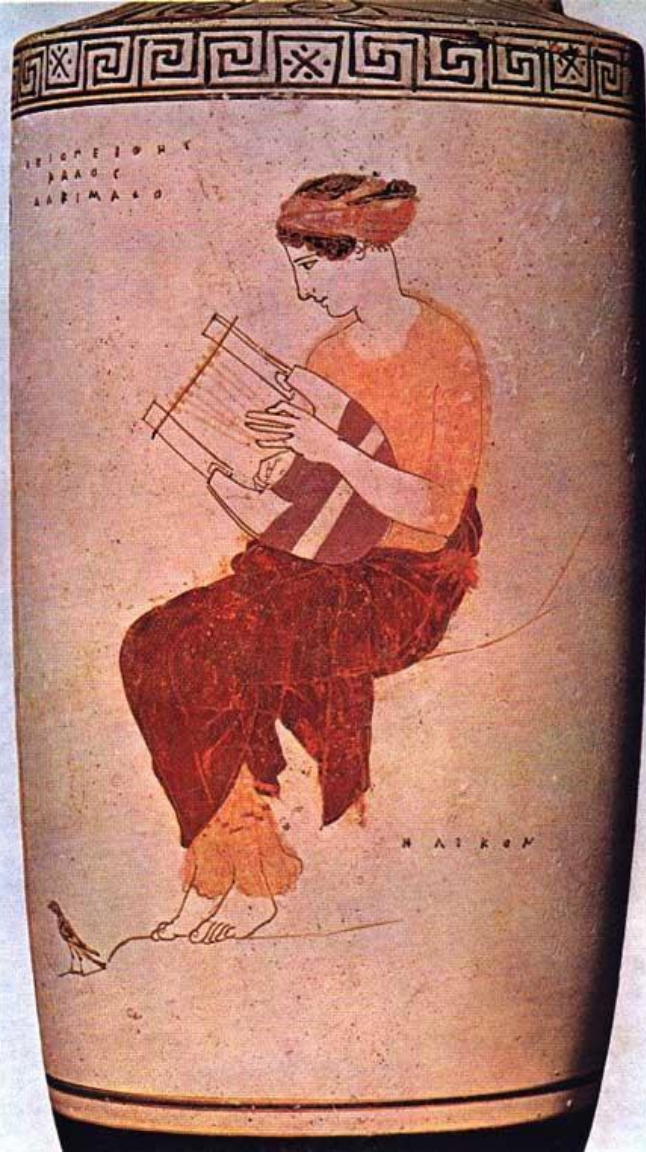
Greece, Methyse Painter, *Volute Krater*, 460-450 BCE





Greece, *Lekythos*, c. 450-430 BCE, white ground slip-glazed earthenware, 26.7







Greece, *Lekythos*, 5<sup>th</sup> century BCE, white ground slip-glazed earthenware, 57.41.2

*Ganymede and the Eagle*, 19<sup>th</sup> century  
(with lekythos)



# Sculpture: Exploration of the Human Form



Greece, *Kouros*, 590-580 BCE,  
marble (Archaic)



Egypt, *Menkaure and his Wife, Queen Khamerernebt* from Giza,  
Dynasty 4, c. 2515 BCE





Greece, *Peplos Kore*,  
c. 530 BCE, marble



Cyprus, *Head of a Votary*,  
500 BCE, limestone, 28.22



Cyprus, *Votive figure*,  
470 BCE, limestone



Greece, *Kritios Boy*, c. 480 BCE, marble





*Zeus/Poseidon* (?), 450 BCE, bronze



Myron, *Discus Thrower*, marble,  
Roman copy after original  
bronze of c. 450 BCE





*Torso*, 2<sup>nd</sup> c. BCE Roman copy of 5<sup>th</sup> c. BCE  
Greek original, marble, 57.40



Minneapolis



Vatican Museum



Naples



WOW!  
IS  
THAT  
HEPTUP?

HE  
LOOKS  
AMAZING.

HOW WAS  
GREECE  
HEPTUP?  
YOU  
LOOK  
REALLY  
RELAXED.

YEAH. I GOT INTO  
CONTRAPPOSTO  
OVER THERE.  
IT'S WHERE YOU  
PUT ALL YOUR  
WEIGHT ON ONE  
LEG. I FEEL  
REALLY  
DYNAMIC.

I LOVE HOW  
HIS HIPS AND  
SHOULDERS  
AREN'T  
PARALLEL.  
HE JUST  
LOOKS SO...  
ALIVE.

AND SO  
GRACEFUL.

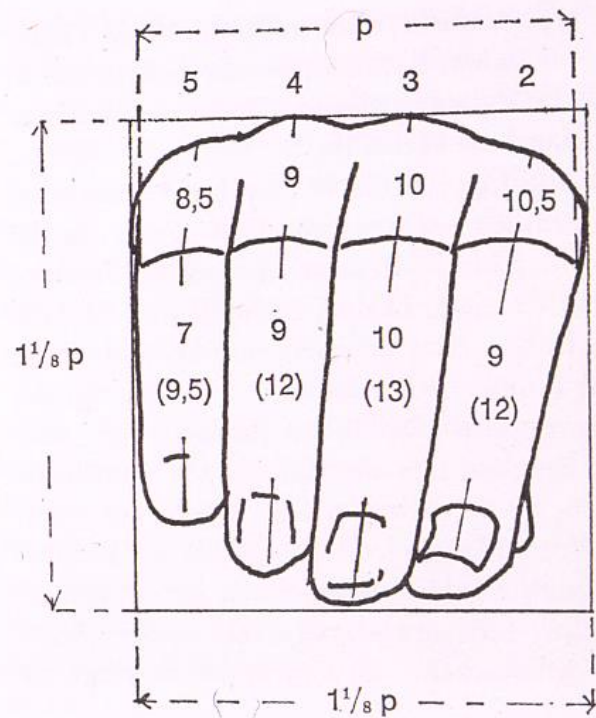
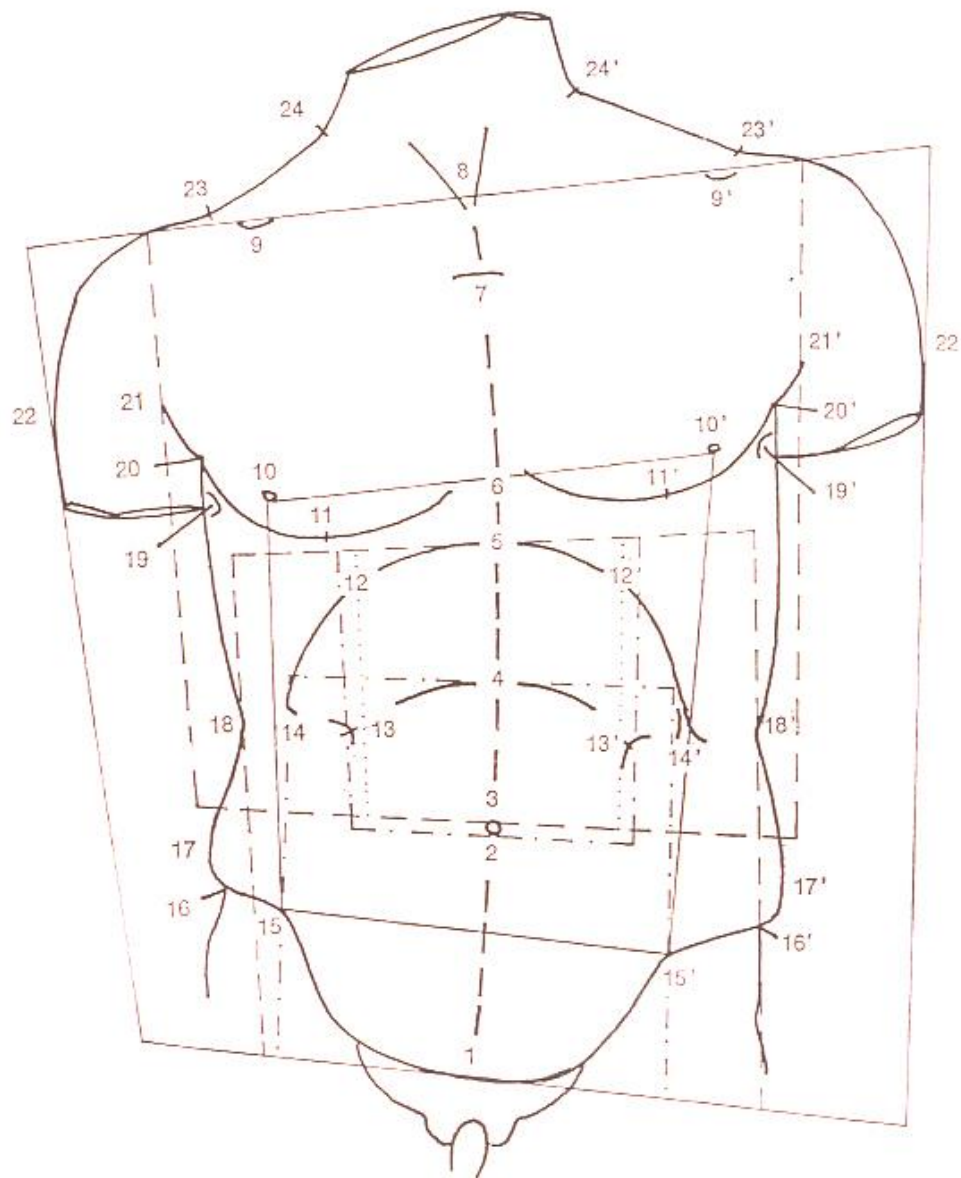












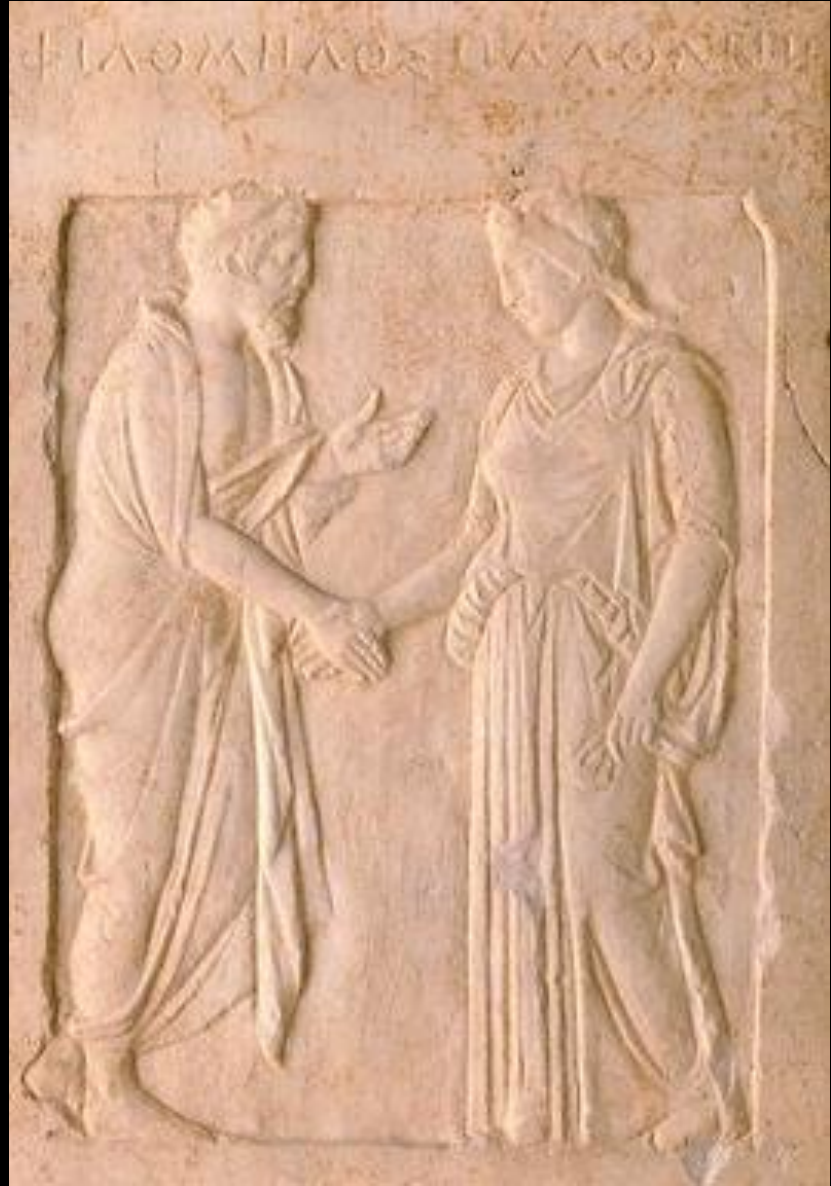
*Doryphoros* (Spear Bearer), 1<sup>st</sup> c. BCE Roman copy of 5<sup>th</sup> c. BCE Greek original, marble, 86.8







Greece, Athens, *Grave Stele*, 5<sup>th</sup> c. BCE,  
pentelic marble, 31.4



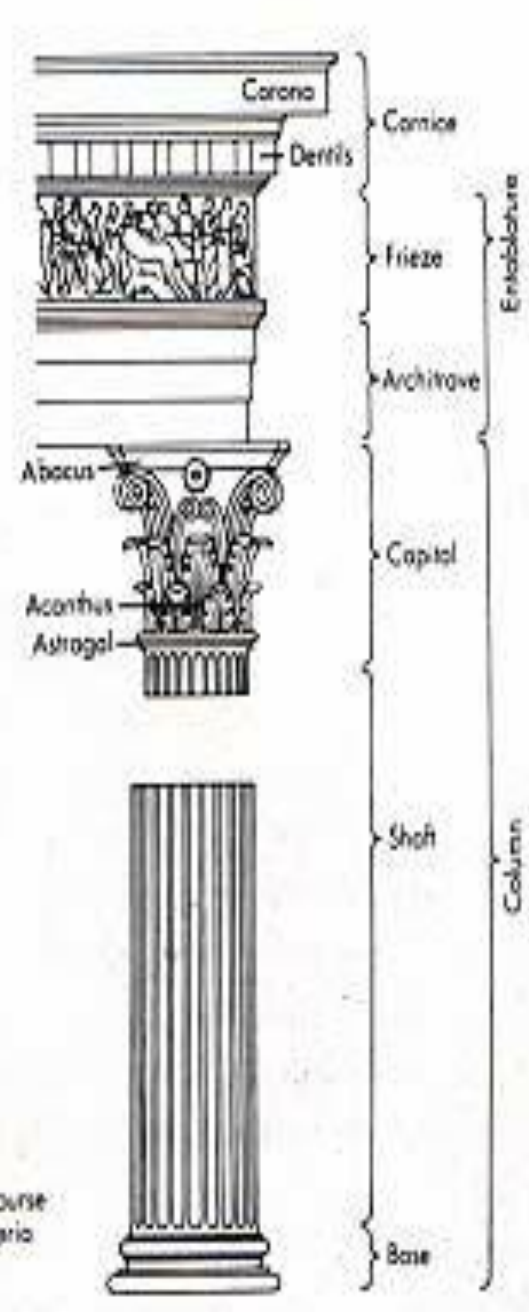
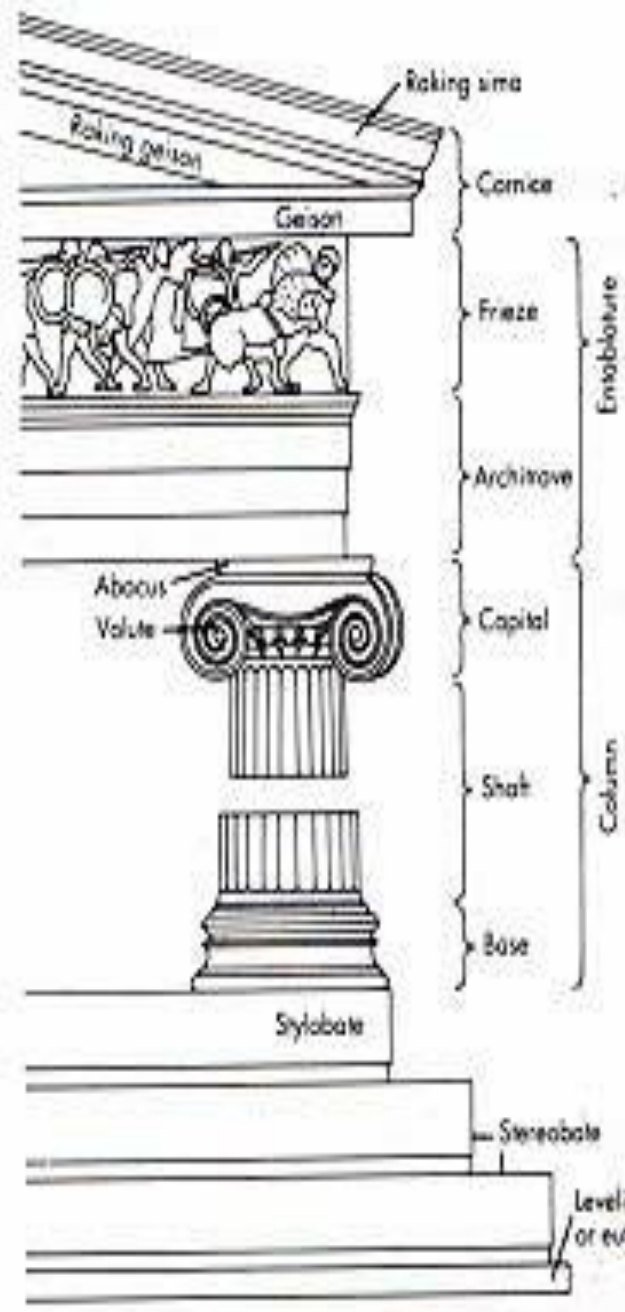
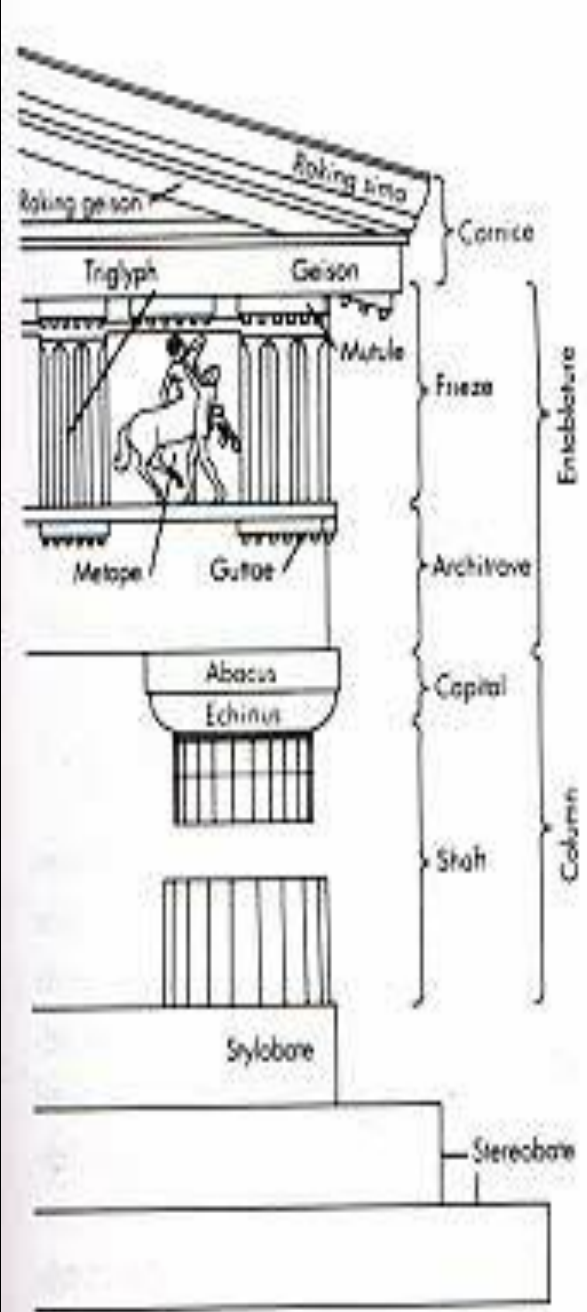


Greece, Paros, *Little Girl with a Bird*,  
c. 450-440 BCE, marble

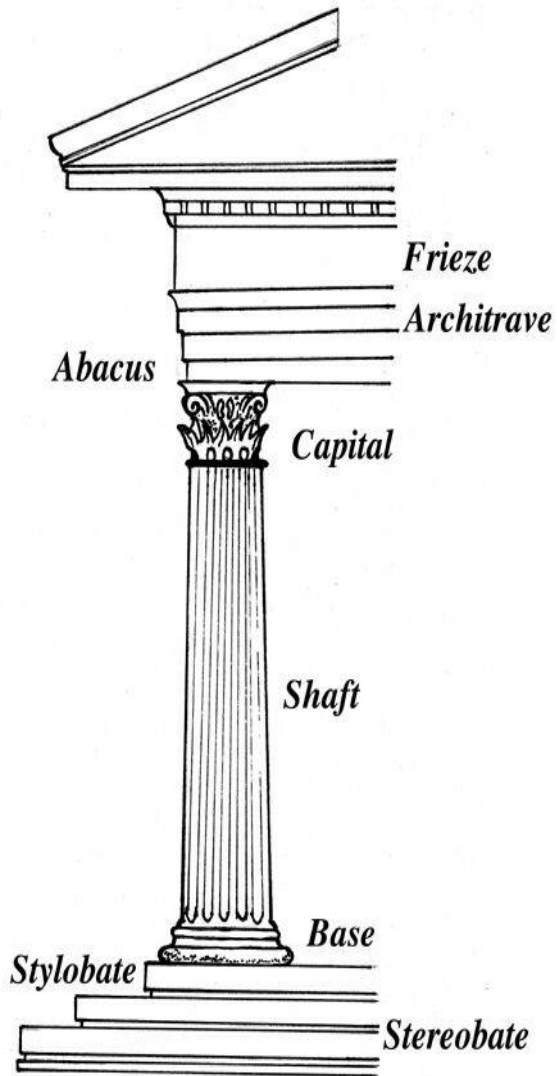




Architecture:  
Doric, Ionic, and Corinthian Orders



# Corinthian Order





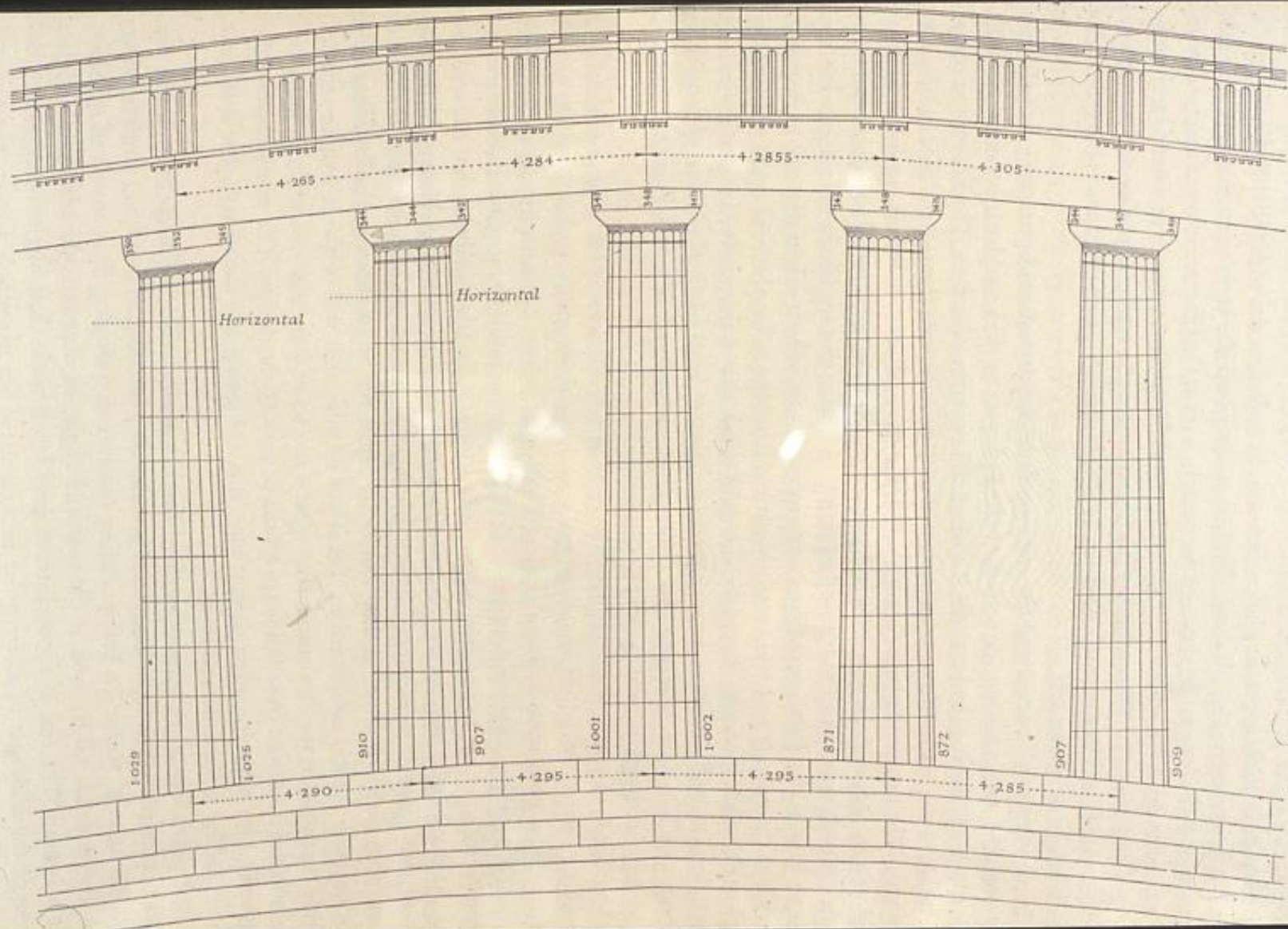
Greece, Athens, *Acropolis*, c.400 BCE



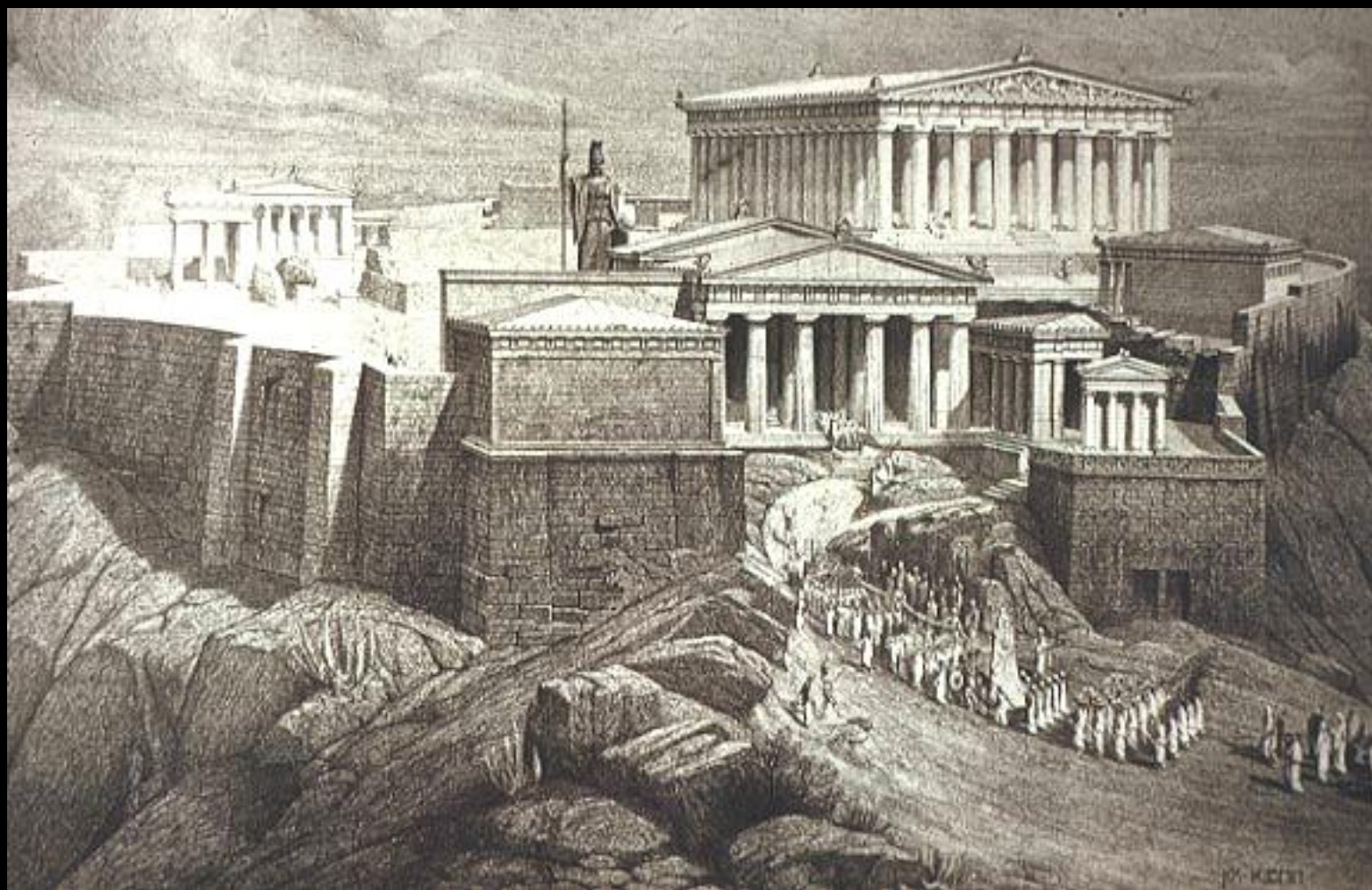


Greece, Athens, *Parthenon*, 447-438 BCE

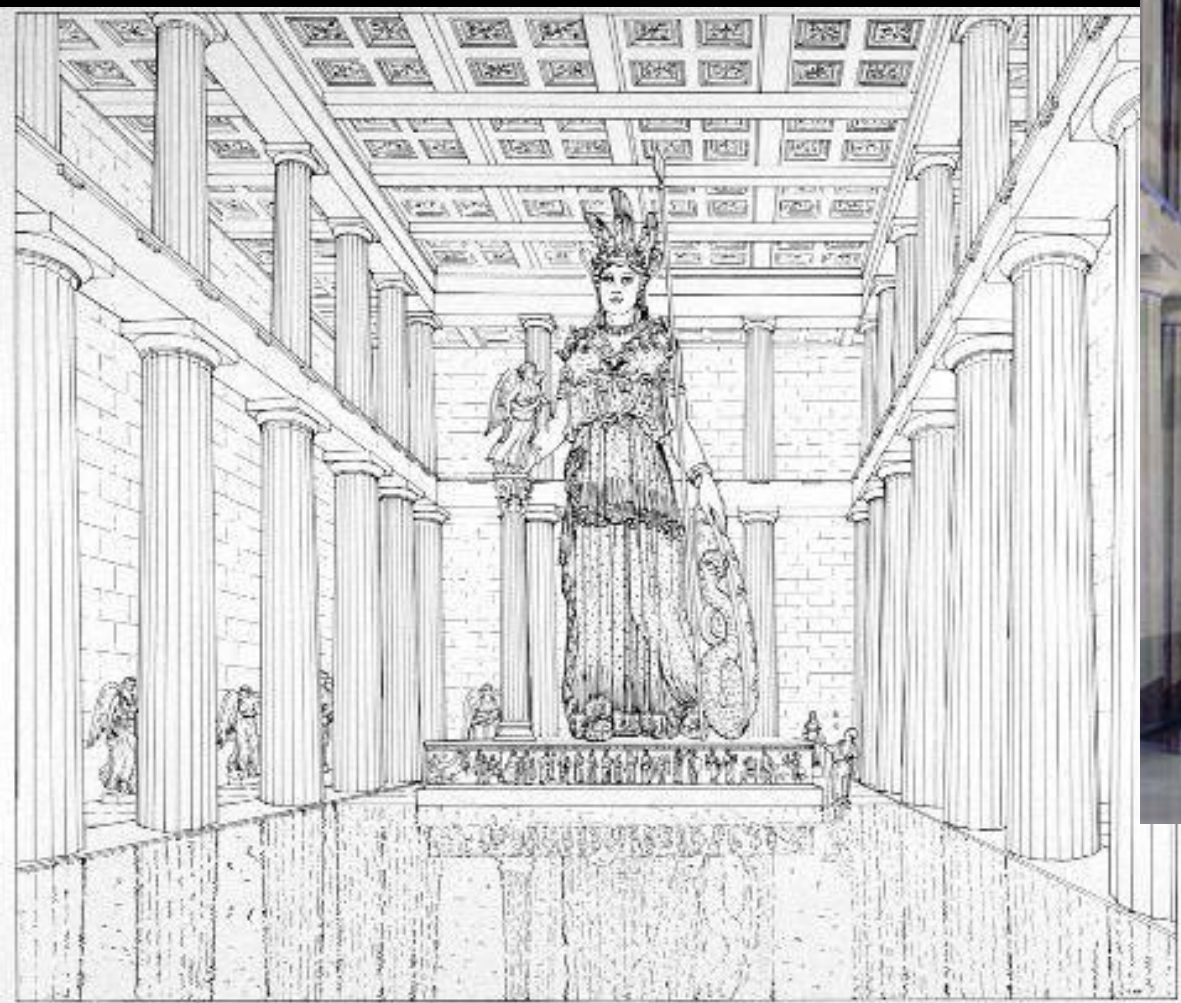








Phidias, *Cult Statue of Athena Parthenos*, reconstruction, 1982-1990 (original 437 BCE), from model of Parthenon, Nashville, Tennessee





Greece, *Three Seated Goddesses*, from east pediment of the Parthenon, Acropolis, c. 435 BCE, marble



Greece, *Nike (Victory) Adjusting her Sandal*, from Temple of Athena Nike, Acropolis, 410-407 BCE, marble







Plaster casts of Parthenon  
sculptural frieze:  
Panathenaiac procession



Greece, Acropolis, *Parthenon Metope*, c. 445 BCE, marble





Praxiteles, *Hermes and the Infant Dionysus*, 300-250 BCE, marble



Praxiteles, *Aphrodite of Knidos*, c. 350 BCE, marble

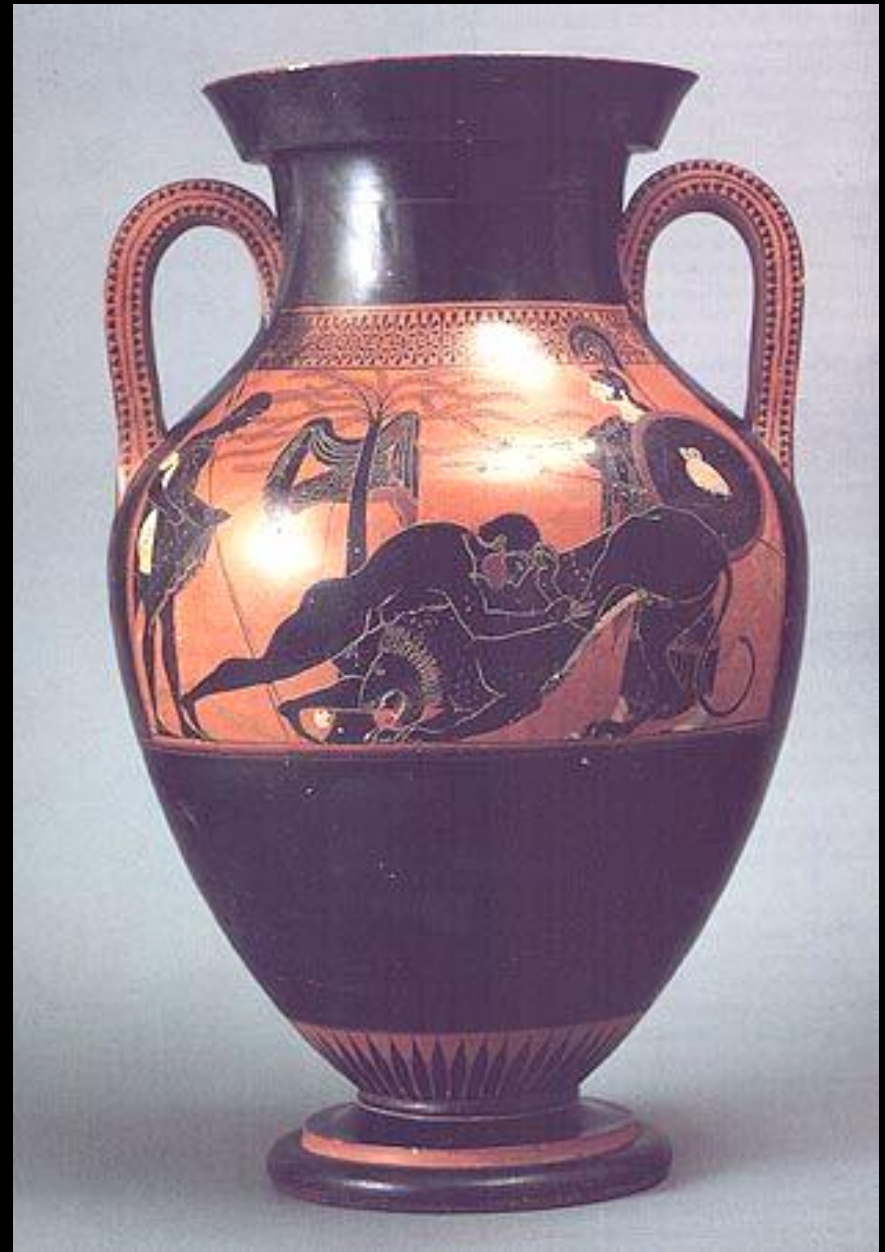
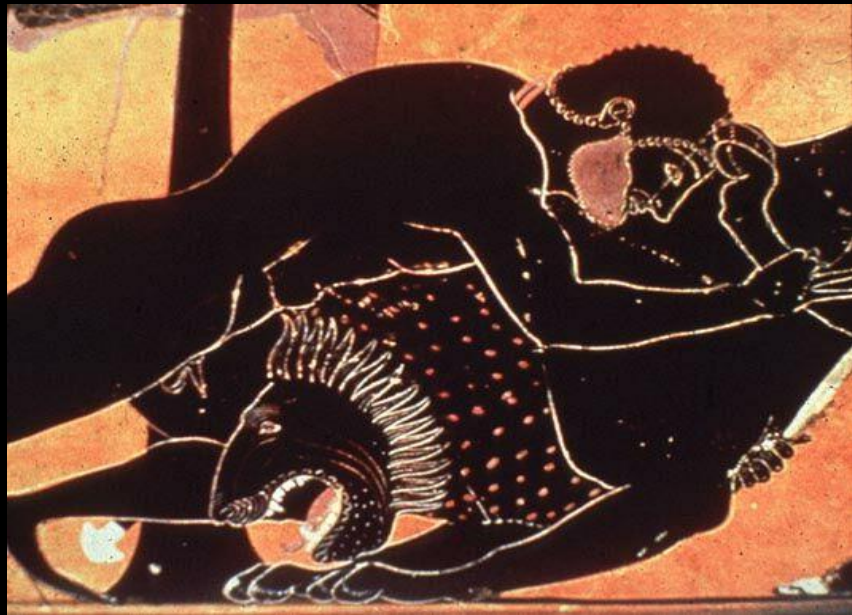




Greece, *Crouching Lion*, c. 330-317 BCE, Pentelic marble, 25.25











Hellenism: Dissemination of  
Greek Culture and Beliefs  
323-31 BCE

# World Events c. 400 BCE-30 BCE

- Mound-building cultures of North America
- Great Wall of China and Qin dynasty terracotta warriors
- Han Dynasty
- First images of the Buddha
- Buddhism introduced in China
- Eventual absorption of Greece into Roman Empire



West Virginia, *Criel Mound*, c.250-150 BCE (Adena Culture)

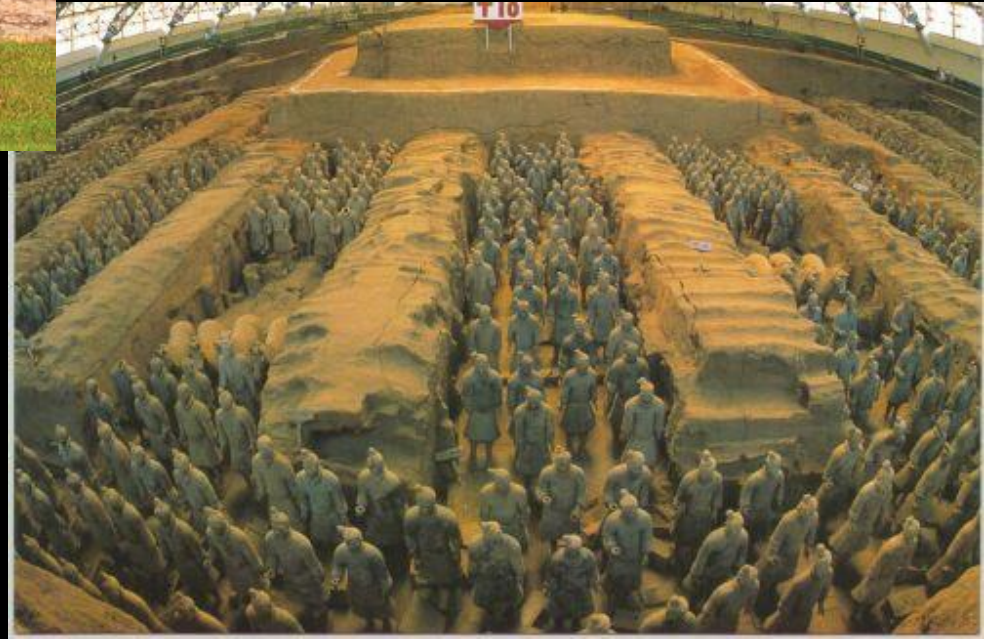


China, *Great Wall*, Emperor Qin Shi Huangdi,  
Qin Dynasty, c. 221-206 BCE





China, Xian, Forbidden Gardens, *Terracotta Army*,  
Qin Shi Huangdi, 3<sup>rd</sup> c. BCE









Italy (Apulia) White Sakkos Painter,  
*Red-figure Hydria*, c. 320 BCE,  
earthenware with colored slips, 2000.71





Greece, *Head of Aphrodite*,  
3<sup>rd</sup> c. BCE, marble, 32.15



Greece, *Head of Aphrodite*,  
3<sup>rd</sup> c. BCE, marble, 32.15



Afghanistan (Gandhara),  
*Standing Buddha*, 3<sup>rd</sup> c. CE







Greece, *Nike of Samothrace*,  
Sanctuary of the Gods, c. 190 BCE,  
marble, Louvre Museum





Greece, *Aphrodite of Melos* (*Venus de Milo*), c. 150-100 BCE, marble



Greece, *Market Woman*,  
2<sup>nd</sup> c. BCE, marble



Greece, *Tiber Muse*, 2<sup>nd</sup>-1<sup>st</sup> c. BCE,  
marble, 56.12

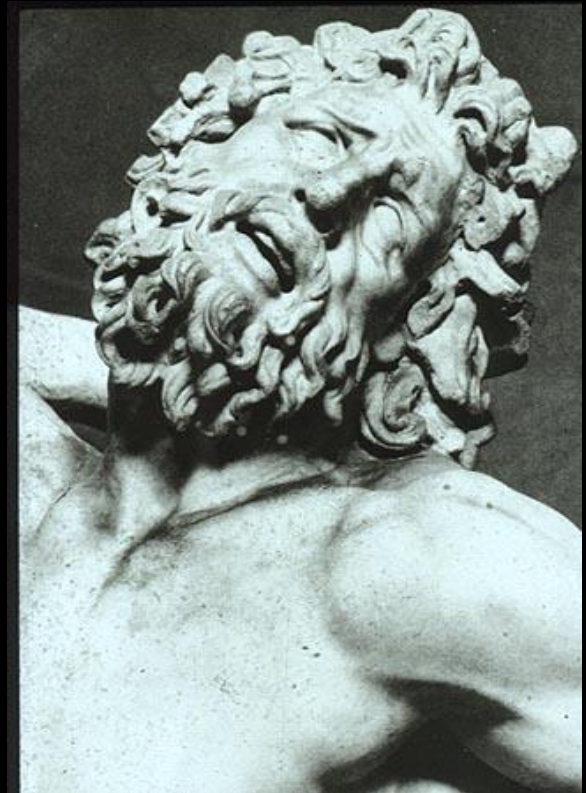




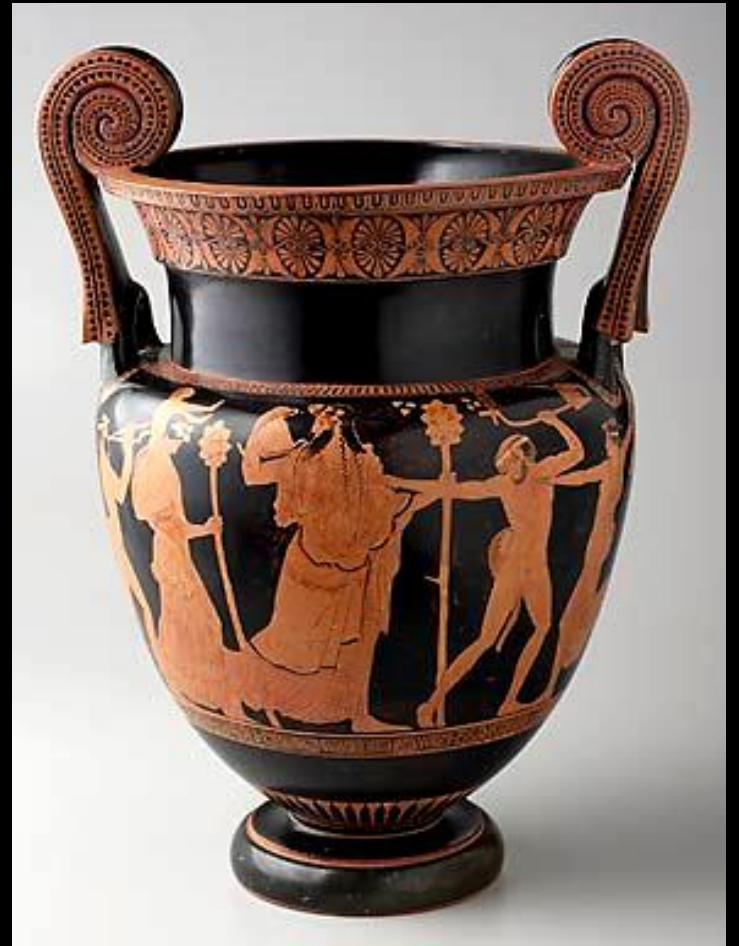
Greece, *Tiber Muse*, 2<sup>nd</sup>-1<sup>st</sup> c. BCE,  
marble, 56.12



Greece, *Laocoön and his Two Sons*, c. 2<sup>nd</sup>-1<sup>st</sup> c. BCE, marble









Greece, *Ladle*, 300-250 BCE,  
silver, 72.104

Greece, *Foliate Sieve*, late 4<sup>th</sup> or early  
3<sup>rd</sup> c. BCE, silver, 72.103



Greece, *Kantharos*, 3<sup>rd</sup> c. CE,  
bronze, 99.92





Greece, Villa Giulia Painter, *Red Figure Kylix*, 5<sup>th</sup> c. BCE, slip-glazed earthenware, 62.41

