

Minneapolis Institute of Art

International Modernism:
Life in a Fast-Changing World
Phase 3: January 30, 2016

Mia

Phase 3

January 30, 2016

Mia

G275:
The Circus and
Other Entertainments

Mia



58.33 PTGS Juan Gris, Seated Harlequin, c. 1920
Oil on canvas 36 x 29 1/2 in. (91.44 x 74.93 cm) (canvas);
1 9/16 x 34 5/16 x 3 in. (105.57 x 87.15 x 7.62 cm) (outer frame)



61.6 PTGS Walt Kuhn, Sandy, 1946
Oil on canvas 30 x 25 in. (76.2 x 63.5 cm)



77.68.3 P&NM August Sander, Gunther Sander Circus Artists, Cologne, 1926
Gelatin silver print 8 9/16 x 11 11/16 in. (21.75 x 29.69 cm) (image); 9 3/8 x 12
in. (23.81 x 30.48 cm) (sheet)



2014.124.1 P&D Max Beckmann, Der Ausrufer, from "Jahrmarkt", 1921 (published 1922)
Drypoint 21 3/4 x 15 1/8 in. (55.25 x 38.42 cm)



L2014.234.2 PTGS Milton Avery, Acrobats, 1931
Gouache on paper 12 x 18 in.



P.13,788 P&D Jacques Villon, *Le Petit Equilibriste*, 1914
Drypoint 8 1/2 x 6 1/2 in. (21.59 x 16.51 cm) (plate); 12 3/4 x 9 3/4 in. (32.39 x 24.77 cm) (sheet)



52.21 DATS Jacques Lipchitz, Toreador, 1914-1915
Bronze 31 3/4 x 9 3/4 x 10 in. (80.6 x 24.8 x 25.4 cm)



86.18.2 P&NM Robert Frank, Valencia (Bullfight), 1950
Gelatin silver print 13 13/16 x 9 1/4 in. (35.08 x 23.5 cm)
(image); 13 13/16 x 9 1/4 in. (35.12 x 23.5 cm) (mount)



2002.113 P&D Pablo Picasso, *Après la Pique* (After the Lance), 1959
Color linocut 21 x 25-1/4 in. (53.3 x 64.1 cm)



74.36.10 P&NM James VanDerZee, Portrait of an Actor, Harlem, 1929 (printed 1974)
Gelatin silver print (printed 1974) 6 1/2 x 4 5/8 in. (16.51 x 11.75 cm) (image)
14 15/16 x 12 1/2 in. (37.94 x 31.75 cm) (mount)



82.28.20 P&NM Edward Steichen, The Isadora Duncan Dancers of Moscow
Gelatin silver print (printed 1929) 9 1/2 x 7 5/8 in. (24.13 x 19.37 cm) (image);
10 x 8 in. (25.4 x 20.32 cm) (sheet)



98.276.76 DATS Raoul-Francois Larche, c. 1900
Gilt bronze 13 x 7in. (33 x 17.8cm)

Loie Fuller's "Serpentine Dance" being performed
by another dancer, c. 1898

<https://www.youtube.com/watch?v=iCJ7gIJLRyE>

G276:

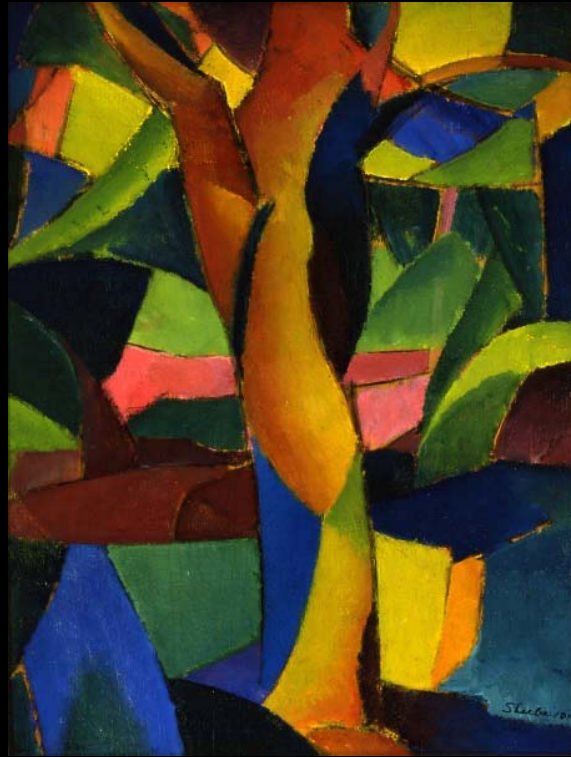
Break it Down:

Abstraction

Mia



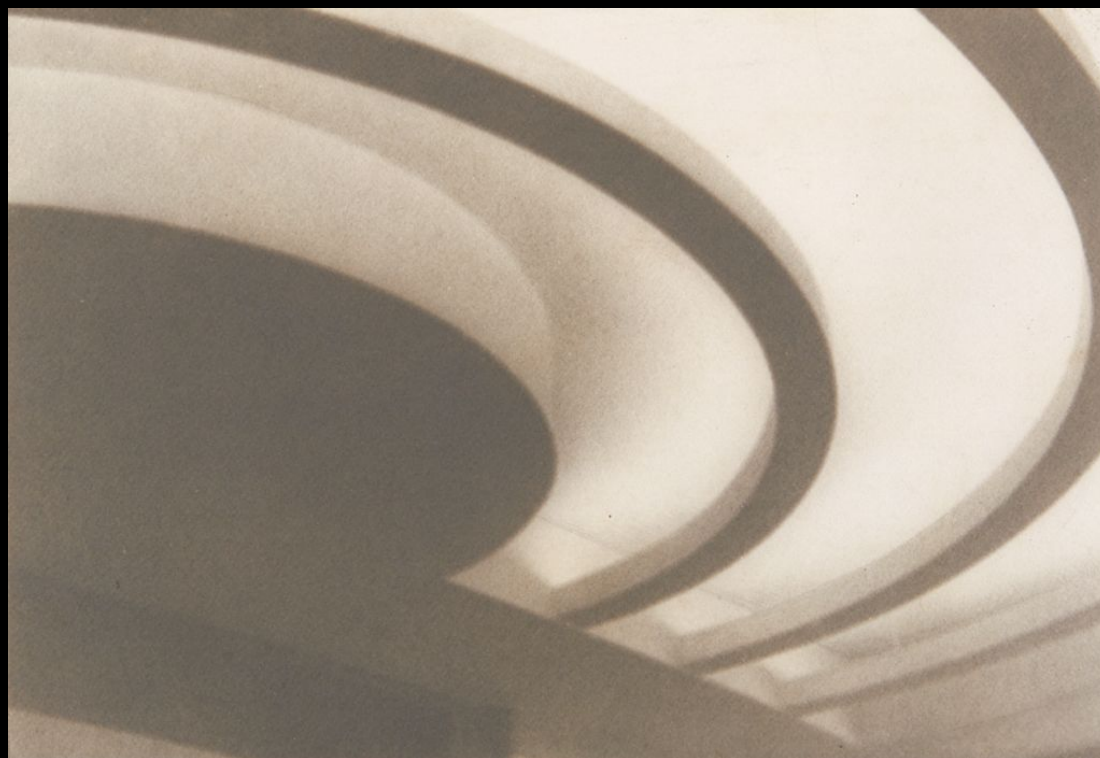
L2014.234.106 PTGS Marsden Hartley, Abstraction, c. 1915
Oil on canvas 23 5/8 x 19 3/4 in. (60.01 x 50.17 cm) (image)
30 1/2 x 26 1/2 in. (77.47 x 67.31 cm) (outer frame)



L2014.234.117 PTGS Charles Sheeler, Abstraction, Tree Form, 1914
Oil on board 13 3/4 x 10 1/2 in. (34.93 x 26.67 cm)



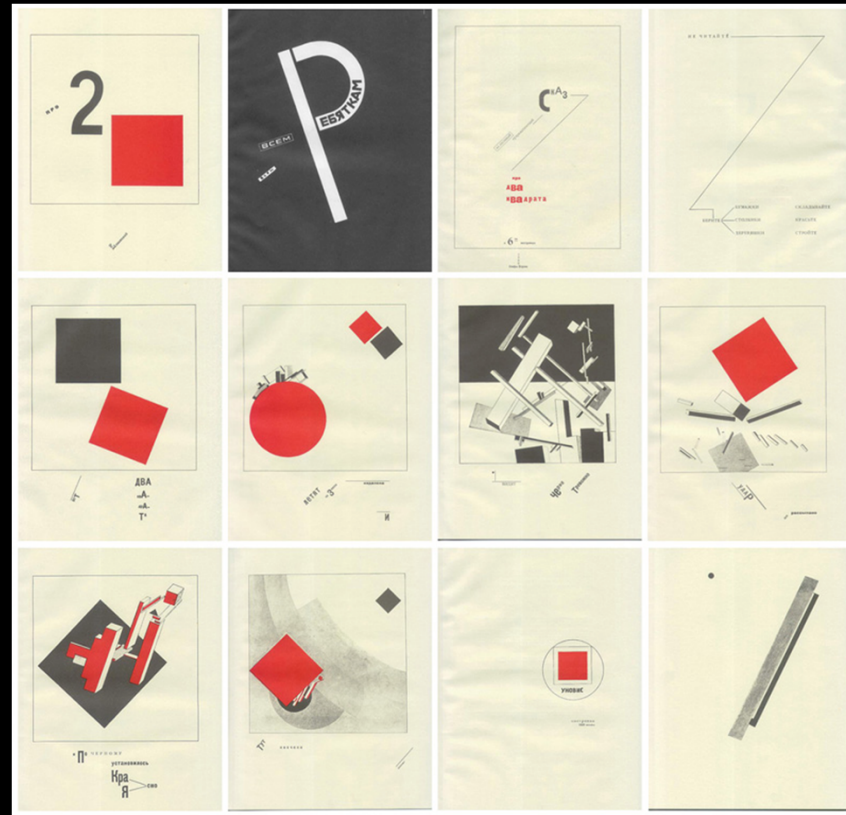
Theo Van Doesburg, *Nature Morte*, 1916
Oil on canvas in original artist's frame
32 1/4 x 26 1/2
32 3/8 x 26 3/4 inches (framed)



81.12.3 P&NM Clarence K. Bros, *Light Pattern*, c. 1935
Gelatin silver print 9 1/2 x 6 1/2 in. (24.13 x 16.51 cm) (image); 20 x 15 15/16 in. (50.8 x 40.48 cm) (mount)



94.15 P&NM Jaromír Funke, *Composition*, c. 1927
gelatin silver print 11 3/4 x 9 5/16 in. (29.85 x 23.65 cm) (image); 19 5/16 x 15 1/2 in. (49.05
x 39.37 cm) (mount)



B.89.3 P&D El Lissitzky (Lazar Markovich Lissitzky), Verlag Skythen, Berlin, E. Haberland ,
Leipzig; About Two Squares: A Suprematist Tale in Six Constructions, 1922
Lithographs and typography 10 7/8 x 8 5/8 in. (27.62 x 21.91 cm)



88.21 DATS Nikolai Lapschin, Suprematist Plate, 1909 (decorated c. 1923)
Porcelain 1 x 8 9/16 in. (2.5 x 21.75 cm)

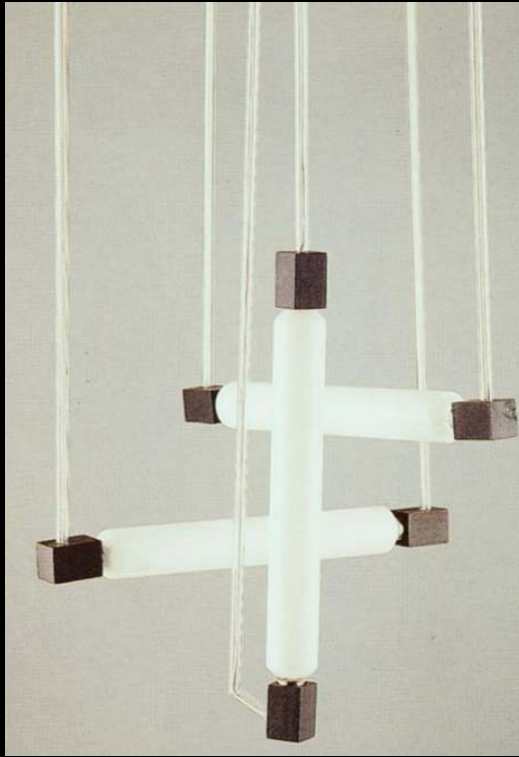


97.20.2 P&D Marcel Duchamp, Published by Marcel Duchamp, Assembled by Jacqueline Monnier ,
Paris;

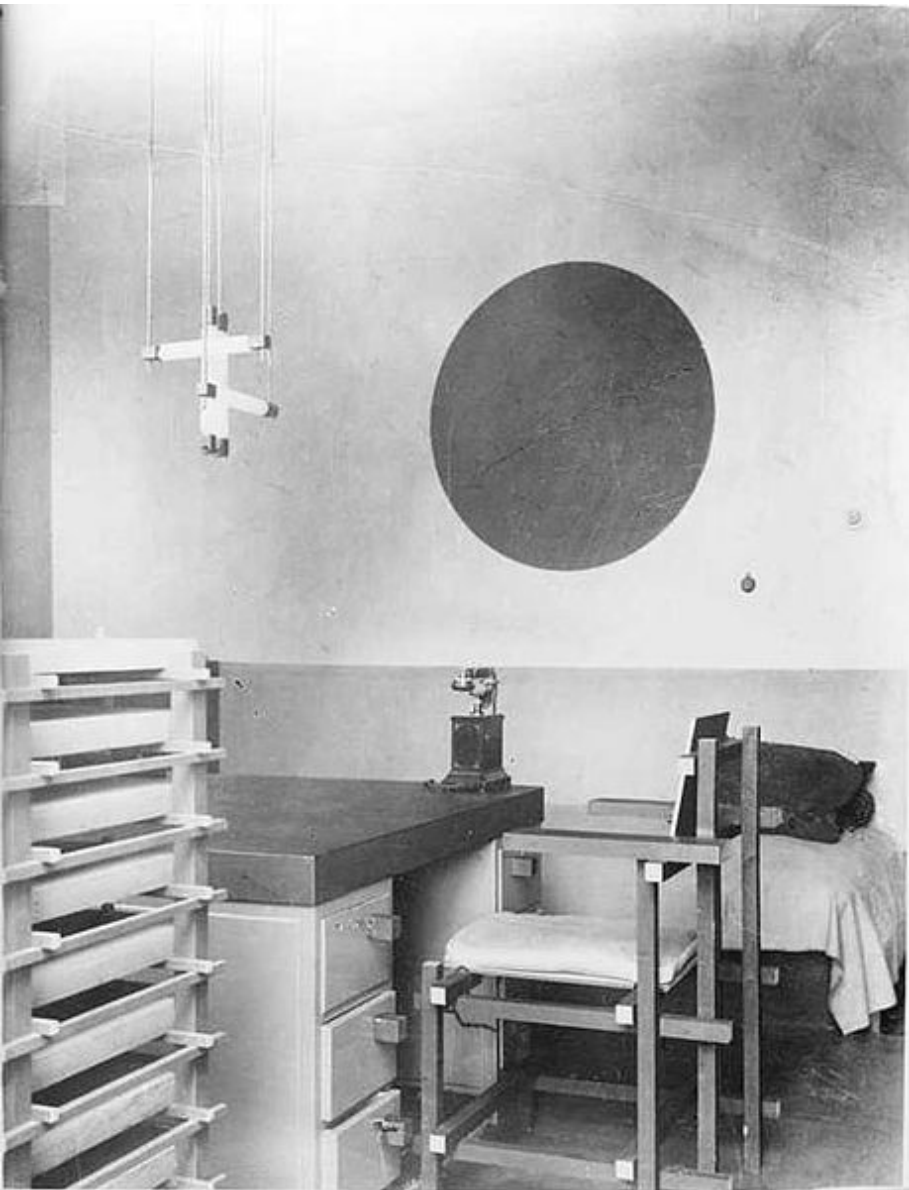
Boîte-en-Valise (Box in a Valise) / De ou par Marcel Duchamp ou Rose Sélavy (From or by Marcel
Duchamp or Rose Sélavy) conceived 1936-1941; assembled 1961 Linen-covered box containing
mixed media assemblage/collage of miniature replicas, photographs, and color reproductions of works
by Duchamp 16 x 14 3/4 x 3 3/16 in. (40.64 x 37.47 x 8.1 cm)



98.276.71 DATS Gerrit Rietveld, Gerard A. van de Groenekan, "Hogestoel" highback chair,
1955 (designed 1919)
Painted beechwood 36 x 25 1/2 x 24in. (91.4 x 64.8 x 61cm)



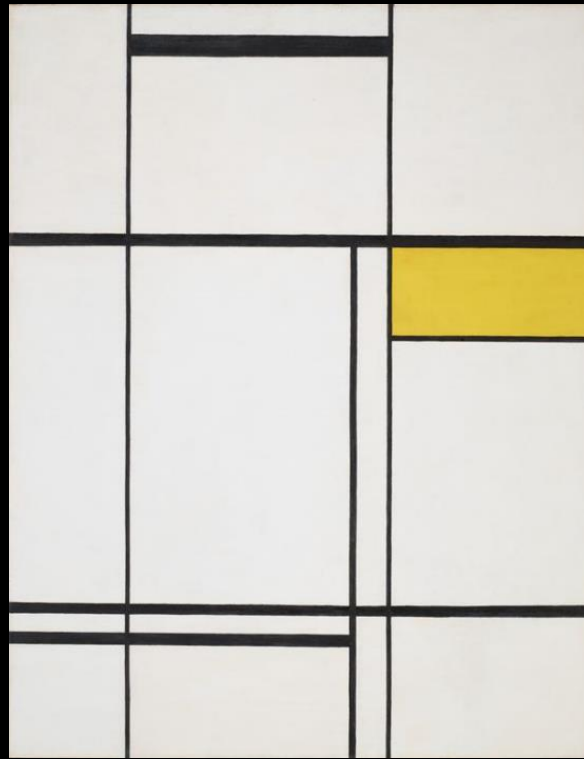
98.276.67 DATS Gerrit Rietveld, Gerard A. van de Groenekan, 1976 (designed 1920)
Incandescent glass bulbs, oak, paint 53in. (134.6cm) (hanging size, adjustable)



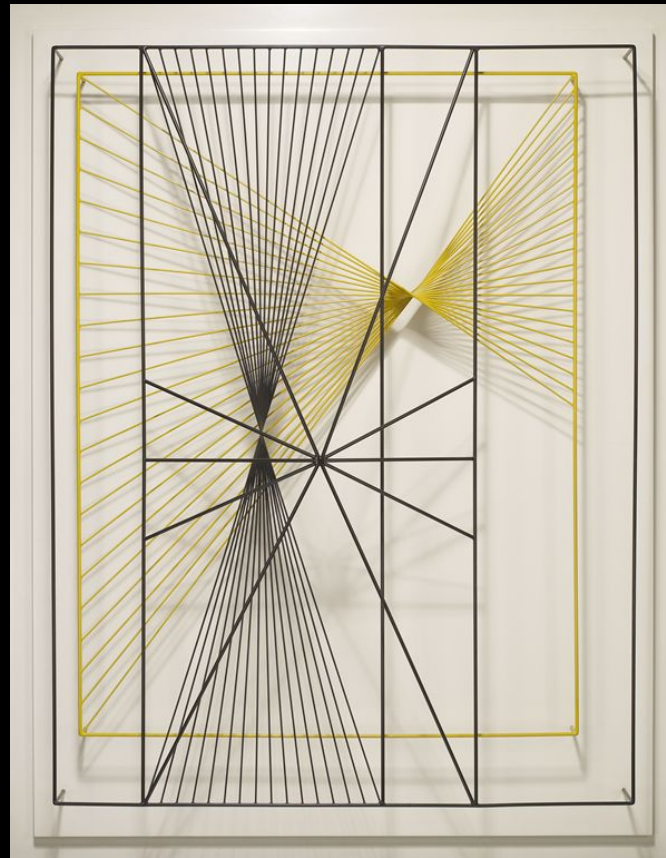
Hartog interior, Maarssen.
From *De Stijl*, vol. 6, nr. 3/4 (May-June 1923).



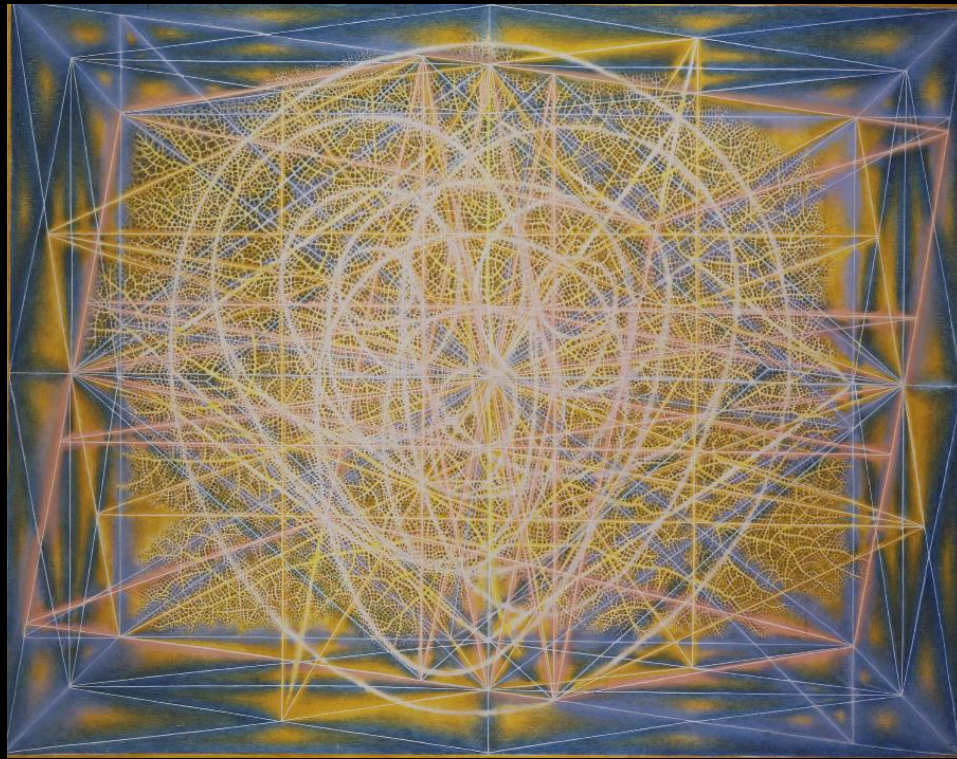
98.276.115 DATS Piet (Pieter) Zwart, 1935
Wood, metal 26 x 12 1/2 x 14in. (66 x 31.8 x 35.6cm)



2015.55.2 PTGS Burgoyne Diller, Second Theme, 1934
Oil on canvas 54 x 42 1/8 in. (137.16 x 107 cm) (image)
56 5/8 x 44 3/4 in. (143.83 x 113.67 cm) (outer frame)



75.61 DATS Charles Biederman, Construction II, 1940
Painted wood and metal rods 62 1/2 x 48 3/4 x 10 3/4 in. (158.8 x 123.8 x 27.3 cm)



L2014.234.256 PTGS Pavel Tchelitchev, Inacheve, c. 1956-1957
Oil on canvas 45 x 57 1/2 in.



L2014.234.435 PTGS Theodore Roszak, Study For Opposition Within A Circle, c. 1947
Oil on canvas 24 x 24 in.



98.276.301 DATS Anzolo Fuga, Luciano Ferro, A.V.E.M. (Arte Vetraria Muranese), c. 1952 Fused and blown glass



2012.112.4 DATS Fulvio Bianconi, Pezzato glass vase, c. 1955 glass

Phase 4

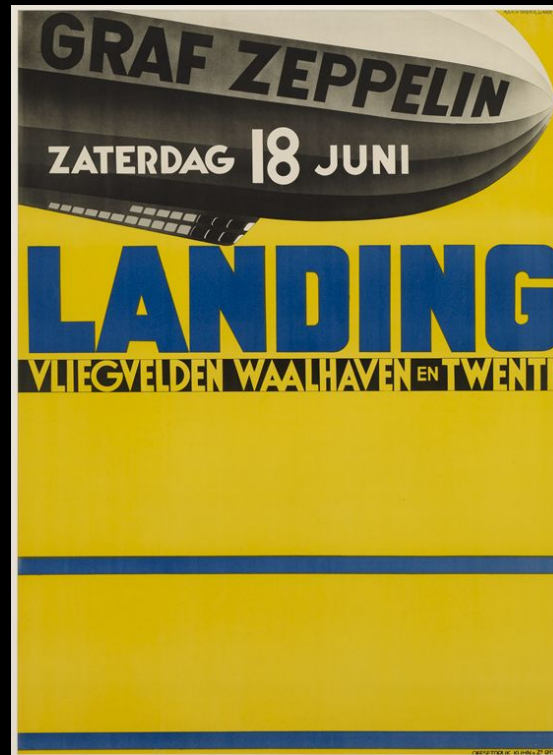
July 30, 2016

G264, 265

(Preview of representative
works)

Mia

Labor Transportation Industry



98.33.27 P&D Kees van der Laan, Graf-Spee Landing, 1932
Color lithograph 44 x 32 in. (111.8 x 81.3 cm) (sheet)
49 3/4 x 38 1/8 in. (126.37 x 96.84 cm) (outer frame)



98.276.119a-t DATS J.A. Henckels Twin Works, Rodak Import & Export Corp.,
"Zeppelin" cocktail shaker (contains 18 serving elements), c. 1930
Nickel-plated brass 12 x 4in. (30.5 x 10.2cm)



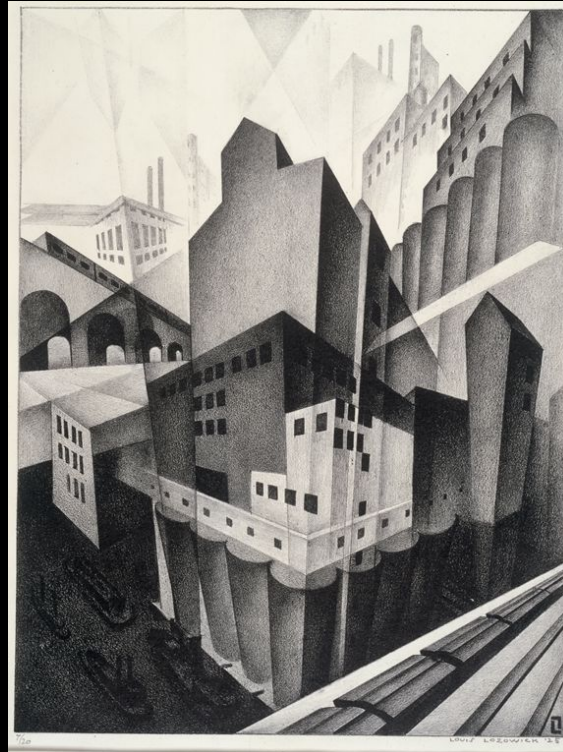
98.276.127 DATS Possibly J.C. Penney Co., Inc., "Graf Zeppelin" toy dirigible, 1930s
Iron alloy, aluminum, enamel paint, decals 7 1/4 x 25in. (18.4 x 63.5cm)



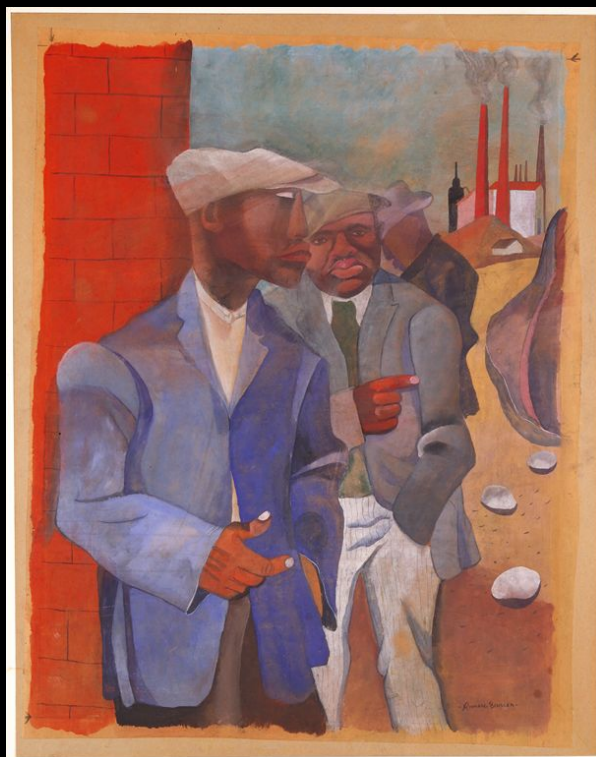
98.276.180 DATS Nikola Tesla, Welch Scientific Company,
"Tesla Coil" high-frequency discharge demonstrator, 1931
Steel, copper, wire, wood 29 x 18 1/2 x 12 1/2in. (73.7 x 47 x 31.8cm)



75.87 P&D Joseph Stella, Pittsburgh Factory Scene, c. 1908-1918
Pastel and charcoal on paper 14 1/4 x 19 3/8 in. (36.2 x 49.2 cm) (sheet)
22 1/2 x 27 1/2 x 1 1/2 in. (57.15 x 69.85 x 3.81 cm) (outer frame)



P.74.5 P&D Louis Lozowick, Printed by George C. Miller, Minneapolis, 1925
Lithograph 11 11/16 x 8 15/16 in. (29.69 x 22.7 cm) (image)

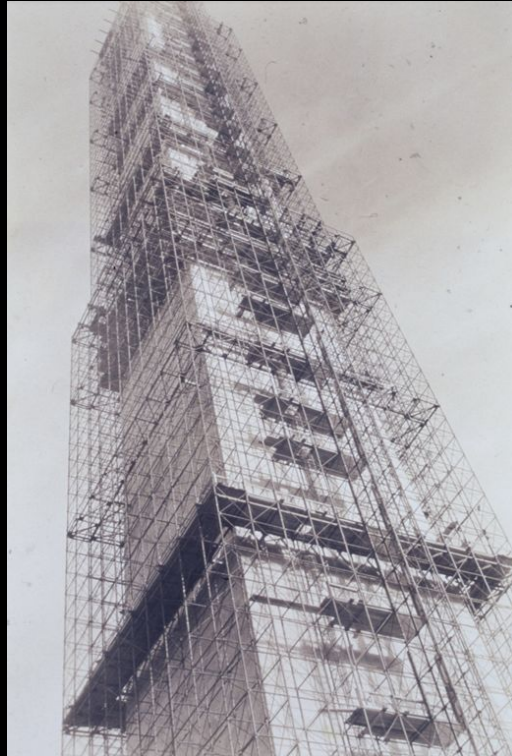


92.24 P&D Romare Howard Bearden, *Factory Workers*, 1942
Gouache and casein on brown kraft paper mounted on board 37 3/8 × 28 3/4 in. (94.93 × 73.03 cm) (image)
45 3/4 × 37 1/8 × 1 1/2 in. (116.21 × 94.3 × 3.81 cm) (outer frame)



2007.86.23 P&NM Marc Riboud, Canteen for a Steel Mill, China, 1957
Gelatin silver print 14 x 20 13/16 in. (35.56 x 52.86 cm) (image)
19 15/16 x 24 in. (50.64 x 60.96 cm) (sheet)

**War
Nationalism
Conflict**



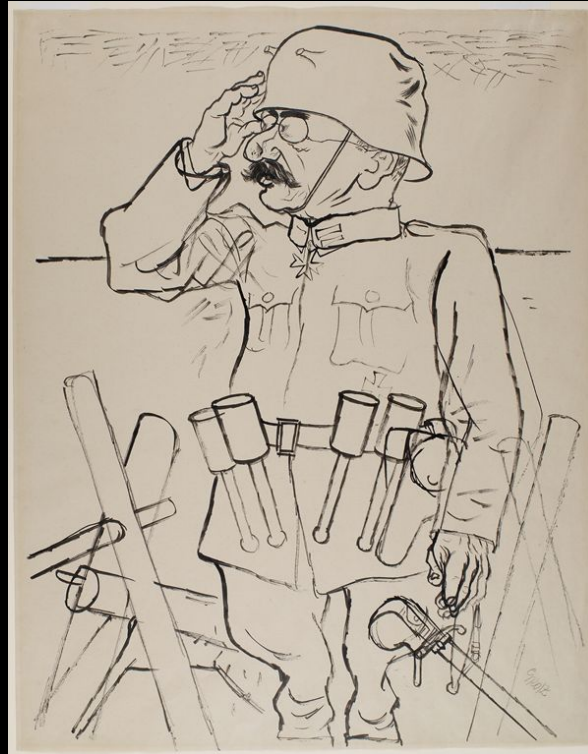
2000.240.2 P&NM Margaret Bourke-White, Washington Monument, Washington, D. C., 1933
Gelatin silver print 6 1/2 x 4 9/16 in. (16.51 x 11.59 cm) (image)
6 15/16 x 5 in. (17.62 x 12.7 cm) (sheet)



93.75.1.2 P&NM David Seymour, The International Center for Photography,
A Spanish Civil War unit named after Ernst Thaelmann, a German communist. It was composed of anti-Nazi
Germans and fought for the Republic of Spain against Franco. 1936
Gelatin silver print (printed 1982) 11 15/16 x 8 in. (30.32 x 20.32 cm) (image)
14 x 11 in. (35.56 x 27.94 cm) (sheet)



P.71.141 P&D Käthe Kollwitz, The Volunteers, 1921-1922 (published 1923)
Woodcut on Japan paper 13 13/16 x 19 7/16 in. (35.08 x 49.37 cm) (image)
18 5/8 x 25 7/8 in. (47.31 x 65.72 cm) (sheet)



2006.62 P&D George Grosz, Ehrenbezeugung (Salute and Honor), 1923
Reed pen and India ink 23 1/2 x 18 7/16 in. (59.69 x 46.83 cm)



2005.16.1.2 P&D Otto Dix, Karl Nierendorf,
Verschüttete (Januar 1916, Champagne) (Buried Alive [January 1916, Champagne]),
plate 2 from Der Krieg (The War), 1924
Etching 5 7/16 x 7 7/8 in. (13.81 x 20 cm) (plate); 13 5/8 x 18 3/4 in. (34.61 x 47.63 cm) (sheet)