

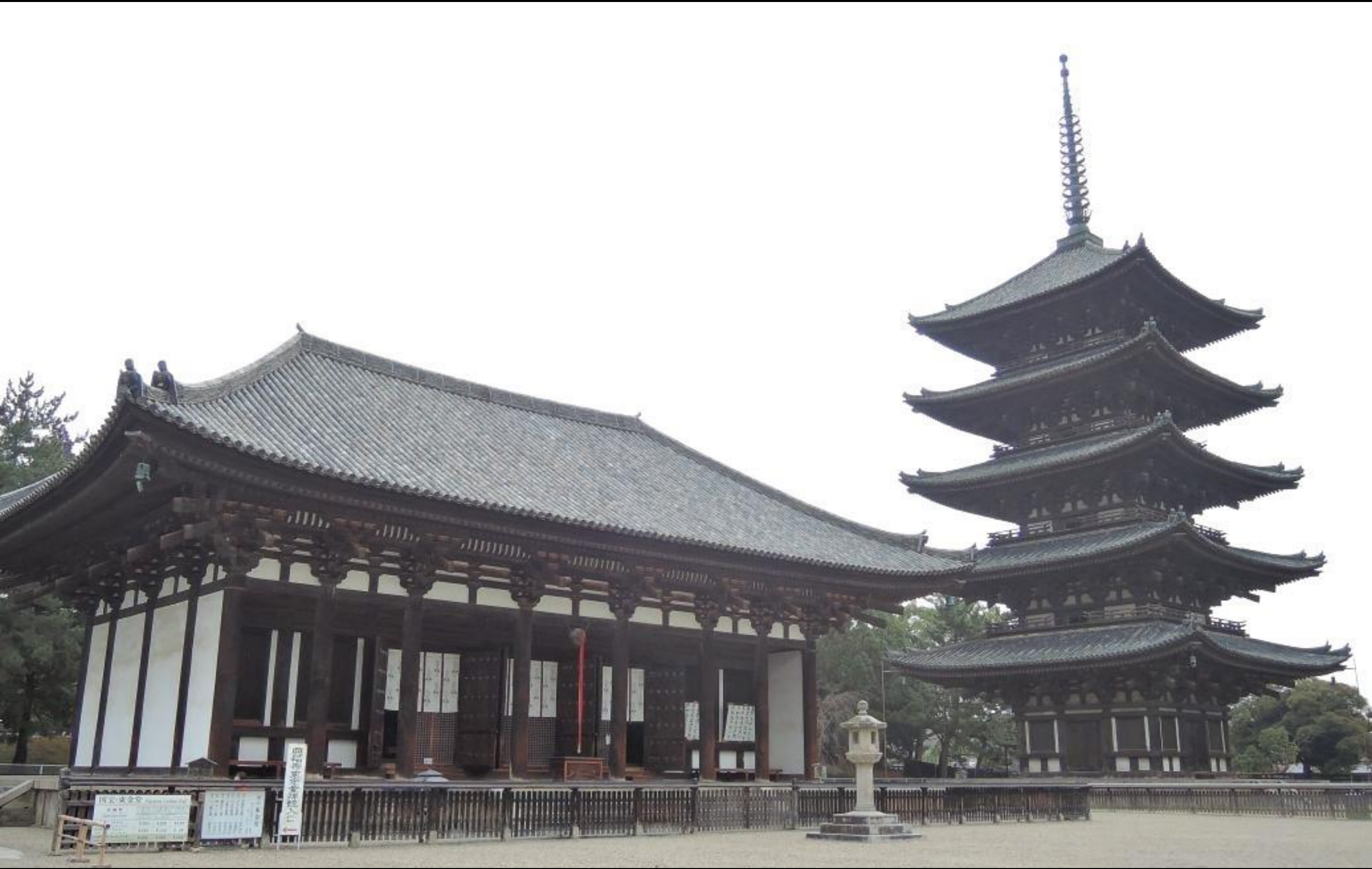
Shintō-Buddhist Syncretism

Kōfukuji and Kasuga



Mandala of Kasuga Shrine, 13th c.
Hanging scroll; ink and color on paper
Minamiichi-chō





Kōfukuji
Nara, Japan



Kasuga Grand Shrine
Nara, Japan

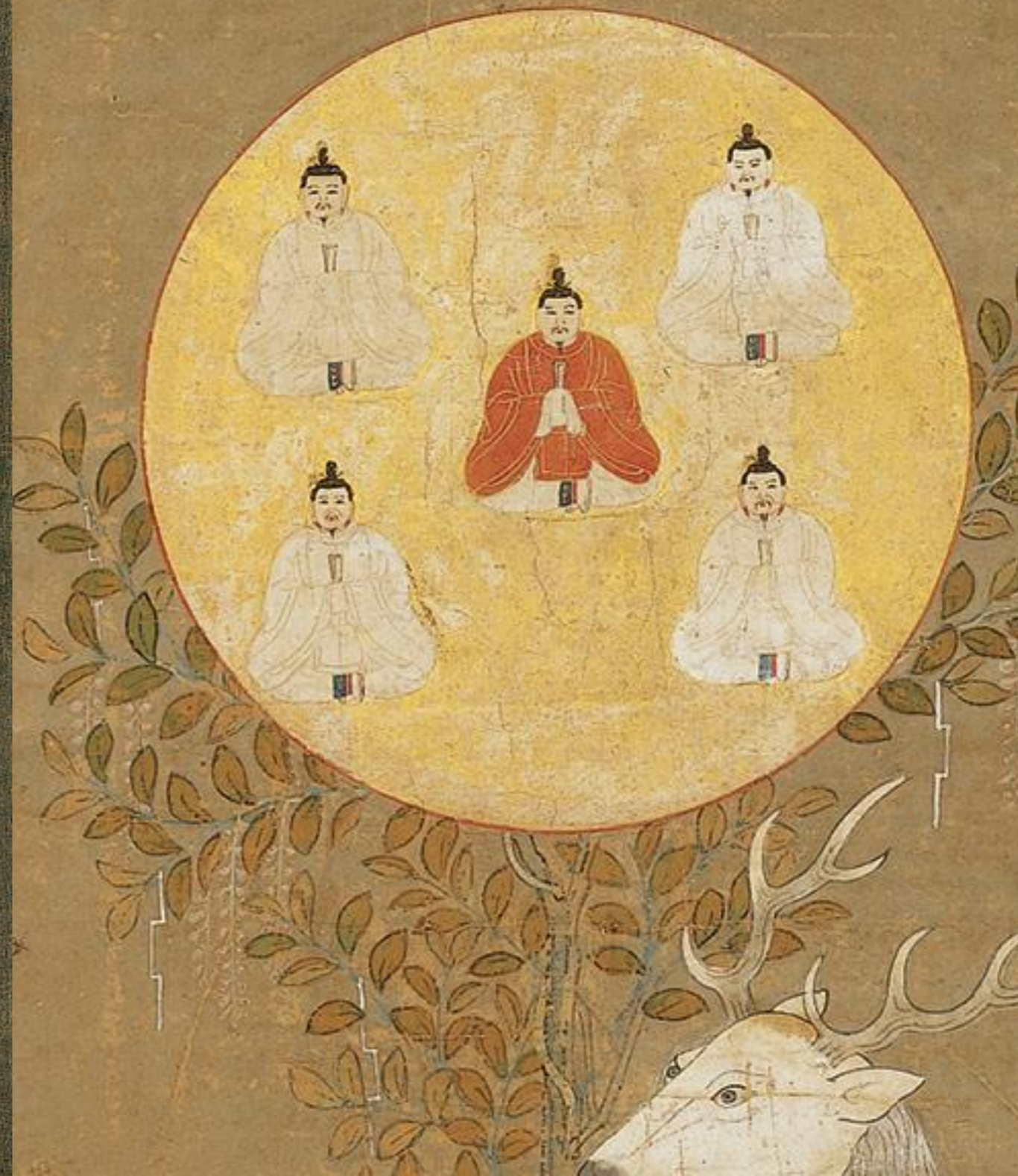




Deer Mandala of Kasuga Shrine, late 14th c.
Metropolitan Museum of Art



Deer Mandala of Kasuga Shrine, early 15th c.
Mia | 2015 33 20





The Buddhist Pure Land

Byōdōin



The Phoenix Hall at Byōdōin, constructed 1053
Uji, Japan







Welcoming Descent of Amida Buddha, 13th c.
Ink, color, and gold on indigo-dyed silk



Welcoming Descent of Amida Buddha, 13th c.
Ink, color, and gold on indigo-dyed silk







Taima Mandala, early 14th c.
Hanging scroll; ink, color, gold,
and cut gold, on silk
85.9



Taimadera



Jōchō

Amida Buddha, mid-11th c.



Amida Buddha, 12th c.
Wood with traces of gold and lacquer
78.20



Amida Buddha, 12th c.
Wood with traces of gold and lacquer
78.20

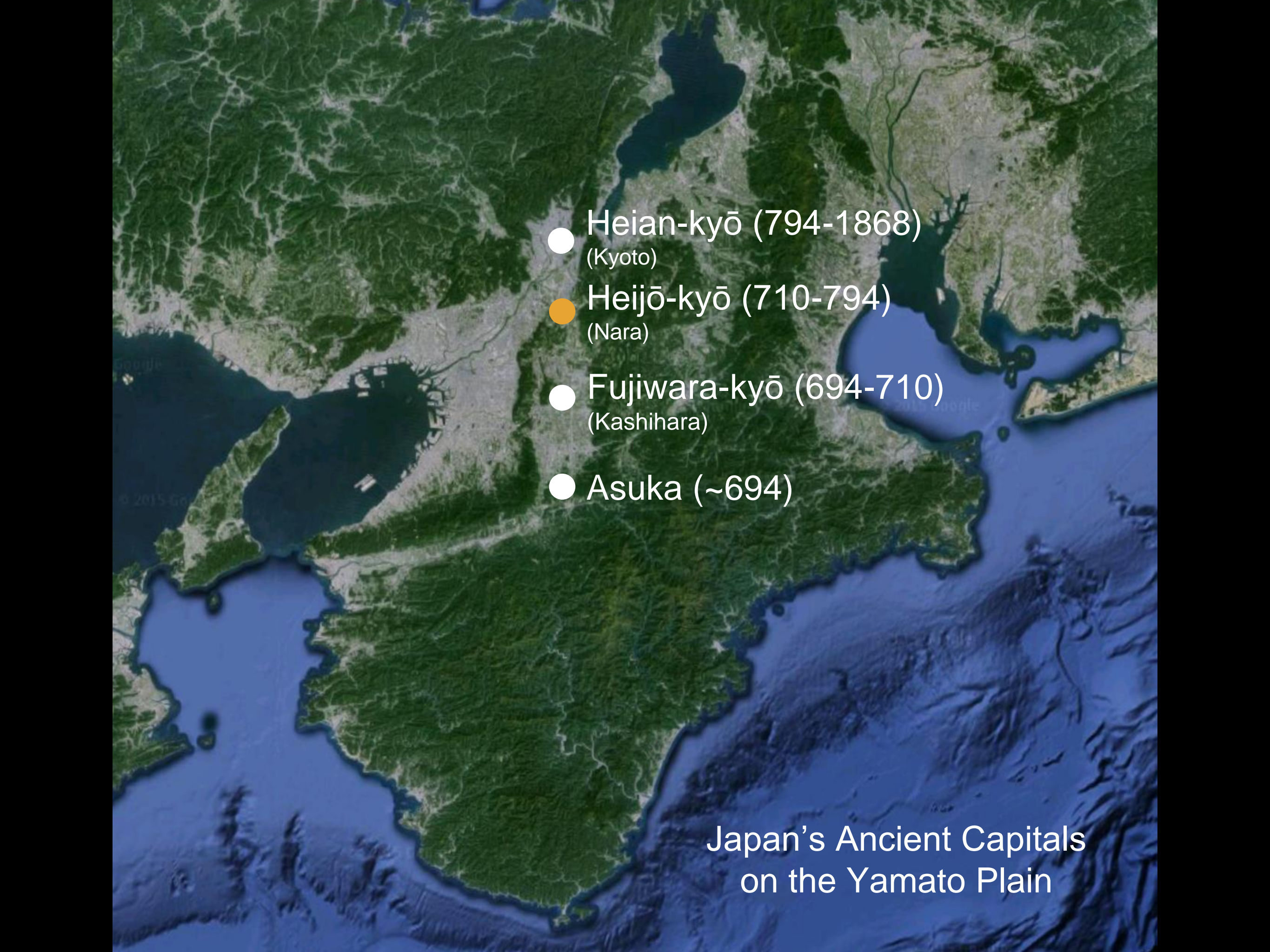


Amida Buddha, early 12th c.
Wood with traces of gold and pigment
L2015.33.265a-c



Great Amida Buddha, mid-12th c.
Kamakura, Japan

“Yamato e”

A satellite-style map of Japan, showing the main island of Honshu. The Yamato Plain is highlighted in a light tan color, indicating the location of four ancient capitals. The map shows the surrounding sea to the south and west, and mountainous terrain to the north and east. The text labels are overlaid on the map, with colored dots corresponding to the locations of the capitals.

● Heian-kyō (794-1868)
(Kyoto)

● Heijō-kyō (710-794)
(Nara)

● Fujiwara-kyō (694-710)
(Kashihara)

● Asuka (~694)

Japan's Ancient Capitals
on the Yamato Plain



“Senzui byōbu” (Landscape Screen), 11th century
Kyoto National Museum



Li Zhaodao (China, ca.675-c.750), ca.720-740 a.c.
Ink and colors on silk
National Palace Museum, Taipei



“Senzui byōbu” (detail), 11th century
Kyoto National Museum

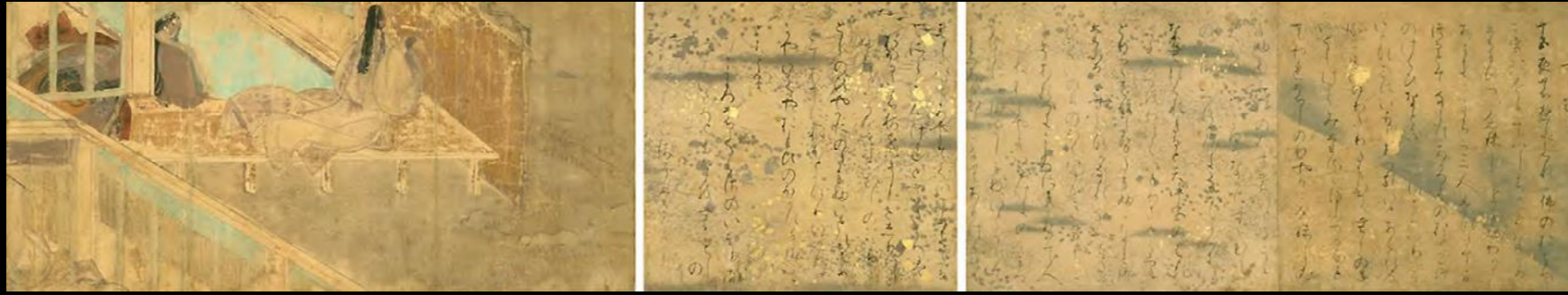


“Senzui byōbu” (Landscape Screen), 11th century
Kyoto National Museum



Shūtoku
Early Spring Landscape, 16th c.
Mia, Burke Coll.

The Tale of Genji



Fragments from the Illustrated Handscroll of the Tale of Genji (*Genji Monogatari Emaki*)
2nd quarter of the 12th century
Gotoh Museum, Tokyo



Scene from the "Kashiwagi" Chapter of the *Tale of Genji*
Fragment from the *Illustrated Handscroll of the Tale of Genji (Genji Monogatari Emaki)*
2nd quarter of the 12th century
Tokugawa Museum, Nagoya





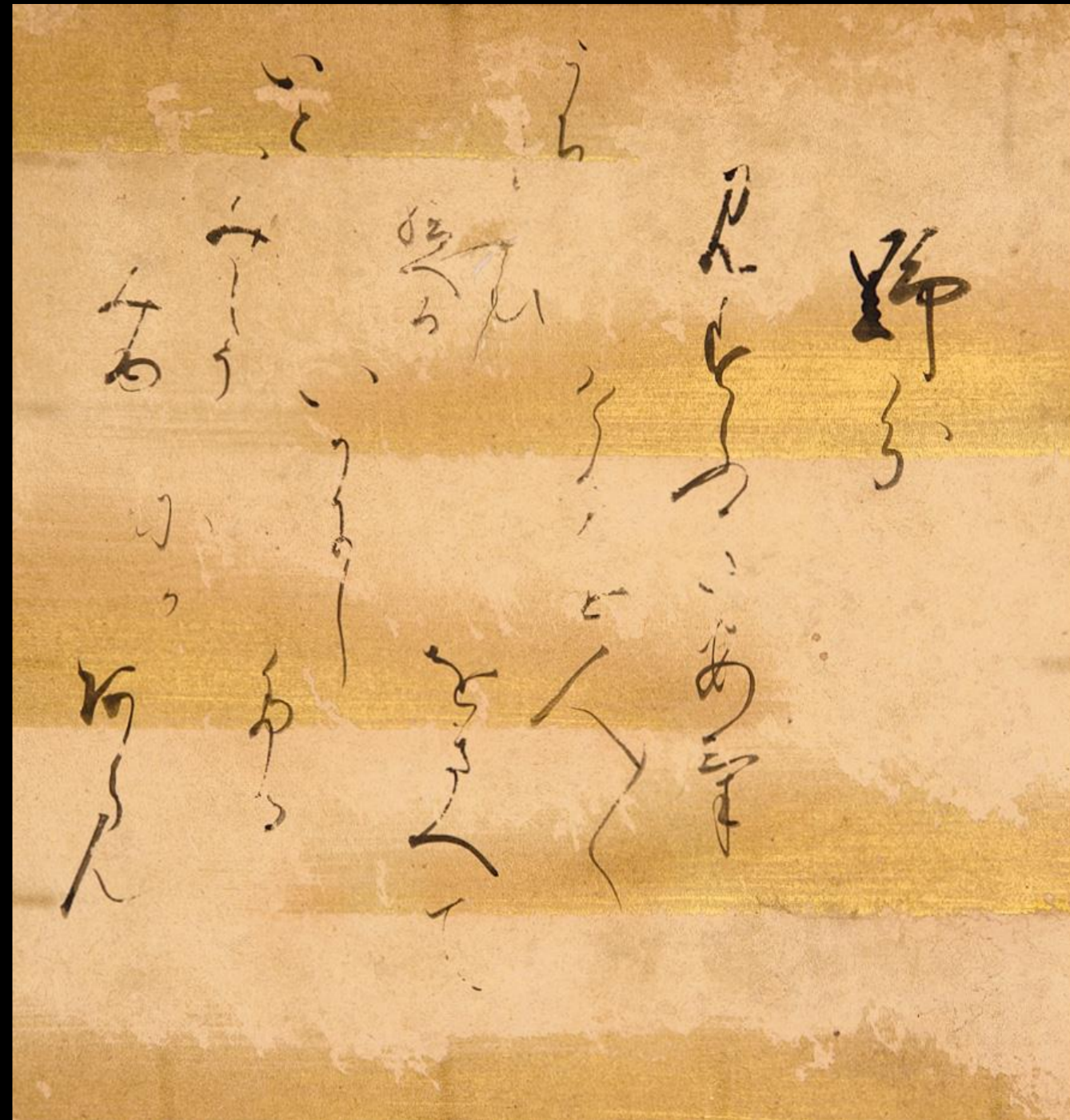
Mandala of Kasuga Shrine, 13th c.
Hanging scroll; ink and color on paper
Minamiichi-chō



Tosa Mitsuyoshi, Japanese (1539–1613)
“Kochō” from the *Tale of Genji*, late 16th-early 17th c.
80.40



Tosa Mitsushige, Japanese (active c. 1646–1710)
Fifty Four Scenes from the *Tale of Genji*, late 17th c.
Mia, Burke Collection



Tosa Mitsushige, Japanese (active c. 1646–1710)
“Nowaki Chapter” (from left screen), Fifty Four Scenes from the *Tale of Genji*, late 17th c.
Mia, Burke Collection



Tosa Mitsuoki, Japanese (1617 - 1691)

Landscape with Murasaki Shikibu writing at Ishiyamadera (Frontispiece to an album of the Tale of Genji
Harvard University Art Museums)



Tawaraya Sōtatsu, Japanese (d. 1640)
Seven Scenes from the *Tale of Genji*, early 17th c.
Mia, Burke Collection



Scenes from the *Tale of Genji* in Four Seasons (Autumn and Winter), mid-17th c.
2013.29.14.1-2



Sakai Hōitsu, Japanese (1761–1828)
Akikonomu, early 19th c.
Mia, Burke Collection



根原為業







Accessories Box with scenes from the Tale of Genji, 17th-18th century

Black lacquer with gold maki-e, silver flakes, sheet metal, and pictorial pearskin ground (e-nashiji); metal fittings

L2015.33.422a-m