

Baroque Art in Europe

Flanders and The Dutch Republic



Essential Characteristics of Baroque Art

1. Stresses naturalism or verisimilitude
2. Invites us to participate in mysteries of the infinite and eternal
3. Evokes emotionalism and preoccupation with the passions of the soul
4. Uses dramatic contrast between light and dark; uses light to depict rich textured surfaces
5. Uses asymmetrical composition, diagonals, and recession
6. Incorporates classical influence and allegory
7. Allows landscape, genre, and still life to emerge as legitimate categories of art



Once considered to be subjects of less importance, landscape, genre and still life painting emerges as legitimate and important .



Landscape



Meyndert Hobbema, *The Avenue, Middelharnis*, 1689, oil on canvas, National gallery, London



Genre – scenes from
everyday life

Gabriël Metsu, *Man Writing a Letter*, 1662-1665
National Gallery of Ireland, Dublin



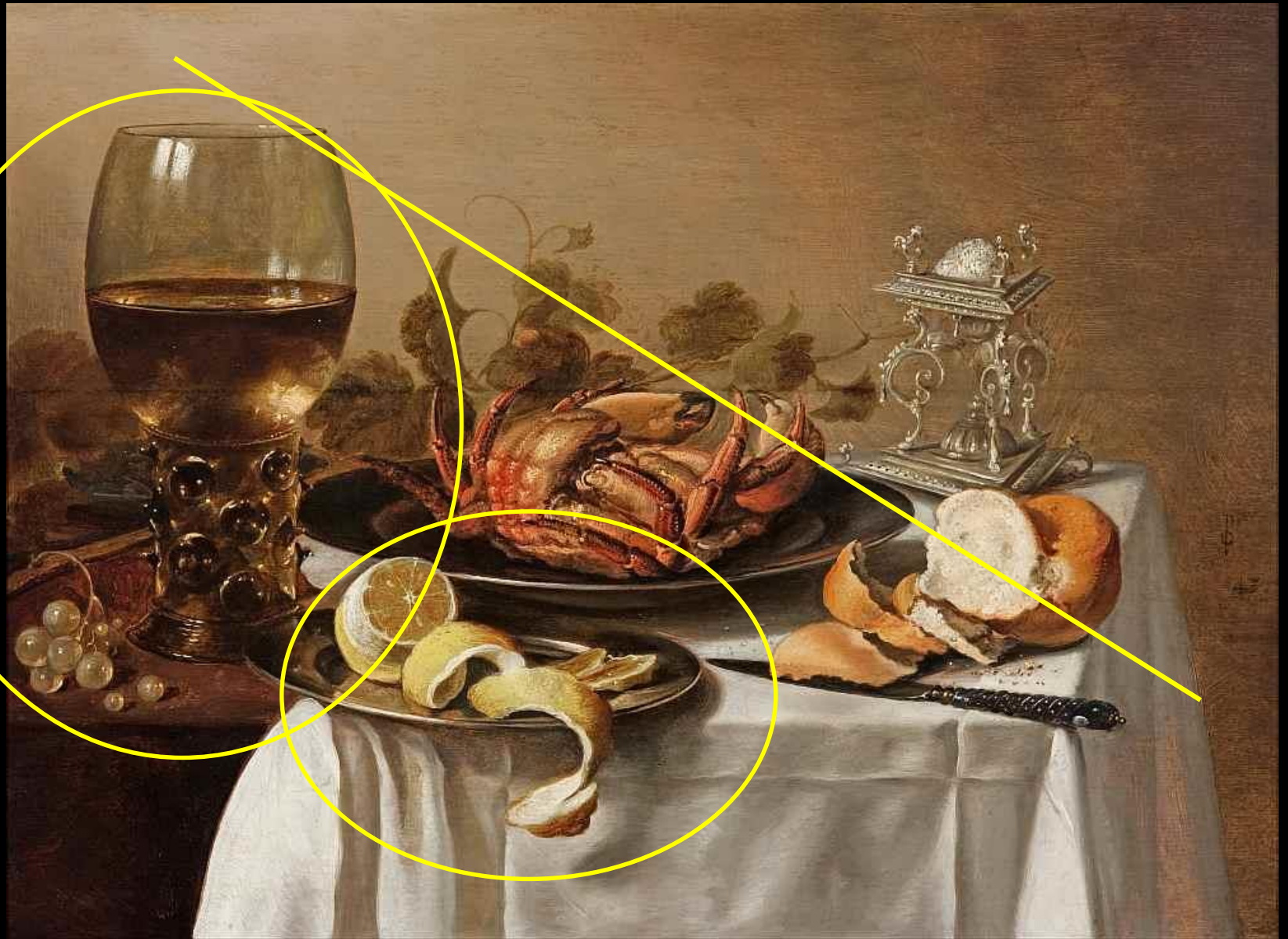
Still Life



Pieter Claesz, *A Still Life with a Roemer, A Crab and a Peeled Lemon*, 1643, private collection



- diagonal composition
- contrast of textures
- foreshortened space
- transparencies and reflections



Pieter Claesz, *A Still Life with a Roemer, A Crab and a Peeled Lemon*, 1645



Still Life

Vanitas



Pieter Claesz, *A Still Life with a Roemer, A Crab and a Peeled Lemon*, 1643, private collection







Flower Still Life



Rachel Ruysch, *Flower Still life*, after 1700, oil on canvas, The Toledo Museum of Art, Ohio



Your Assignment for April 20, 2016

Flemish and Dutch Baroque Art

Find one example for each of the following Flemish and Dutch painting categories from Mia's collections currently on view in the galleries. List three key characteristics of that style visible in the artwork. (Note: a hardcopy of this worksheet is posted on your IPE Website.)

- Landscape
- Genre
- Still Life
- Bonus Point! Flower Still Life

