

Hindu and Buddhist Art
in India and Southeast Asia
about 1000–1700

Arts of India

INDIA



Map not to Scale

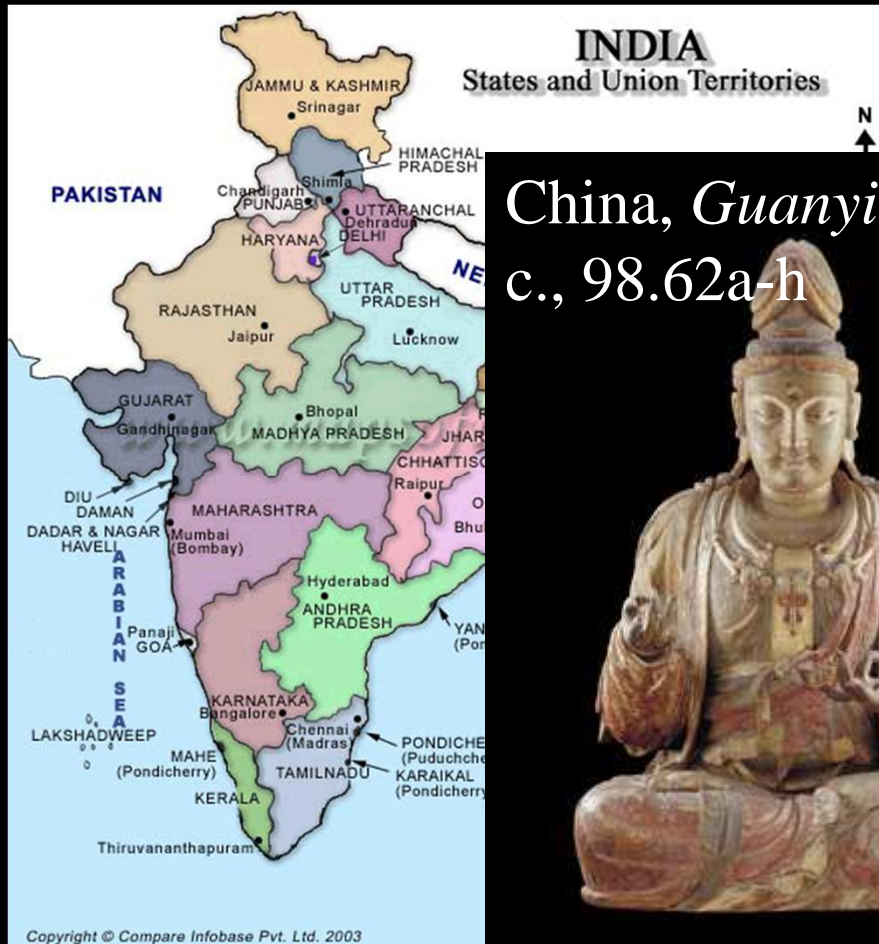
Spread of Buddhism from India



Key Ideas: Religions of India

- Buddhism declines in India after 8th century; by 12th century has largely moved into northeast region (Tibet and Nepal) where a sect called Tantric or Vajrayana develops

China, *Avalokitesvara*,
1403-24, 98.77.2



China, *Guanyin*, 11th-12th
c., 98.62a-h

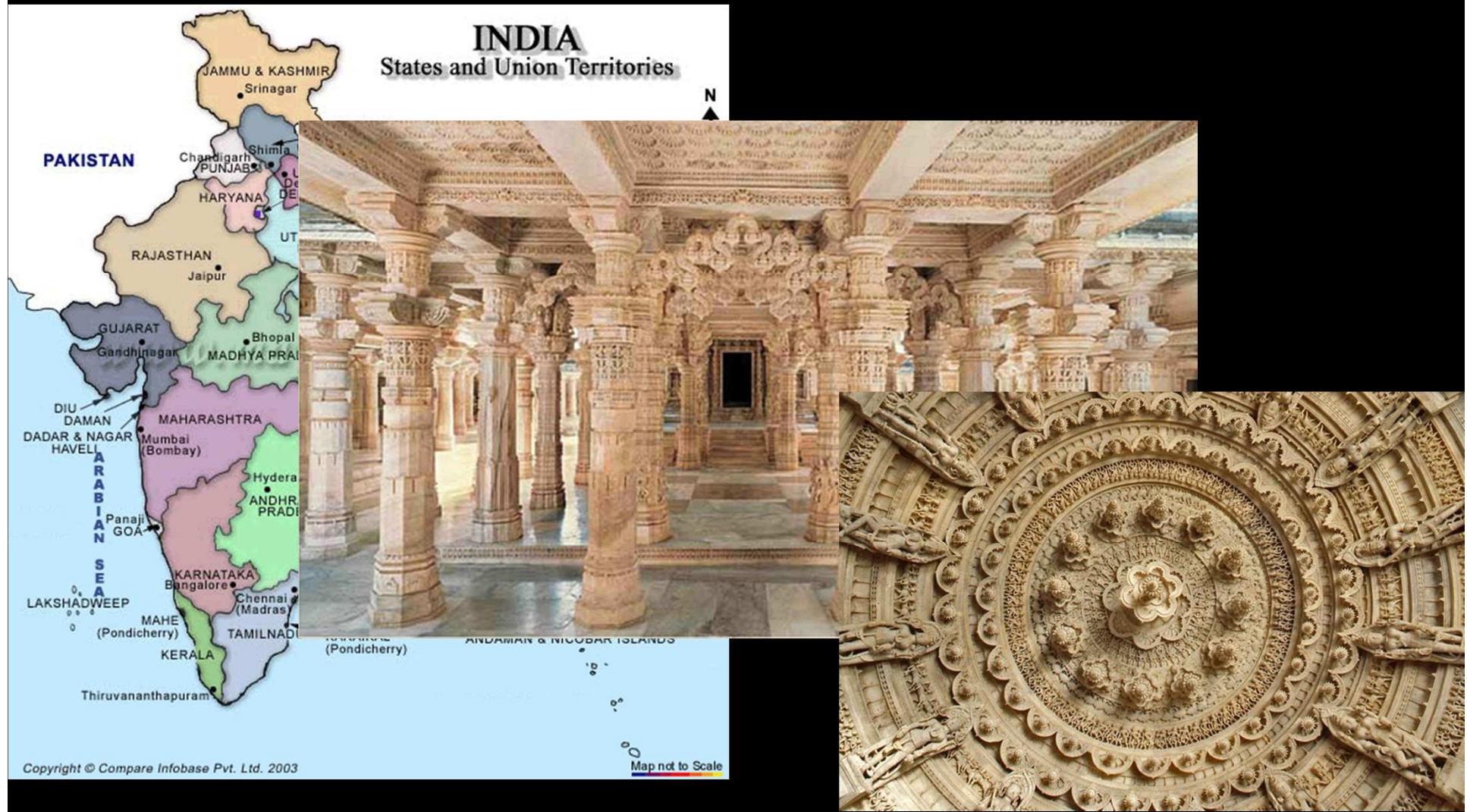


Tibet, *Chakrasamvara*
Embracing Vajravarahi,
15th c., 97.156.2a,b



Key Ideas: Religions of India

- Jainism maintains a stronghold in Gujarat; believers engage in banking and trade and sponsor magnificent temples



Key Ideas: Religions of India

- Islamic forces take control of northern India in 13th-18th centuries and eventually build an empire throughout most of subcontinent



Key Ideas: Religions of India

- Hinduism flourishes: vast temple complexes contain central and gateway towers embellished with 1000s of gods and goddesses; artists depict stories as teaching aids





Brahmin (priest)

Devotee offers prasad



Vishnu Stele, 1100

Avatar #8 is Krishna



Lakshmi



Sarasvati



Garuda



The Buddha and Kalki





The Gopies Seek Krishna in the Forest, c. 1525, 95.4.1





Ashoka tree

Krishna dancing with the gopies (cowherdesses)



The Adoration of Krishna, c. 1700, 90.34



*The Infant Krishna
Carried Across the
Jumna River, about 1720,
93.3*



Arts of Southeast Asia

Green Travel Limited

INDIA

MYANMAR (BURMA)

YUNNAN (CHINA)

CHINA

LAOS

THAILAND

CAMBODIA

VIETNAM

MALAYSIA

ANDAMAN SEA

GULF OF THAILAND

SOUTH CHINA SEA

Indochina

Indochina

SE Asian Art: Key Ideas

- Indian merchants and settlers bring their artistic traditions and ideas about government, philosophy, religion, and literature to SE Asia
- Images of the Buddha from Mathura and Sarnath schools serve as prototypes for SE Asian Buddhist imagery
- SE Asian countries revere the same Buddhist and Hindu deities, but manifest them in different forms, based on individual cultures' needs and customs
- Kings and queens are worshipped as incarnations of Hindu or Buddhist deities
- Large temple complexes are built as residences of deities and representations of the cosmos

Mathura, India, *Standing Buddha*,
5th century, mottled red sandstone



Thailand, Amaravati style, *Buddha Shakyamuni*, 6th-8th c., L96.125.34

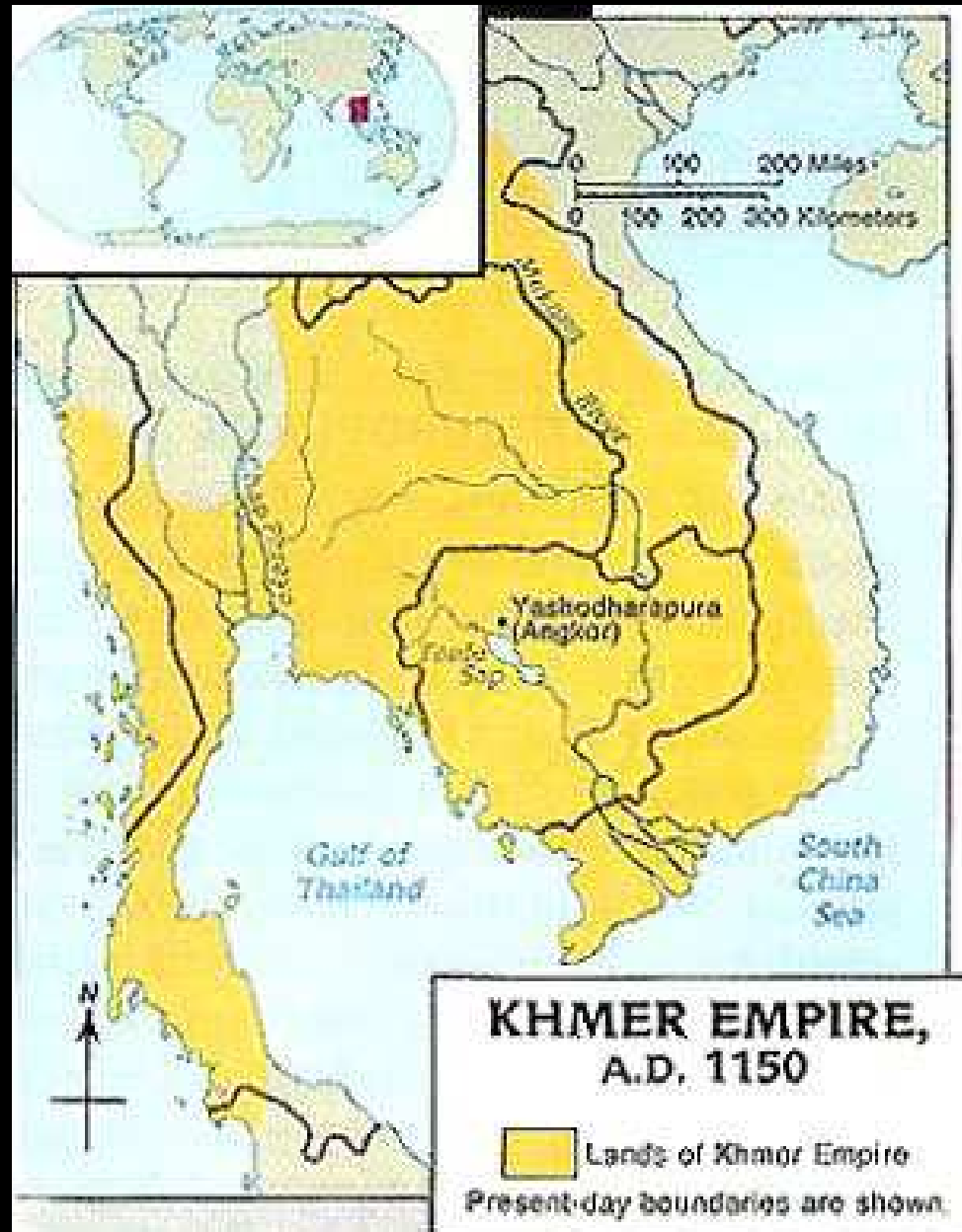


India, Sarnath style,
Standing Buddha, 5th- 6th c.



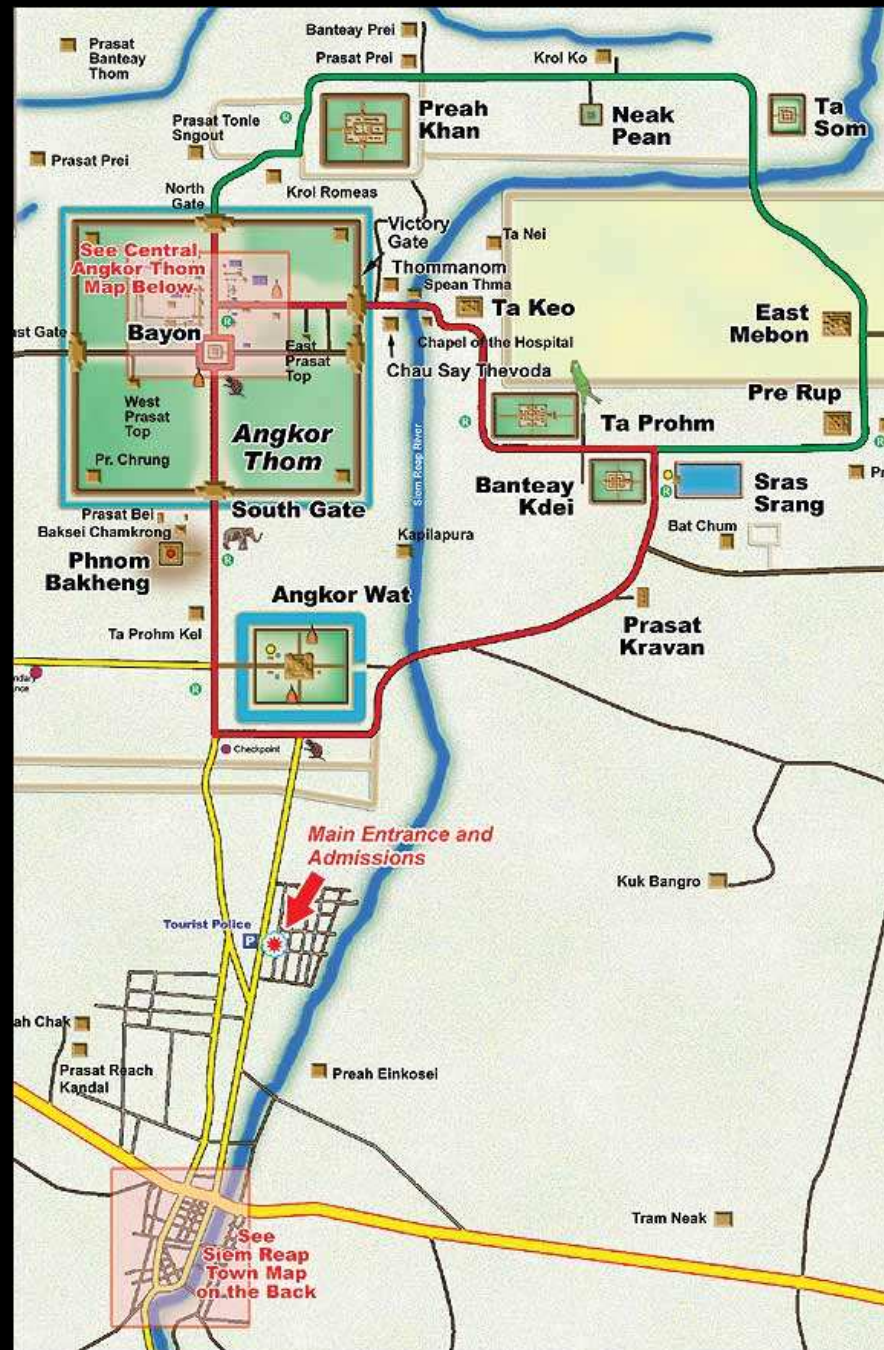
Thailand, Sarnath style,
Buddha, 7th-8th c., L96.125.35





Shiva Linga





Cambodia, Angkor Wat, 12th c.



Angkor Wat, Apsaras
(celestial beings)



Cambodia, Angkor Thom, The Bayon, 12th–13th c.





Cambodia, Bayon style,
Head of Buddha, 12th-13th c.,
50.46.222



Deified King/Hindu Deity,
early 9th c., 69.86.1



Cambodia, *Lokesvara*, 12th-13th c.



China, *Guanyin*, 12th c.



Prajnaparamita, about 1200,
97.105



Devi as Uma (Parvati), 15th c.





Cambodia, Bayon Style,
Guardian Lion, 12th-13th c.,
L94.63.2



Cambodia, Angkor style, *Hindu*
Ritual Altar Bell, 12th c., 91.22.2



Cambodia, *Vishnu on Garuda*,
12th-13th c., 99.216.7

Garuda (from Vishnu Stele)



Kingdoms of Sukhothai and Lan Na, 13th c.



Thailand, *Walking Buddha*, 15th c.,
31.115





Burma, *Enshrined Buddha*, about
1800, 89.55



Thailand, *Seated Buddha*, 15th c.,
31.116



© QT Luong / terragalleria.com



Shiva's Family, 1000



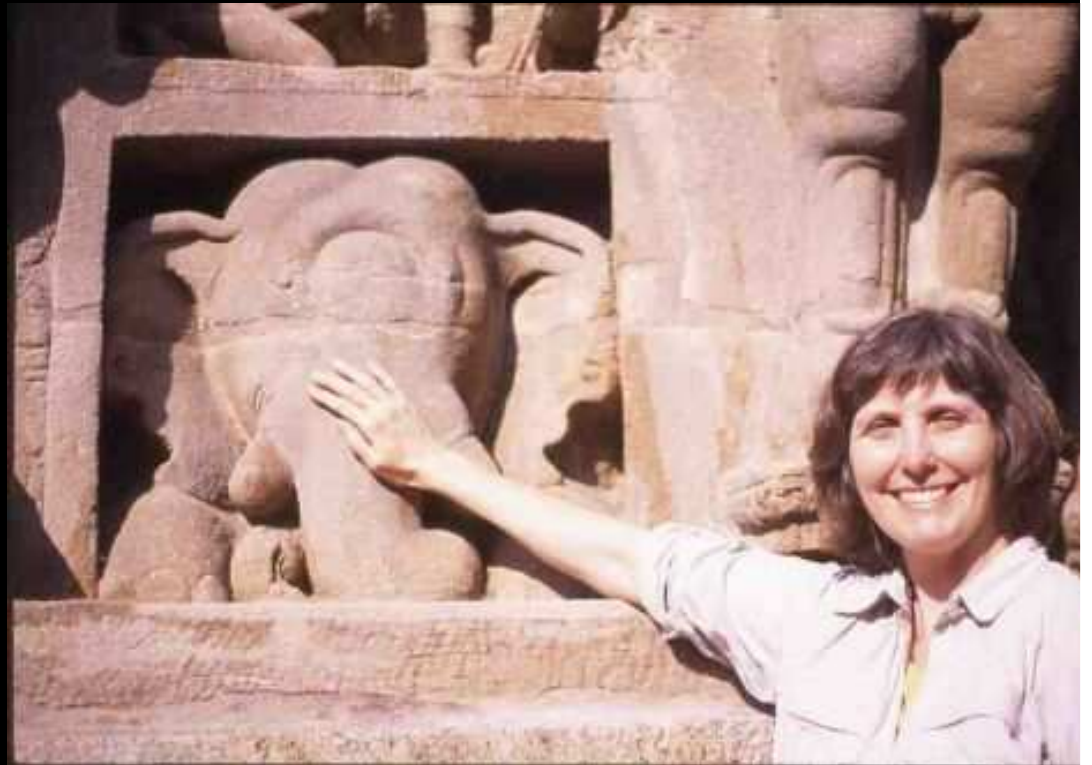


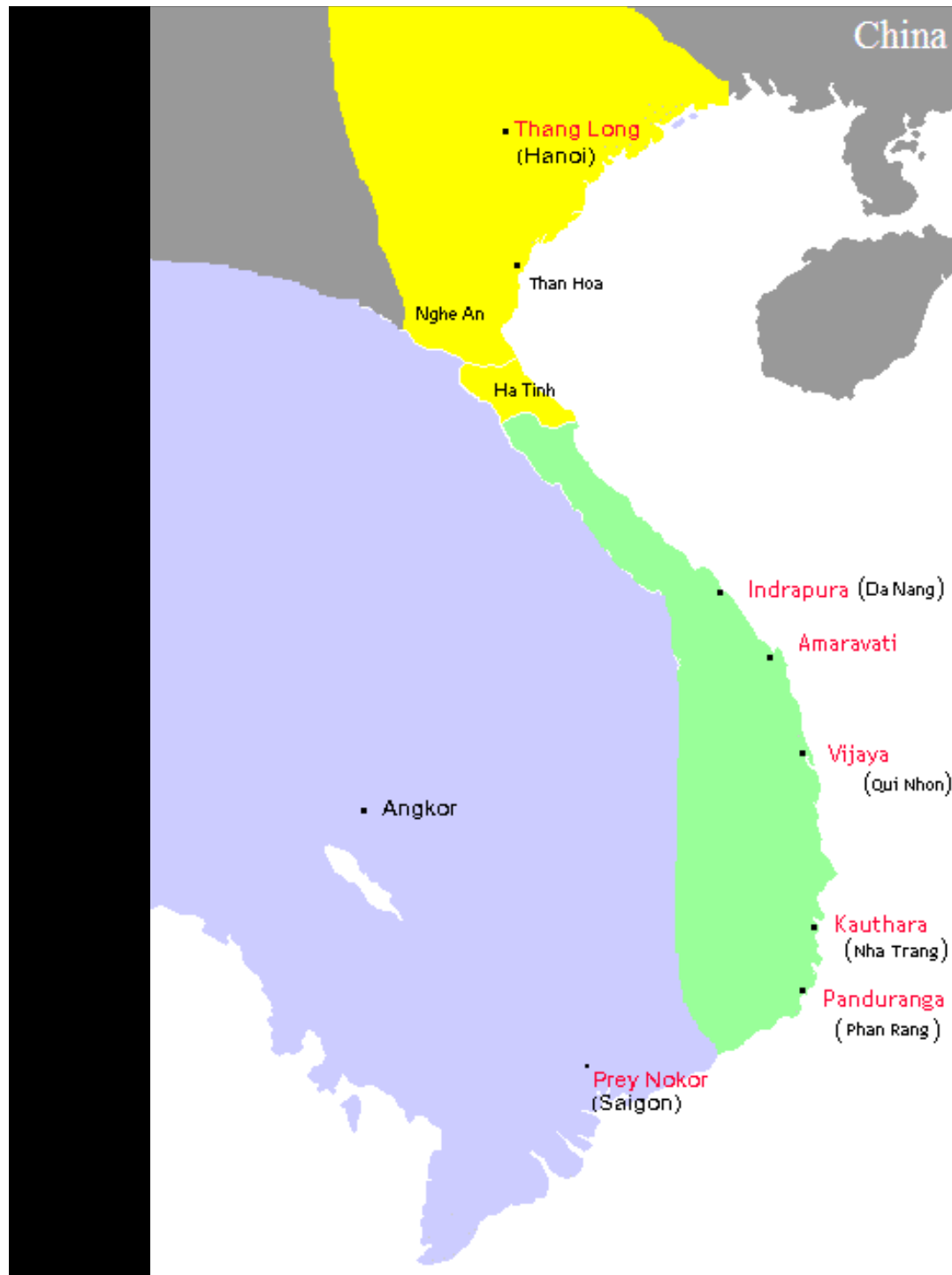
Indonesia, *Ganesha*, 10th -11th c., 2003.198



Indonesia, *Ganesha*, 10th -11th c., 2003.198







Vietnamese kingdoms, c. 1100

yellow – Dai Viet (Ly)

green – Champa

purple – Khmer

Vietnam, Cham culture, *Deified King*,
late 10th c., 2003.59

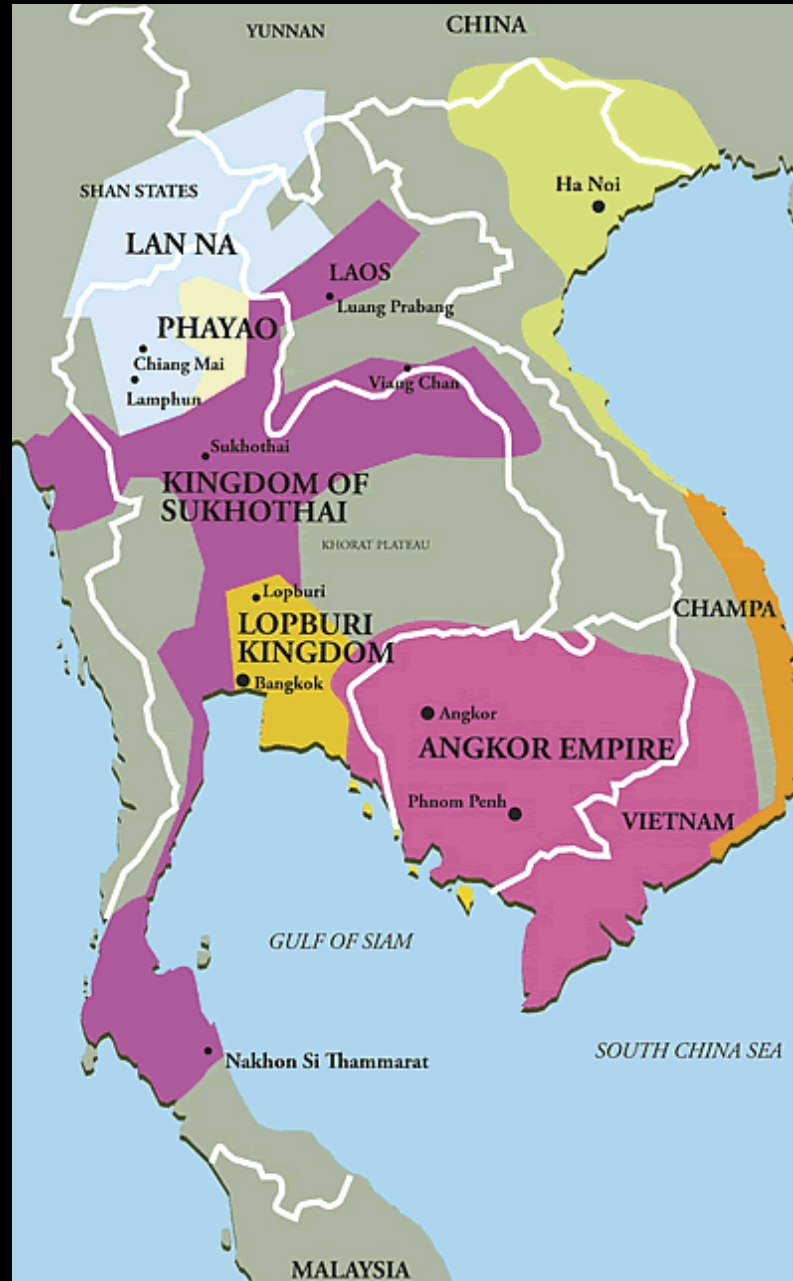




Southeast Asian Ceramics

Thailand

Kingdoms of Sukhothai and Lan Na, 13th c.



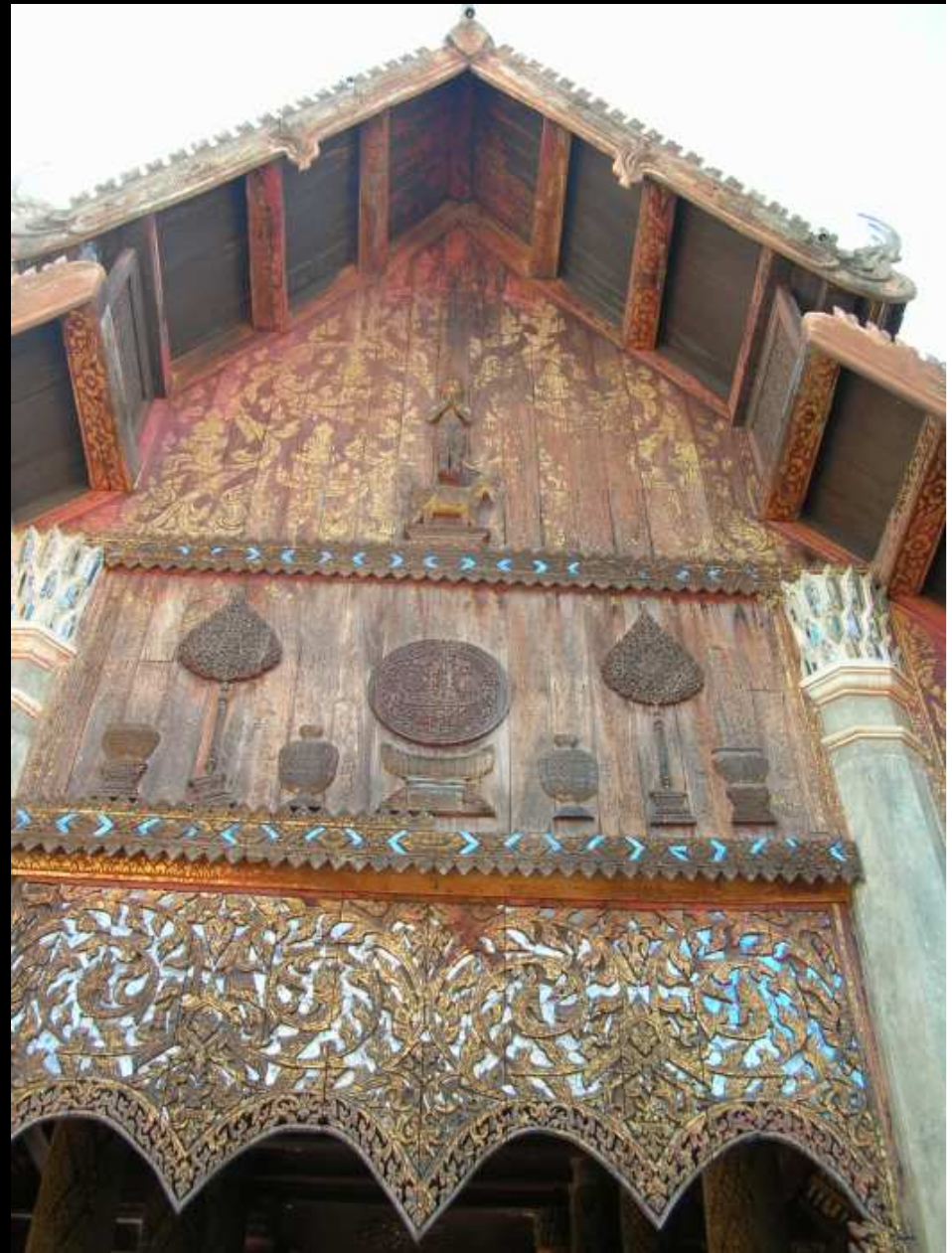
Ban Chiang (Thailand), *Jar*,
300 BCE-100 BCE,
earthenware and pigment,
99.145.2





South-East Asia — Location of Kiln Sites

Kingdom of Lan Na, Northern-style temples



Kalong kilns, *Plates*, 15th c., stoneware with underglaze brown decoration, 87.72.5 and 87.73



Kalong kilns, *Monochrome*
bowl, 15th c., stoneware with
light blue celadon glaze,
87.72.6



Kingdom of Sukhothai, Southern-style temples





Replica of a Sukhothai
period cross-draft kiln

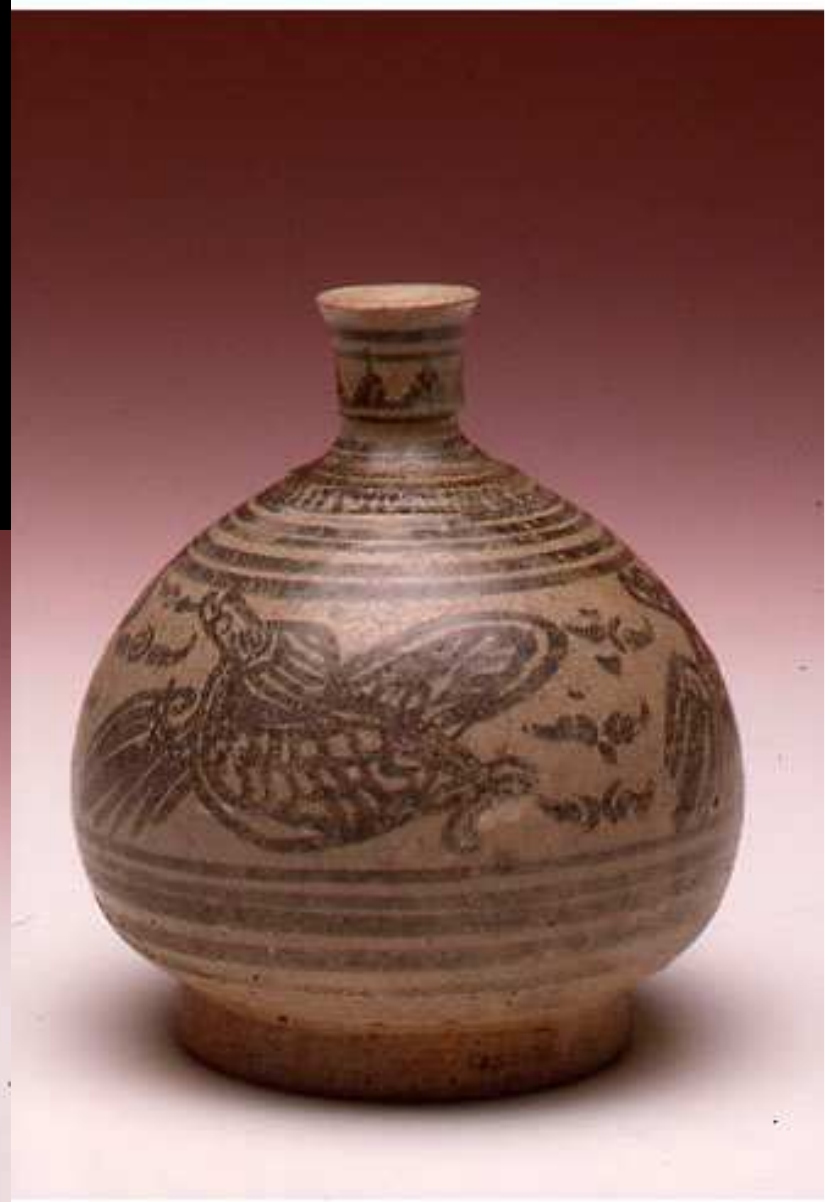
Modern example based on
14th-c. style



Sawankalok *Bowl*, 14th c., stoneware with incised
décor under celadon glaze, 87.76



*Plate with fish design and
Vase with bird design, 15th c.,
earthenware, glaze and
underglaze, 91.27 and 91.28.2*



Kendi (water bottle), 14th-15th c.,
stoneware, underglaze pigments, and
glaze, 94.21.2



Korea, *Kundika*,
12th-13th c., bronze,
76.72.39



*Bottle jar, 14th-15th c.,
stoneware, underglaze
pigments, and glaze, 94.22*



Vietnam



Bowl with lid, 13th-14th c., glazed stoneware,
2000.82.3a,b





*Pair of wine cups, Ly dynasty, 13th-14th c.,
stoneware and celadon glaze, 92.41.1,2*



Bottle vase, Le dynasty, late 15th c., slip-covered stoneware with underglaze cobalt blue decor, 2007.19.2

