

How People Lived

18th-Century European and American Decorative Arts



Rococo

Characteristics: robust carving, asymmetrical, sensuous curves, vertical

Design Elements: cabriole leg, pad foot, ball-and-claw foot, shells, flowers, fans

Substyles:

France: Rococo/ Regence/ Louis XV

England: Queen Anne/ Early Georgian/ Chippendale

America: Queen Anne/ Chippendale





Chantilly, Bust of Louis XV, French,
1745-50, Soft-paste porcelain 83.140



Grand Salon from the Hôtel Gaillard de la Bouëxière, French, about 1730

De la Bouëxière Ewer

Vincennes Porcelain Factory, France,
c. 1740-1758, painted and glazed
porcelain, gilt, 2010.56





Alexandre Roslin, Comtesse
d'Egmont Pignatelli, 1763
2006.3

Charles Cressent, Louis XV Commode, French, about 1745 79.11



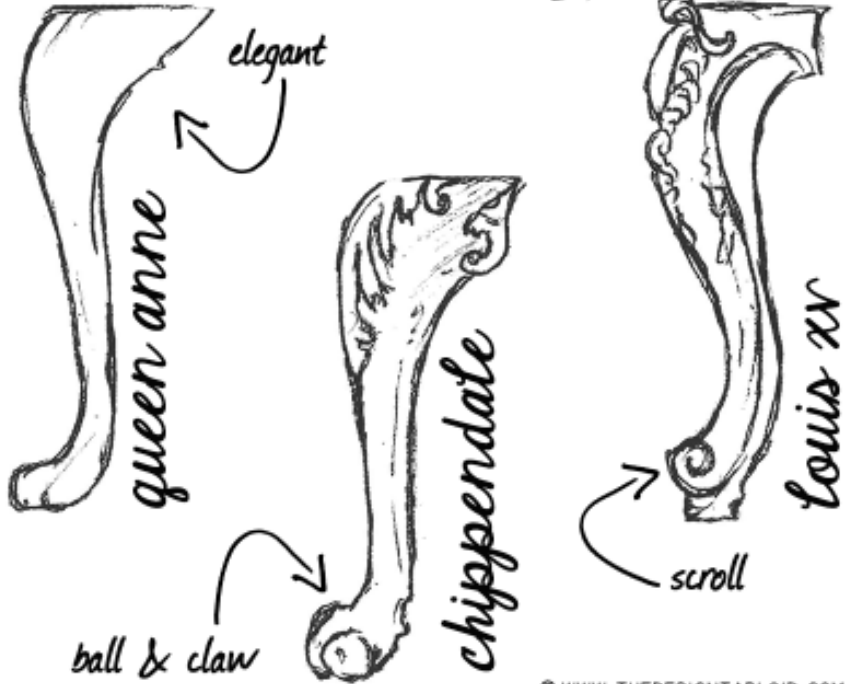


Attributed to Charles Cressent, Abraham Gudin, Jacques Gudin, André Charles Boulle, Wall Clock with Bracket, French, about 1725 80.1a-d

Jean Gaspard Feilt,
French, *Bureau de Dame*,
Lady's writing desk, about
1750, kingwood, oak, gilt
bronze, 80.35a-1



cabriole legs



Cabriole shaped leg, fresco from Herculaneum



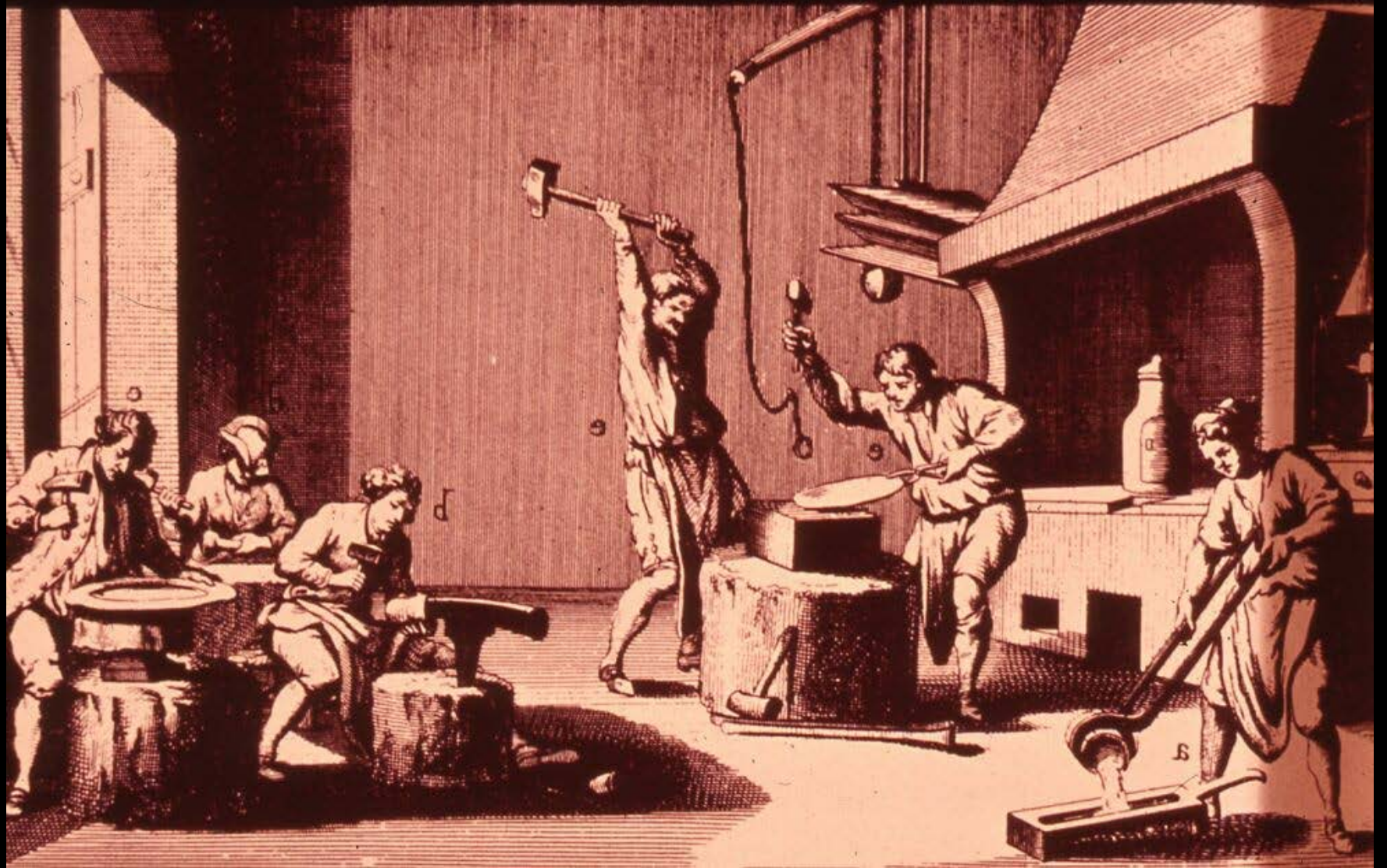
Cabbage Tureen, Strasbourg Manufactory, French, before 1754, faïence 84.85a-c



Vase, Derby Porcelain
Factory, England (Derby),
about 1758-69, porcelain,
84.89



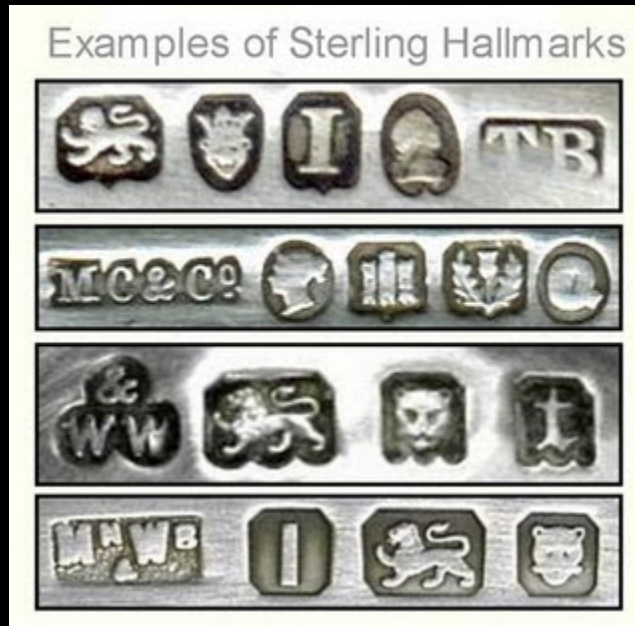
Johann Baer, Strasbourg, French Masterpiece
cup and cover, 1746, silver, 2010.11.1a-c





Johann Heimlich, French,
Portrait of the Silversmith
Johann Friedrich Baer, 1770,
2010.11.2

Hallmark



https://www.youtube.com/watch?v=1opMwv8_b3s











Neoclassicism

Charles Clement Bervic, Louis XVI, French, 1790, engraving
P1,750



Neoclassicism

Characteristics: symmetry, flat surfaces, clean, straight lines, geometric designs

Design Elements: tapered legs, saber legs, embellished with inlays, reeding/fluting, motifs inspired by ancient Greece, Rome and Egypt, urns, swags

Substyles:

France - Louis XVI/ Directoire/ territory styles

England – Adamesque style

America – Federal/ Empire/ Late Classical styles



Pierre Antoine Foullet, Commode, French, 18th century 82.1







Jean-Antoine Lepine and
Joseph Coteau, Astronomical
Mantel Timepiece, about
1789, white marble and
ormolu, about 1789
88.88.1







Georges Jacob, Duchesse d'enfant brisee (child's chair), French, about 1780, wood, gilt, modern upholstery 88.88.2.1



Charles Percier; Designer:
Pierre François Léonard
Fontaine; Maker: Georges
Jacob, Armchair, c. 1796,
Mahogany (modern
upholstery) 81.102



Attrib. Pierre Philippe-Thomire and Joseph Coteau, Clock with Vestals, about 1785
marble, bronze gilt 82.25

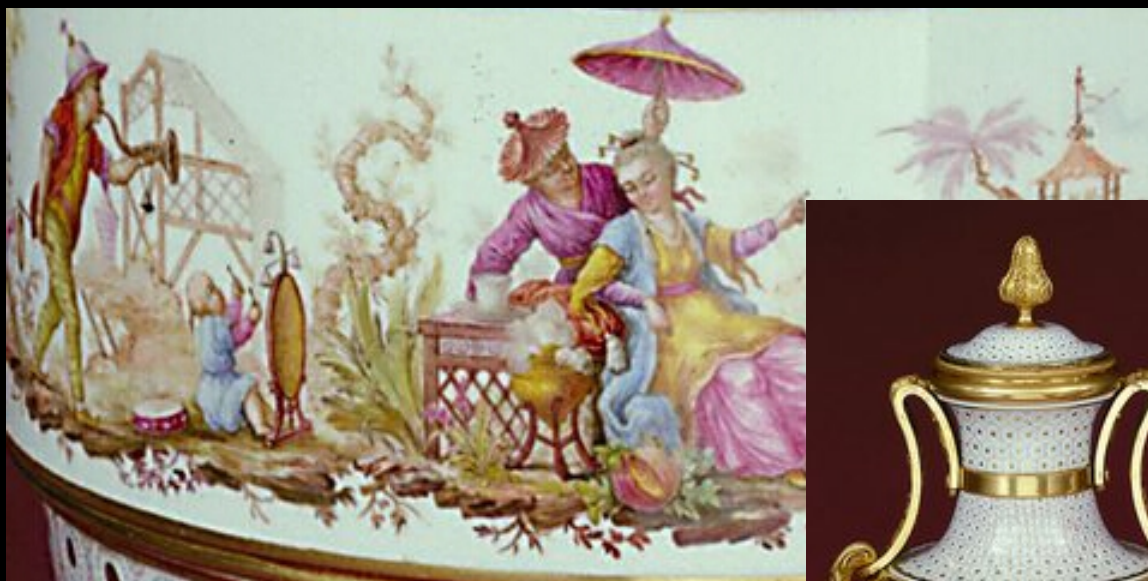


Joseph Weinmuller, Ludswigsburg Factory, Chinese Musicians, German, porcelain, 1767
99.217.435.1



Claude Charles Saunier, Cabinet, French, about 1765 77.30





Sèvres, Covered Vases, 1780
porcelain, enamel, gilt bronze
80.36.1a,b



Queen Anne in England

Queen Anne Room, Stafforshire, England, 1720-30 31.58







Sir Godfrey Kneller, German, Portrait of a Young Man, oil on canvas 80.68.9



England, (London), Delft Shoe, tin-glazed earthenware, about 1720 96.36.7.1

Pair of Side Chairs, English, 1710, walnut and walnut veneer 31.71.1,2





William and Mary, side
chair, early 1700s



Pair of Continuous Yoke-back Armchairs, Ming dynasty, huanghuali 91.69.1,2

Wing back chair, English, about 1705,
walnut, upholstered in a Mortlake tapestry,
31.96



Georgian Style in England

Pair of Side Chairs, English, 1710, walnut with walnut veneer 31.90.1,2



Georgian Room, 1740, possibly from Stanwick Park, Yorkshire England 28.82



Stephen Slaughter, *The Edward Walpole Children*, 1747, English, oil on canvas
31.106





Pole Screen, 1730-35, mahogany with tapestry fragment 31.91



Card Table, England, mid-18th century, mahogany 17.57





Detail from Imperial Portrait of Prince Duo Lo,
about 1775, China 83.30



Tilt-top Tea Table, English,
mahogany 17.56

Abraham Portal, English, Teapot, 1768, silver, wood handle 86.46



England (Stafforshire), Teapot with Cover and Stand, 1740 agate ware 92.158.15



Thomas and William Whipham,
Coffee Pot, English, 1750-51, silver
and wood handle, 85.42.6





George Garthorne,
Chocolate Pot, English,
1686, silver, wood
99.28.a,b



Branford Connecticut,
The Connecticut
Room, mid-1700s
28.59

T H E
GENTLEMAN and CABINET-MAKER'S
D I R E C T O R :

Being a large COLLECTION of the
Most ELEGANT and USEFUL DESIGNS
O F
HOUSEHOLD FURNITURE,
In the Most FASHIONABLE TASTE.

Including a great VARIETY of

CHAIRS, SOFAS, BEDS, and COUCHES; CHINA-TABLES, DRESSING-TABLES, SHAVING-TABLES, BASIN-STANDS, and TEAKETTLE-STANDS; FRAMES for MARBLE-SLABS, BUREAU-DRESSING-TABLES, and COMMODES; WRITING-TABLES, and LIBRARY-TABLES; LIBRARY-BOOK-CASES, ORGAN-CASES for private Rooms, or Churches, DESKS, and BOOK-CASES; DRESSING and WRITING-TABLES with BOOK-CASES, TOILETS, CABINETS, and CLOATHS-PRESSES; CHINA-

CASES, CHINA-SHELVES, and BOOK-SHELVES; CANDLE-STANDS, TERMS for BUSTS, STANDS for CHINA JARS, and PEDESTALS; CISTERNS for WATER, LANTHERNS, and CHANDELIERS; FIRE-SCREENS, BRACKETS, and CLOCK-CASES; PIER-GLASSES, and TABLE-FRAMES; GIRANDOLLES, CHIMNEY-PIECES, and PICTURE-FRAMES; STOVE-GRATES, BOARDERS, FRETS, CHINESE-RAILING, and BRASS-WORK, for Furniture.

A N D O T H E R
O R N A M E N T S.

TO WHICH IS PREFIXED,

A Short EXPLANATION of the Five ORDERS of ARCHITECTURE;

WITH

Proper DIRECTIONS for executing the most difficult Pieces, the Mouldings being exhibited at large, and the Dimensions of each DESIGN specified.

The Whole comprehended in TWO HUNDRED COPPER-PLATES, neatly engraved.

Calculated to improve and refine the present TASTE, and suited to the Fancy and Circumstances of Persons in all Degrees of Life.

By THOMAS CHIPPENDALE,
CABINET-MAKER and UPHOLSTERER, in St. Martin's Lane, London.

THE THIRD EDITION.

L O N D O N :

Printed for the AUTHOR, and sold at his House, in St. Martin's Lane;
Also by T. BECKET and P. A. DE HONDT, in the Strand.

MDCCCLXII.



T. Chippendale del. et lith.

Published according to an Act of Parliament, 1756.

J. B. Goussier sculp.

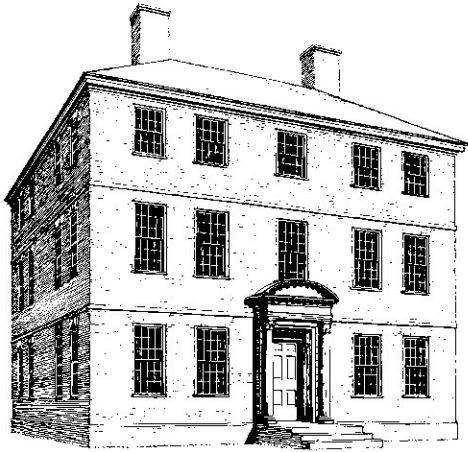
FAC-SIMILE OF A PAGE IN CHIPPENDALE'S "DIRECTOR."
(The original is folio size.)

Colonial North America

Providence Parlor, Providence RI, 1771



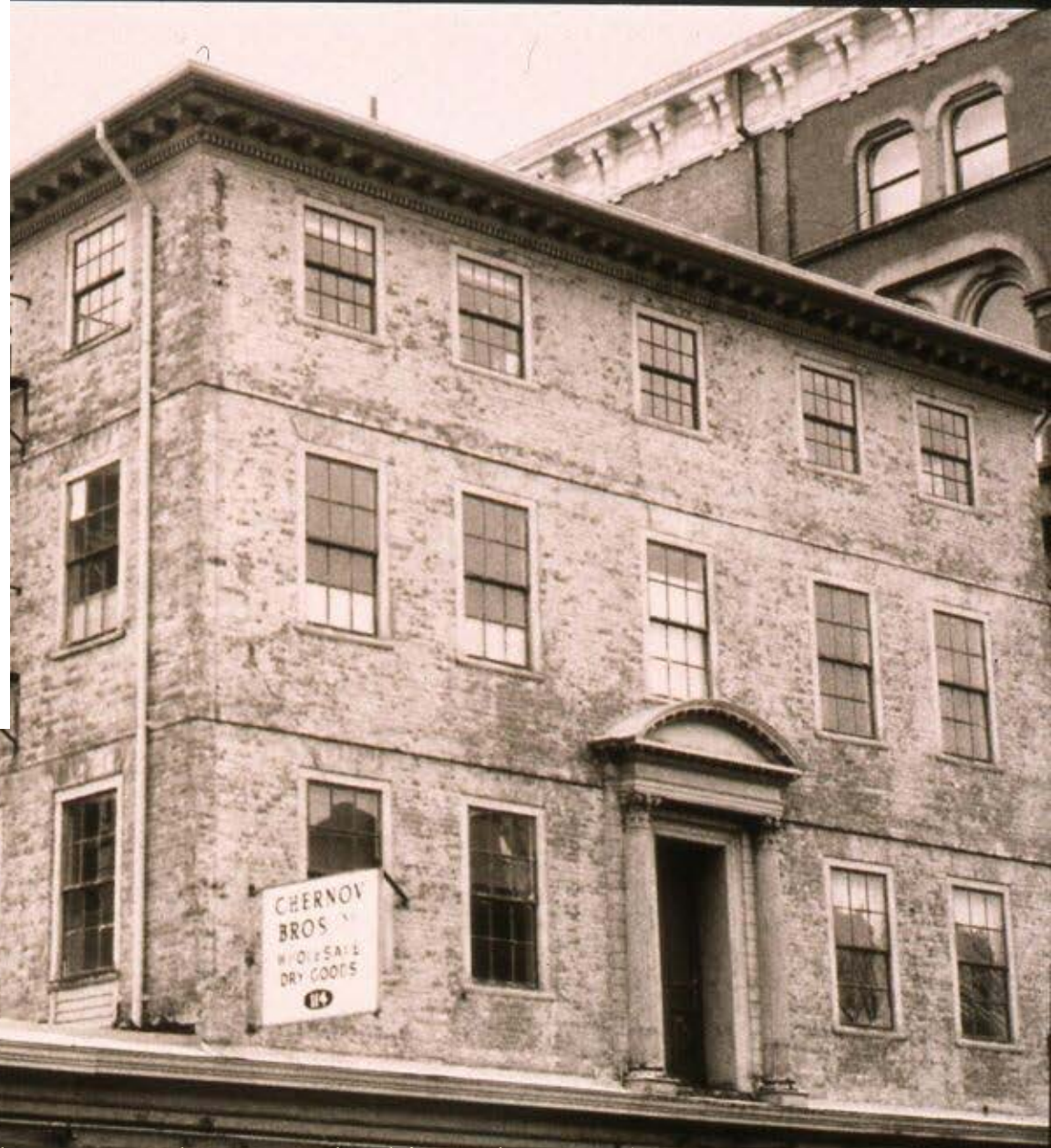




THE JOSEPH RUSSELL HOUSE

PROVIDENCE, RHODE ISLAND

BUILT IN 1775



Exterior of Russell House, Photographed in February 1996.



Folding Card Table,
American, 1750,
mahogany 31.17.9 a,b





William Russell House, Providence RI, Room as it appeared in the Russell House, view towards fireplace and doorway. Photograph taken around 1920.





Providence Room, installation
about 1924



Providence Room, early installation



North America (Massachusetts,
Boston), Side Chair, mahogany,
white pine 97.19.2





The Garven Carver,
Dressing Table,
Philadelphia, 1760-1780,
mahogany, white pine and
brass 31.21

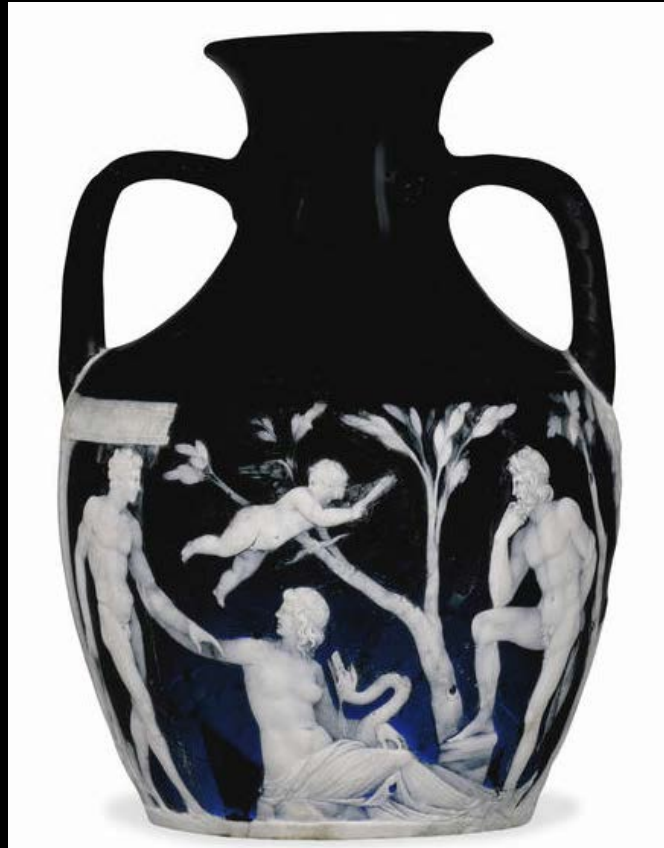
Charleston Drawing Room, Charleston, South Carolina, 1772 27.78



Robert and James Adam,
Details of Derby House in
Grosvenor Square, published
1777.



Portland Vase, Rome 5-25 CE, cameo glass,
The British Museum



Wedgwood, Portland Vase,



Wedgwood Cup with Saucer, English, Lady Templeton Design, 1780, jasper ware
92.70a,b



North American Federal Style

Charleston Dining Room, Charleston S.C., 1772 27.79





Sideboard, American, Hepplewhite style, about 1790, mahogany, satinwood 31.29.1,2



Federal Side Chair, Sheraton style,
mahogany, 31.15.2

Sheraton



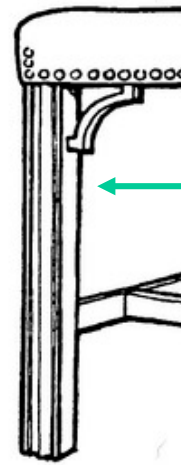
Hepplewhite side chair, c.
1795, Stephen Badlam,
mahogany, 83.78.2



William and Mary

Queen Anne, Early Georgian/Chippendale

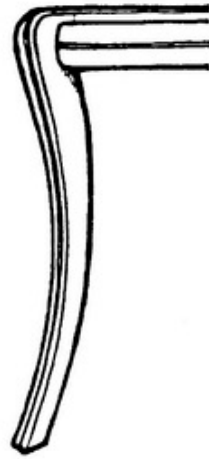
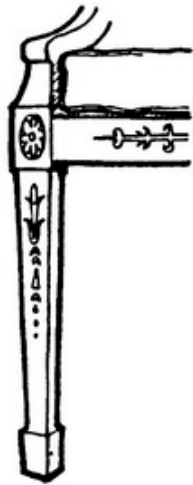
Mid-Georgian/Chippendale



Legs: Turned

Cabriole

Moulded



Tapered

Sabre

Turned and Fluted

Late Georgian/Federal (Adam, Hepplewhite, Sheraton)

Hepplewhite, Card table, c. 1780,
Mahogany, white oak, and pine, 31.17.8



Sheraton, Card Table, 1790,
mahogany and satinwood, 24.55





Hepplewhite



Sheraton





Pembroke Table,
Hartford, Connecticut,
about 1790, cherry,
inlays, brass fittings
92.30

Paul Revere II, Tea Service, American (Boston, Massachusetts), silver and wood, 1792-93
60.22.1

