

## Participatory Experience Directions: (paintings in Gallery 367)

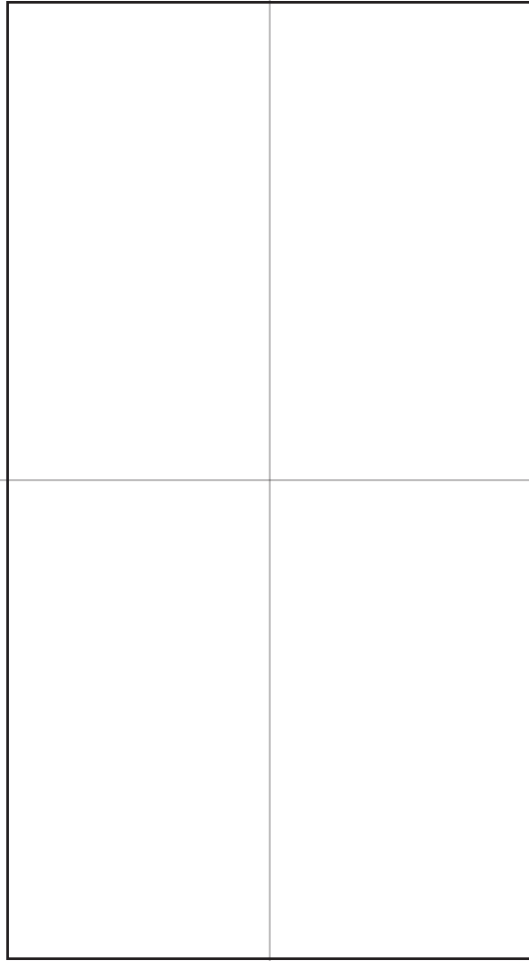
**Objective:** Discover how lines define shapes and how both play a major role in compositions.

**Exercise:** Draw the shapes you see in the two compositions shown below. Place your sketch in the frames provided. Keep in mind line sensitivity as you draw thick and thin lines through touch to create the shapes. Filling in shapes is encouraged but not necessary.

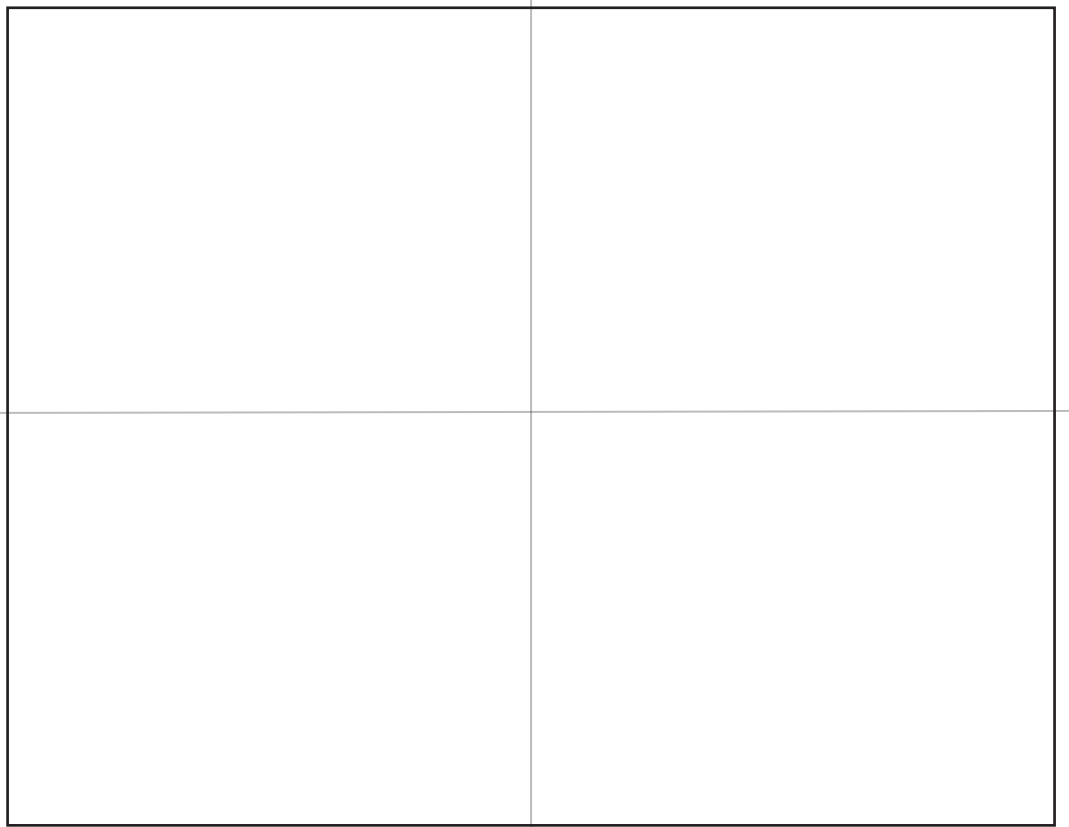
**Tools:** Pencil and paper. **Getting started:** In order to transfer your composition, see gray guides that half the frames below. Then, in your mind's eye, divide the real paintings in half horizontally and vertically. (Note the frames are different sizes so be sure you are using the right frame for the right painting.)

Exploring  
**Line and Shape**  
two design elements in a composition

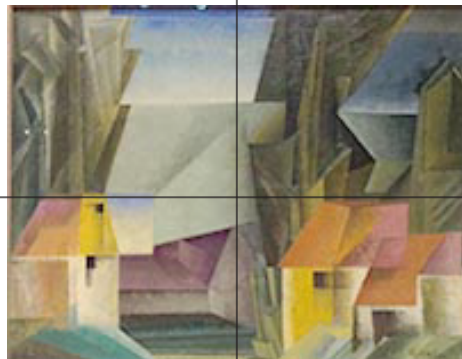
1



2



**Little Servant Girl, 1916**  
**Amedeo Modigliani, Italian**  
**Oil on canvas**  
59.30



**Hapfgasten, 1920**  
**Lyonel Feininger, American**  
**Oil on canvas**  
55.2