



Mary Cassatt, *The Barefooted Child*, 1896-97, drypoint and aquatint

Japonisme



Chinese Ewer (Ming dynasty), ca. 1520
Made of Portuguese Market



Chinese taperstick, ca. 1700-1710,
Made for Dutch market
Hard paste porcelain



Vase
Chinese porcelain, ca. 1740
French gilt-bronze mounts, ca. 1750



Staffordshire (England) Teapot,
Stoneware, c. 1740
MIA



Paul de Lamerie (English)
Tea caddy, 1747
Silver-gilt

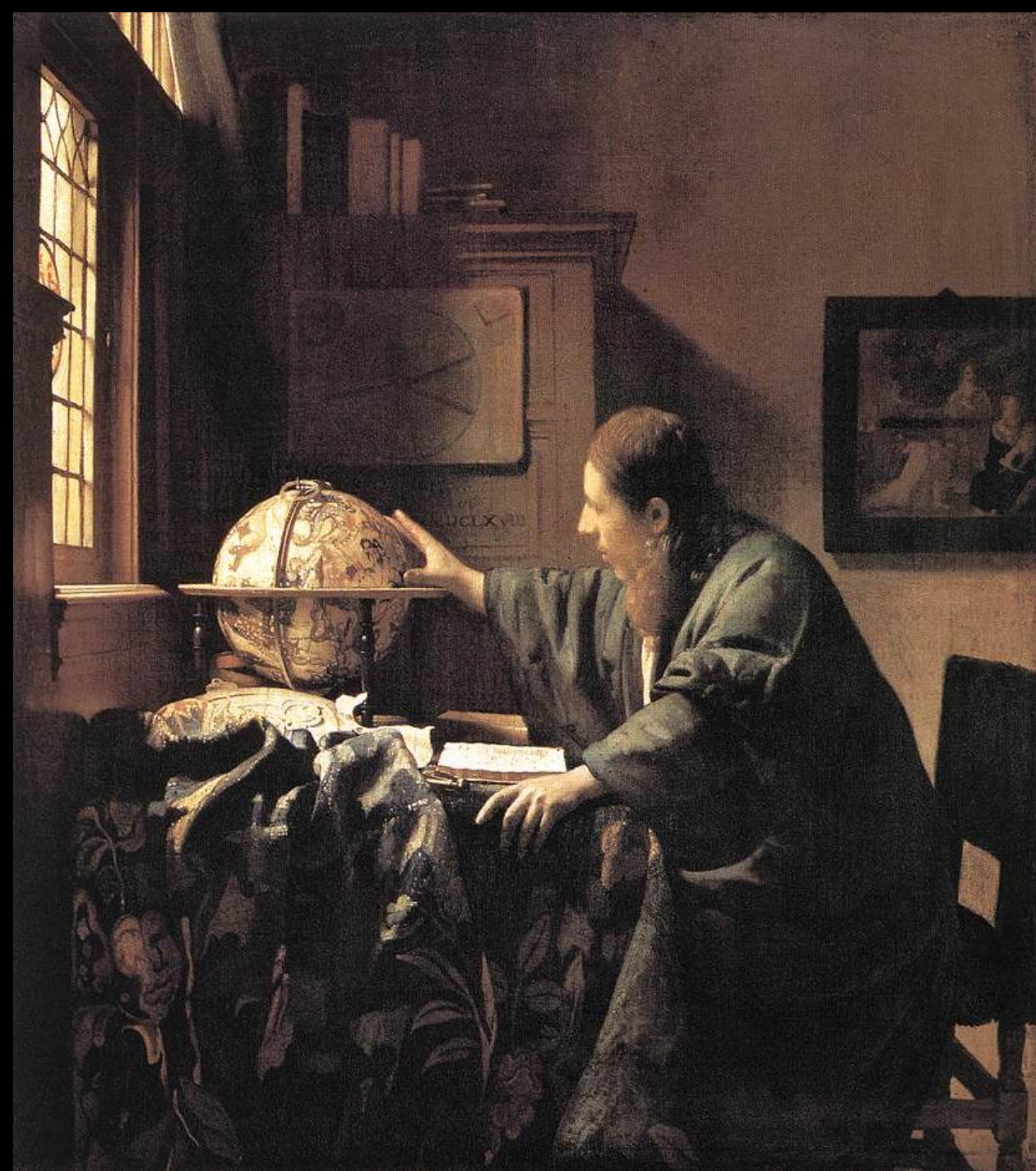


W. H. Stiles del.

View of the Golden Pagoda



Tea house, Sanssouci, Potsdam (Germany), 1755-64



Vermeer, *The Astronomer*,
1668, Louvre



Hokusai (1760-1849), *Great Wave off Kanagawa*, 1829-33,
From *Thirty-six views of Mount Fuji*, color woodblock print



Hiroshige, *Kinryusan Temple at Asakusa*:
From the series *One Hundred Famous Views
of Edo*, 1856, color woodblock print



Kitagawa Utamaro,
*Courtesan Hitomoto of the Daimonjiya
House*, 1801-2, color woodblock print
Mia, 74.1.154



月雪巻
本仲四郎
作幸の内
中村芝翫

Toyokuni II Utagawa, *The Actor Nakamura Shikan as the Bamboo Cutter of the Play "Getsu-setsu-ka Tori?? no seki"*, 1826-35, color woodblock print

豊三國重

交



Manet, *Portrait of Emile Zola*,
ca. 1868, oil on canvas,
Musee d'Orsay, Paris



Vincent Van Gogh, *Self-Portrait
With Bandaged Ear*, 1889
Oil on canvas
Courtauld Institute Galleries,
London



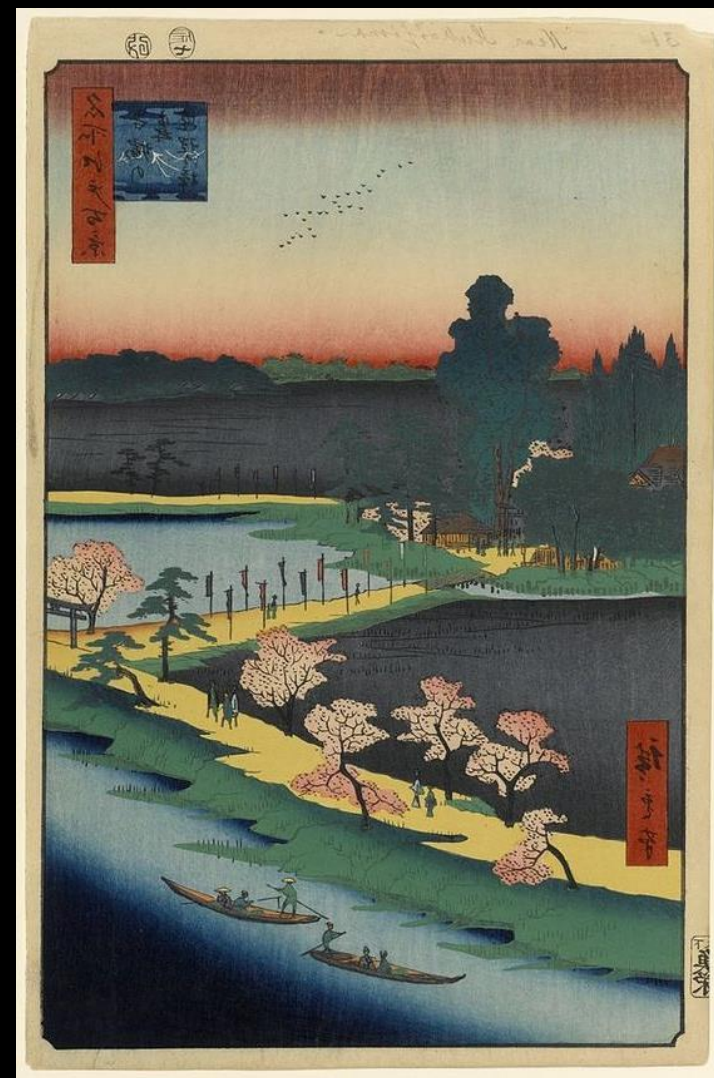
Hiroshige, *Flowering Plum Tree in the Kameido garden*, 1856-58, color woodblock print



Vincent van Gogh, *Japonaiserie: tree in blossom*, 1886-88
Oil on canvas, Van Gogh Museum, Amsterdam



Edgar Degas (French, 1834-1917)
A Winding River, c. 1890
Oil monotype overworked in pastel
The John R. Van Derlip Trust Fund 2009.19.1



Utagawa Hiroshige
Asuma Shrine and the Entwined Camphor
1857, color woodcut
in reverse

Mary Cassatt (1844-1926)



Mary Cassatt

Mary Cassatt, *In the Opera Box*,
c. 1880, soft-ground etching,
Aquatint and drypoint



*Infant portrait in blue
Mary Cassatt
(1891)*

Mary Cassatt, *The Bath*, c. 1891, drypoint and color aquatint



Utamaro, *Mother bathing her son*, c. 1794
Color woodblock print



Kitagawa Utamaro (1753–1806)
*Midnight: The Hours of the Rat; Mother
and Sleepy Child*, from the series *Women's
Daily Customs*, Edo period (1615–1868),
ca. 1790, color woodblock print



É. S. / n. 10. De 25 exemplaires. Les formes par l'artiste et M. L. L. L.
Mary Cassatt

Mary Cassatt
Maternal Caress, 1891
Drypoint, soft-ground etching and
Aquatint, print in color
From series of 10



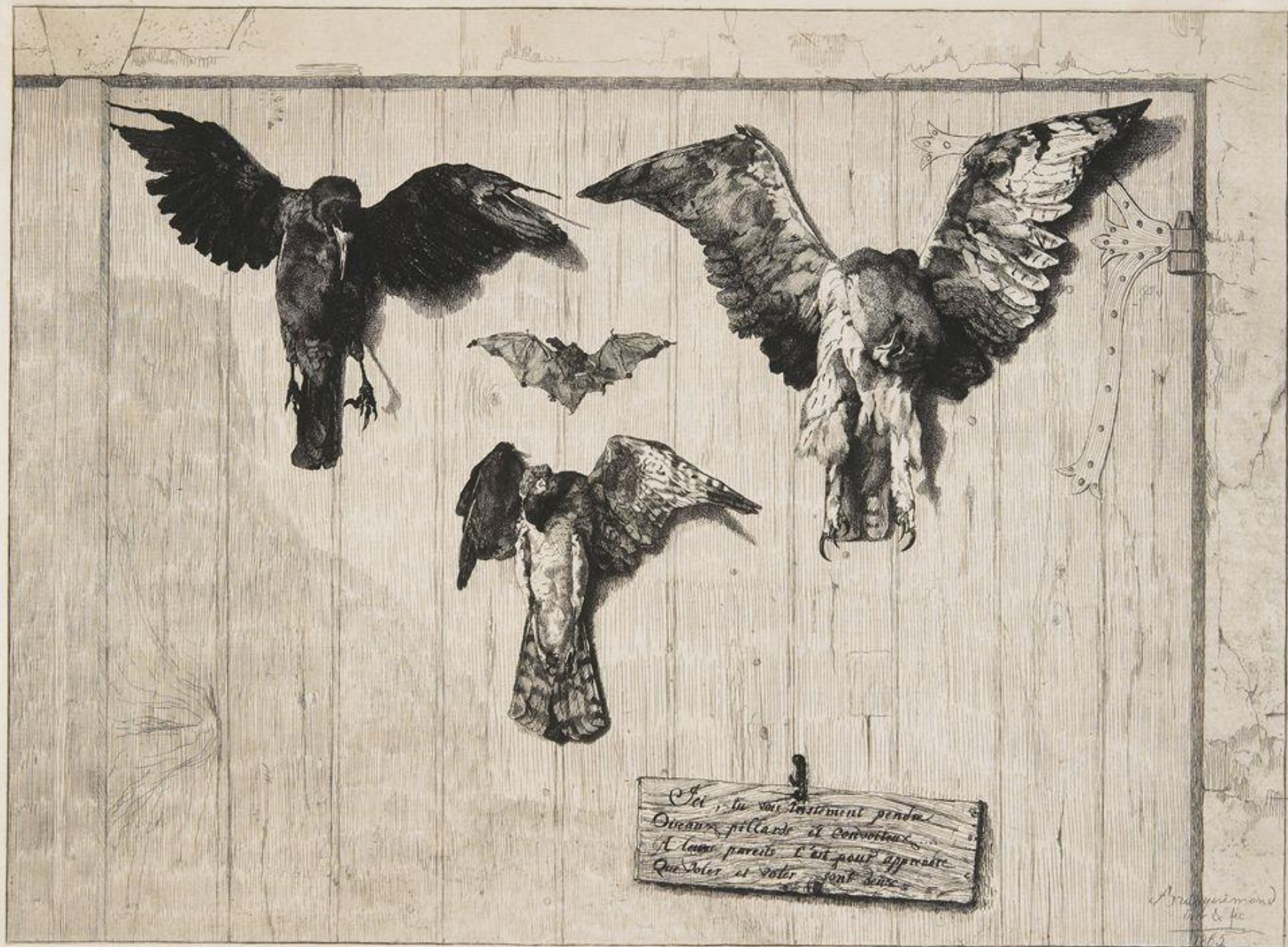
Mary Cassatt, *The Barefooted Child*, 1896-97, drypoint and aquatint



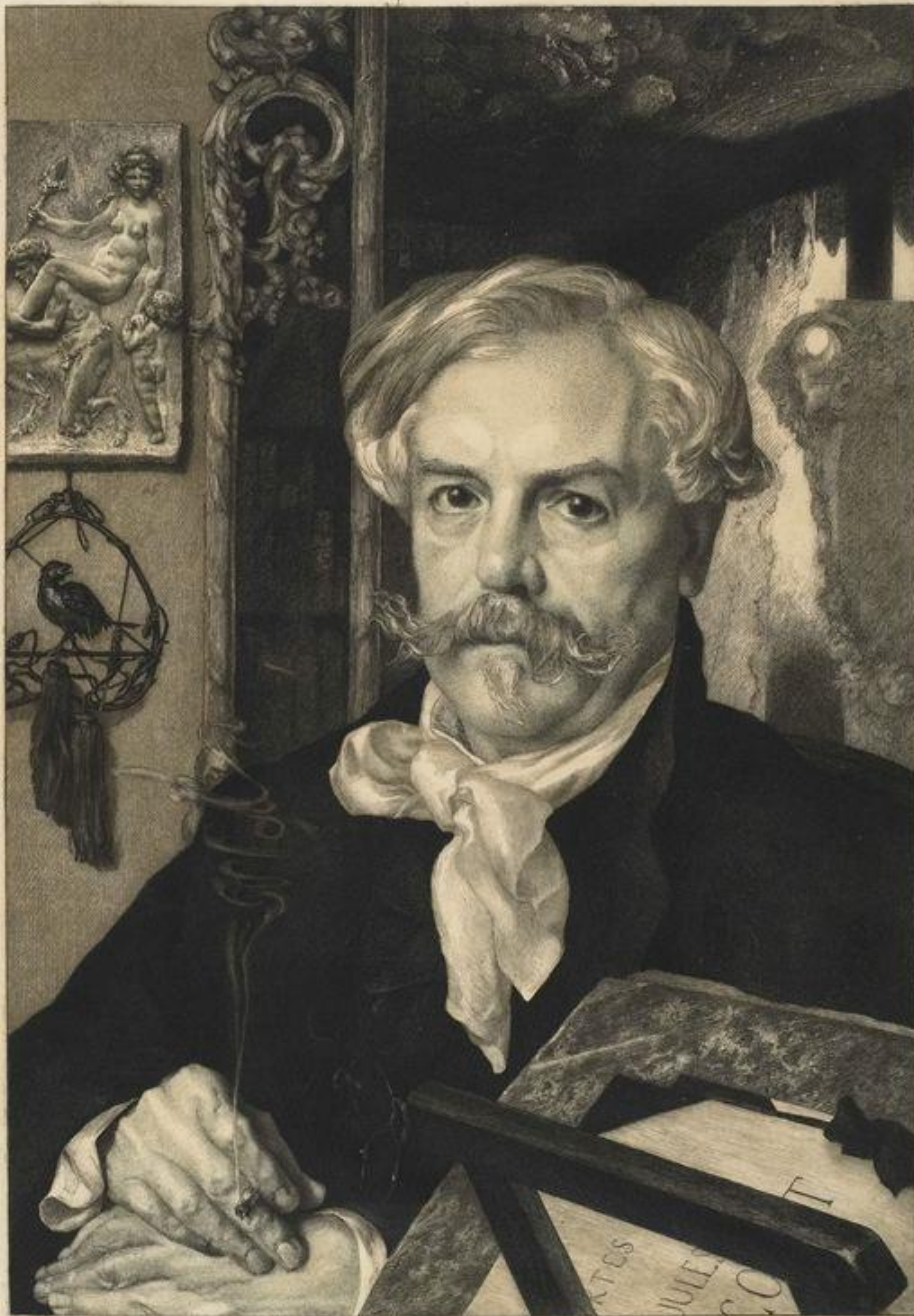
Henri Rivière, *Construction of the Base of the Eiffel Tower*, 1888-1902, color lithograph from *The 36 Views of the Eiffel Tower*, (Printer/Publisher: Eugène Verneau, Paris, 1902)



Henri Rivière, One of The 36 Views of the Eiffel Tower, 1888-1902, color lithograph



Félix Bracquemond (1833–1914), *The Top of the Door*, 1852, Etching

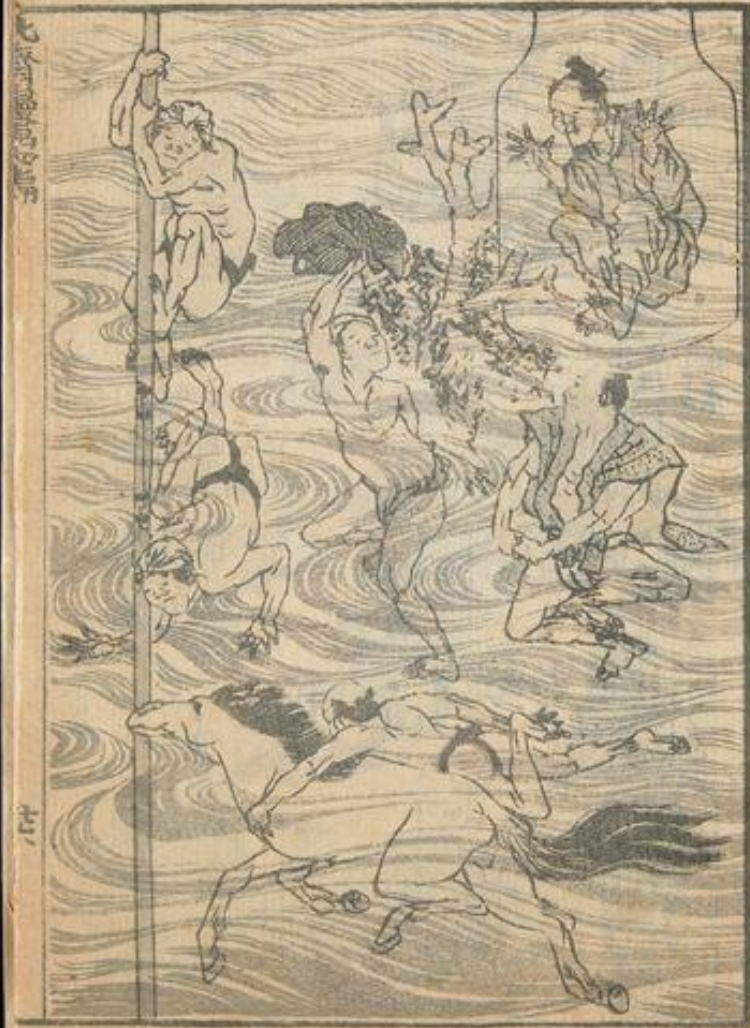


Félix Bracquemond (1833–1914)
Edmond de Goncourt (1822–1896), 1882
Etching and drypoint





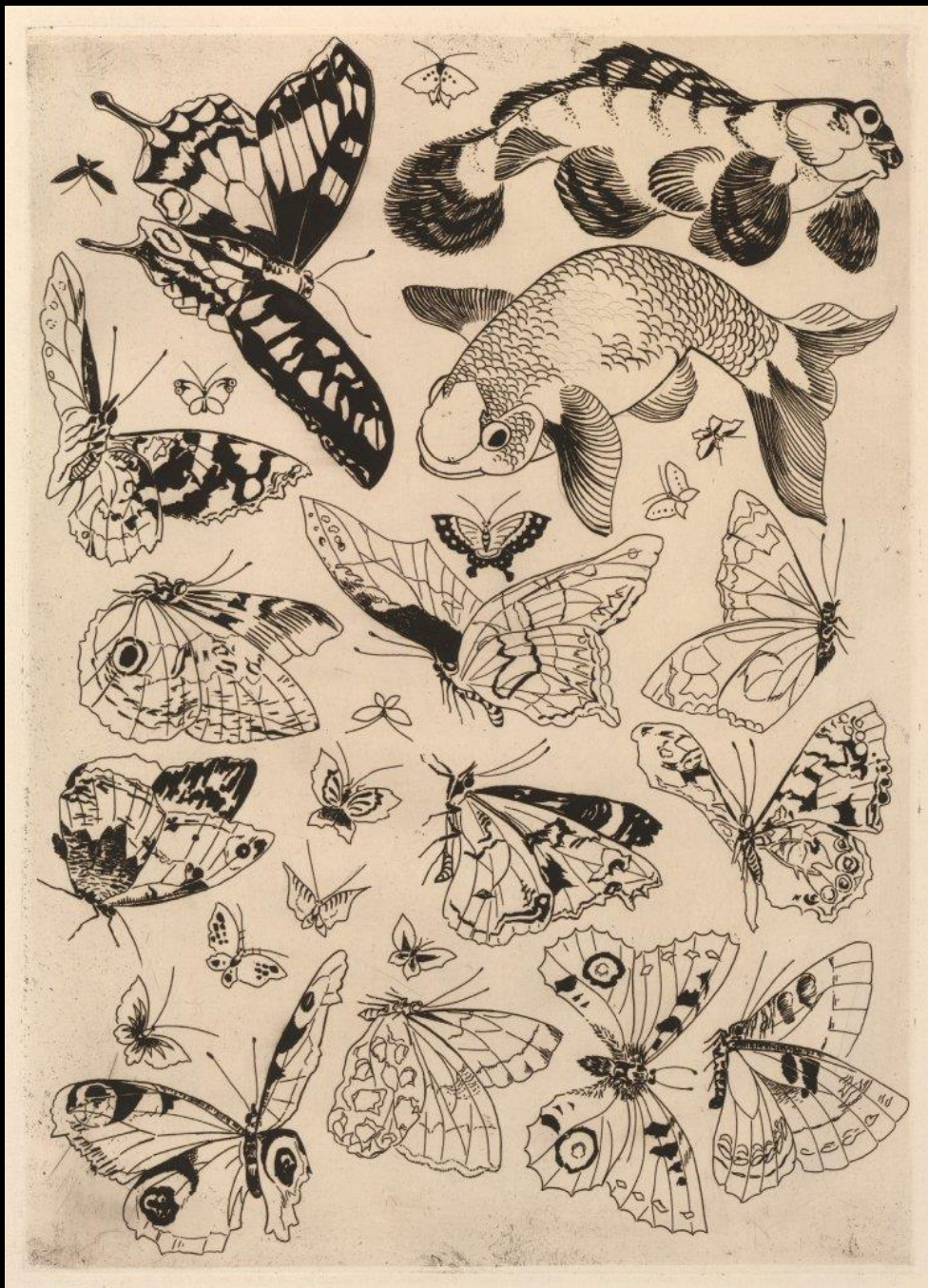
Félix Bracquemond (1833–1914)
The Gallic Cock--Long Live the Czar!,
1893
Etching and drypoint



Hokusai, *Random Sketches of Hokusai IV*, 1816, color woodblock print (sumi and light color)



KATSUSHIKA HOKUSAI: Page from the
Manga, c. 1812
Wood engraving



FÉLIX BRACQUEMOND

Papillons et poissons

Service de table de la maison Rousseau

1866, etching

British Museum, London



FÉLIX BRACQUEMOND: Plates from the Rousseau Ceramic Service, 1866



KATSUSHIKA HOKUSAI: Page from the
Manga, c. 1812
Wood engraving



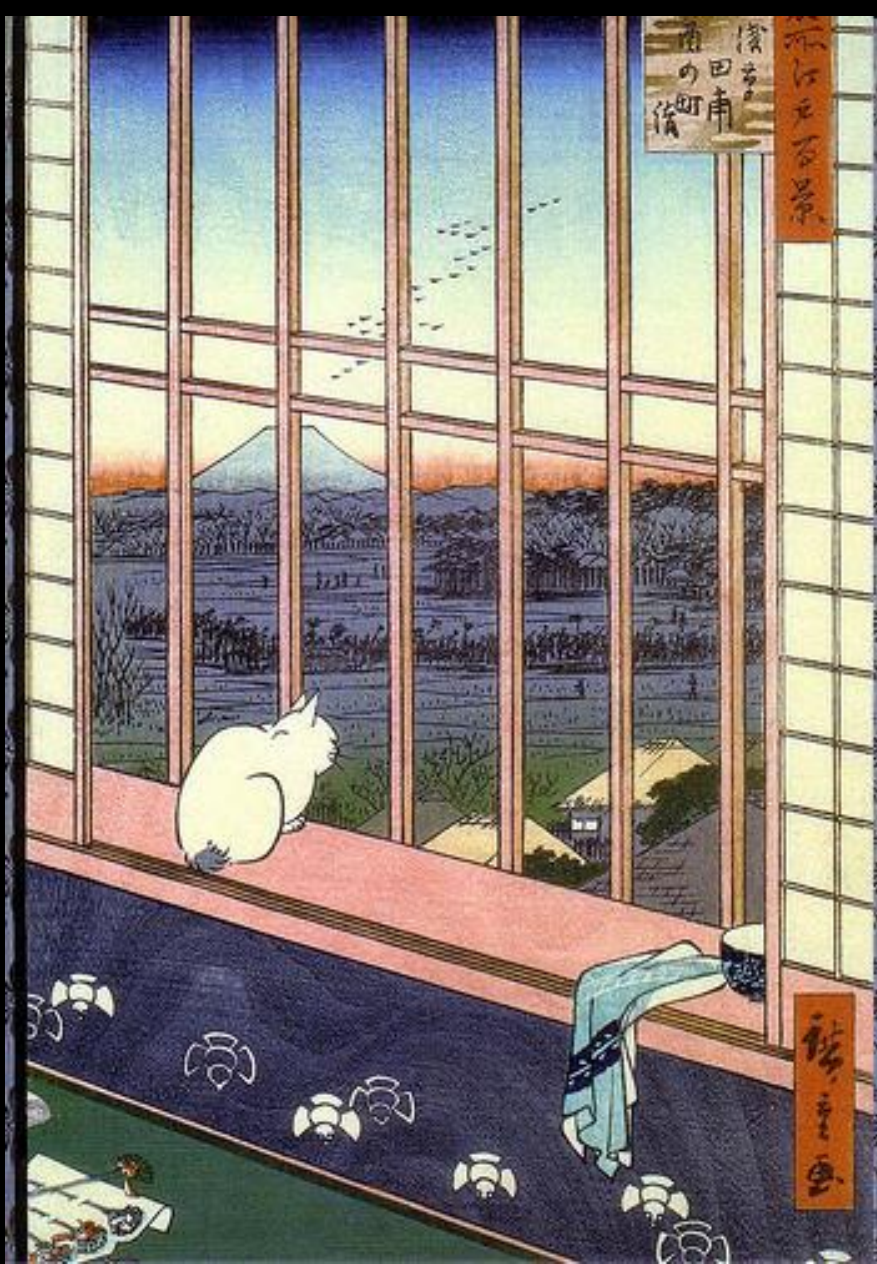
FÉLIX BRACQUEMOND, *Coqs et canards*, *Service de table de la maison Rousseau*, 1866, etching
British Museum



FÉLIX BRACQUEMOND: Plate
from the Rousseau Ceramic
Service, 1866



Felix Buhot (1847-1893)
Crapaud Bronze, 1883
Etching and aquatint



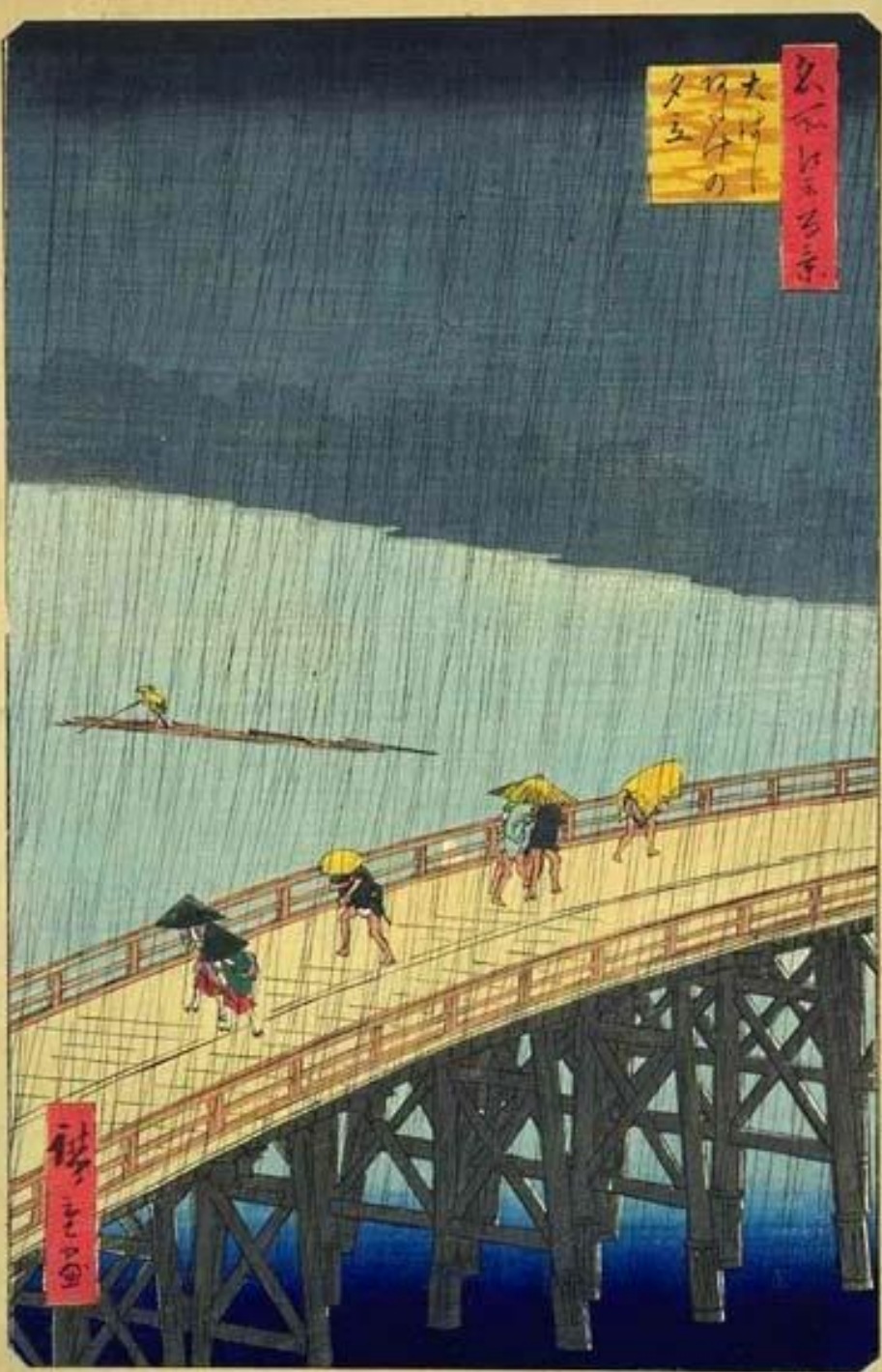
Hiroshige, *Returning from the Festival of Asakusa*, from 100 Views of Edo, 1856-59



Utagawa Kuniyoshi (1798-1861)
Cats in Various Attitudes, 1852



EDOUARD MANET
The Cats' Rendezvous, 1868
Lithograph



Hiroshige Utagawa
*Distant View of Atake in Evening Shower
Over the Ohashi Bridge, July 1857*
Color woodblock print



Camille Pissarro (French, 1830–1903), *Effects of Rain*, 1879
Etching, aquatint and drypoint, six state of six

Edgar Degas (1834-1917)



Hokusai, *Sparrow fance*, from *Manga*, color woodblock print



Hokusai, *Random Sketches by Hokusai I*, 1814, color woodblock print



Degas, *Leaving the Bath*, 1879-80, drypoint and aquatint



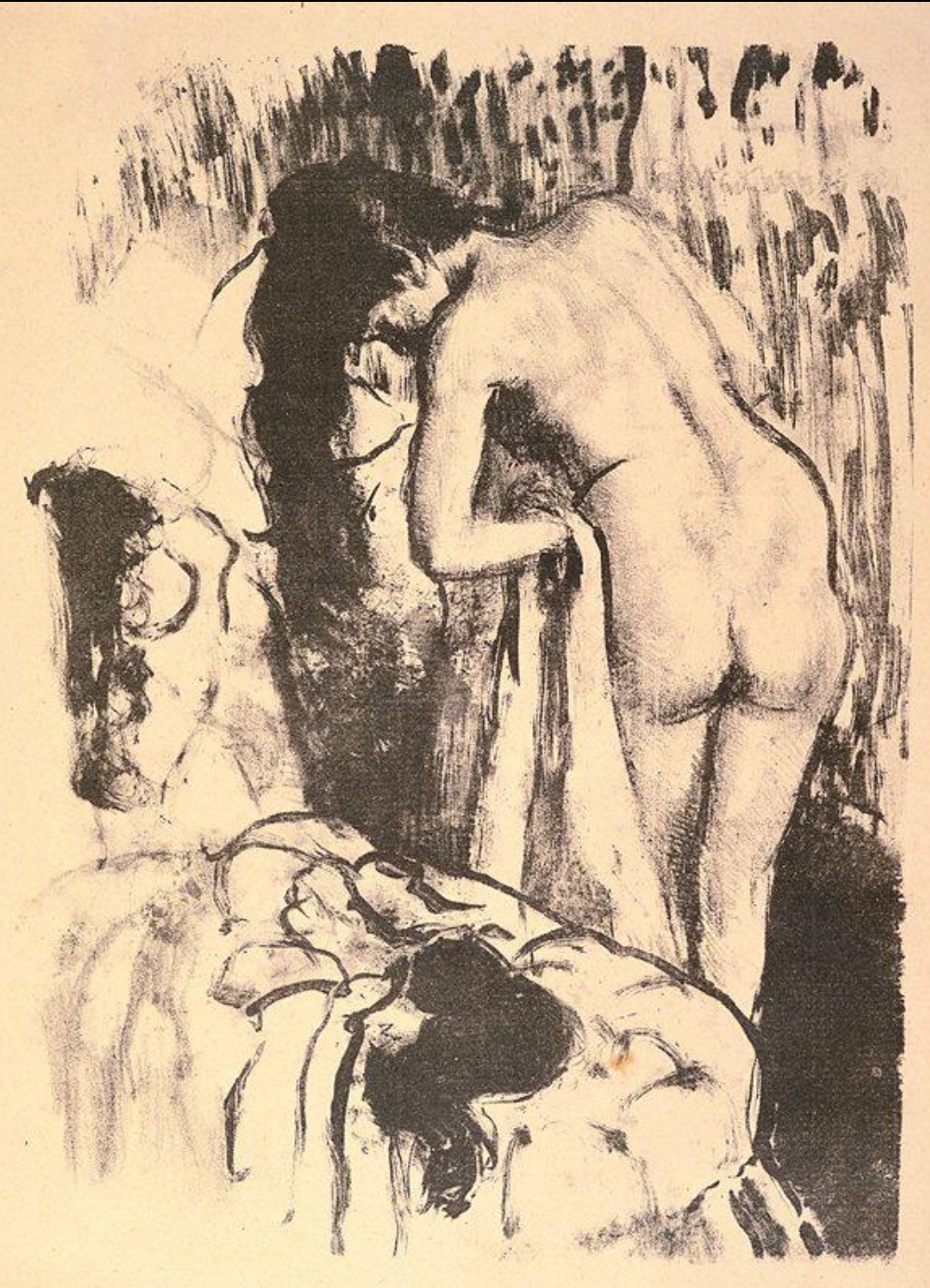
Kitagawa Utamaro (1753-1806)



Edgar Degas,

Woman Bathing in a Shallow Tub, 1885

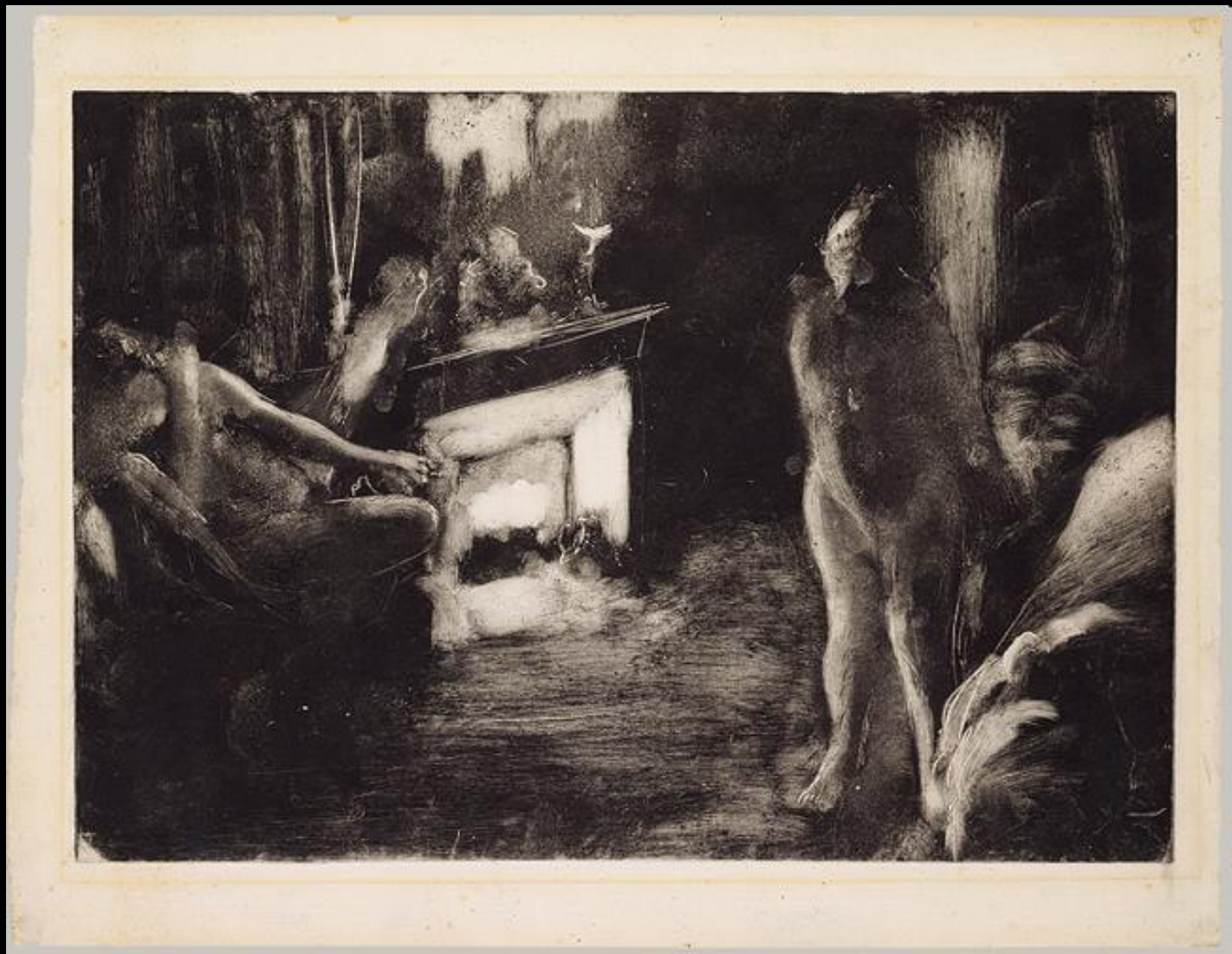
Charcoal and pastel on light green wove paper,
(now discolored gray), laid down on silk bolting,
32 x 22 1/8 in, Metropolitan Museum, NY



EDGAR DEGAS

*Nude Woman Drying Herself, Turned to
the Left, c. 1890s*

Lithograph



Edgar Degas (French, 1834–1917), *The Fireside*, ca. 1876–77
Monotype in black ink; 16 3/4 x 23 1/16 in., Metropolitan Museum, New York

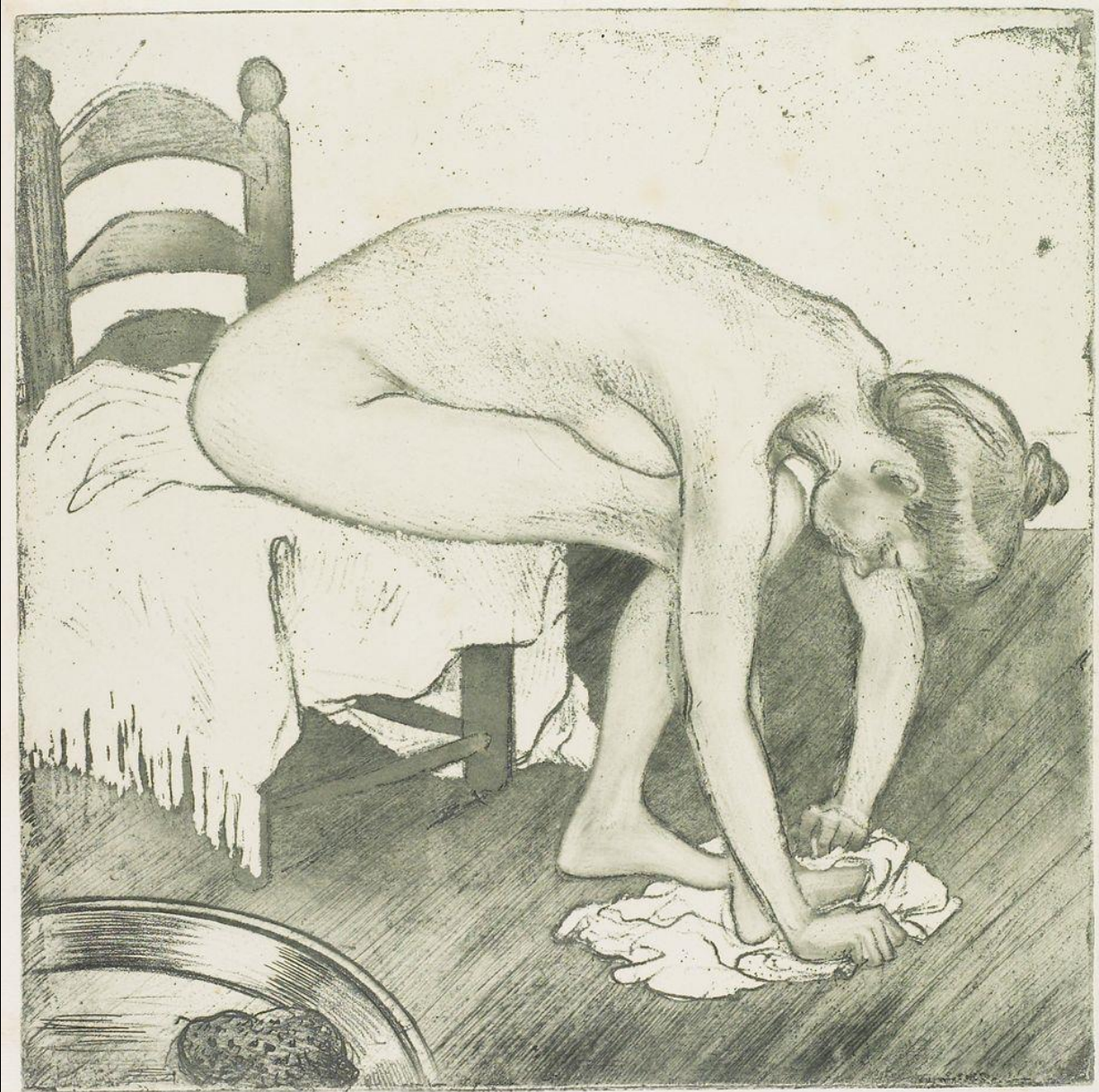


Henri de Toulouse-Lautrec, *Woman at the Tub*, 1896, color lithograph



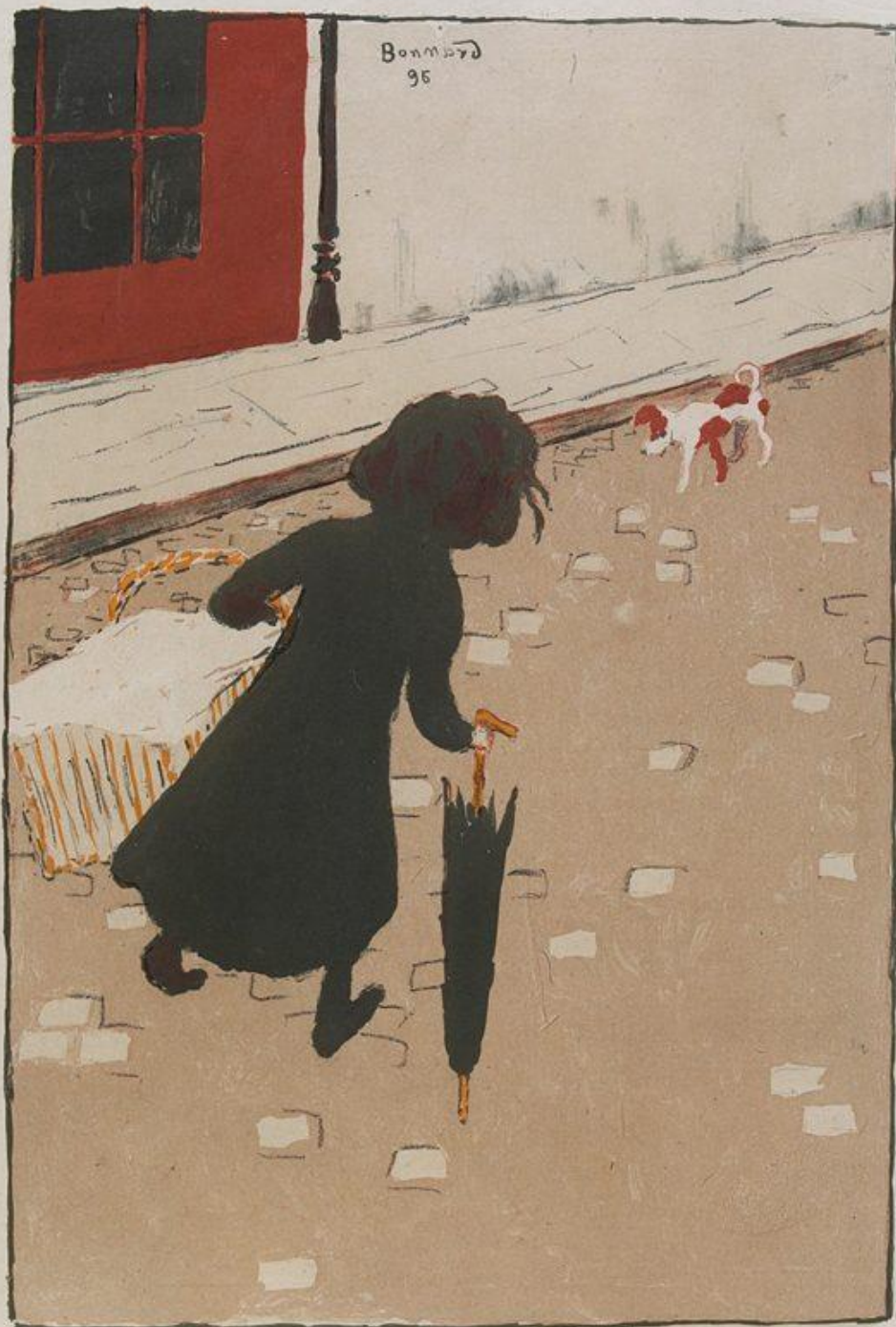
Adolphe Marie Timothee Beaufrère
French, 1876 – 1960
La toilette, 1906
Color woodcut





à Eug Delâtre
Steinlen

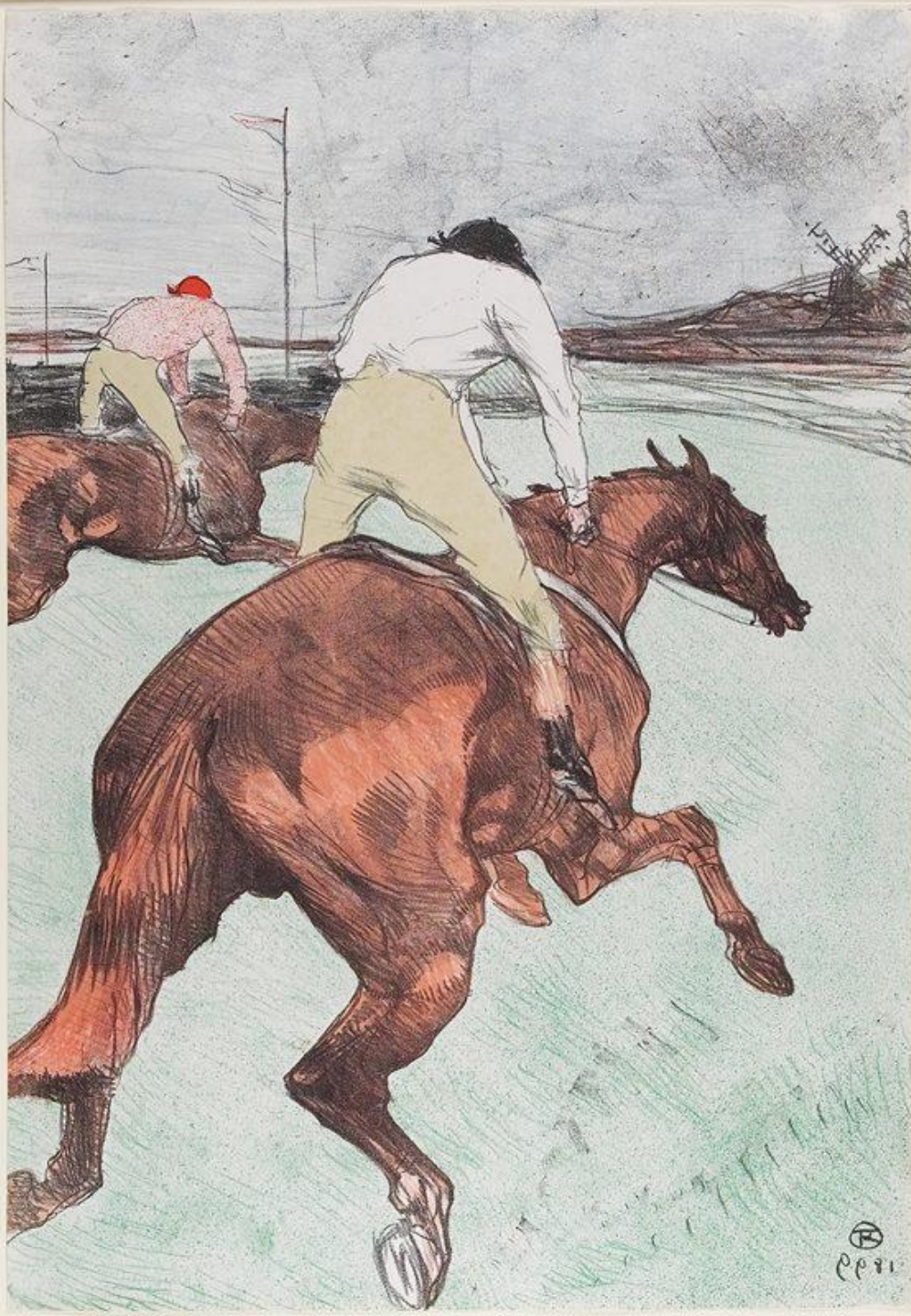
Théophile-Alexandre Steinlen , *Woman Bathing Her Feet*, 1902, etching and aquatint, 1st state of 2



Pierre Bonnard
(French, 1867–1947)
The Little Laundress, 1896
Color lithograph
Printed by Auguste Clot
(French, 1858–1936)
Published by Ambroise Vollard



Pierre Bonnard (French, 1867–1947), *Child in Lamplight*, c. 1897
Color lithograph on Japan paper, Printed by Auguste Clot (French, 1858–1936)
Bequest of Dorothy Millett Lindeke P.84.22



Henri de Toulouse-Lautrec
(French, 1864–1901)

Le jockey, 1899

Color lithograph

Publisher: Pierrefort, Paris

Printer: Henry Stern

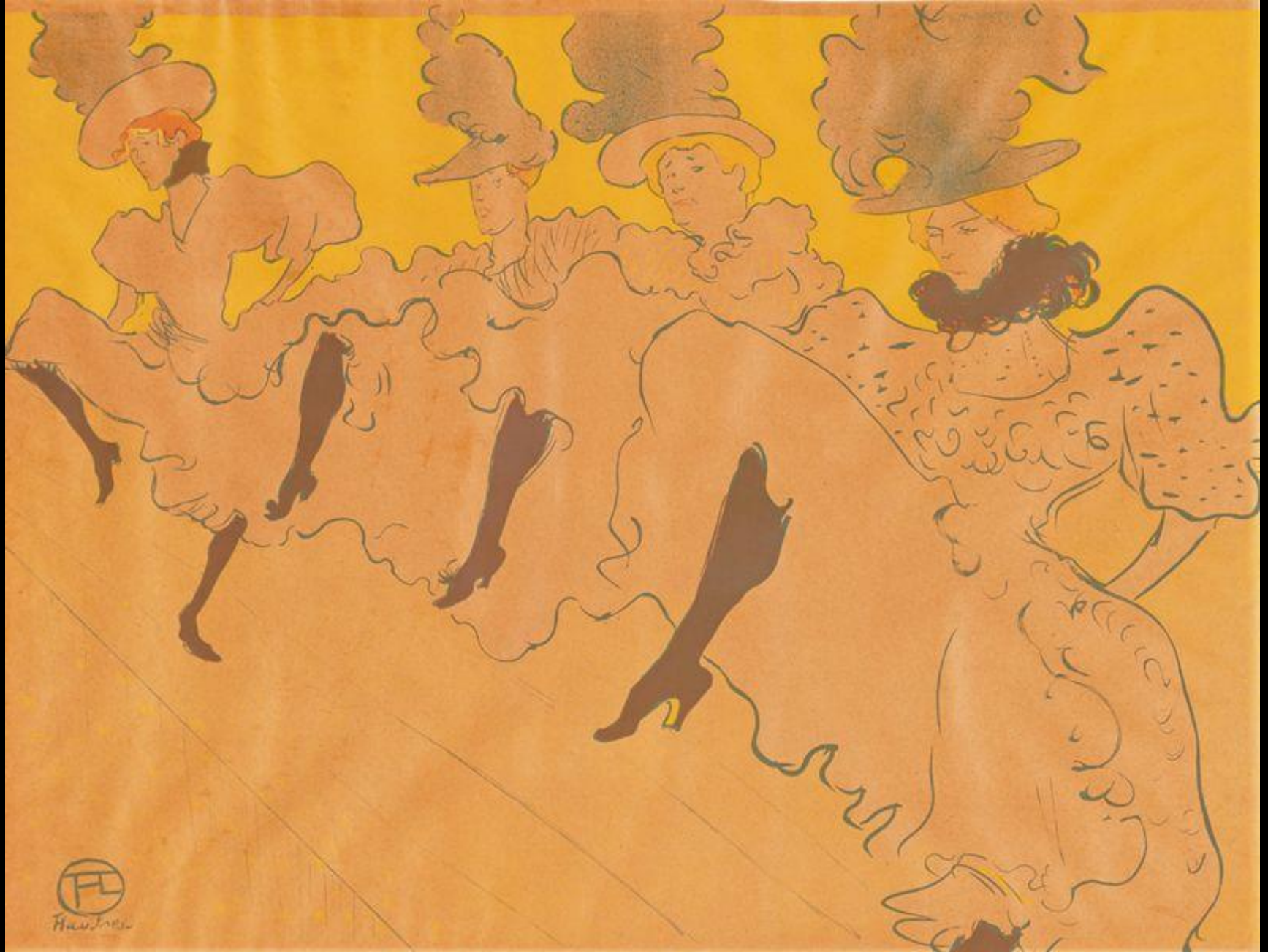


Boyhood: John Singer Sargent's "Birthday Boy"

Etchings by Albert Besnard, on view in G353, January 14-October 8, 2017



Toulouse-Lautrec
The Englishman at the Moulin Rouge,
1892, color lithograph



Henri de Toulouse-Lautrec (1851-1925)

La Troupe de Mademoiselle Eglantine, 1896, color lithograph poster



Kitagawa Utamaro, *Kitchen Scene*, ca. 1794-95, color woodblock print



Divan Japonais

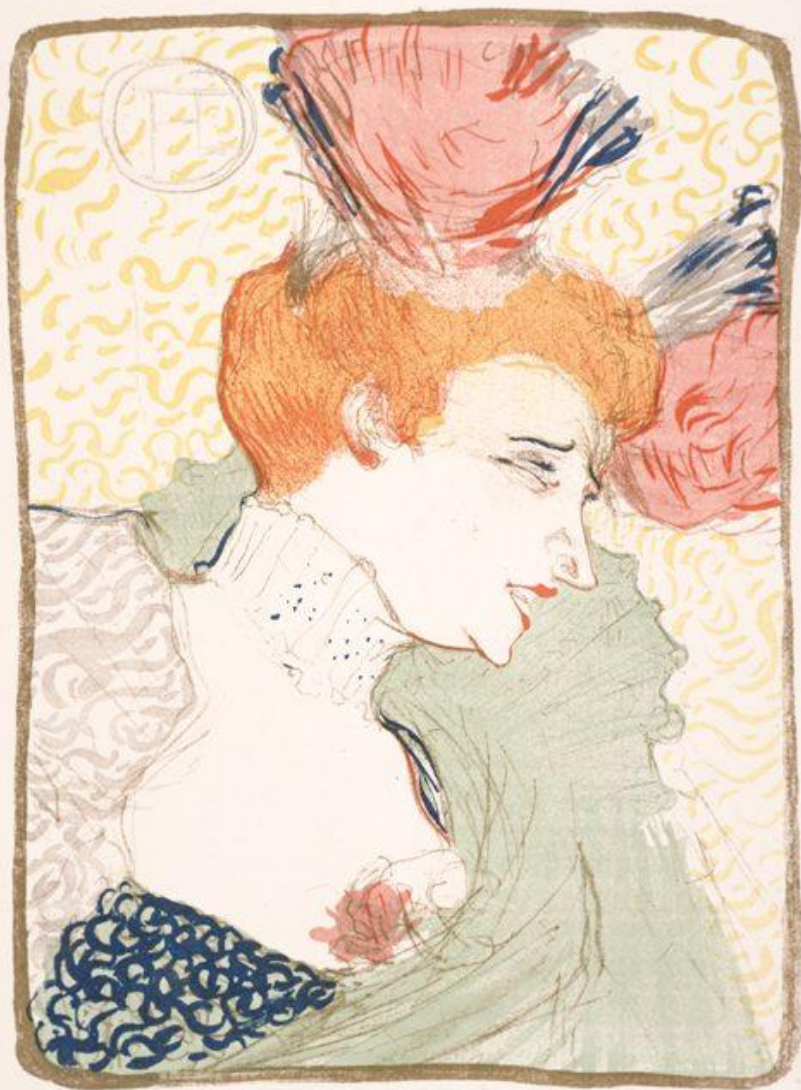
75 rue des Martyrs



Ed Fournier
directeur

Hautec





© 1917



海國義人合

新唐書

家
凡
袖
浦
氷
水
大
親

Utamaro. Courtesan



Toulouse-Lautrec (1864-1901)
Aristide Bruant in his cabaret, 1893
Color lithograph poster



Toulouse-Lautrec

*Ambassadeurs: Aristide Bruant
dans son cabaret, 1892*

Color lithograph poster



Toyokuni II Utagawa, *The Actor Nakamura Shikan as the Bamboo Cutter of the Play "Getsu-setsu-ka Tori?? no seki"*, 1826-35, color woodblock print



秀章圖



JAMES McNEILL WHISTLER, *Old Putney Bridge*, 1879, etching



JAMES McNEILL WHISTLER: Old Battersea Bridge, 1879
Etching



Hiroshige, Okazaki--Yahagi Bridge , 1832-35, color woodblock print



Hiroshige Utagawa

Eikichi Uoya

Iris Garden at Horikiri, May 1857,

Color woodblock