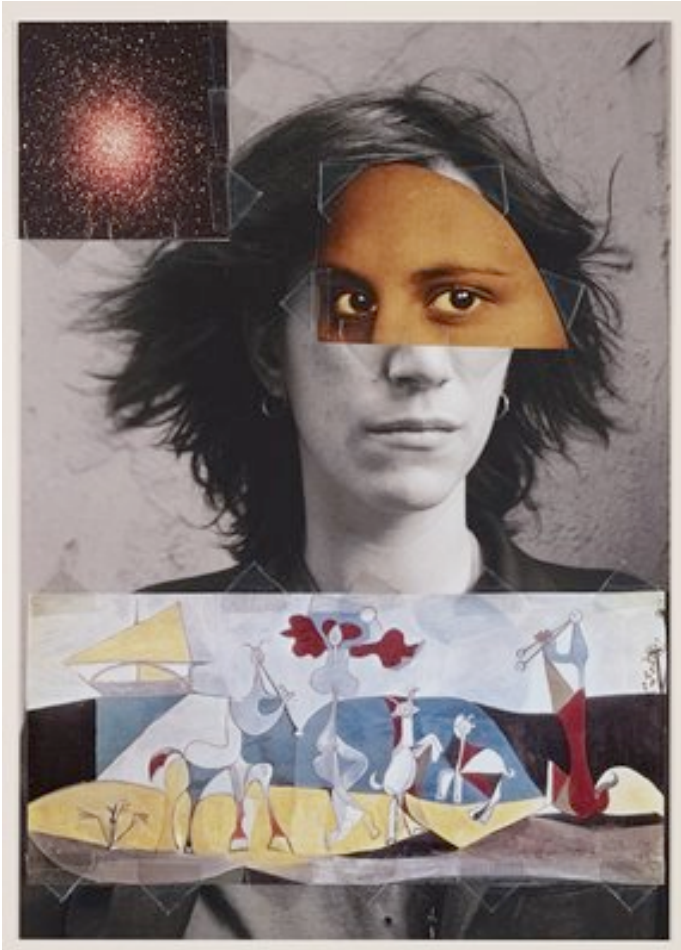


1



Frank Big Bear, *Untitled (Patti Smith)* Gallery 261a

Look closely at the separate collages created with postcards of musician and artist Patti Smith, the Godmother of Punk, and easily recognizable iconic images. What images can you recognize?

Look for unifying elements among the images. What common themes can you find?

Big Bear is exploring his own Native American identity. What do you think this collage says about his experiences as an Ojibwe?

This mosaic-like collage is a visual encyclopedia using Patti Smith's photograph to bind it all together. Using clues from this collage, what would Big Bear say binds diverse people together?

2



Tom Hammick, *Tank* Gallery 255

What words would you use to describe this landscape?

Look closely at the colors. The artist applies as many as 30 layers of color, lightest to darkest, using the same woodblock. He carves away more wood for each layer. See how many colors you can find along the horizon line.

Hammick questions the meaning of progress: "...on a daily basis I feel, we all feel, the joy we find in life is being outsized by a feeling of growing dread and doom, as we strip our beautiful planet of its diversity and sustainability. Species by species, concreted acre by acre." How does Hammick express his ideas in this woodcut?

Pose in front of the woodcut like the figure in the picture. Notice how you become part of the scene. If you could change anything in this scene, what would it be?

3



Suzuki Goro, *Yahichida Chair* Gallery 239

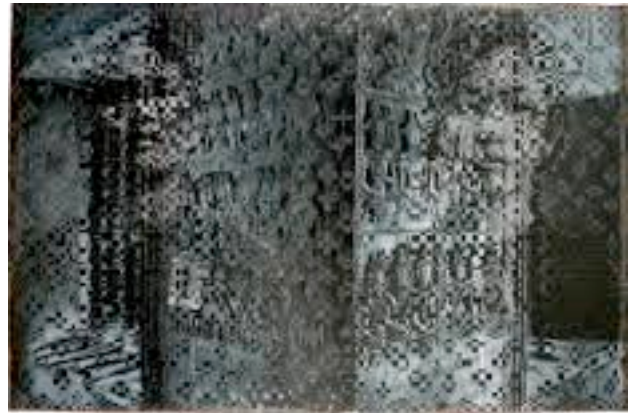
Suzuki uses a traditional pottery technique called Yahichida Oribe in new ways. The spontaneity of the dripping glaze and the playfulness of the hand-painted images are reminiscent of a child's coloring book. He began working with clay as a teenager and is now one of the most celebrated artists in Japan.

Name the parts of a chair. Walk around this ceramic and describe what you see. How does the artist show his sense of humor?

What cycles are referenced in this piece?

How do you think the pendant light relates to the chair?

4



Dinh Q Le, *Untitled (Two figures)* Gallery 213

Walk up to this object and take a close look at how it is made and what it is made of. Then step back and look at the images. What did you discover?

Photographs are records in time and place. Read the panel beside the image. How does this information give new meaning to this piece?

Like many contemporary artists, Le uses a traditional art technique, weaving, with new materials in a new way. What, besides these pictures, has been woven together?

The temple Angkor Wat is a powerful symbol of Cambodia, and is a source of great national pride. Le chose a photograph of Angkor Wat with an unusual angle. How does that affect this piece?

NOTE: During the Kmer Rouge reign from 1975-79, 2 million people were killed or died.

**Staircase to third floor:
In Gallery 340**

5



Aaron Spangler, *Songbird* Gallery 330

Spangler is an internationally known artist who uses traditional wood carving techniques to create his sculptures. Spangler and his wife Amy Thielen moved from NYC to Park Rapids, MN, where they lived a simple life without the amenities we take for granted. No running water. No electricity. Growing their own food, cooking over a wood stove. Amy started her cooking career on that stove. Stayed. Had a child and added onto the cabin, put in running water and electricity :) Meanwhile, Amy blogged her way to becoming a celebrity chef.

Walk around the sculpture. What images can you find that reflect life “up north” in Minnesota?

How does Spangler suggest that the natural world is colliding with our changing world?

How do you think the title *Songbird* represents this sculpture?

If you were to create a song for this sculpture, what sounds, instruments, rhythms would you use?

6



Georges Jeanclos, *Sleepers* Gallery 362

Walk around the sculpture. What is going on in this scene? What do you see that makes you think that?

Read the panels on the wall. What did you find out about Jeanclos’ life that helps you understand this sculpture?

What do you see in *Sleepers* that shows the frailty of life?

Think of the multiple meanings of the word *sleepers*. What do you think the title *Sleepers* might suggest?

NOTE: Today sixty-five million people have fled their homes because of famine, war, or disasters.

7



Viola Frey, *Woman and Small World* Gallery 373

Frey is known for her giant ceramics. Walk around her sculpture. What similarities do you find between the “small world” and the “woman”?

Dave Muller, a contemporary artist, created this space with Mia art and called it *Place*. Think of the entire gallery as ONE piece of art. What connections can you make between Frey’s sculpture in the midst of it all and other objects?

Look around this gallery. What common themes can you find that link all of these art works?

If you were to add a film or song or iconic photograph to this gallery, what would you choose? How would it fit in?

NOTE: Some of the framed art work and the murals are Dave Muller’s artwork. His signature is the palette of colors he uses for each piece.

8



Aaron Spangler, *Separatist* Gallery 380

Look closely at this woodcut. What images can you find that reflect life “up north” in Minnesota?

How does Spangler create a sense that these people and things are inseparable?

Spangler and his wife were once newcomers to Park Rapids, MN. How does Spangler illustrate the struggles newcomers have belonging to their new hometown?

Why do you think the two people at top are looking outward and reaching upward?

What might your song *Brothers and Sisters* have in common with this woodcut?