

## Key Ideas

- Contemporary Art engages the viewer in sometimes unexpected ways, through the presentation of the work, unique materials or forms, and surprising contexts. At times, viewers are part of the artwork, through their engagement with or reactions to it.
- “Contemporary artists continue to use a varied vocabulary of abstract and representational forms to convey their ideas. It is important to remember that the art of our time did not develop in a vacuum; rather, it reflects the social and political concerns of its cultural context.” (<https://www.khanacademy.org/humanities/art-1010/beginners-guide-20-21/a/contemporary-art-an-introduction>)
- Contemporary art explores issues of race, gender, sexuality, technology, new media, world culture, self and cultural identity, and the legacy of history.

Mark Dion, *Curator's Office*, 2012-2013, 2013.17

Contemporary Art

<https://vimeo.com/album/2799770/video/87685777>





<https://art21.org/watch/exclusive/mark-dion-methodology-short/>

# What is "truth" in a period room?

"Truthiness": fabricated truths, without regard to fact or logic...highlights unstable relationship between fact and fiction in the 21<sup>st</sup> century!



Vik Muniz, *Verso*  
(*Rembrandt, Lucretia*), 2012,  
2012.76A-C

## Contemporary Art



Is this a type of  
“appropriation”  
by Muniz?







## Contemporary Art: Video/Film

Bill Viola, *Three Women*, 2008, 2010.97

Performed by Anika Ballent, Cornelia Ballent, and Helena Ballent

- What ideas/concepts does this video convey? (Consider the lighting and subject matter.)
- Why film in slow motion?
- Why film in silence?

<https://www.nytimes.com/video/arts/artsspecial/100000001861997/three-women.html>



Contemporary Art:  
Film and  
Installation

*The Living Need  
Light, The Dead  
Music* (2014), a  
film by The  
Propeller Group,  
shown in The  
Propeller Group,  
Reincarnations,  
exhibition



“The exhibition invokes connections between cultures and their spiritual relics and rituals, centering on the relationship between the living and the dead, and the spaces created by the living to honor the dead.”

## Contemporary Art: Video

Eve Sussman's *89 Seconds at Alcazar*, 2004

<https://vimeo.com/94697486>





## Contemporary Art: Installation

Dave Muller, Now Where Were We?,  
December 23, 2016 - December 15, 2017



“What makes installation art different from sculpture or other traditional art forms is that it is a complete unified experience, rather than a display of separate, individual artworks. The focus on how the viewer experiences the work and the desire to provide an intense experience for them is a dominant theme in installation art.”

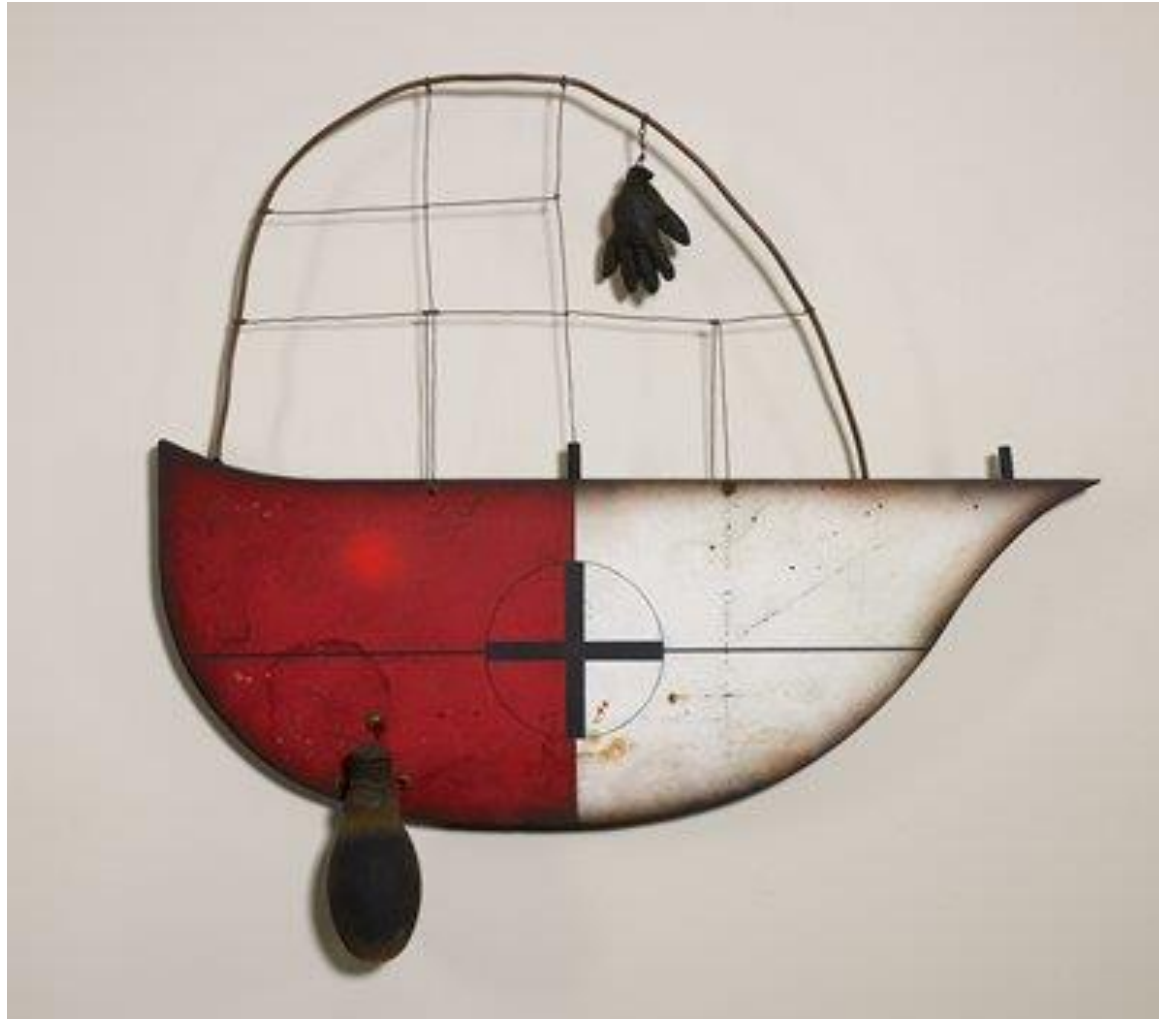
<http://www.tate.org.uk/art/art-terms/i/installation-art>



Renée Stout, American,  
Born 1950

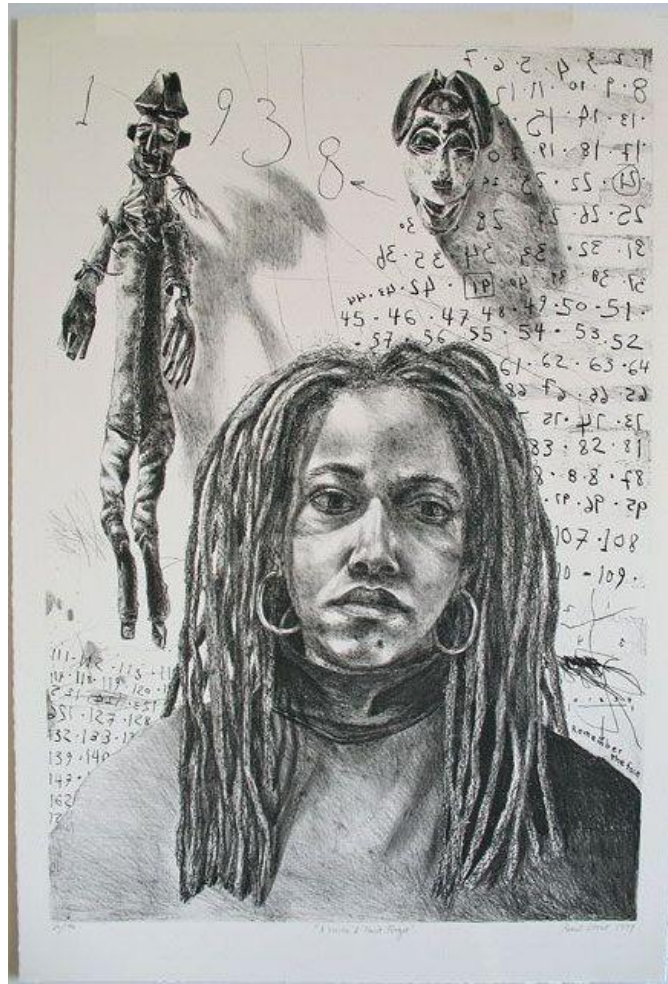


Renée Stout, Crossroads Marker with Little Hand, Reaching, 2015,  
Metal, glass, wood, pigments, other materials, 2016.2





# Renée Stout, A vision I Can't Forget, lithograph, 2000.58



Kehindi Wiley, American  
Born 1977







Jacques-Louis David,  
*Napoleon Crossing*



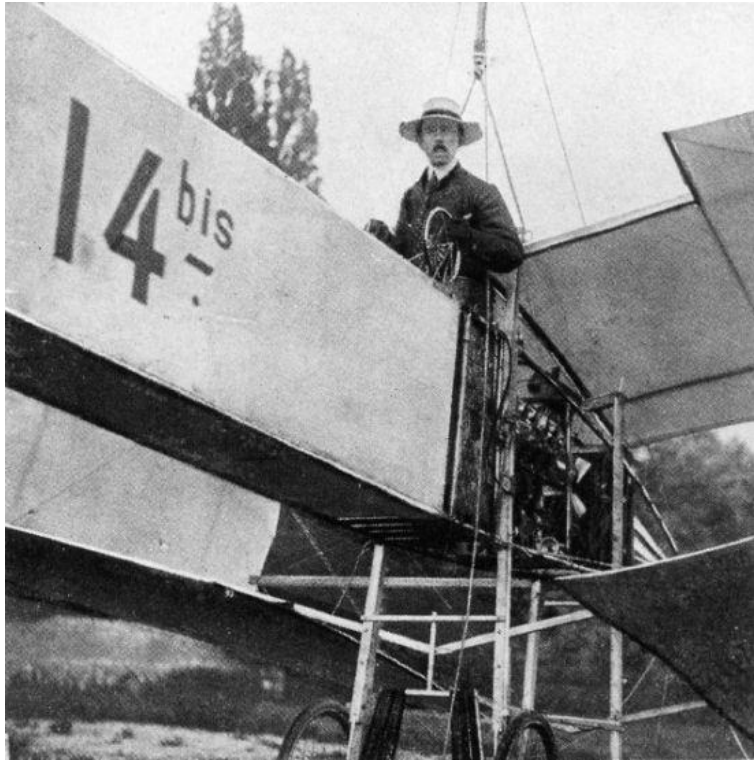
Kehinde Wiley, *Napoleon*



Kehinde Wiley, Santos Dumont - The Father of Aviation II, 2009,







Santos-Dumont







Nick Cave, American  
Born 1959



Nick Cave, Soundsuit,  
2010, 2011.12A,B

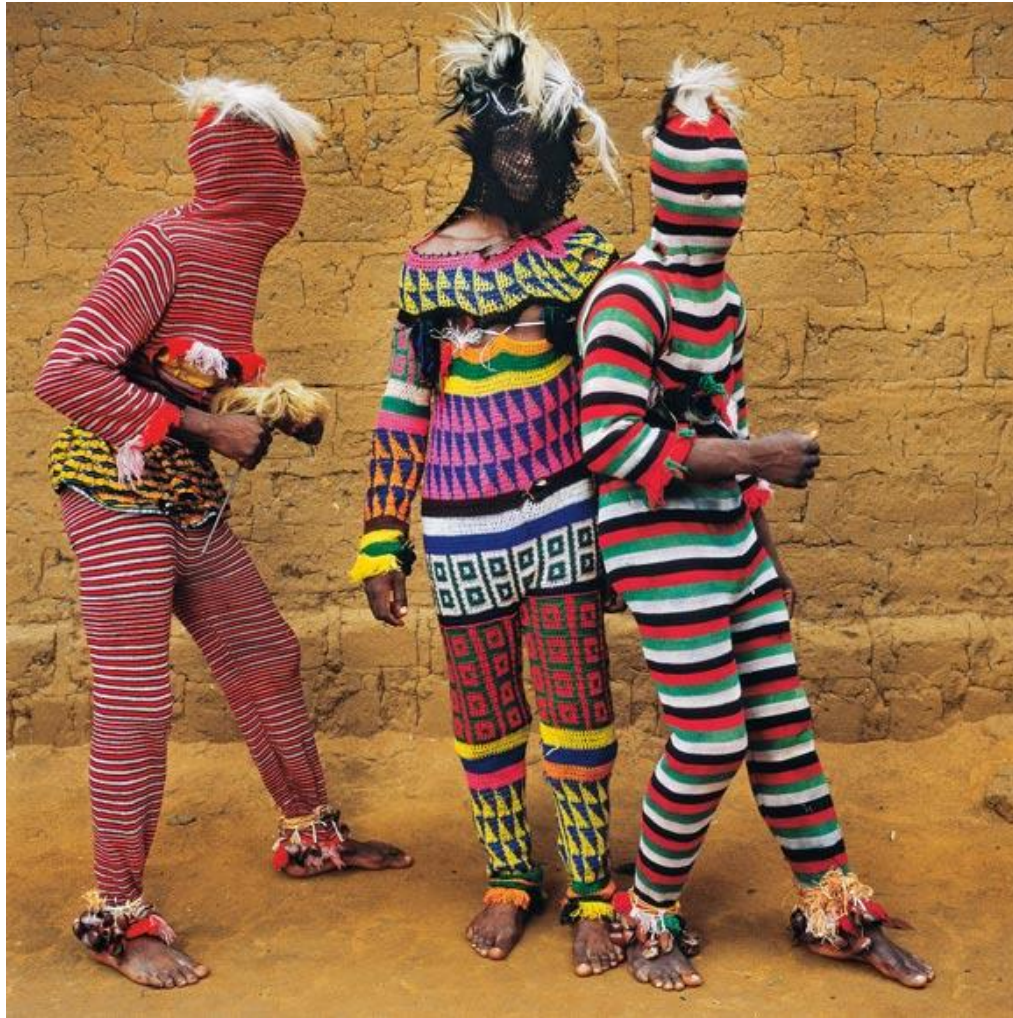




## Nick Cave, Twigs



# Eshinjok Acrobatic Troup, Nigeria





Egungun costume, 1930-1950, Yoruba, cotton, velvet, silk, felt, synthetic fibers, wool, aluminum, wood, buttons, yarn, plastic, string







**Minneapolis Institute of Art**

## Contemporary Art

Yoshitomo Nara, *Your Dog*, 2002,  
2007.100 (n.o.v.)



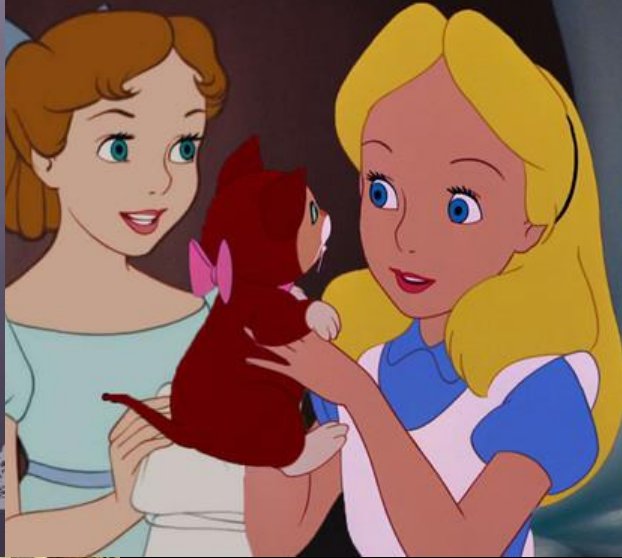




Life is Only One! 2007 ©Yoshitomo Nara

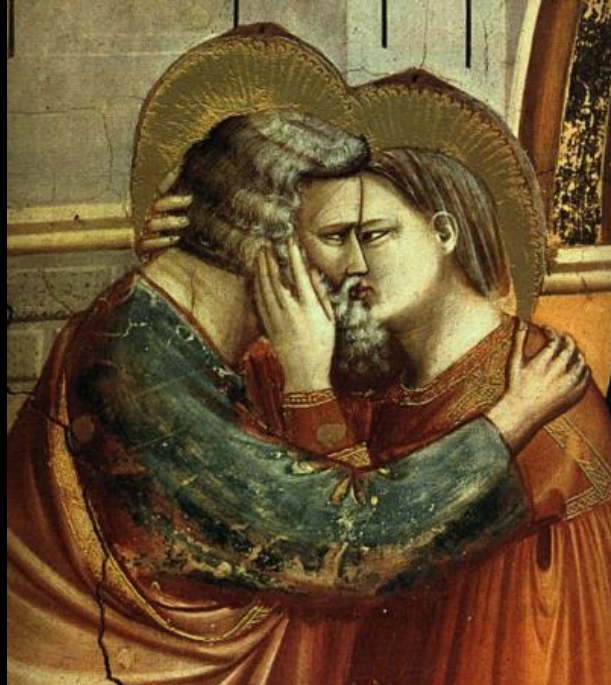


Disney: Alice  
in Wonderland

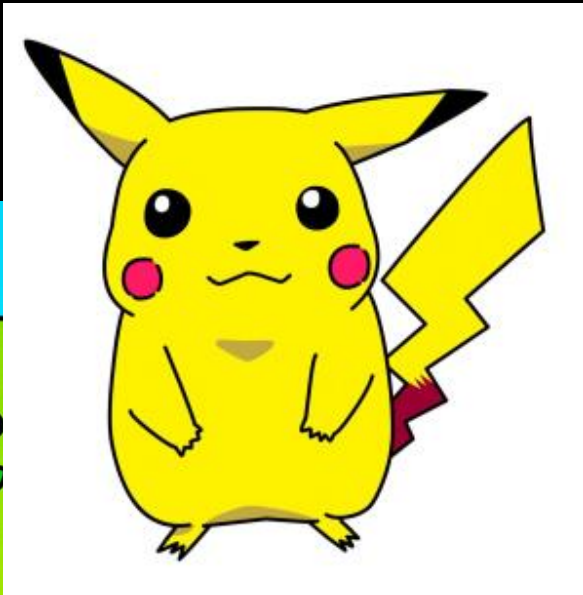


Pokémon: Pikachu

Giotto, Arena  
Chapel



Hello Kitty







## Contemporary Art

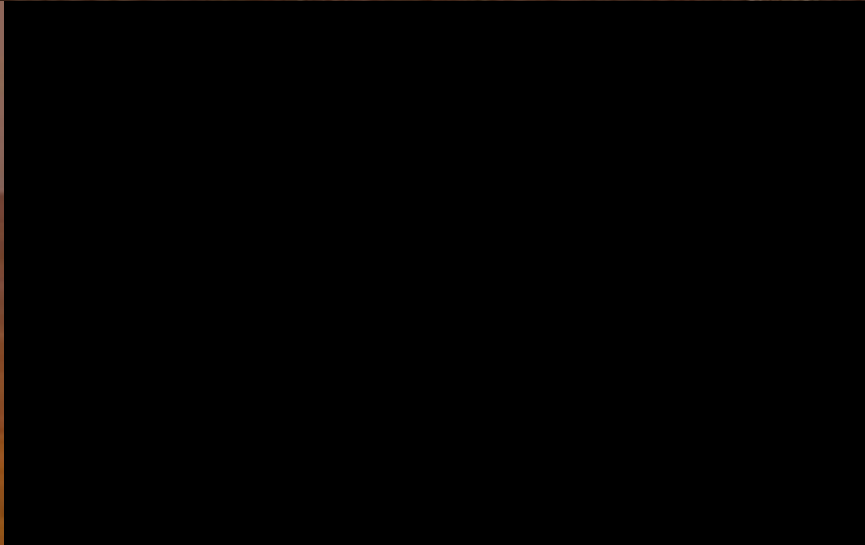
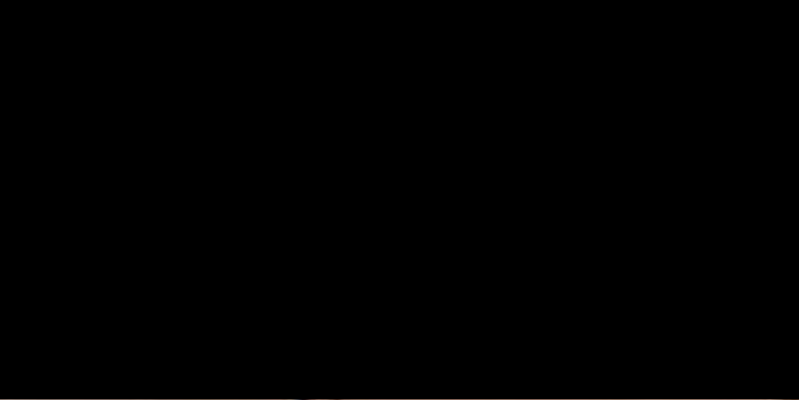


Do Ho Suh,  
*Some/One*, 2005,  
2012.77a-d  
(n.o.v.)











# Contemporary Art



Takashi Murakami, *Panda*,  
2002 (loan object),  
L2008.72.4













## Context Matters!

Takashi Murakami, Panda,  
2002 (loan object),  
L2008.72.4





## Contemporary Art



Morimura Yasumasa,  
*An Inner Dialogue with  
Frida Kahlo (Hand  
Shaped Earring)*, 2001,  
2010.25





## Contemporary Art

Frida Kahlo, *Portrait Dedicated to Dr. Eloesser*, 1940





## Contemporary Art

*I painted my portrait in the year 1940 for Doctor Leo Eloesser, my doctor and my best friend. With all my love. Frida Kahlo.*





# Contemporary Art





Small group discussion

Was the practice of using the lenses helpful in enhancing your understanding of *Marble Chair*?

In your opinion, which lens(es) gave you the best insight into this artwork?

