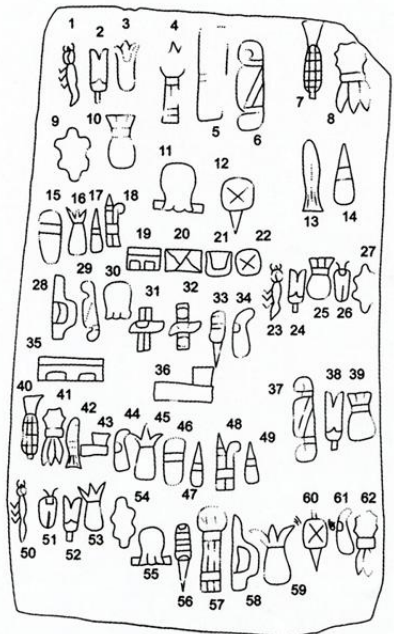




Colossal Head, Olmec, San Lorenzo 1200 BCE – 900 BCE



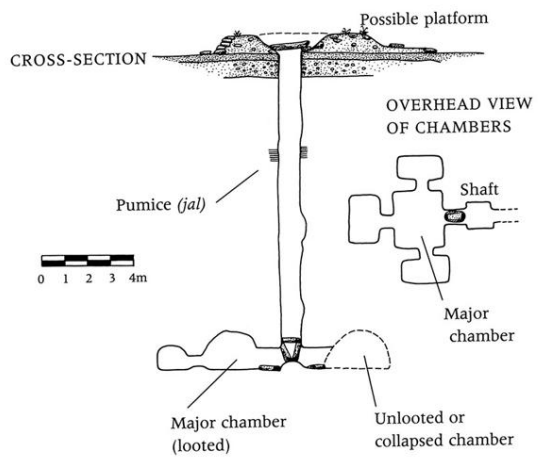


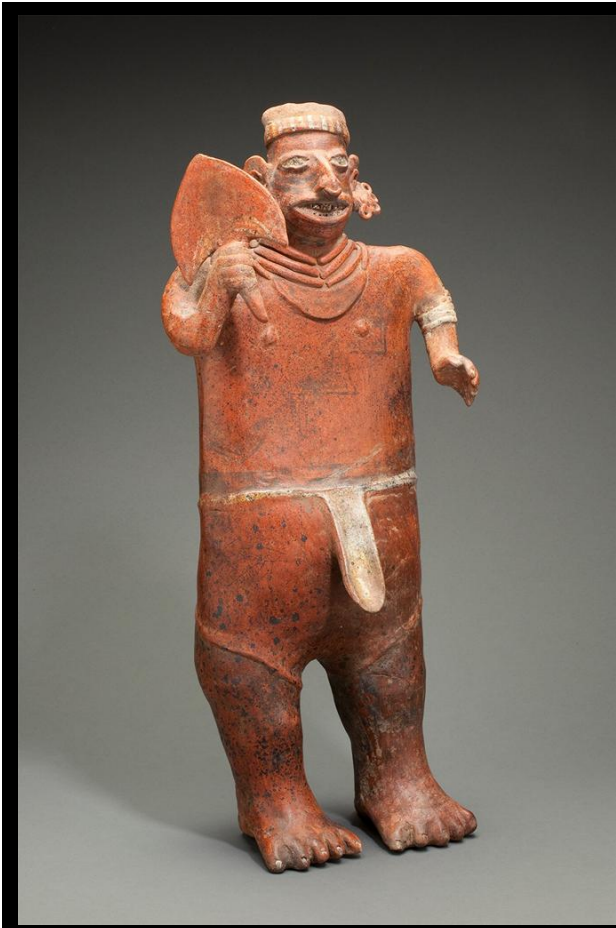


c. 300 BCE – 600 CE



Standing Figure, c. 100-200
Nayarit, West Mexico
Clay and pigments
The John R. Van Derlip Fund, 47.2.30





Standing male and female figures
100 B.C.E. - 250 C.E.
Ixtlan del Rio, Nayarit, Mexico
Ceramic
Fowler Museum at UCLA
Fantel Collection. X2012.15.20a,b





Seated dog
c. 100-300 CE
Colima, West Mexico
Gift of Dr. and Mrs. John R. Kennedy, 99.57.3

