

Minneapolis Institute of Art

# Amazing Animals in Art

## Approaches to Stage Development

October 24, 2018

# Mia



# Amazing Animals in Art: Approaches to Stage Development

How do you take the materials written in the booklet and found in other resources and make them accessible and engaging for all age groups?

Gauge the cognitive development of your group in your introduction

Scaffold questions: descriptive - associative - interpretive

Peru, Nazca,  
Bridge-spout vessel in  
the form of a fish,  
ceramic

200 BCE-600 CE









Nazca lines, Peru



Nazca Double Bridge  
Spout vessel (Pelican with  
mythical whales)  
c.200 BCE - 600 CE



Moche Vessel (Owl),  
c. 200 BCE - 600 CE,



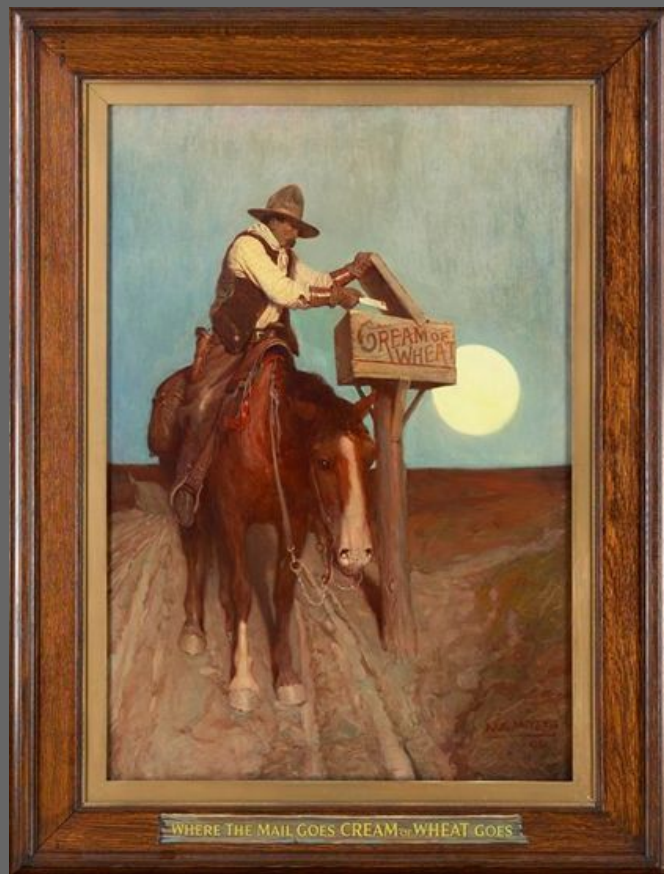
Ugahxpa (Quapaw), Vessel  
(Underwater Panther), c. 1500

Philip R. Goodwin, A "Bear"  
Chance, American, oil on canvas,  
1907

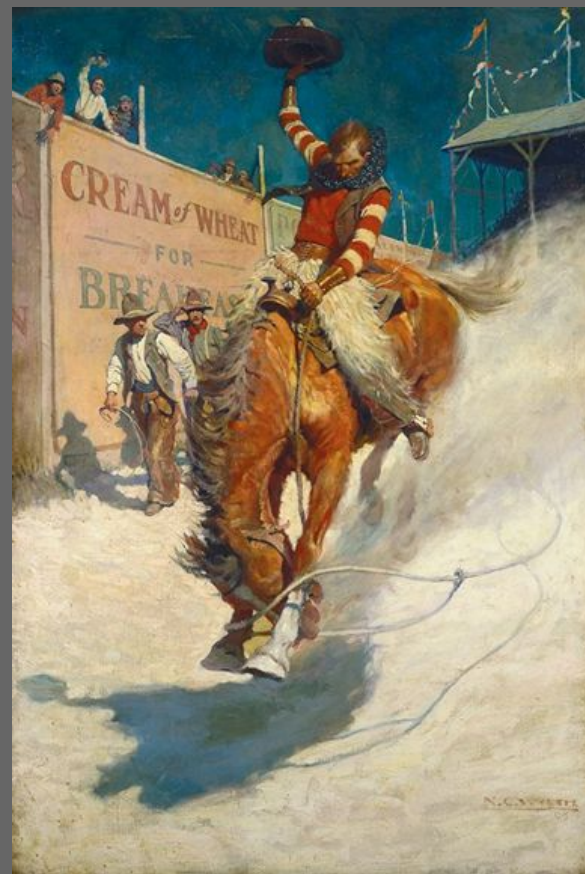




N.C. Wyeth, *Rural Delivery*, (*Where the Mail Goes, 'Cream of Wheat' Goes*), 1906



N.C. Wyeth, *Bronco Buster*, 1906



Chinese, T'ang Dynasty, Horse, glazed  
white clay, about 725



Chinese, T'ang Dynasty, Tomb Retinue,  
about 725

1. lokapalas, guardian warriors  
standing on bulls
2. earth deities, composite  
creatures with feline bodies,  
flaring wings
3. civil officials
4. camels
5. horses







china, Han dynasty, Celestial  
Horse, 25-220



China, Han dynasty, Prancing  
Horse, 1st-3rd century

Nigeria, Edo, Benin  
Kingdom, Leopard,  
bronze, 18th century





British soldiers sit surrounded by Benin works of art during the British Punitive Expedition of 1897 (documentary photograph). Rawson, Sir Harry Holdsworth, 1897.







Edo, memorial head, Nigeria,  
2017.13



Edo, Tusk, 1775-1777,  
ivory, 56.33

Hispano-Moorish, Europe,  
Statuette, 11-12th century, gold  
72.12









Aquamanile (Ram-shaped Ewer), 13th-14th century, Iran, Kashan ware, 50.46.451

Zun wine vessel in the shape of an owl, 13th-12th century BCE  
Bronze, 50.46.116



Figure of a ram, 5th century, Graeco-Egyptian, Limestone, 62.53



Ishida Yutei, Japan, 1721-86, 1700s, Flock of Cranes, ink, color and gold and gilded paper, 2015.79.73.2







Birds in Landscape, early 16th century

Shūgetsu Tōkan, Ink and color on paper, 2013.29.20.2



Pack your bags...

Friends Community  
Room is closed to us  
at 12:30, please move  
your belongings to the  
Tour Office

