

---

# **William Gray Purcell and George Grant Elmslie**

- **Purcell and Feick 1907-1909**
- **Purcell, Feick and Elmslie 1910-1913**
- **Purcell and Elmslie 1913-1921**
- **Worked closely with clients to fulfill their needs**
- **Social responsibility in architecture**



William Gray  
Purcell  
(1880-1965)

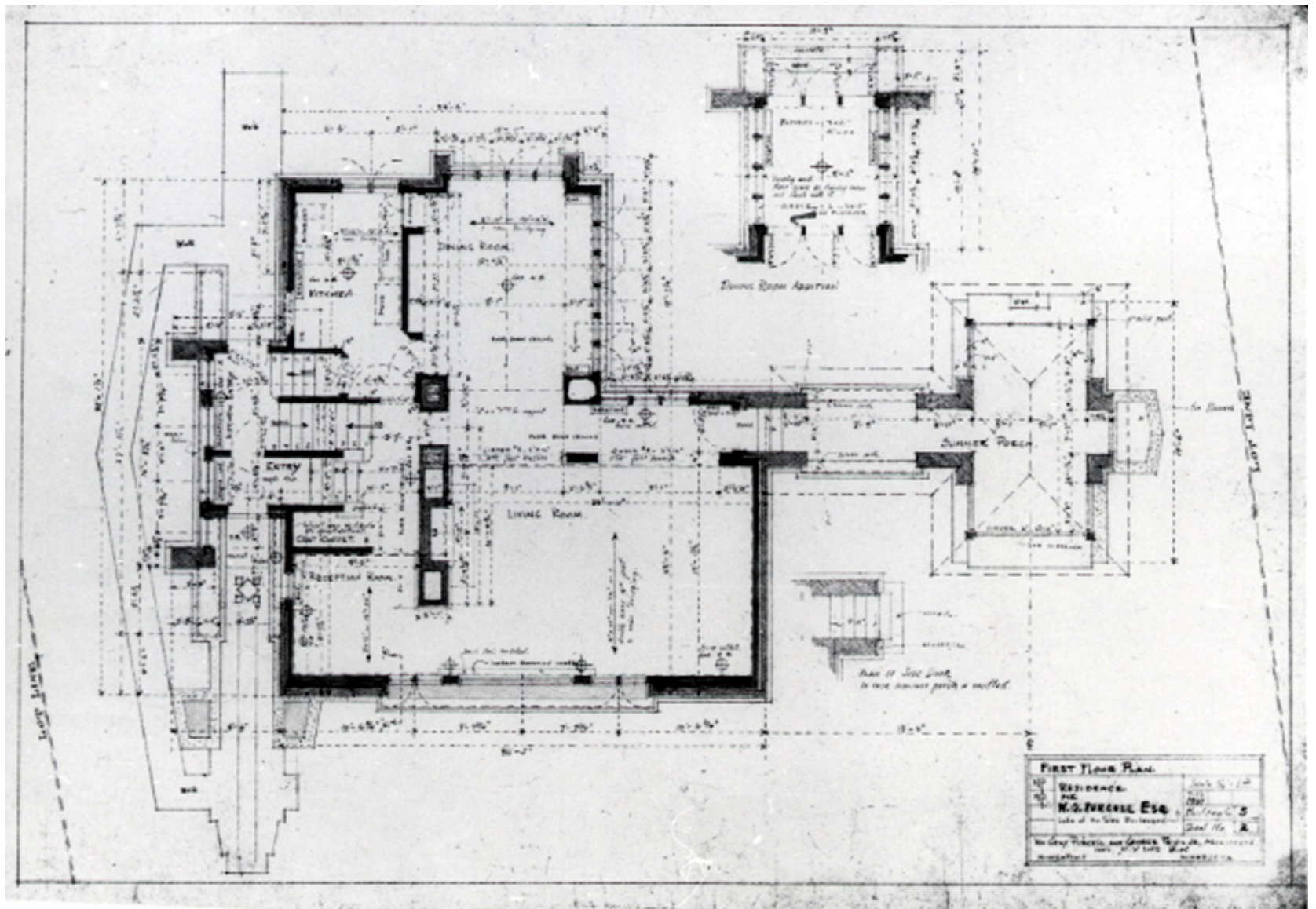


Purcell, Feick and Elmslie office: George Feick left foreground, Marion Alice Parker left rear, George Elmslie standing at right of drafting table



---

Catherine Gray  
(grandmother)



Catherine Gray house (aka Wm. G. Purcell), 1908  
 2409 East Lake of the Isles Parkway, Minneapolis



Catherine Gray house, Minneapolis, 1908

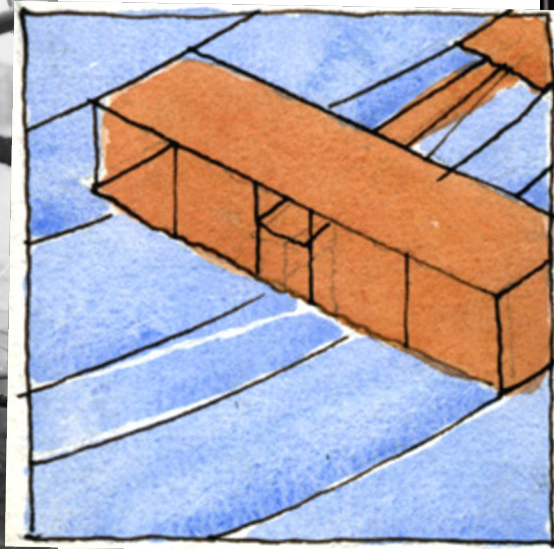
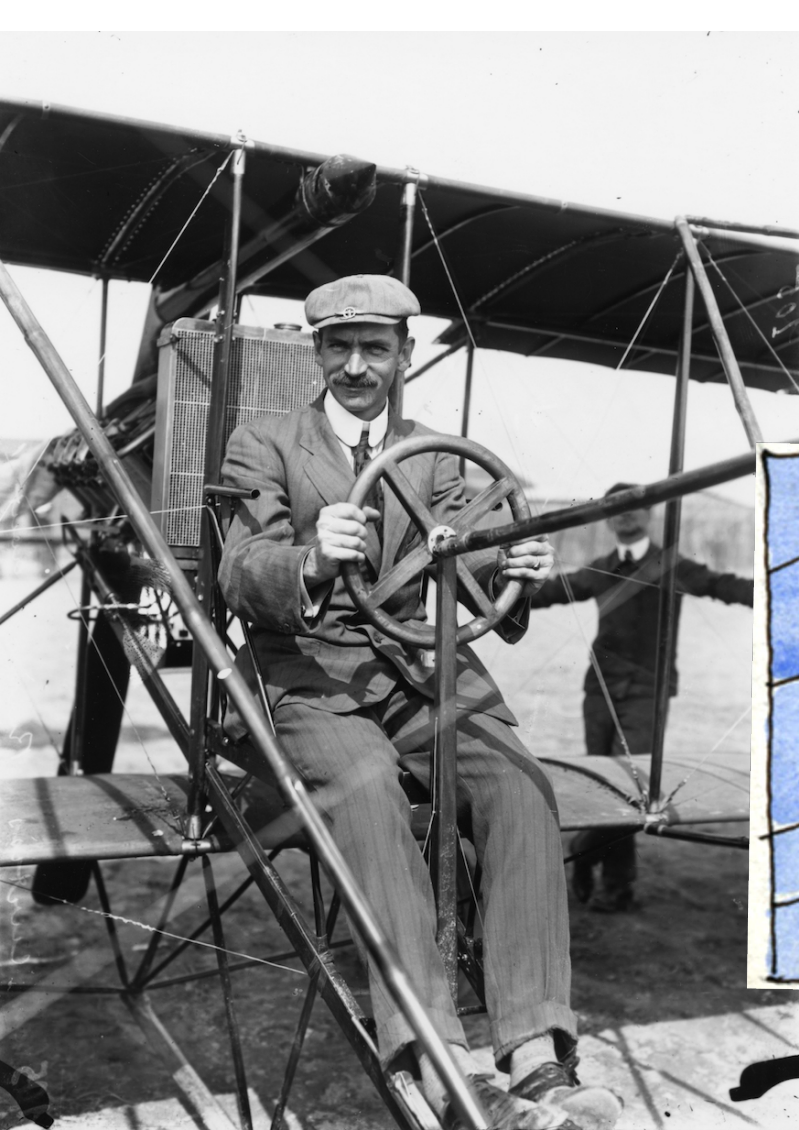


**Minneapolis Institute of Art**



Minneapolis Institute of Art





Glenn Curtiss at the controls  
of a Curtiss aircraft, and Purcell and Feick, window  
with biplane design, George W. Stricker House,  
Minneapolis, 1909, Mia 94.28.1

Purcell, Feick and Elmslie  
E.L. Powers House  
1635 West 26<sup>th</sup> Street  
Minneapolis  
1910









---

Purcell, Feick and Elmslie, Edward W. Decker House, Wayzata, 1911-12 (main house demolished 1948)



Purcell, Feick and Elmslie, Edward W. Decker House,  
Dining Room and dining chair, Mia 93.89.1-4





Edna S. Purcell (Purcell-Cutts) House, Minneapolis, 1913  
Mia 90.92, 2328 Lake Place



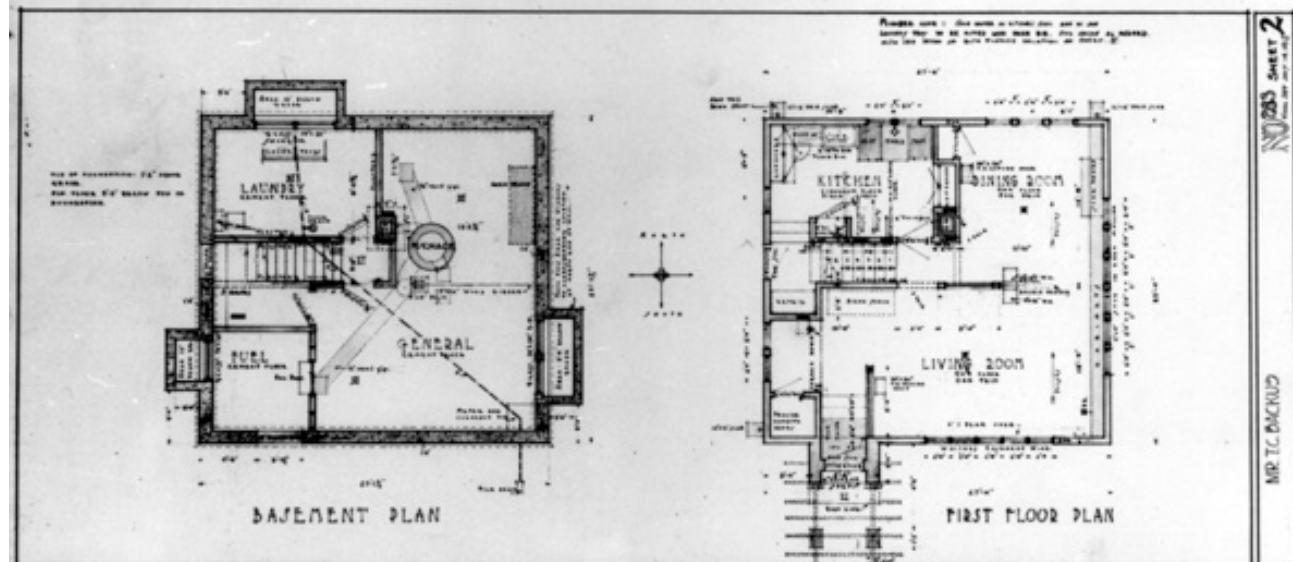


Purcell, Feick and Elmslie,  
Edna S. Purcell House (Purcell-Cutts  
House, Minneapolis, 1913



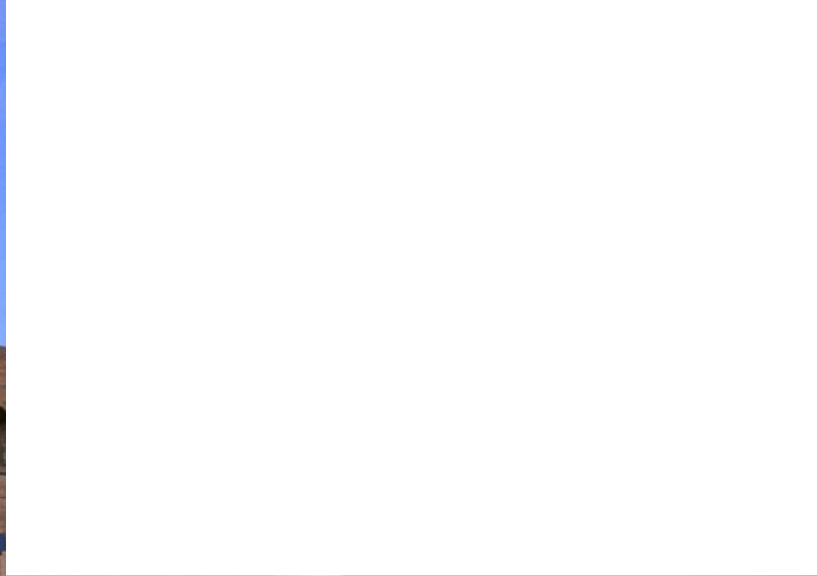


Purcell and Elmslie,  
C.T. Backus House,  
Minneapolis, 1915

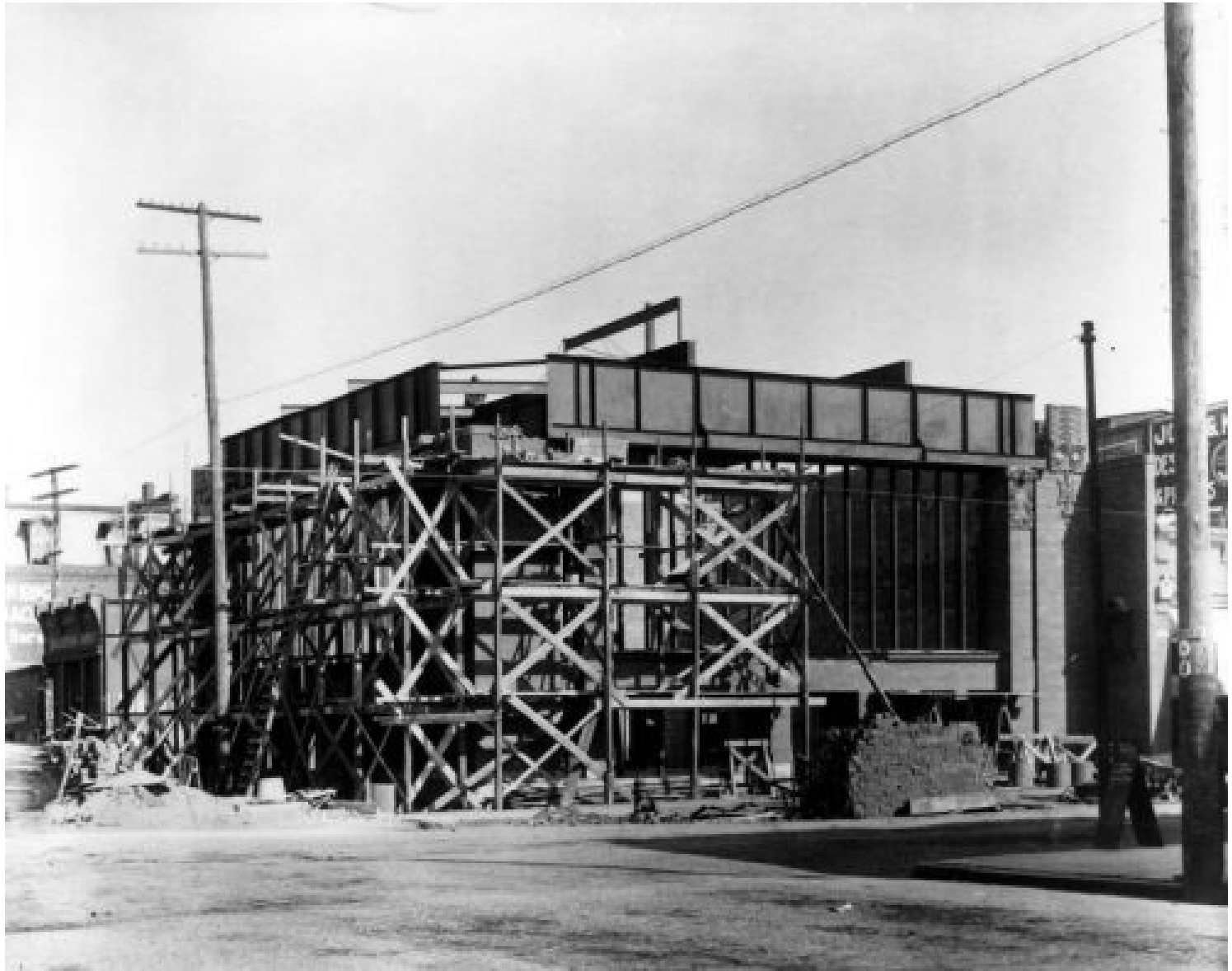




Merchants Bank of Winona, MN, 1912-13



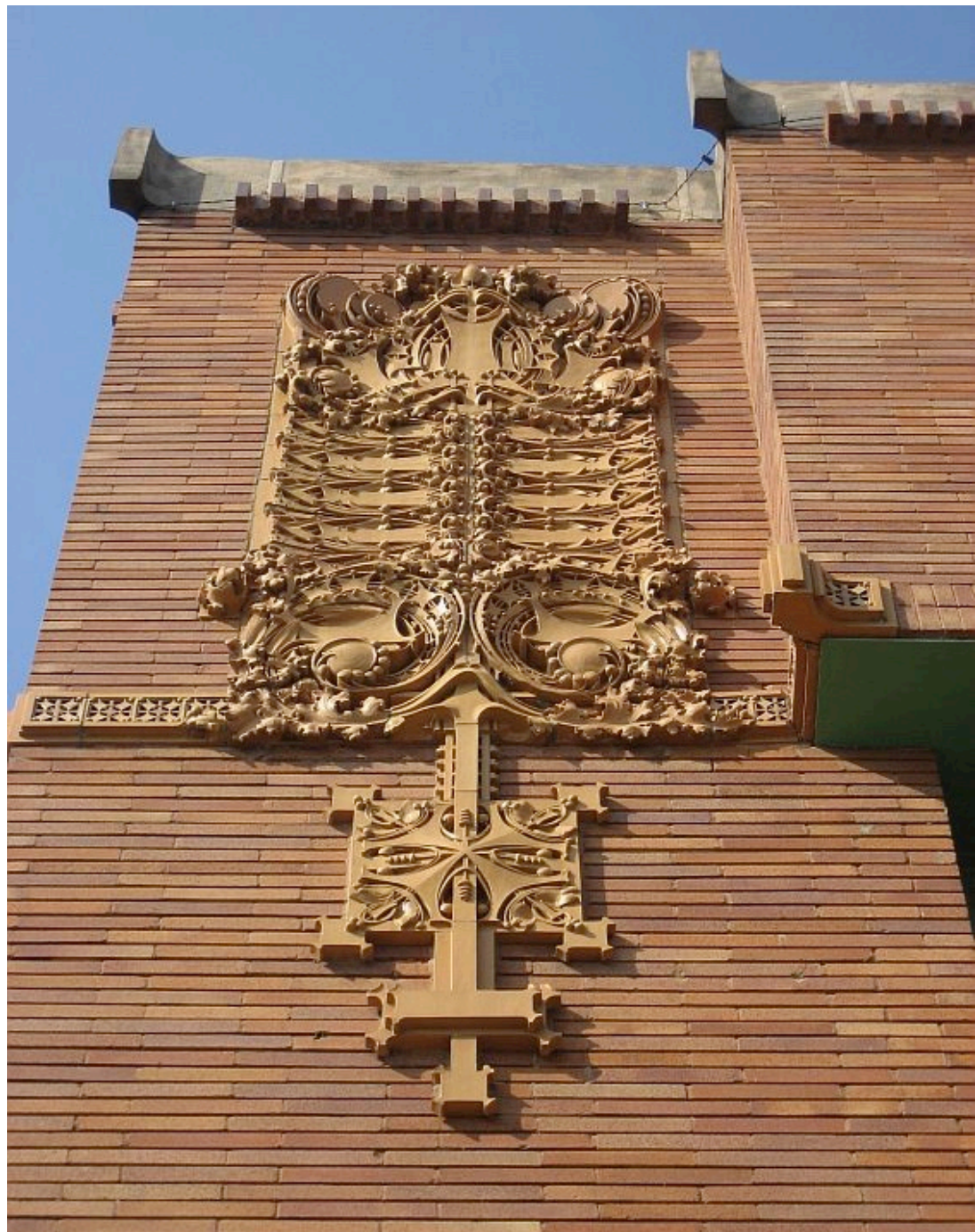
**Minneapolis Institute of Art**



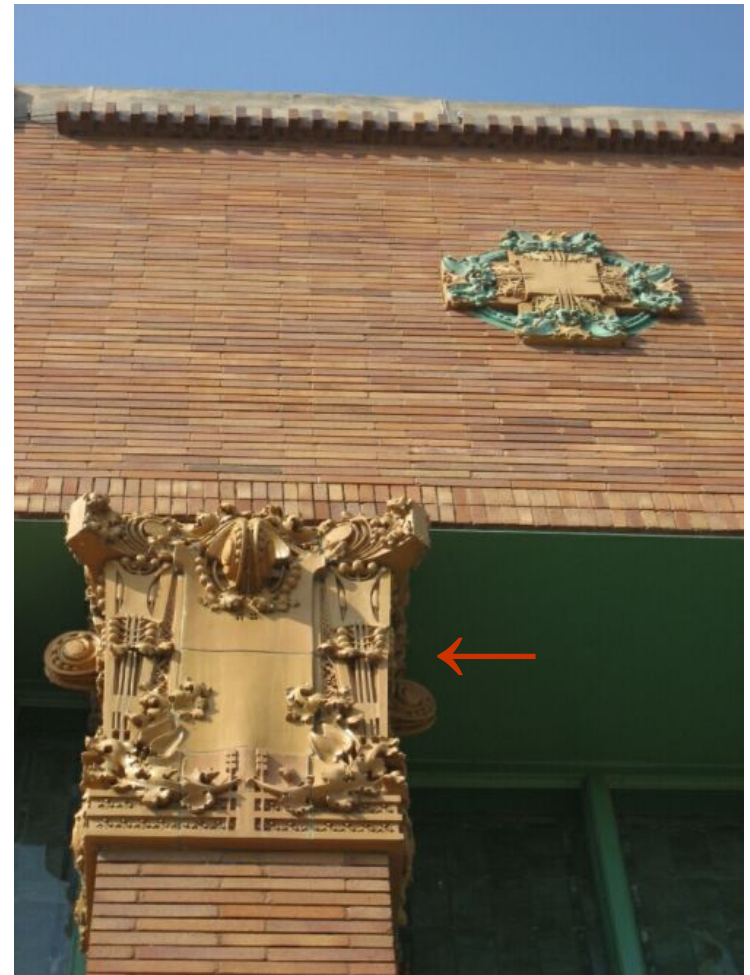
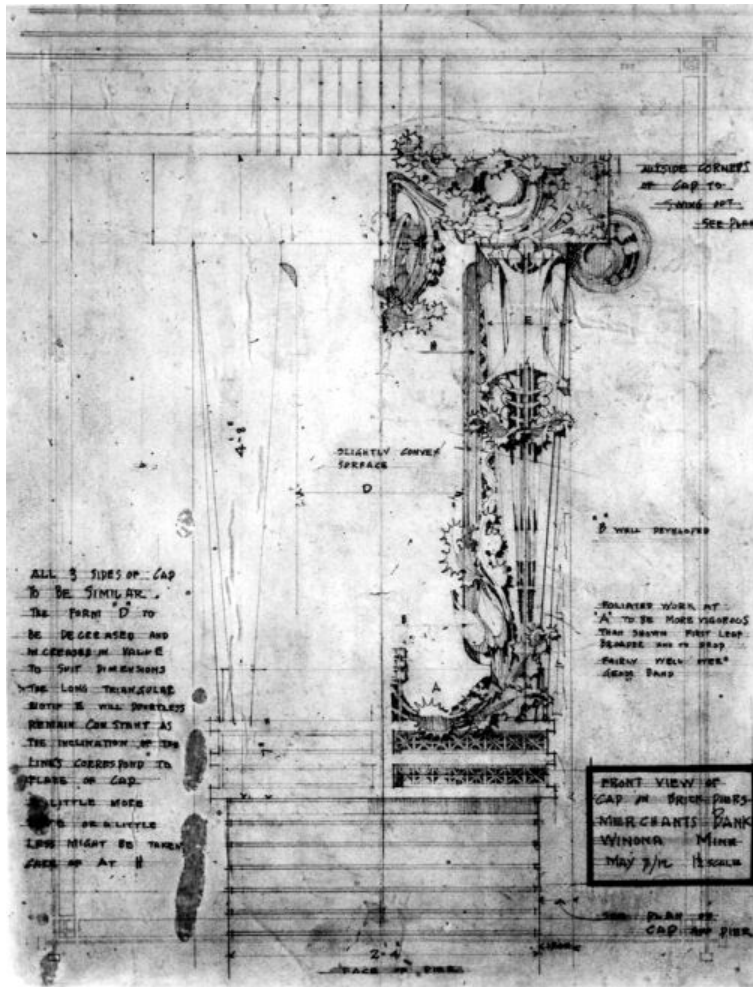
**Minneapolis Institute of Art**



**Minneapolis Institute of Art**



**Minneapolis Institute of Art**







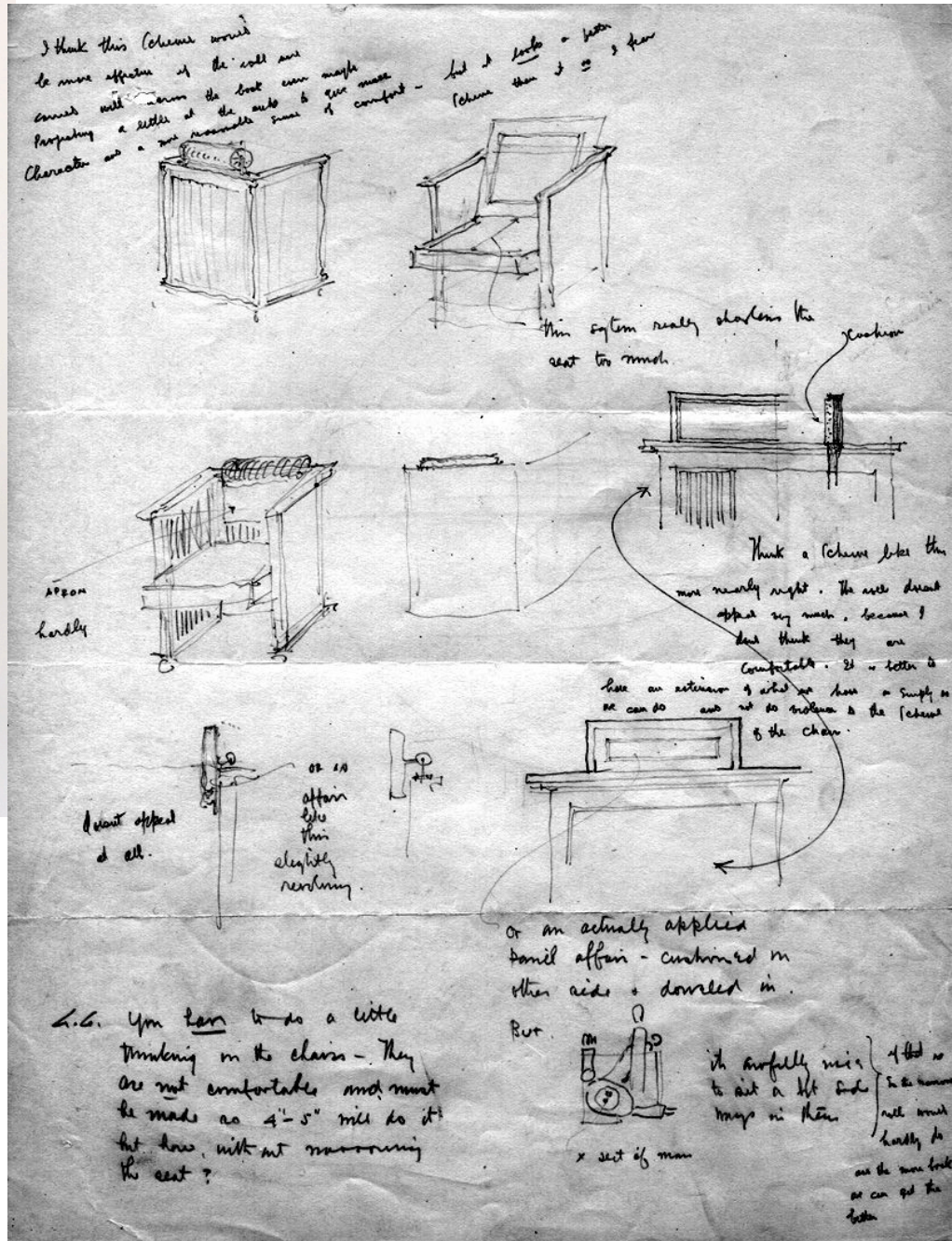
Lumiere autochrome of interior, Merchants Bank of Winona, with murals by Albert Fleury representing Winona area



**Minneapolis Institute of Art**



Purcell and Elmslie, chair  
and chair sketches for Merchants  
Bank of Winona, c. 1912  
Sketch: Purcell Papers, Northwest  
Architectural Archives  
Chair: Mia 93.54



---

# **Cost Memorandum – Merchants Bank of Winona**

**Total cost of the building: \$44,052.28**

**Terra cotta fabrication and installation: \$1,980.00**

**Glass mosaic: \$140.00**

**Furniture: \$490.00**

**Painted murals: \$1,195.00**

**Lighting fixtures: \$1,227.00 (some made using stock elements)**



**The Motor Inn**

<p style="font-size: small;">NORTHWESTERN PHONE MAIN 4263</p> <p style="font-weight: bold;">HENRY G. GOOSMAN</p> <p style="font-size: x-large; font-style: italic;">Automobiles</p>		<p style="font-size: small;">TEL-STATE PHONE 3102</p> <p style="font-size: x-small;">USED <b>Roadsters AND Touring Cars</b> FOR SALE LIMOUSINE CARS IN RENTAL SERVICE AUTO STORAGE OPEN DAY AND NIGHT</p>
---	--	---

1023 FIRST AVENUE SOUTH, MINNEAPOLIS, MINN.

THE MOTOR INN

CONSTRUCTED to meet the needs and satisfy most advanced ideas relative to the modern garage. Absolutely fire-proof, steam heated, dressing and check rooms. Storage space for forty-five cars. Roadsters, five and seven passenger touring and Limousine cars for opera and party use. Expert drivers. Rates furnished on application. Northwestern Distributor **GLIDE and SPEEDWELL AUTOMOBILES.**

HENRY G. GOOSMAN.



Purcell and Feick, Goosman Garage (Motor Inn), 1907, and Purcell, Feick and Elmslie, Electric Carriage and Battery Company, Minneapolis, 1910

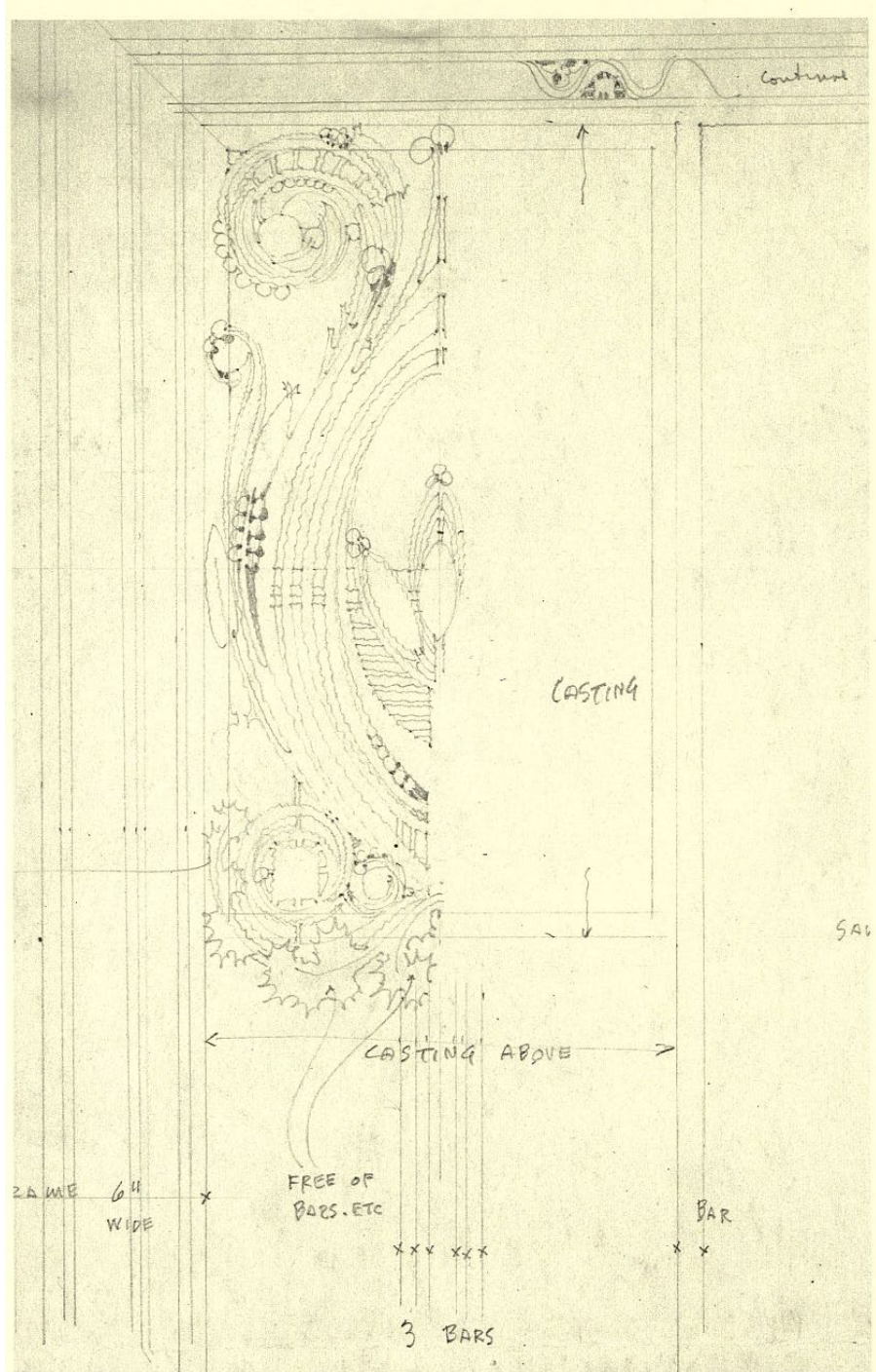


Purcell and Elmslie,  
Minnesota Phonograph  
Company, Minneapolis,  
1914, and light fixture,  
Mia 98.235.2





Woodbury County  
Courthouse,  
Sioux City, Iowa,  
William L. Steele, architect,  
Purcell and Elmslie,  
associate architects,  
1915-18

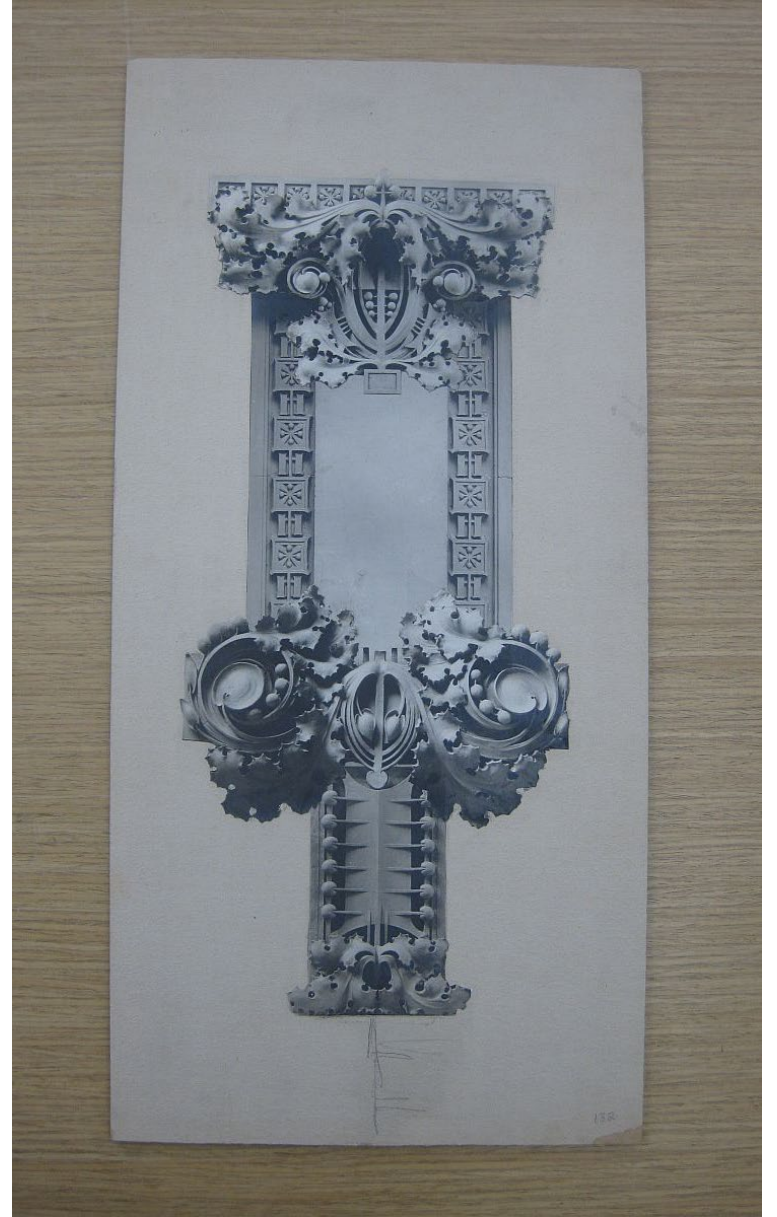


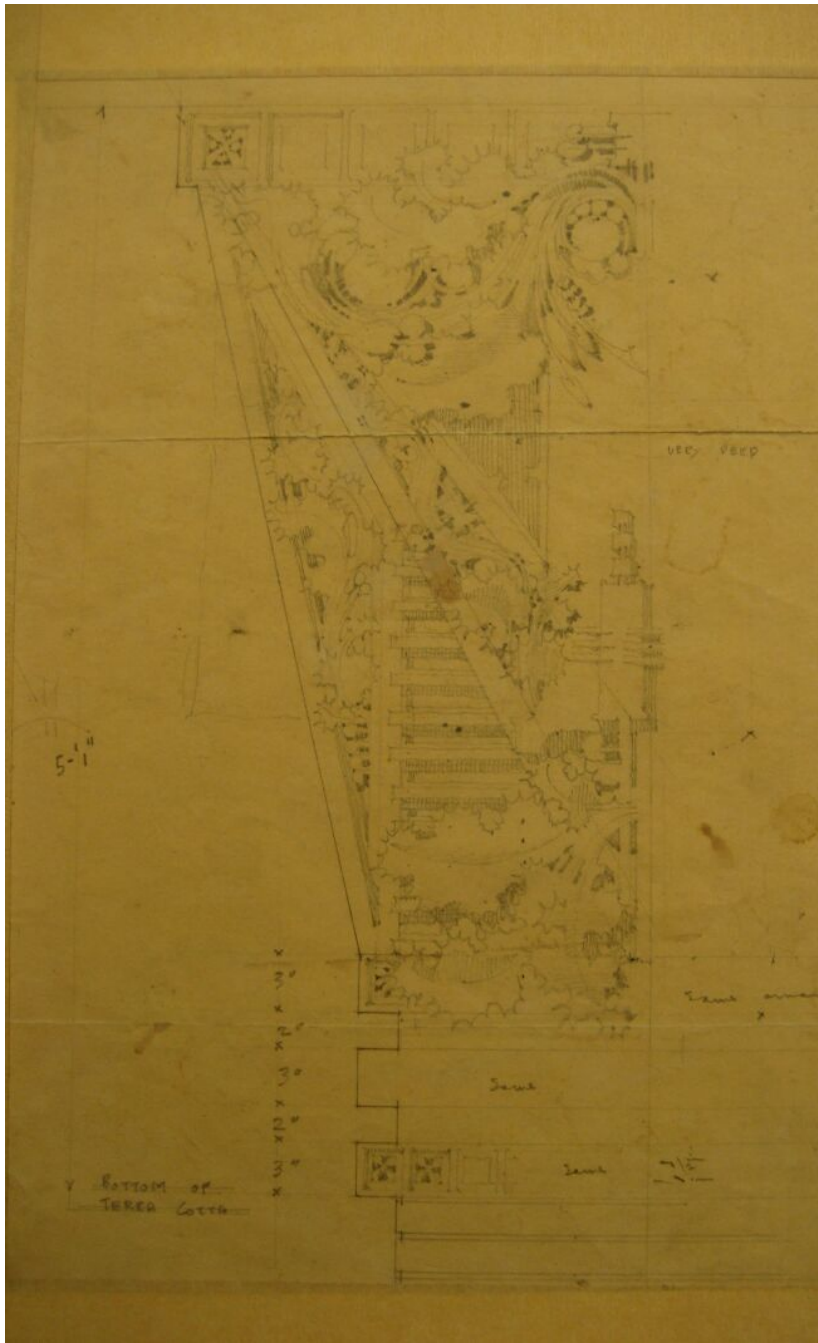
George Grant Elmslie,  
Sample cast for elevator bank  
decoration, Woodbury County  
Courthouse, c. 1916, 2002.211











# George Washington Maher (1864-1926)



J. R. Watkins Medical Company Administration building  
and 10-story laboratory, Winona, MN, 1910-14

Minneapolis Institute of Art



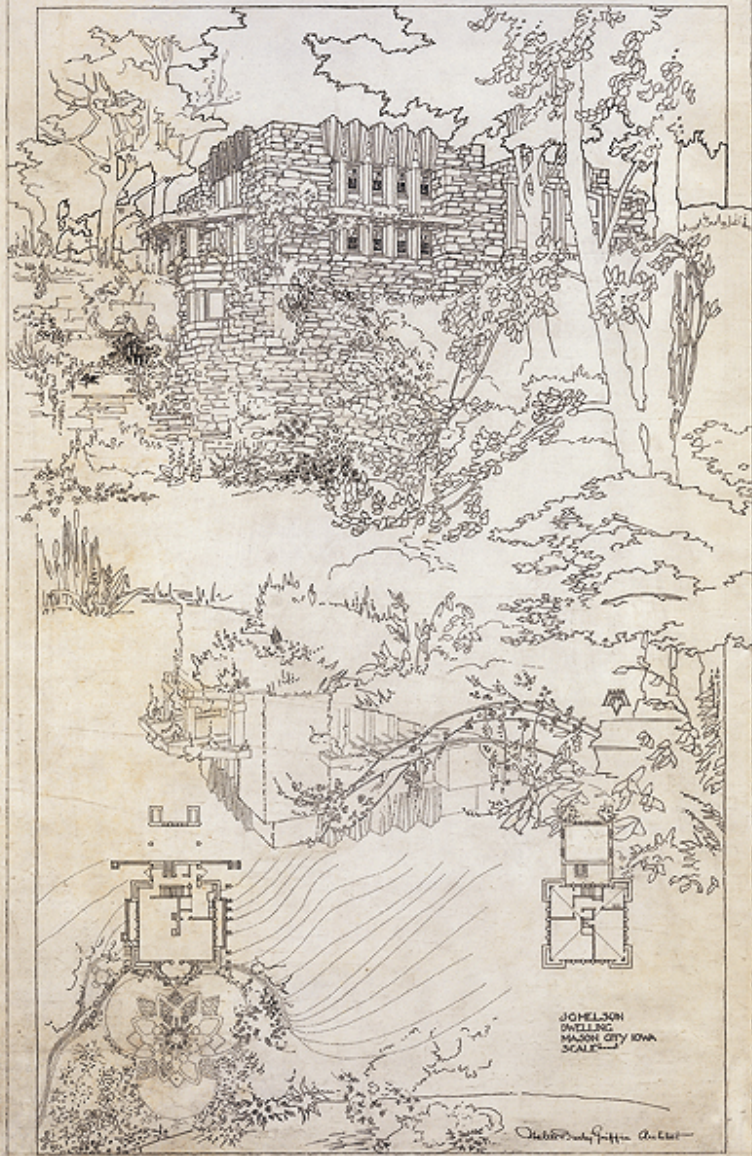
---

George Maher, "Rockledge," Homer, MN, 1912 (demolished 1987), for E. L. King and Grace Watkins King



George Maher, dining room,  
armchair, and coffee and tea  
service from Rockledge,  
Mia 88.45 and 95.36.1-7





Walter Burley Griffin (1876-1937) and Marion Mahony Griffin (1871-1961), in 1927, And Joshua Melson House, Mason City, Iowa, 1912







Walter Burley Griffin,  
James C. Blythe House,  
1913, and Harry D. Page  
House, 1912,  
Walter Burley Griffin,  
Mason City, Iowa

Minneapolis Institute of Art

