

Minneapolis Institute of Art

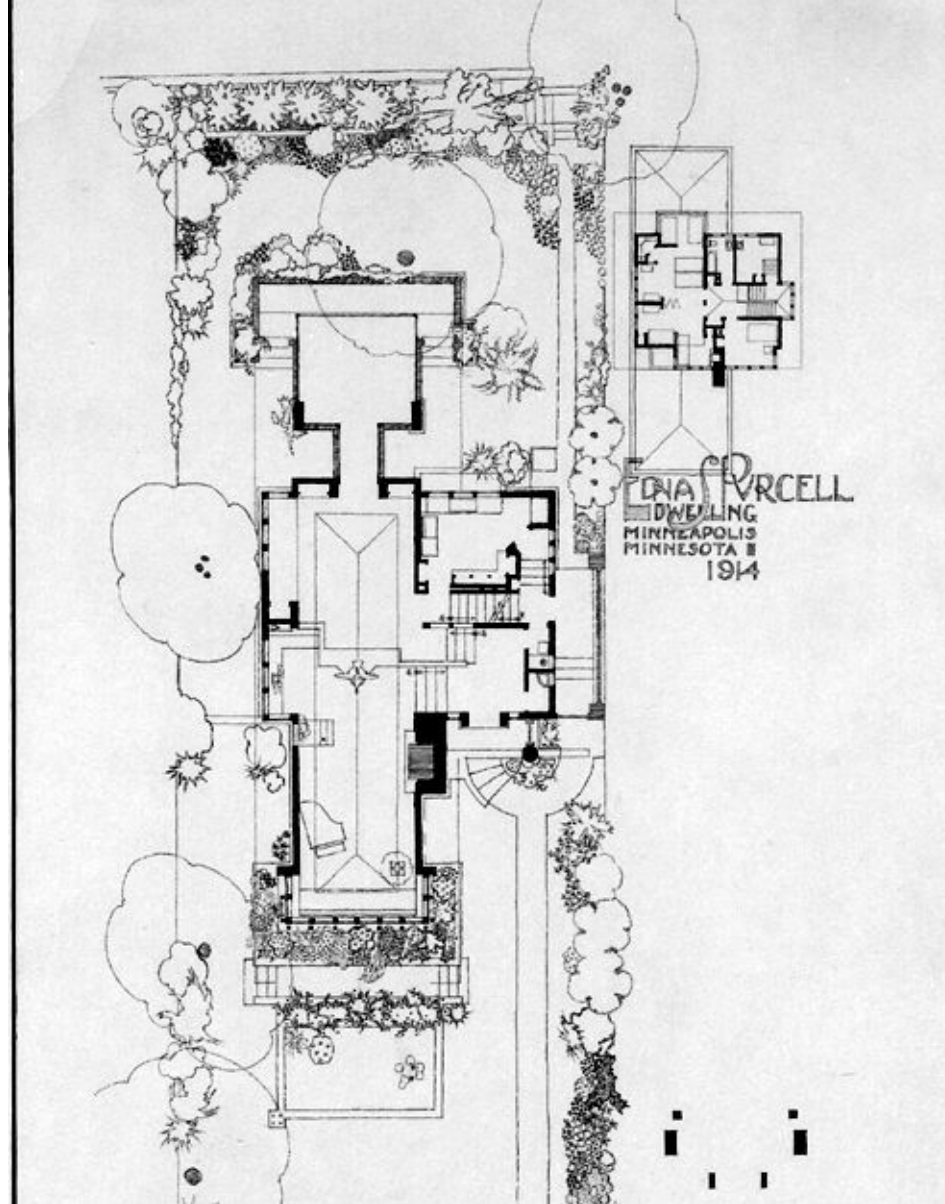
A Virtual Tour of the Purcell-Cutts House

Mia



Minneapolis Institute of Art

First floor
Plan →



2nd Floor
Plan
←

Edna S. Purcell (Purcell-Cutts) house, 1913



Edna S. Purcell (Purcell-Cutts) House, Minneapolis, 1913
Mia 90.92, 2328 Lake Place



Minneapolis Institute of Art



Minneapolis Institute of Art



Minneapolis Institute of Art



Minneapolis Institute of Art



Minneapolis Institute of Art



Minneapolis Institute of Art



Minneapolis Institute of Art







Minneapolis Institute of Art



Minneapolis Institute of Art



Minneapolis Institute of Art



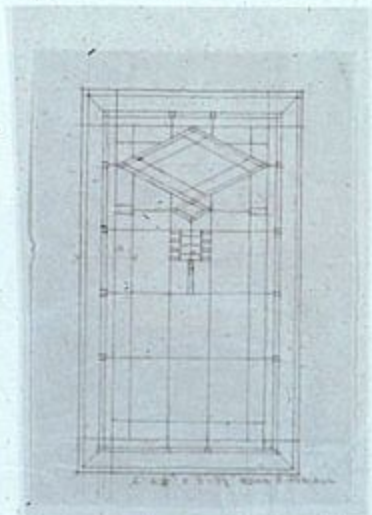
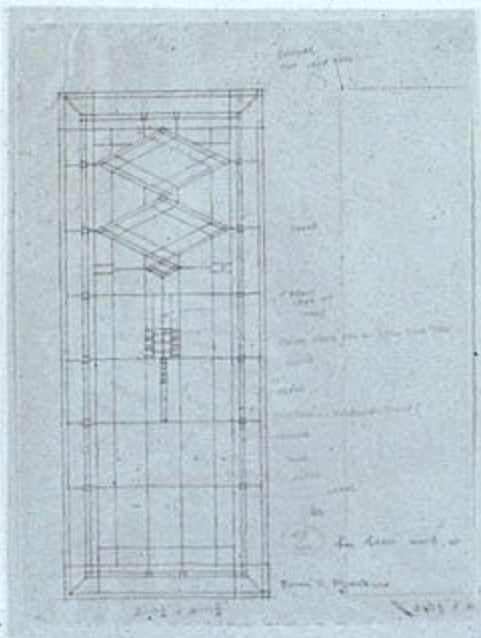
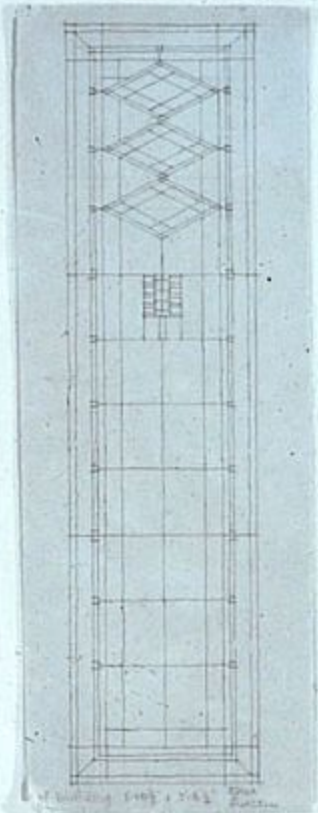
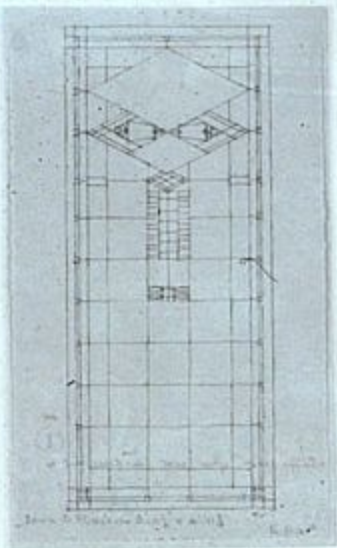
Minneapolis Institute of Art



Minneapolis Institute of Art

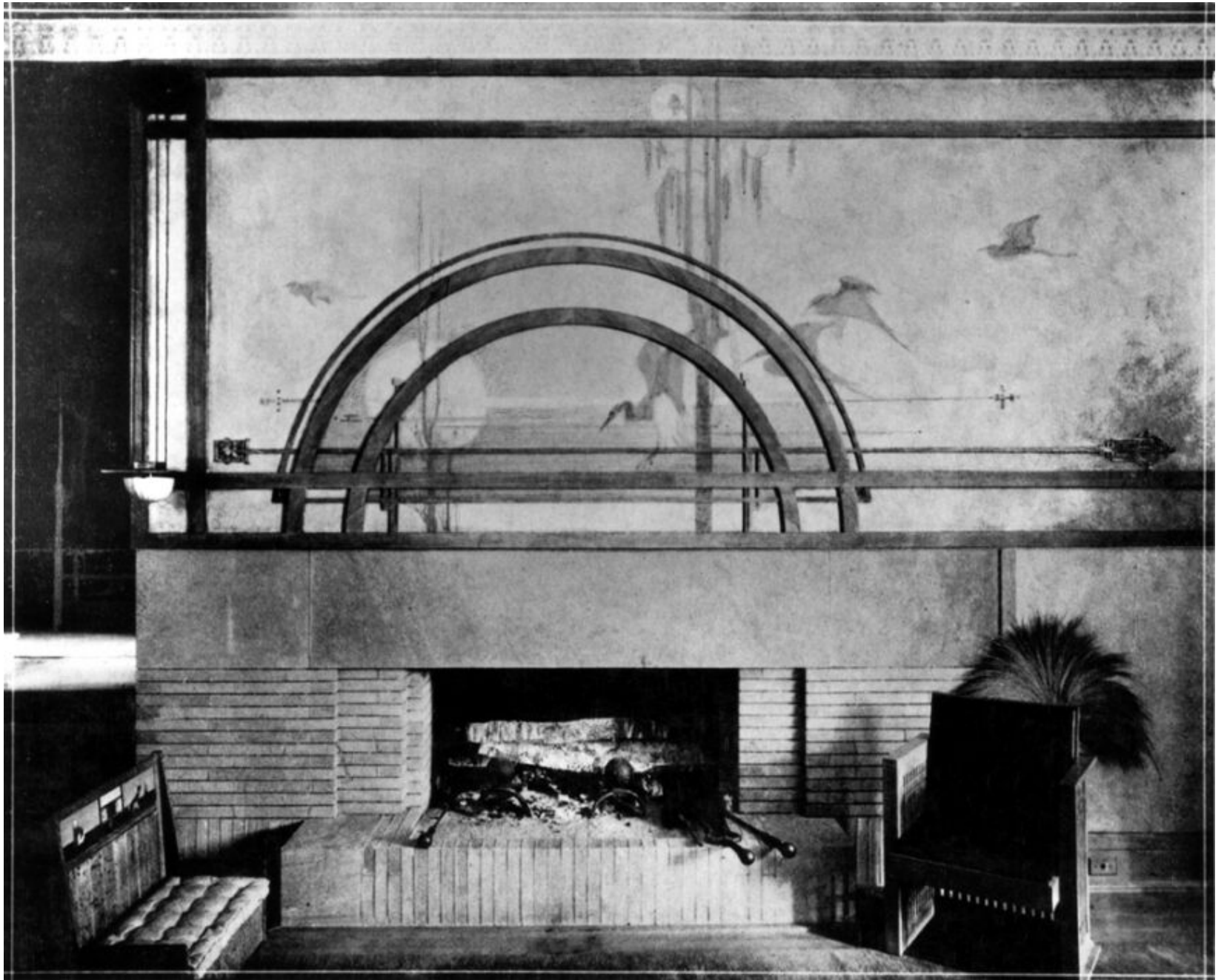


Minneapolis Institute of Art

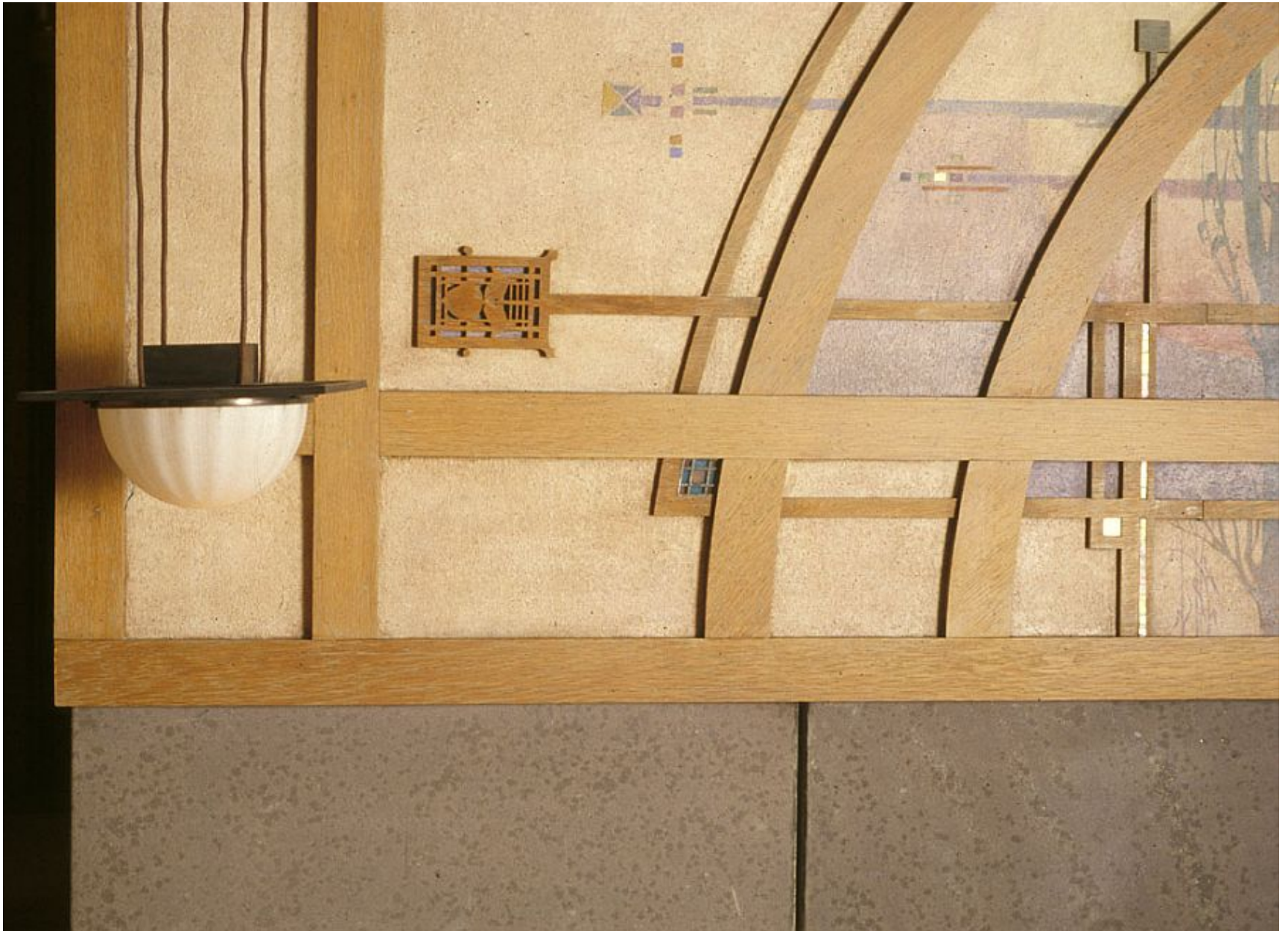




Minneapolis Institute of Art



Minneapolis Institute of Art



Minneapolis Institute of Art





Minneapolis Institute of Art



Minneapolis Institute of Art



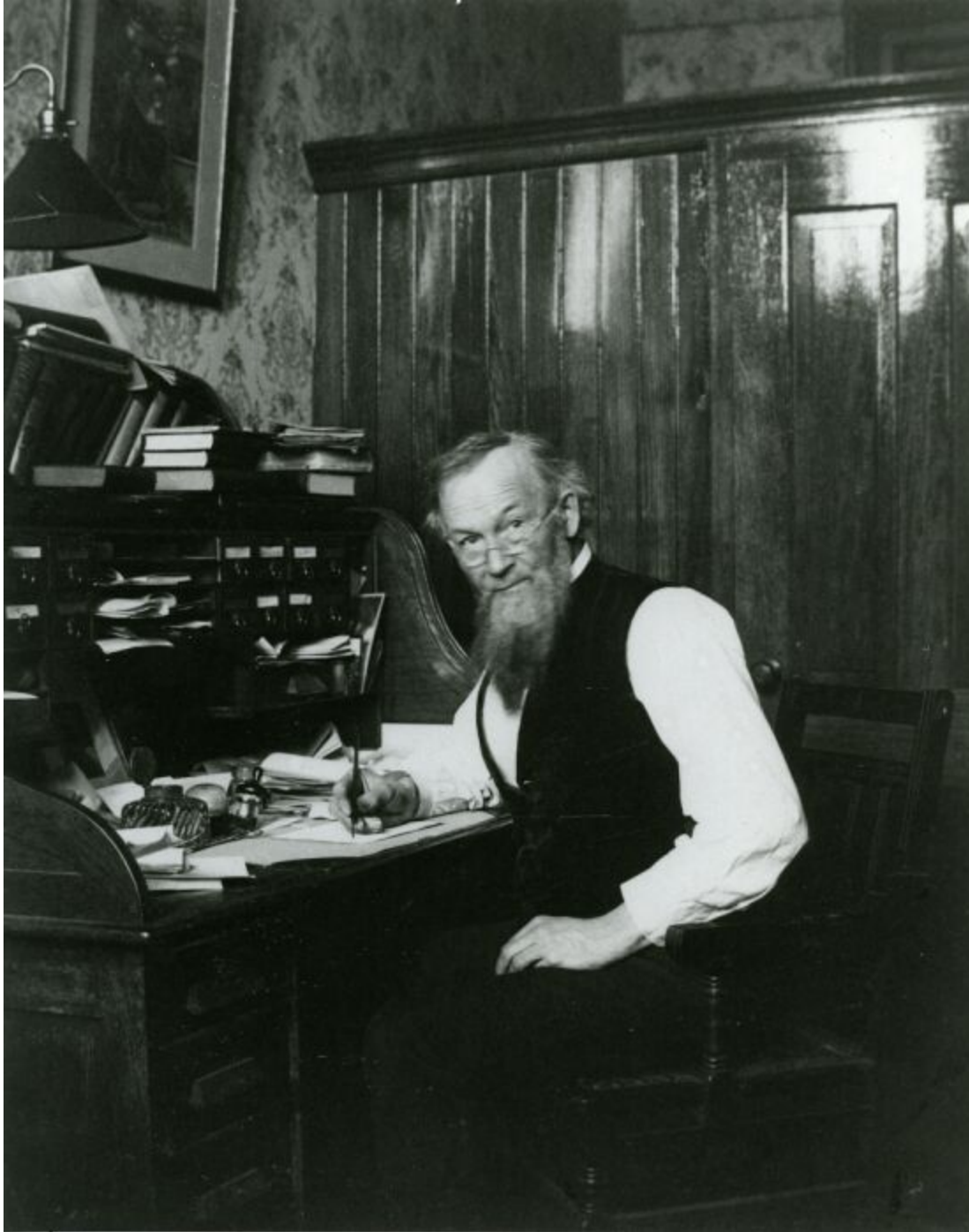
Minneapolis Institute of Art



Minneapolis Institute of Art



Minneapolis Institute of Art



**William
Cunningham Gray
(Grandfather)**



Minneapolis Institute of Art



Minneapolis Institute of Art



Minneapolis Institute of Art



Minneapolis Institute of Art



Minneapolis Institute of Art





Minneapolis Institute of Art



Minneapolis Institute of Art



George Grant Elmslie, Dining room suite for Mrs. Hanna, 1915, Mia 2011.3.1-6



George Grant Elmslie,
Dining room suite for Mrs. Hanna,
1915, Mia 2011.3.1-6





Minneapolis Institute of Art



Minneapolis Institute of Art



Minneapolis Institute of Art



Minneapolis Institute of Art



Minneapolis Institute of Art





Minneapolis Institute of Art



Minneapolis Institute of Art



Minneapolis Institute of Art



Minneapolis Institute of Art



Minneapolis Institute of Art



Minneapolis Institute of Art



Minneapolis Institute of Art



Minneapolis Institute of Art





Minneapolis Institute of Art



Minneapolis Institute of Art



Minneapolis Institute of Art



Minneapolis Institute of Art



Minneapolis Institute of Art







Minneapolis Institute of Art

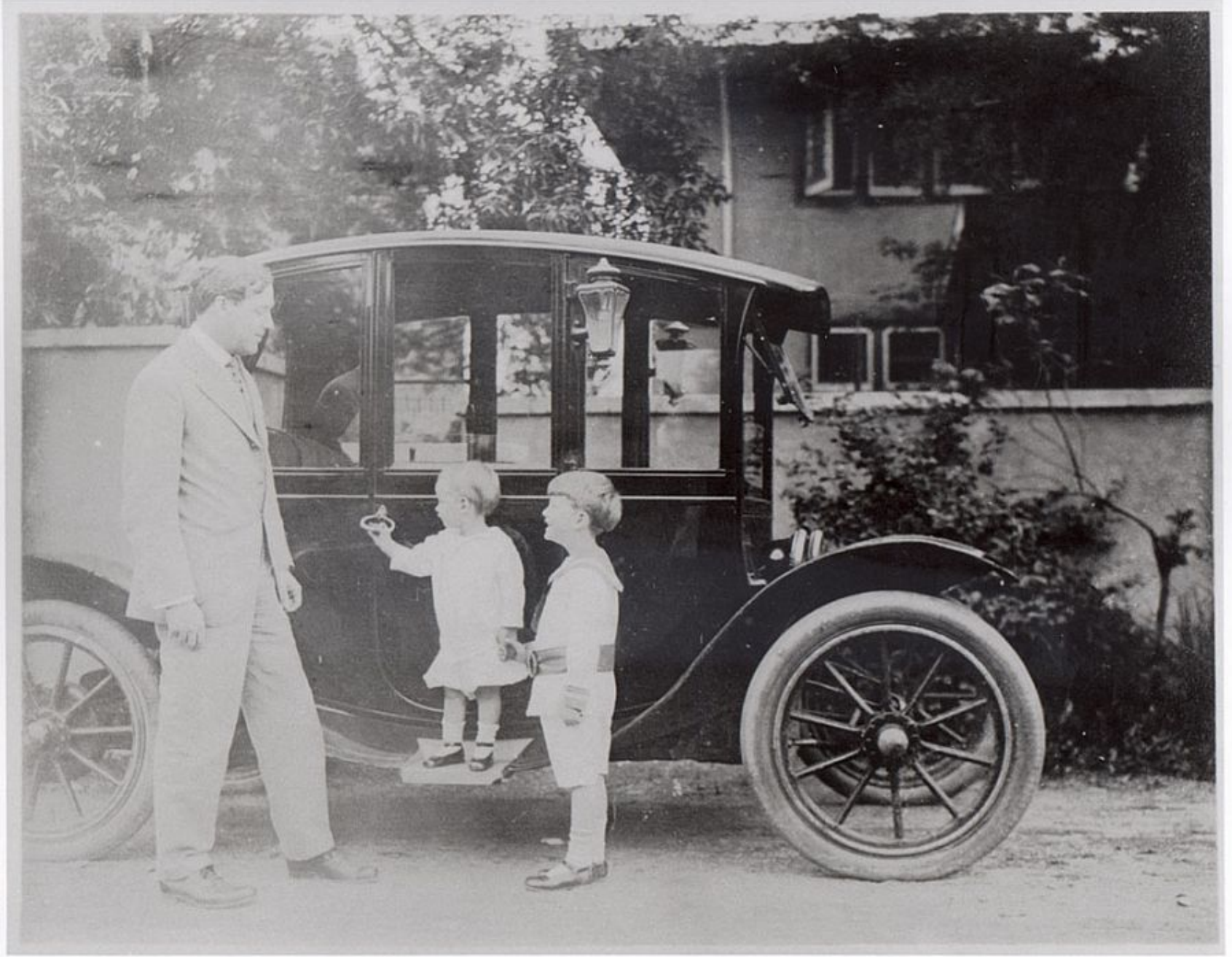


Purcells lived at Lake Place from 1913 – approx. 1918

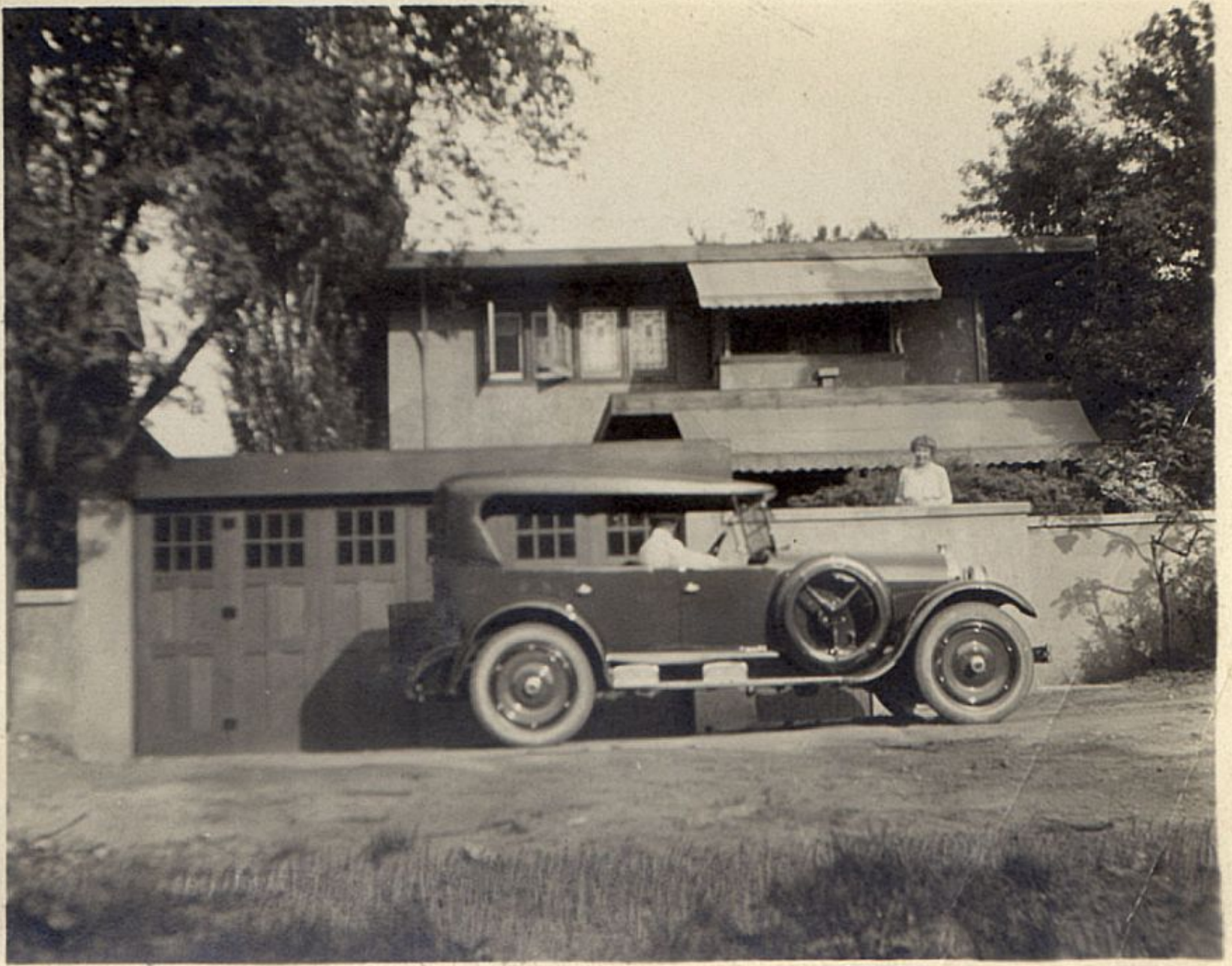


Anson and Edna Cutts, 1940s





Minneapolis Institute of Art



Minneapolis Institute of Art



Anson Cutts, Jr., 1930s



Bob Mack and Stu MacDonald of MacDonald and Mack, architects

Purcell-Cutts House

Recent Conservation Projects

Window Conservation, 2016

- **Minnesota Legacy Amendment grant funding**
- **Six windows and sashes conserved along with sashes of two other windows**
- **One other window conserved at the same time**
- **All were from second floor of the house**
- **Windows were regouted and cleaned by conservators at MACC under supervision of Drew Anderson, window conservator at Metropolitan Museum of Art**
- **Sashes conserved by Nick Doyle of Chiral Arts LLC, St. Paul under supervision of Stu MacDonald**







Purcell-Cutts House

Recent Conservation Projects

Exterior Woodwork conservation, 2018-2019

- **Restores woodwork to original jin-di-sugi treatment**
- **Produces a finish that is true to the architect's original conception and reduces future maintenance**
- **Exterior cypress and spruce wood trim stripped of opaque stain by brushing with a non-metallic brush to remove dirt and any loose stain**
- **It was lightly rubbed to remove the opaque stain from the high grain**
- **The water repellent preservative will then be applied, allowed to penetrate, and the excess will be wiped away**
- **High and low grain will be more distinct with this treatment, unlike with opaque stain**

Front door area with
opaque stain removed

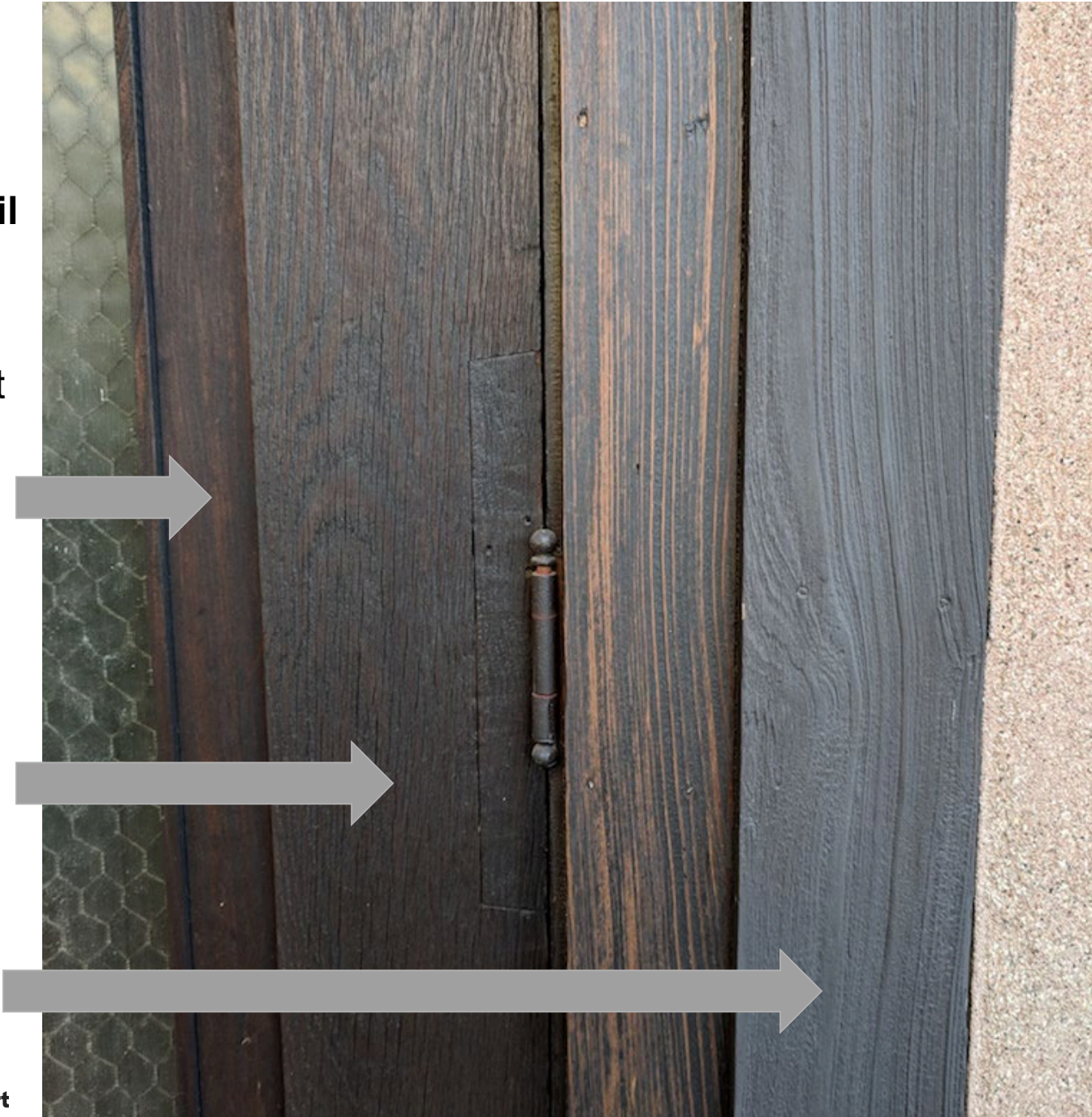


**Side door
Woodwork detail**

Storm door insert
With original
jin-di-sugi
treatment

Door conserved
as part of window
project

Opaque stain





How to visit

- **Public tours 2nd weekend of each month**
- **Call Mia at 612-870-6323 for reservations**
- **<https://tickets.artsmia.org/products/purcell-cutts-tour>**
- **Winterlights Holiday tours 6 weekends between Thanksgiving and New Year's**
- **Private tours by appointment through Mia Tour Scheduling office**
- **Virtual tour on Unified Vision Web site**
www.artsmia.org/unified-vision

Minneapolis Institute of Art

Purcell-Cutts House Winterlights Tours

Mia



Purcell-Cutts House, 2328 Lake Place, Minneapolis, 1913

Minneapolis Institute of Art

Purcell-Cutts House tour emphasis

- **A “Progressive” Christmas in line with Purcell’s values**
- **Look at social traditions, food, and gifts c. 1915, based on how the Purcells may have celebrated**
- **Move away from machine-made, Victorian-era “gimcracks” to handmade, useful gifts that emphasize simplicity and function**
- **Discussion of the role of domestic help at Christmas in an upper-middle-class household**



William, Edna, James, and Douglas Purcell, c. 1916



Catherine Gray



Catherine Gray House, 2409 E. Lake of the Isles Parkway, c. 1908

Minneapolis Institute of Art



Minneapolis Institute of Art Family gathering at Catherine Gray house , c. 1908

Decorations

Mia



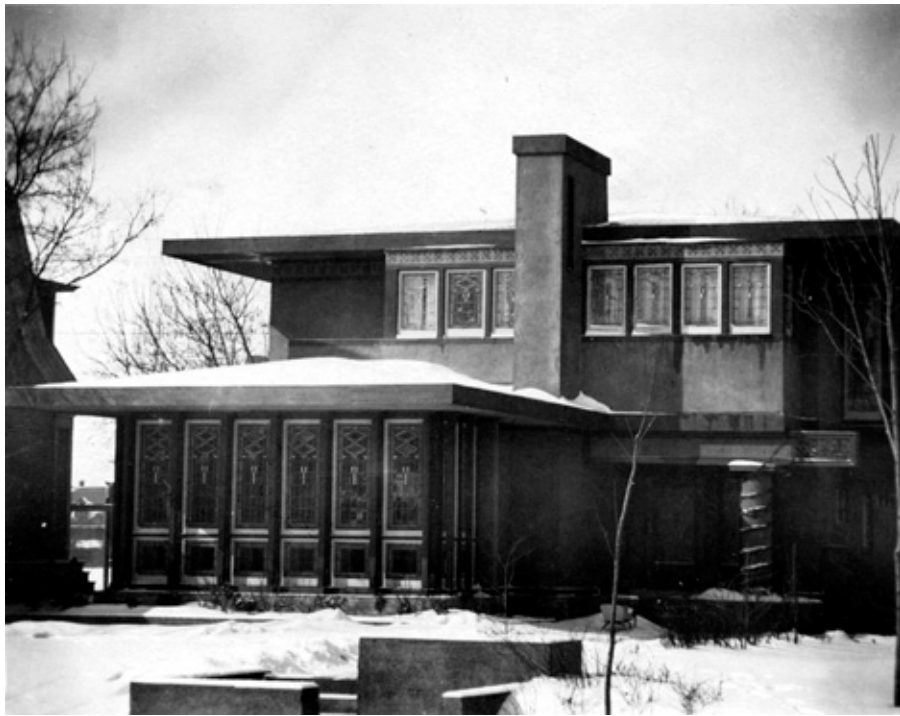
Holiday decorations at Catherine Gray house, n.d.



Edna, Catherine Gray, and Annie Ziegler decorating
Catherine Gray house, c. 1908



Edna S. Purcell (Purcell-Cutts) House in winter, c. 1914



Minneapolis Institute of Art



Minneapolis Institute of Art

Minneapolis, Minnesota,
January 4th, 1915.

Charles W. Sexton Company,
Phoenix Building,
Minneapolis.

Gentlemen:- We have had a small fire at my dwelling,
2328 Lake Place, which I brought to the attention of your
Mr. Hauschild, and following his suggestion, I hand you
herewith my estimate of the damage:

One Living Room Rug, 10'06" x 25'-6", from G. F. Weber Studios.....	\$187.00
Damage to floor.....	5.00
1 Copy Galeworthy's Plays.....	1.50
1 Ladies suit (damaged in trying to put out fire with skirt).....	75.00
1 Watch in pocket of Ladies skirt.....	5.00
1 Gentleman's suit (damaged in trying to put out fire).....	10.00
Decorations for Christmas tree.....	5.00
	<u>\$288.50</u>

Yours very truly,





Purcell-Cutts House,
Living room



Minneapolis Institute of Art

Gifts

Mia



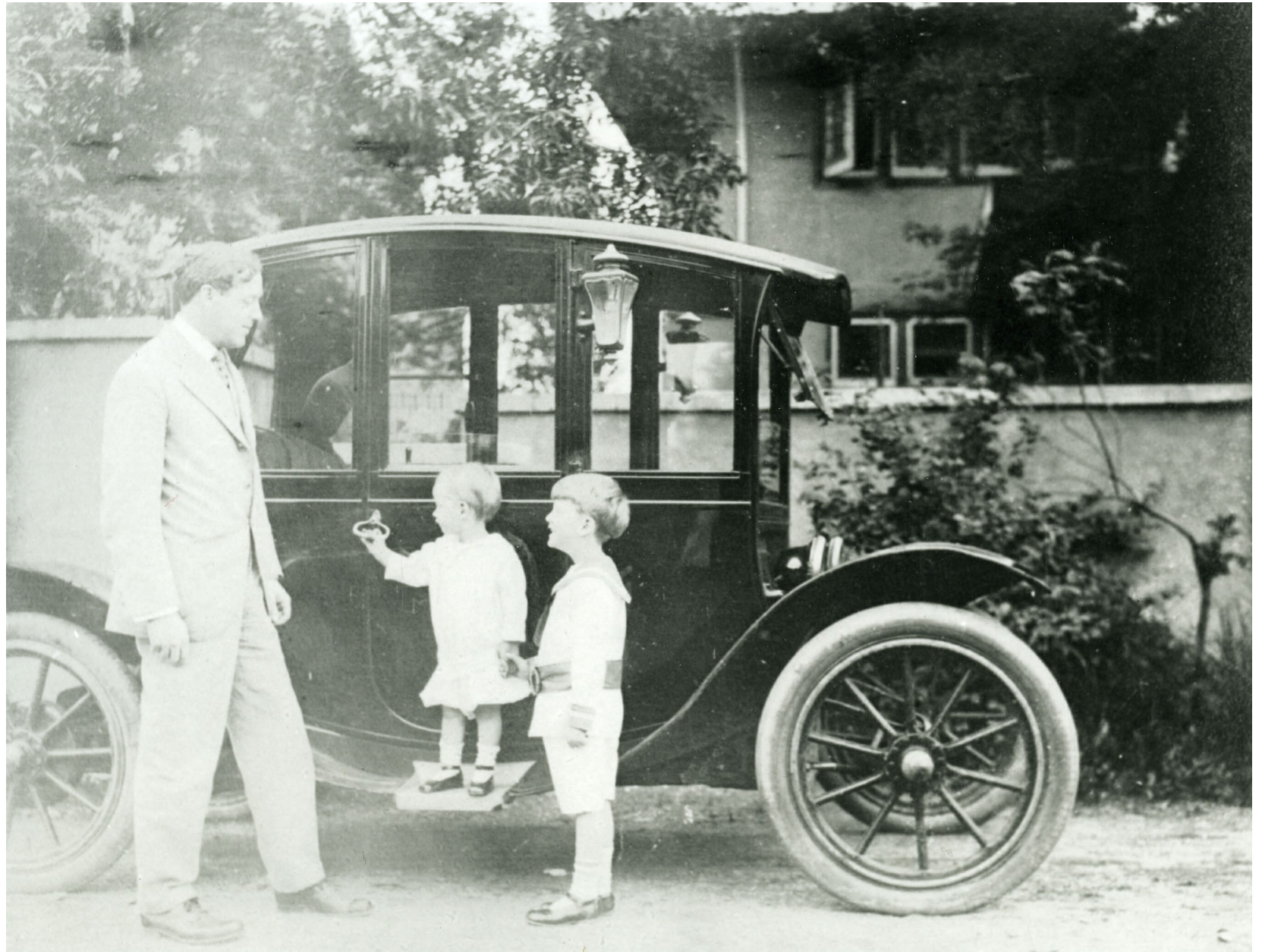
Christmas gathering, probably Charles Purcell House,
River Forest, IL, c. 1910, showing presents



William and Edna Purcell's wedding gifts, Dec. 1908



Minneapolis Institute of Art



Minneapolis Institute of Art



Minneapolis Institute of Art



Minneapolis Institute of Art



Handicraft Guild of Minneapolis, 89 S. 10th St., Mpls

Minneapolis Institute of Art



Handicraft Guild of Minneapolis shop, c. 1910-15



Handicraft Guild of Minneapolis
covered jar and nut spoon,
c. 1915, MIA collection

Minneapolis Institute of Art





Minneapolis Institute of Art



JAPANESE GARDEN SHOWING OLD BRIDGE FROM A GARDEN IN JAPAN
AFTERWARDS AT WORLD'S FAIR

Hand Instead of Machine

IN these days of a surfeit of machine-made everything, the demand is constantly increasing for articles that bear the stamp of individuality, rather than the label of the factory; thus the circle of those who appreciate the work of such shops as Bradstreet's widens as the artistic sense develops.

Bradstreet's has become the mecca of all such lovers of art, whether they come from the great cities of the east or the small towns of the west, and it is one of the important sights for Minneapolis visitors.

Bradstreet's Craftshouse brochure, 1905, touting objects
made by "Hand Instead of Machine"



A warm and friendly word of cheer

for Christmas and the coming year

Edna and Arson Cutto

Winterlights at the Purcell-Cutts House

- **Tours on weekends from November 24 – December 30**
- **Free for Mia members, ticket required**
- **Non-member adults \$5, students/seniors \$4**
- **Free for children under 12**
- **Forty-five minute tours led by costumed docents**
- **Reservations available online at www.artsmia.org , at Visitor Experience desks, or (612) 870-3000**
- **Visitors must use the shuttle bus from Mia to the House, which runs Saturdays from 10 a.m. until 5 p.m. and Sundays from 12 noon until 5 p.m. We are using Lorenz Bus Service for shuttle bus service.**