

Minneapolis Institute of Art

Art Adventure Guide

December 4, 2018

Brown Bag

Mia

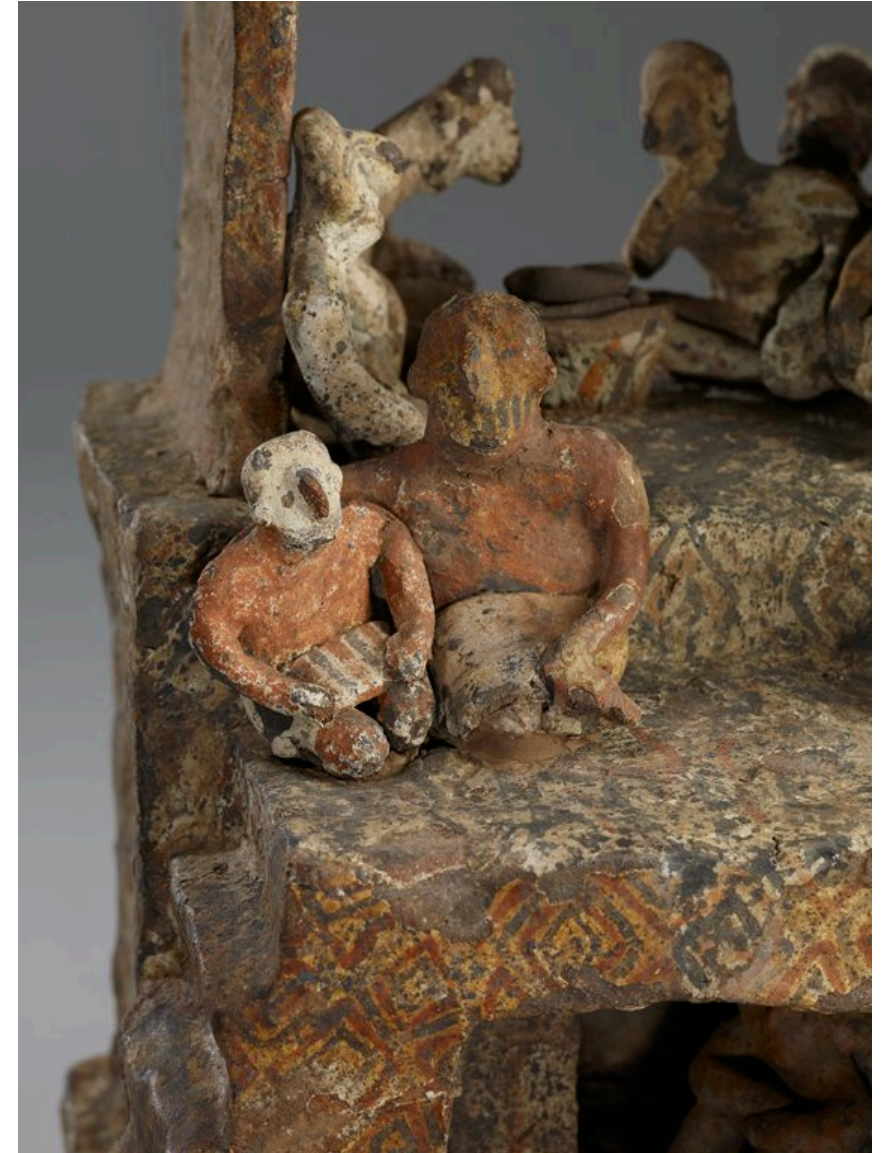
Challenges for Family, Friends, and Communities

- Be cautious of assumptions and triggers in questions. We should not assume children have a safe and secure home and family life.
- Focus on the aspect of human relationships in this theme rather than asking for definitions of family, size or makeup of families, or how your family makes you feel.

Questions:

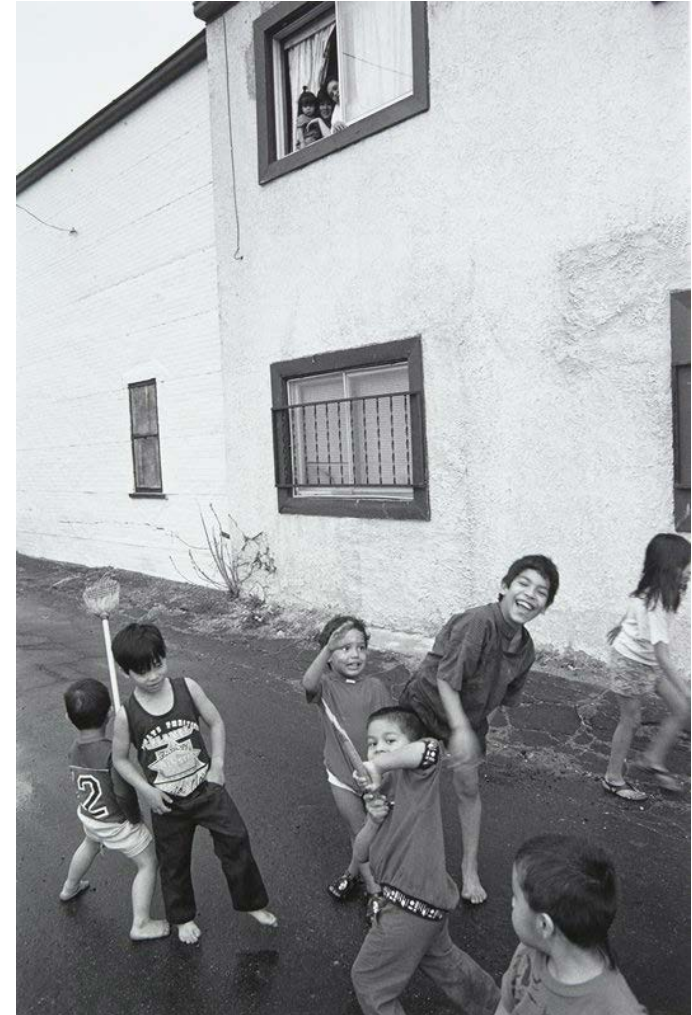
Why are friends important in our lives?

What kind of communities are you part of?



Challenges with American Stories

- Focus on commonalities rather than diversity when talking about people in your group
- Diversity is built in the objects
- Do reference the United States of America periodically
- Focus on the stories





Minnesota schools struggle with widening racial gap between students and teachers

Number of teachers of color is stuck at 5 percent as state's diversity explodes.

Story by Faiza Mahamud and MaryJo Webster • Star Tribune 12/3/18

Student-Teacher racial mismatch in Minnesota

The share of students of color in Minnesota's public schools has been rapidly growing, while the share of teachers of color has remained stagnant.

Percentage of teachers and students of color



*Combines part-time and full-time teachers
Source: Minnesota Department of Education and the Minnesota Professional Educator Licensing and Standards Board

About 34 percent of K-12 students in the state are nonwhite, while teachers of color make up only 5 percent of part-time and full-time teachers, the Star Tribune analysis found.

In Minneapolis Public Schools currently, 65 percent of the district's elementary school students are kids of color.

Gallery Communication



Thomas Struth,
Audience 1 (Galleria Dell
Accademia), Florenz, 2004

Save the Date

Monday, May 6, 2019

Art Adventure Guide Spring Luncheon

American Swedish Institute

