

# Art in Bloom 2019

People and Their Environments  
Art Adventure Guide Training  
February 13, 2019

“Art that reveals some aspect of their creator’s relationship with the natural and built environment...introducing us to various facets of our place in the world.”

Mia

Think of the word “garden” and get a picture or sound or smell in your mind.

Now take a moment to look at this Chinese garden. What’s similar to the image in your mind? What’s different?



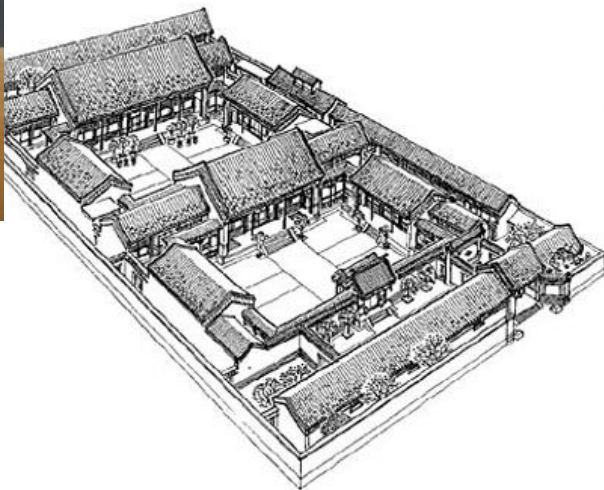
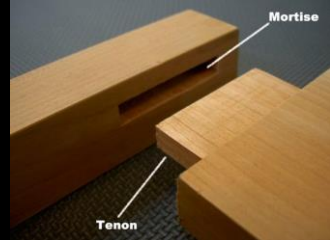
China, Jiangsu Province, *Rock garden*, 1700s



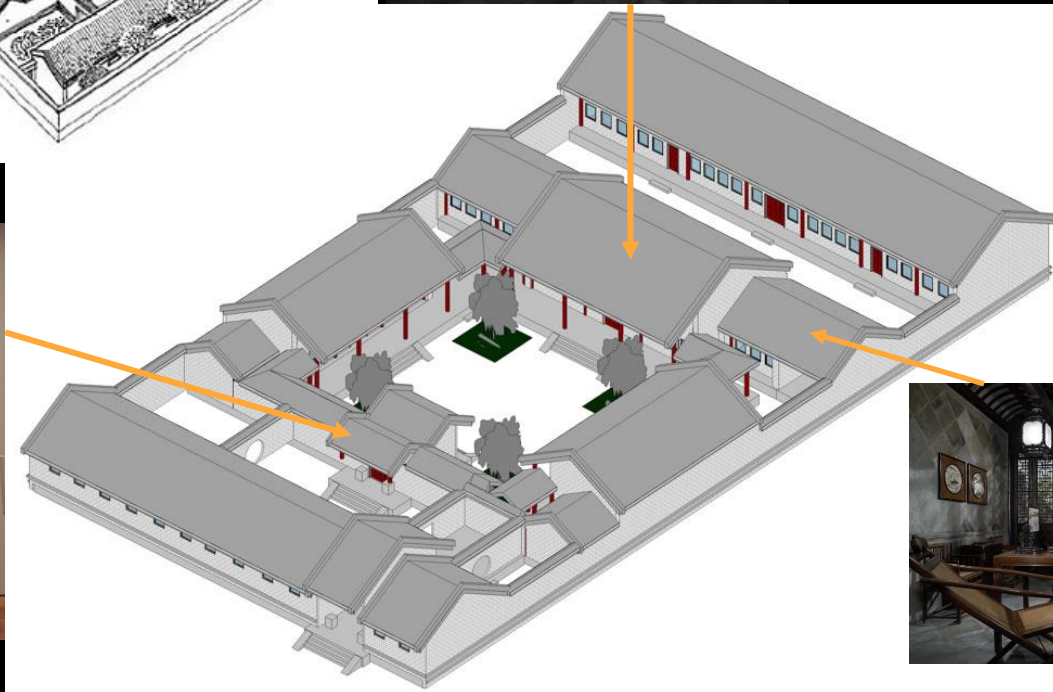
“Another character thought to express longevity is wan which means “ten thousand.” This character is often represented stylistically as a backwards swastika....”

<https://depts.washington.edu/chinaciv/>





Courtyard-style house  
Mia's rooms and gate were purchased in China in 1996.





Depicted on the top register are the four noble agrarian professions: scholar-official, farmer, woodcutter, and fisherman. (Ceremonial Gate, 1728)



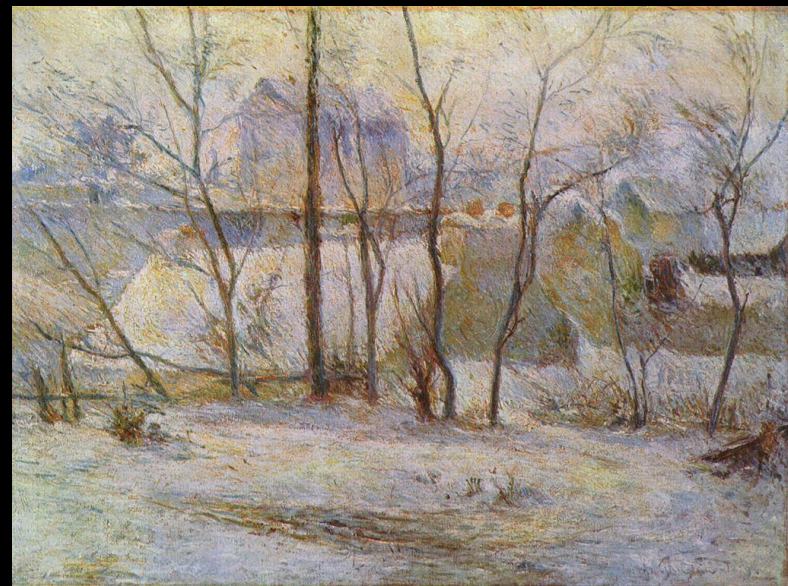
# China, Garden Design

The literati followed both Confucian (public life) and Daoist (private life) teachings.

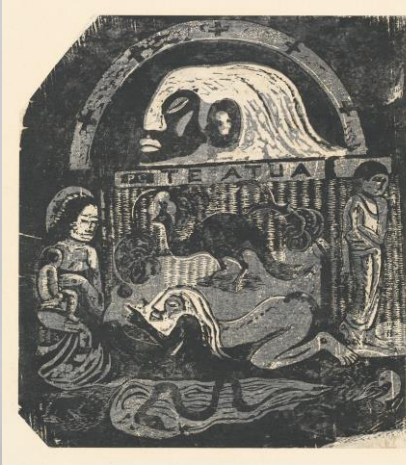




Paul Gauguin (1848-1903), *The Market Gardens of Vaugirard* and *Winter Landscape*, 1879 (Photo of Mette and Paul Gauguin, 1885). In 1873, Gauguin married Mette and began painting in his free time, eventually exhibiting with the Impressionists.



Gauguin had no formal artistic training. *Portrait of Emile*, 1877-78; *Valérie Roumi*, 1880; *Vessel*, 1887-88; *Te atua (The Gods)* from the Volland Suite, 1899; *Two Standing Tahitian Women*, 1894.





Paul Gauguin, France, *Tahitian Landscape*, 1891 (Photo: Louis Maurice Boutet de Monvel, Portrait of Gauguin in Breton costume, 1891)



Symbolism, an artistic and literary movement that championed pure subjectivity and the expression of an idea over a realistic description of the natural world.(famsf.org)

Paul Gauguin, France, *I Raro Te Oviri*  
(*Under the Pandanus*), 1891 (Possible  
photos of Gauguin in Tahiti, July 1896)



Berenice Abbott, United States, *New York at Night*, 1934, gelatin silver print (printed 1982)

- What are one or two words you would use to describe this picture of the city?
- How do you think she took this photograph?
- Why do you think she took the photo at night, rather than in the afternoon?
- If you took a photo of the city or place you live, what would you show?



# Berenice Abbott



Completed in 1931, the [Empire State Building](#) has a roof height of 1,250 feet and stands a total of 1,454 feet tall, including its antenna.



I like this picture so well because it re-creates for me some of the feeling I got from the original scene—and that is the real test of any picture.—BA

It's twilight in late December 1932. Thousands of streetlights and office windows blaze in electrified concert for a scant half hour between the winter-solstice sunset and the lights-out, five o'clock end of the office workers' day.

(W.W. Norton UK)





## Ideas for substitutes for Route 1 and Route 2?

Remember to first look at the route, on where you will be and where you need to go next. Next, keep the theme in mind as you select an object.

# Ideas for substitutes for Route 1 and Route 2?



Remember to first look at the route, on where you will be and where you need to go next. Next, keep the theme in mind as you select an object.

<http://ipevolunteers.org/objectfiles/programs/aag/aag-sets/people-and-their-environments/>

Anishinaabe (Ojibwe) or Nēhiyawak (Cree), United States/  
North America, *Moccasins*, 1890–1910 (Hide, silk, cotton, and  
beads)

These are slipper  
style moccasins.

Nēhiyawak:

- Red band

Nēhiyawak and

Anishinaabe:

- Pointed toe
- Metallic beading
- Floral patterns



The style and decoration of each people's moccasin reflects cultural beliefs and values as well as the weather, terrain of the countryside, and resources available from the environment.





Questions you might use?  
Descriptive, Interpretive, Associative?



Canaletto (Giovanni Antonio Canal), Italy, *The Grand Canal in Venice from Palazzo Flangini to Campo San Marcuola*, 1740

Look at the boats in this scene.  
Which one would you want to be on?  
Why?  
What is realistic about this painting?



Jean Preudhomme, *Portrait of Douglas, 8th Duke of Hamilton, on his Grand Tour with his physician and the latter's son. A view of Geneva is in the distance where they stayed for two years, 1774.* (Wikipedia) Canaletto was a veduta painter, a “view” painter.



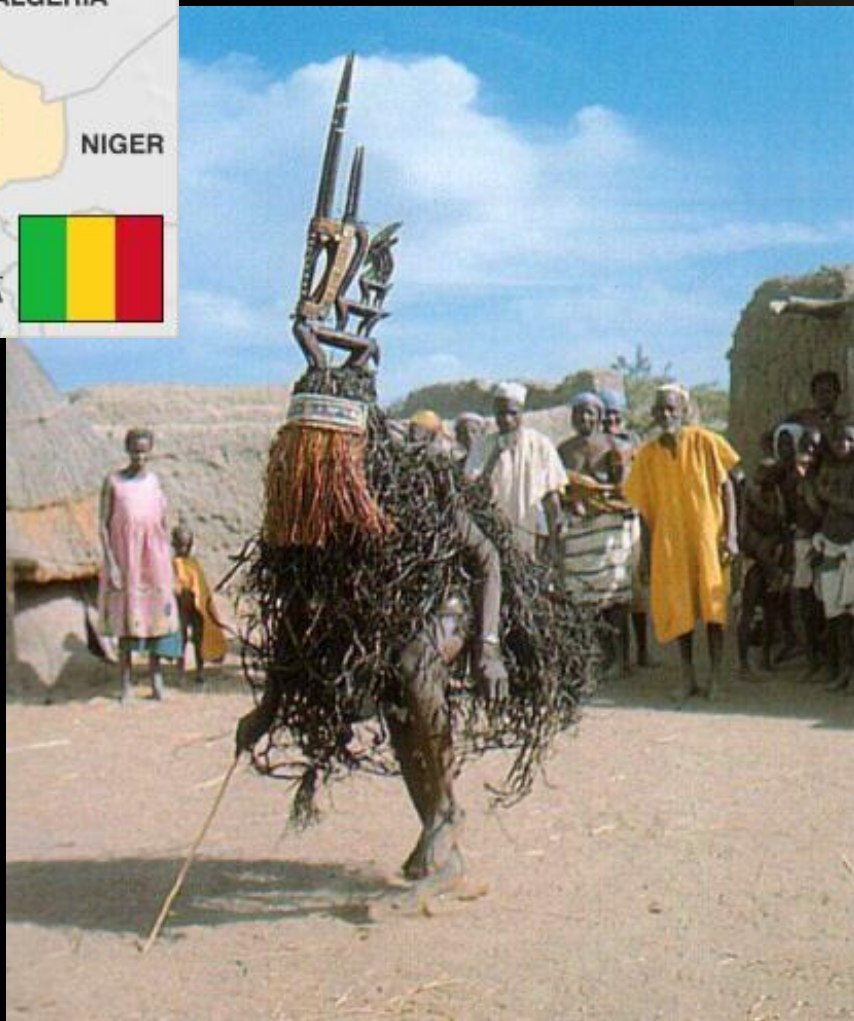


Canaletto (Giovanni Antonio Canal), Italy, *The Grand Canal in Venice from Palazzo Flangini to Campo San Marcuola*, 1738 AND 1740





Bamana, Mali,  
*Tyiwara*  
headcrest,  
20th century



A successful farmer is respected. The *Chi Wara Ton Society* gathers all young adult males to work the fields at clearing, sowing and harvest, when the greatest number of laborers is needed. Teachings of the chi wara ton pass on the needed skills for this work, upon which the very survival of the community depends.



The Bougouni / Southern region style are an amalgam of several animal motifs combined in the same work, in an abstract style.

(Wikipedia)



Crests are attached to wicker caps and worn atop the head, along with a full costume made of raffia that represents water. The dancers make leaping and ground-pawing motions in imitation of antelope. The male chi-wara have curved horns and open-work designs. The female have straight horns and carry a baby antelope on their back.

(Museum of Art and Archaeology, University of Missouri)



Questions?

