

Minneapolis Institute of Art

Art Adventure Guide Brown Bag September 17, 2019



Mia

Agenda

Meet your Art Adventure Guide Council

Amanda Lesnikowski, School and Teacher Programs
(STP)

Ann, Cultural Reflections key ideas and inquiry

Kara, Cultural Reflections substitutes

Art Adventure Guide Council

Loreen Fripp - Chair

Nancy McCrae

Barb Mikelson

Laura Miller

Monica Stuart



Locations and Routes

Off-view:

1. Mill Pond (AS)
2. Frank (CRA)
3. Rainy Evening (HPL)

The winter count and Lakota dress are on view! Both are in G261.

- The winter count (American Stories) and Lakota dress (Let's Celebrate) are side by side in the case. Please share the space when touring or training.

New Key Ideas and Questions

- Available on the IPEvolunteers.org site
 - AAG
 - Forms and Procedures

Cultural Reflections in Art

Key ideas and inquiry for presenting in the classroom may be different from presenting in the galleries.

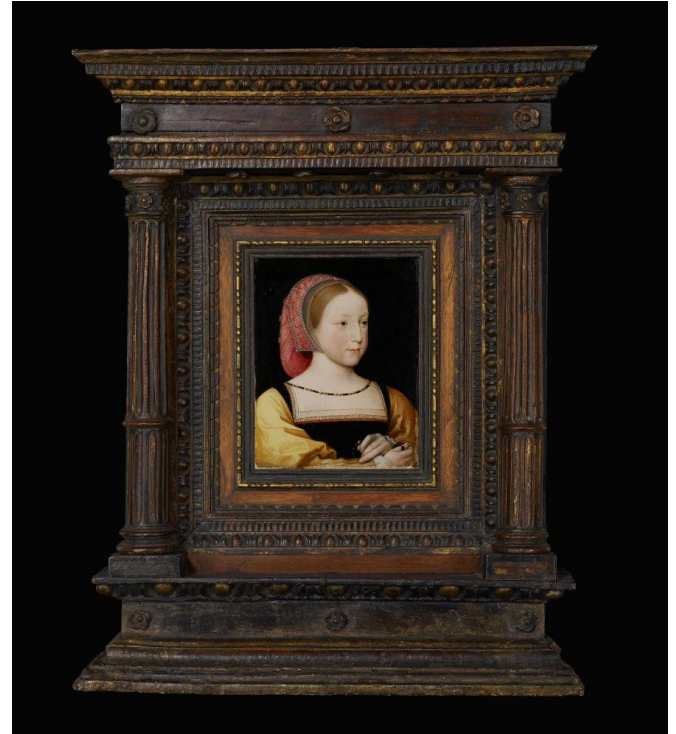
- Size and viewability will make a difference
- Compare and contrast will be easier in the galleries
- Follow-up questions
- Context
- The entire museum!

Key Ideas

In France in the 1500s, Princess Charlotte, age 6 or 7, was expected to behave and dress like an adult.

Charlotte, is dressed in very fine clothes, as depicted in great detail by the artist Jean Clouet the Younger.

This portrait of Charlotte is very small in size and likely meant for public display, but rather for personal use.



Jean Clouet the Younger, *Portrait of Charlotte of France*, 1522, oil on cradled panel 33.7.98

Props: Samples of velvet
and silk

Questions:



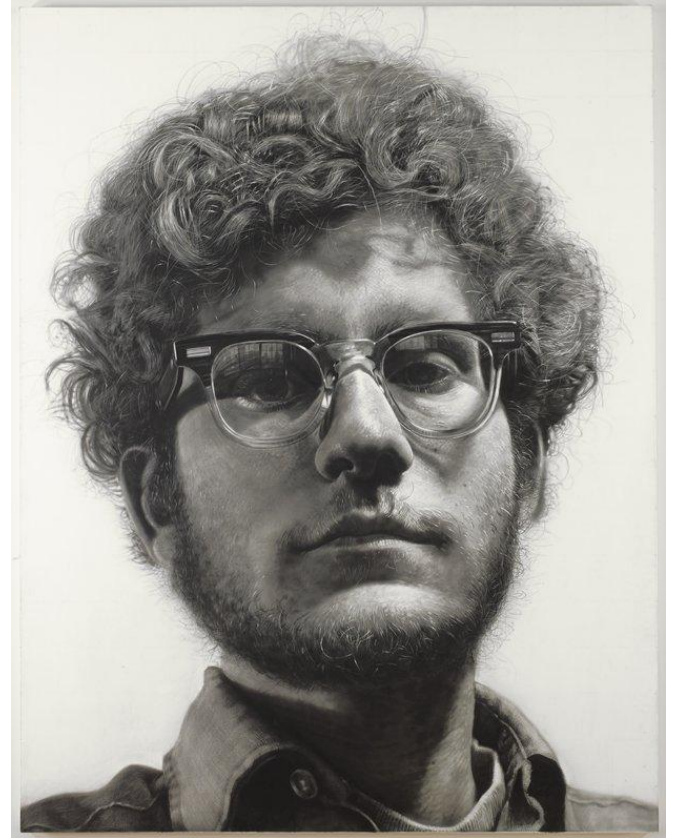
Key Ideas

Although it looks like a photograph, this is a painting, created with an airbrush using only 2 tablespoons of black acrylic paint.

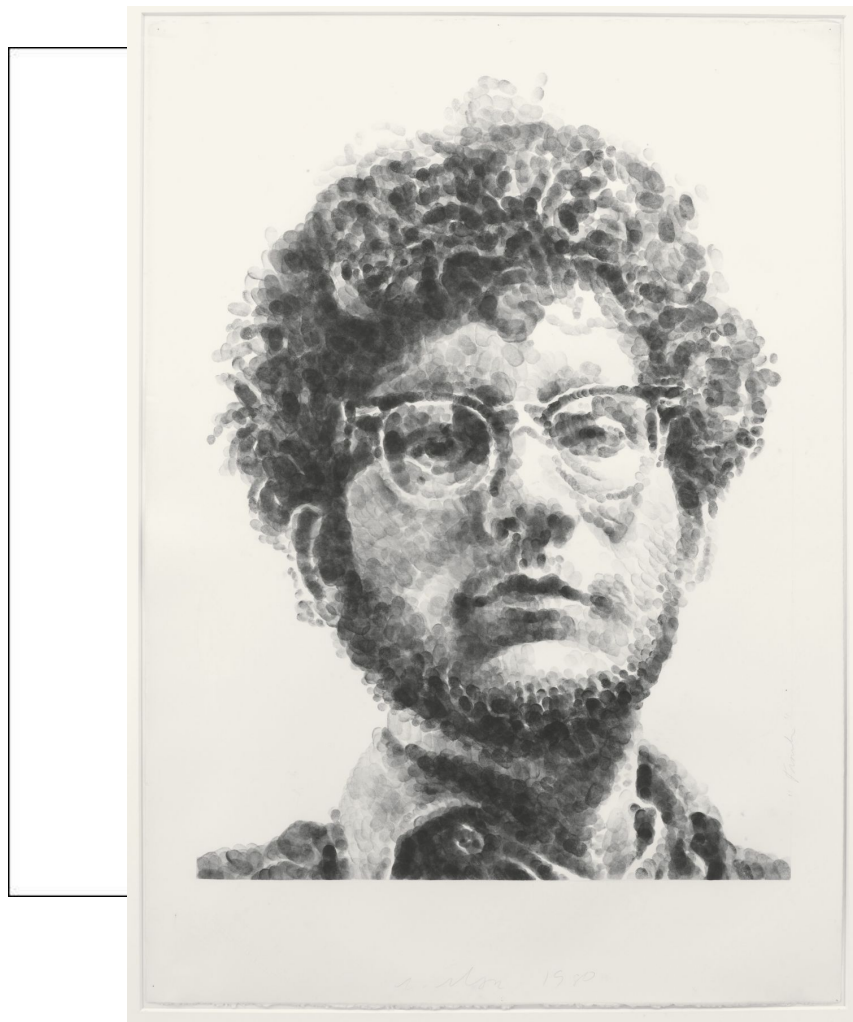
Chuck Close painted this portrait of Frank from a photograph, emphasizing details over personality.

This large painting, 9 by 7 feet, was created with the use of a grid system.

Chuck Close challenged with both learning and physical disabilities pushed himself to paint in new ways.

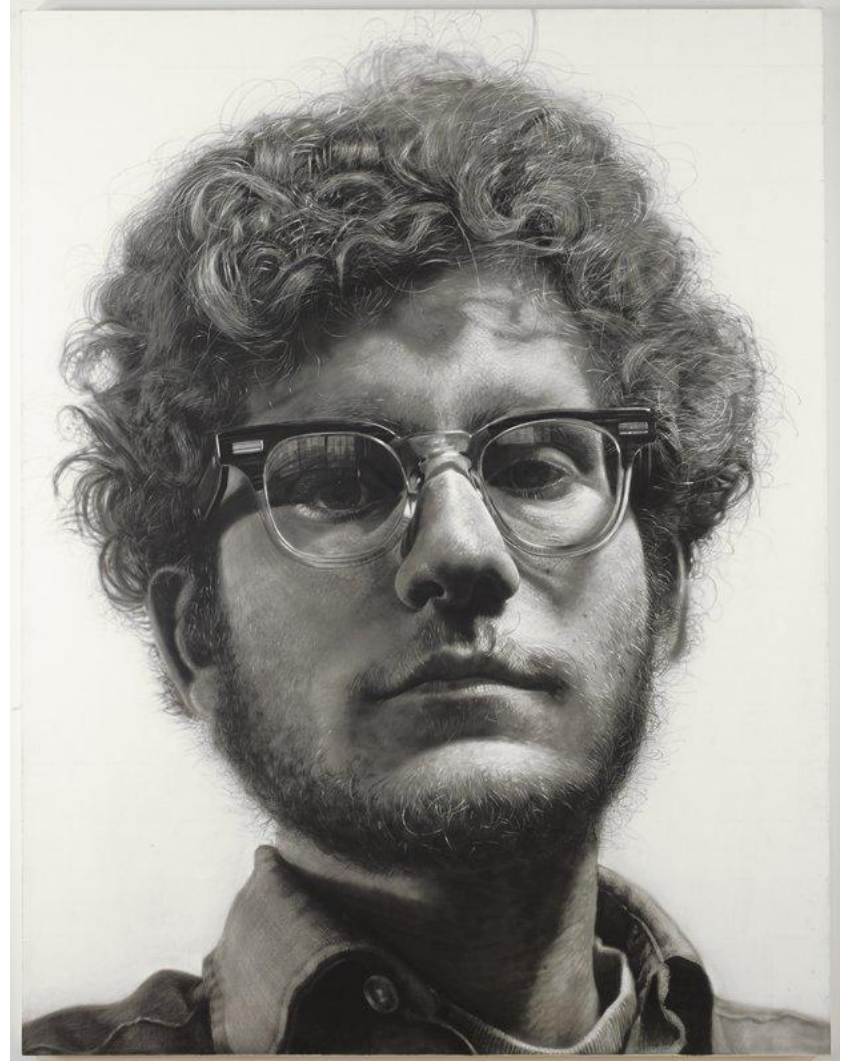


Chuck Close, *Frank*, 1969, acrylic on canvas, 69.137



Props: Photograph of Frank
with grid, proportionate
enlargement, photo of man
in front of frank

Questions:



Key Ideas

This power figure, is used to maintain the well-being of a Kongo community by resolving conflict and sealing agreements.

The nail figures are known as *nkisi nkondi*, *nkisi* = spiritual charm, *nkondi* = to hunt.

Each of nails, blades and screws driven into this figure represents a judicial action.

The figure's spiritual power is invoked by a ritual specialist who places special substances in the container on the figure's stomach.



Kongo, Democratic Republic of Congo,
Power Figure, 20th century, wood, natural
fibers, glass, metal, undetermined materials
71.3

Democratic Republic of Congo DRC



No props

Questions:

Even though this figure is small,
how do you think it shows
power?



Key Ideas

A nobleman or high-ranking Chimú man would have worn these ear spools as a sign of his status.

It is believed that the ear spools provided protection from evil spirits.

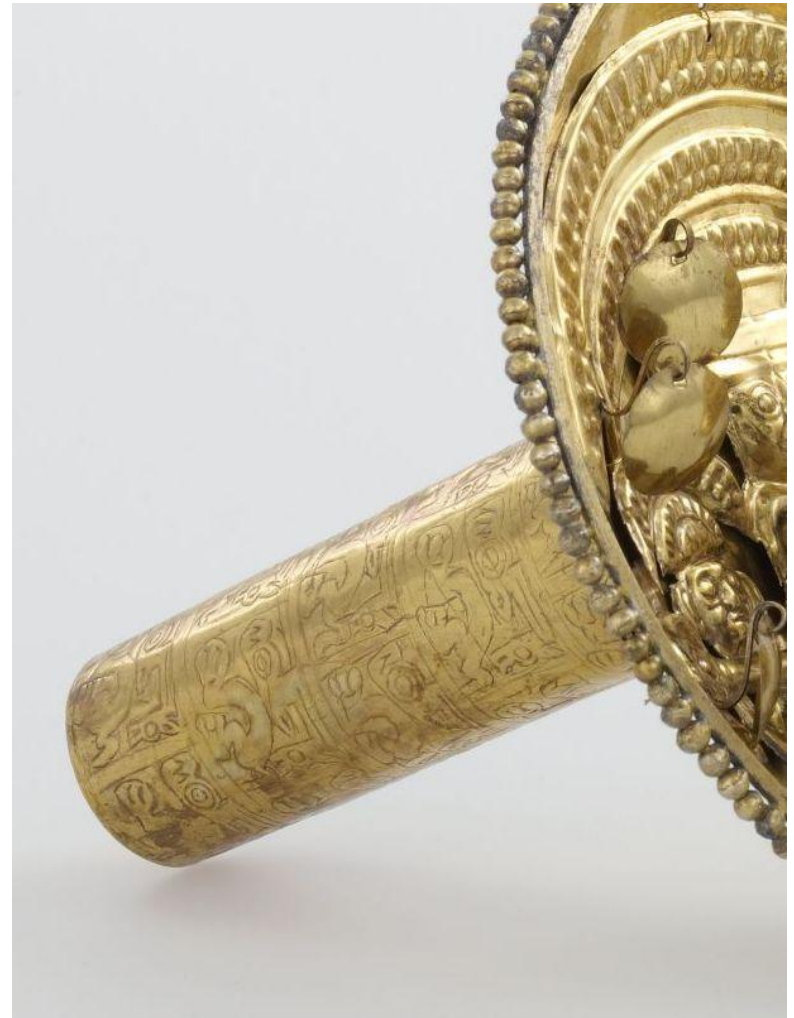
The ear spools are decorated with mythical figures indicating a belief in supernatural forces.

The technique of making these ear spools is very sophisticated despite being made around 1000 years ago.



Chimú, Peru, South America, Ear Spools,
1150-1450, gold alloy, 43.4.1

Kero
Litter



Props: scale model of ear spool, photograph for scale

Questions:

These ear spools were made for a high-ranking member of the Chimu people to be worn during special occasions. What about these ear spools appears to be special?



Key Ideas

Clementine Hunter was a self-taught artist who created a visual record of her life on Melrose plantation.

Hunter painted colorful scenes from everyday life.

This scene depicts 3 women doing laundry at a time when clothes were still boiled and scrubbed by hand.



Clementine Hunter, United States, *The Wash*, 1950s, oil on board 91.88.2

Props: sample of oil painting on masonite, photograph of the African House, photograph of Hunter

Questions:



Clementine Hunter, United States, *Picking Cotton*, 1950s, oil on board 91.88.1



Key Ideas

Money Trees were highly prized tomb objects believed to grant wishes and prosperity to the tomb's occupant.

This was made during the eastern Han Dynasty in China, 15-200 CE.

At this time, furnishings and sculptures were put into the tomb for the deceased to enjoy in the afterlife.

The money tree's branches are full of images of paradise and coins providing wealth and well-being for eternity.



China, Money Tree, 1st-2nd century, bronze and green glazed earthenware, 2002.47.a-rr



Xi Wangmu (She-wong-moo) Queen Mother of the West

Props: detail of money tree,
photograph of gold coin

Questions:



Substitutes

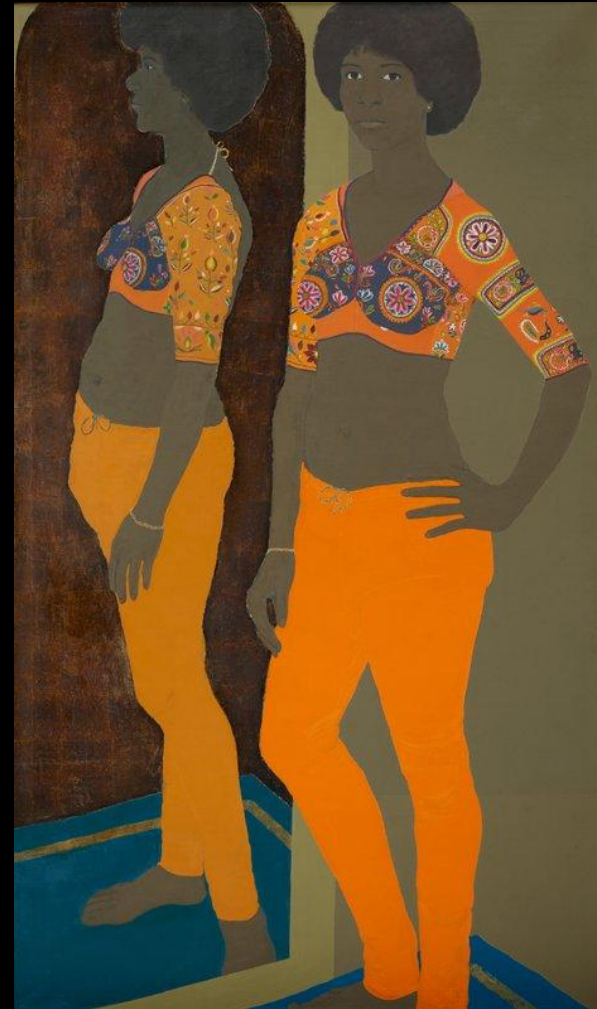
Subs are great opportunities to engage in fresh conversations and observations with the students as well as expose them to more of Mia's collection.

Period rooms make great subs, especially for this set...



Substitutes

Look at the “Cultural Clues” section at the end of the booklet. Consider focusing on materials, technique, size, function, appearance, or effect to help students explore the work of art and interpret aspects of its culture. With such a broad theme, many objects work as great substitutes!



Substitutes

Always consider your assigned route when selecting a sub:

Route 1

260
250
201
SUB
342
SUB

Route 2

SUB
342
SUB
201
250
260

Route 3

201
SUB
342
SUB
260
250

Route 4

250
260
SUB
342
SUB
201

Select works that keep you on track to get to your next object.

Ideas for substitutes...second floor

Tsistsistas (Cheyenne) or
Lakǰóta, Headdress, late
19th-early 20th century



Unknown artist, China,
Bride from , *Wedding
Procession*,
1368-1644



Unknown artist, Jap
*A Show of
Horsemanship*,
second half 17th
century.

Unknown
artist, Ancient
Egyptian,
Lady Tashat,
945-712 BCE



Ideas for substitutes...third floor



Jacopo da Ponte
(Jacopo Bassano), *The
Element of Water*, c.
1576-1577; Pieter de
Hooch, *The Asparagus
Vendor*, 1675-80



In G359: Vincent D. Smith,
Basketball Players, 1965; Ralph
Fasanella, *Street of Dreams
(Broadway and Times Square)*,
1993; Jacob Lawrence, *Subway
Acrobats*, 1959.



What artworks have you used as subs in this set?