

Minneapolis Institute of Art

Art Adventure Guide Brown Bag

October 16, 2019



Mia

Today's Agenda

Mia Updates

Updates from Amanda

Review of Artists' Inspirations

Welcome Dr. Katherine Crawford Luber



Updates from Amanda

1. Locations and routes
2. S/SE Asia gallery rotation
3. Writing Desk
4. Volunteering outside of Mia

Art Adventure Guide Out and About



[Homewood Studios](#)

Monday, November 4 at
2:00

2400 Plymouth Ave N, Minneapolis,
MN 55411

Parking is on the street and is free.

Space is limited, RSVP by Friday, Nov. 1

RSVP to barbm2016@gmail.com

Artists' Inspirations

<https://ipevolunteers.org/>



Key Ideas

Inspired by nature, Jade Mountain depicts a gathering of scholars at the Orchid Pavilion in China to honor the ancestors and enjoy nature.

Emperor Qianlong, commissioned this jade sculpture to commemorate the event.

Two poems are etched into the jade, one by Wang Xizhi (303-361) and one by emperor Qianlong (r.1736-95).

Jade is considered sacred and treasured in China.



China, *Jade Mountain Illustrating the Gathering of Scholars at the Lanting Pavilion*, 1784, light green jade, 92.103.13





Key Ideas

Inspired by the natural beauty of the Southwestern landscape, Georgia O'Keeffe painted this scene from her home in Albuquerque New Mexico.

The scene is a flat-topped mesa, Pedernal, viewed through an animal's pelvic bone.

O'Keeffe eliminates details to focus on shape and color.



Georgia O'Keeffe, United States, *Pedernal-From the Ranch #1*, 1956, oil on canvas, 64.43.2



Key Ideas

The artists who made this malagan sculpture was inspired by the natural order of earth, air and sea.

Malagan sculptures are part of a Malagan festival to to honor the dead.

The animals on this sculpture represent the social order of New Ireland people who made this.



Papua New Guinea, Pacific Islands, Malagan Frieze, 19th century, wood, pigment, shell, 85.94

Papua New Guinea, New Ireland





Key Ideas

Inspired by nature, and the popularity of group portraiture, Stearns painted this scene of a fishing party off Long Island.

This is a *genre* scene, a scene from everyday life. Fishing was, and remains, a popular activity.

It is also a group portrait, with each of the seven participants placed to be recognized by the viewer.



Junius Brutus Stearns, United States, *A Fishing Party Off Long Island*, 1860, oil on canvas, 78.26

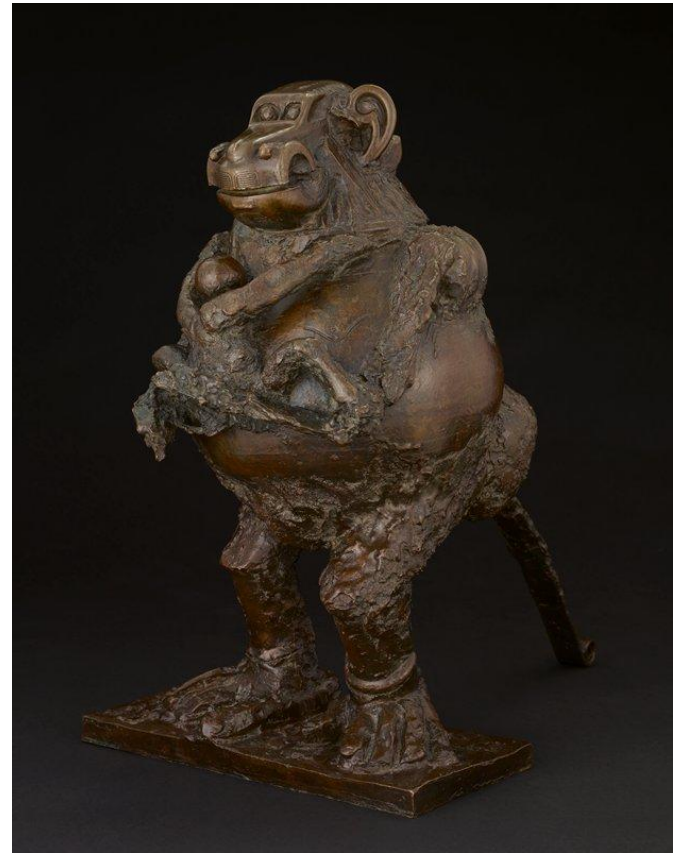


Key Ideas

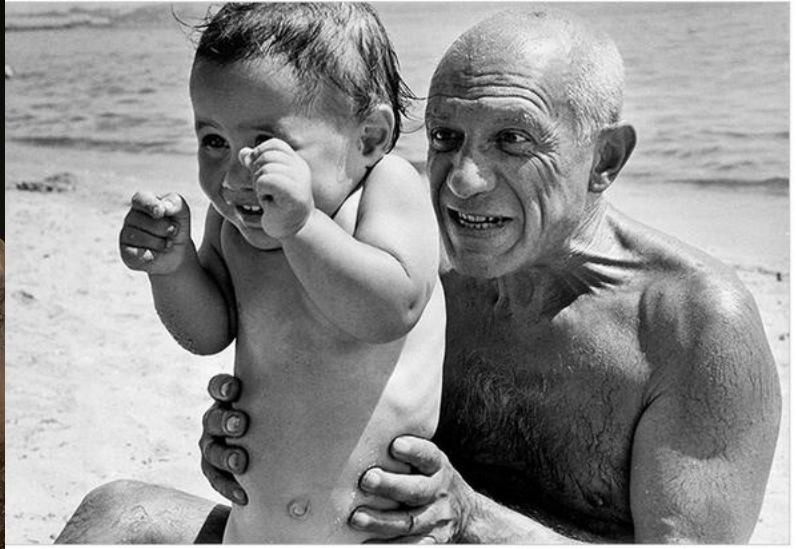
Pablo Picasso's children and his children's toys were inspiration for this sculpture *Baboon and Young*.

Picasso constructed this sculpture from various materials and “found objects” in a process called *assemblage*.

Picasso was very innovative in his approach to art. He pioneered making art from everyday objects put together to make something completely new.



Pablo Picasso, *Baboon and Young*, 1951, bronze, 55.45



Key Ideas

This sculpture by William Edmondson was inspired by his Christian faith and his deep connection to his community.

The ram is a subject from the Bible's Old and New Testaments.

Although self-taught, Edmondson's style was greatly admired in the Art world for its high degree of design.

The figure, likely carved from a discarded curbstone, is confined to the dimensions of the limestone.



William Edmondson, United States, *Ram*, 1938-42, limestone, 2013.56



Substitutes

Subs are great opportunities to engage in fresh conversations and observations with the students as well as expose them to more of Mia's collection.

All artworks in this set are currently on view! If you have to use a sub, always consider your assigned route when selecting it. Select works that keep you on track to get to your next object.

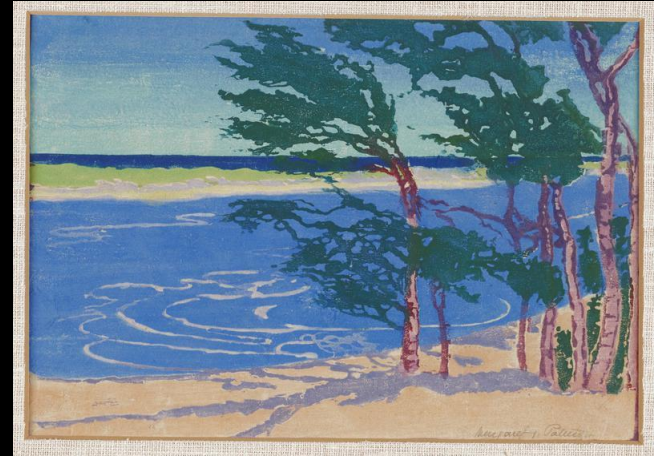
Route 2:

210 **Jade Mountain** / 256 Malagan Frieze / 376 Baboon / 367 Ram / 301 Pedernal / 305 Fishing Party

Substitutes

With such a broad theme, many objects work as great substitutes!

Djunmal, *Bark Painting with Suns, Fish and Plants*, 20th century; George Morrison, *Collage IX: Landscape*, 1974; Margaret Jordan Patterson, *Windblown Trees*, c. 1916-18; Hans Ledwinka, *Tatra T87 four-door sedan*, 1948 (designed 1936)

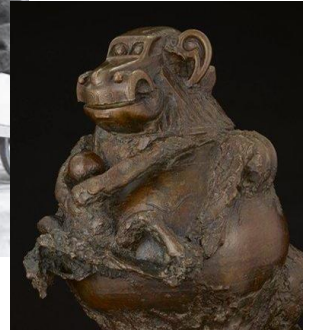
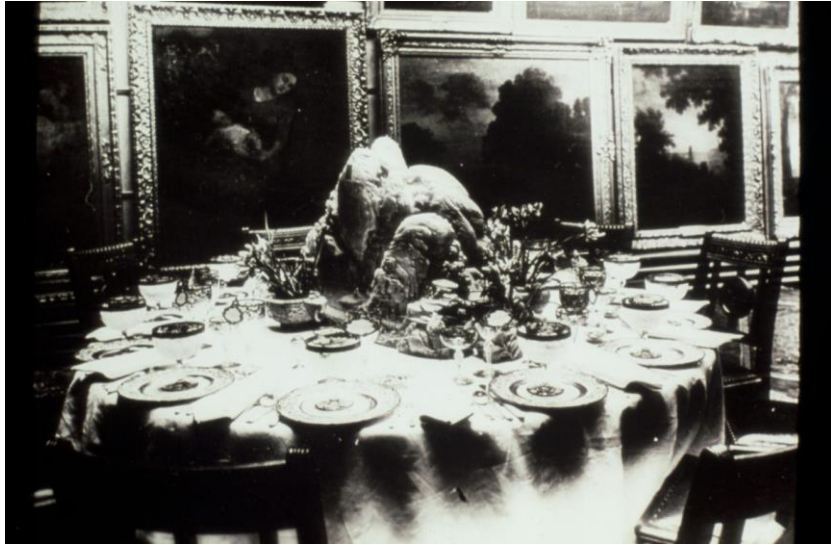


What artworks have you used as subs in this set?

Resources for more information

The resource list will be posted on the IPE site, with the Brown Bag materials.

Mia ArtStory on Jade Mountain: <https://artstories.artsmia.org/#/o/4324>



Next Brown Bag - Tuesday, November 12

Narrated Powerpoint of DFO

Lead Guide Duties

Review of Tour Day Check-in Protocol