

Japanese Art—Exhibition: Abstract Prints by Hagiwara Hideo, Rotation 1, December 14, 2019-June 21, 2020

Contents

G226	Abstract Prints by Hagiwara Hideo
G227	Abstract Prints by Hagiwara Hideo
G237	Abstract Prints by Hagiwara Hideo

Upcoming in Japanese and Korean Art

EXHIBITION

Abstract Prints by Hagiwara Hideo, Rotation 2—Galleries 226, 227, and 237; 6/27/20-12/6/20

EXHIBITION

Tsukioka Yoshitoshi Exhibition—Cargill Gallery 2/1/20-4/12/20

EXHIBITION

Textiles of Japan—Target Gallery 10/3/20-1/3/2021

PERMANENT GALLERY ROTATIONS

Spring 2020—Galleries 251, 252, and 253, 4/27/20

Spring 2020—Galleries 206, 219, 220, 221, 222, 223, 5/10/2020

Japanese Art—Exhibition: Abstract Prints by Hagiwara Hideo, Rotation 1, December 14, 2019-June 21, 2020

Gallery 226: Abstract Prints by Hagiwara Hideo

For over 40 years, Hagiwara Hideo (1913–2007) was a constant innovator in the area of printmaking, from his choice of subjects, motifs, and styles to his techniques. His adoption of abstraction made his reputation in Japan and beyond. He first studied oil painting after high school, eventually graduating from the Tokyo School of Fine Arts, but his artistic career was put on hold when he was drafted into the Japanese army in 1943. After several severe health issues and contracting tuberculosis, he began a rehabilitation program in late 1953, part of which included training in woodblock printmaking. Three years later he received a solo gallery exhibition and was accepted into the annual exhibition of the Japan Print Association. Hagiwara never considered himself a print artist but strove to create visual depth of space as if painting in oils.

Hagiwara Hideo

Japanese, 1913–2007

Still Life with Peaches (Momo no seibutsu; 桃の静物), 1954

Woodblock print; ink and color on paper

Gift of Mary Anette and David Thompson 89.120.11



Hagiwara's early still lifes strongly relate to Pablo Picasso's still lifes from the 1910s, the early period of the Cubist art movement. As in works from that era, subjects are pictured in abstract geometric planes from a variety of viewpoints.

Hagiwara Hideo

Japanese, 1913–2007

Window (Mado; 窓), 1959

Woodblock print; ink and color on paper

Gift of Sue Y.S. Kimm and Seymour Grufferman 2019.78.77



Japanese Art—Exhibition: Abstract Prints by Hagiwara Hideo, Rotation 1, December 14, 2019-June 21, 2020

Hagiwara Hideo

Japanese, 1913–2007

Soil (9): Town in the Earth (Dojō [9]: Chitei no machi; 土壌 9 : 地底の街), 1960

Woodblock print; ink and color on paper

Gift of Sue Y.S. Kimm and Seymour Grufferman 2019.78.76

This print is part of a series of more than 20 prints that focus on the subject of soil. It also represents an innovative new approach to printmaking. Starting in 1959, Hagiwara printed the paper on both sides, thus forcing the pigment through the paper as if he were dyeing it. This special technique was laborious and time-consuming, and he abandoned it in 1963.



Hagiwara Hideo

Japanese, 1913–2007

Star Dust 1 (Hoshikuzu 1; 星屑 1), 1964

Woodblock print; ink and color on paper with mica

Lent by Gordon Brodfuehrer **L2019.177.3**



Hagiwara Hideo

Japanese, 1913–2007

Glaukos (Guraukosu; グラウコス), from the series Greek Mythology (Girisha shinwa; ギリシヤ神話), 1965

Woodblock print; ink and color on paper

Gift of Sue Y.S. Kimm and Seymour Grufferman 2019.78.78



Japanese Art—Exhibition: Abstract Prints by Hagiwara Hideo, Rotation 1, December 14, 2019-June 21, 2020

In the 1950s, Hagiwara became interested in Greek mythology, the stories told by the ancient Greeks of their gods and heroes. For Hagiwara, the ancient legends and their characters—beings possessed of virtues and sins, good and evil—mirrored our world and told the truth about human nature. Each print in his Greek Mythology series of 42 figurative subjects is rendered solely in black and white. This one is devoted to Glaukos, a mortal fisherman, who, after eating a magical herb, becomes a sea-god (in the shape of a merman) with the gift of prophecy.

Hagiwara Hideo

Japanese, 1913–2007

Circus No. 6 (Sākasu 6; サーカス 6), 1968

Woodblock print; ink and color on paper with mica

Gift of Sue Y.S. Kimm and Seymour Grufferman 2019.78.79



After his return from a brief teaching assignment at the University of Oregon in 1967, Hagiwara expanded on his use of wild, swirling lines. He then began, in his Circus and Clown series, to integrate forms that suggest figures.

Hagiwara Hideo

Japanese, 1913–2007

Clown No. 8 (Dōkeshi 8; 道化師 8), 1969

Woodblock print; ink and color on paper with mica

Gift of Sue Y.S. Kimm and Seymour Grufferman 2019.78.80



Japanese Art—Exhibition: Abstract Prints by Hagiwara Hideo, Rotation 1, December 14, 2019-June 21, 2020

Hagiwara Hideo

Japanese, 1913–2007

Lady No. 9 (Kifujin 9; 貴婦人 9), 1975

Woodblock print; ink and color on paper

The Gordon Brodfuehrer Fund for Japanese Art 2019.83.1



Hagiwara Hideo

Japanese, 1913–2007

Stone Flower: Blue Gray (Ishi no hana: ao, hai; 石の花 : 青灰), 1960

Woodblock print; ink and color on paper

Gift of Sue Y.S. Kimm and Seymour Grufferman 2019.78.81



Hagiwara started his Stone Flower series in 1960, and in most of the prints he emphasized one or two colors that he then addressed in the print title—in this case blue and gray.

“Thinking about eternal life, I gave the series the title ‘Stone Flower.’ A living flower has a short lifespan, but a stone took thousands and thousands of years to be created.”

Hagiwara Hideo

Japanese, 1913–2007

A Nebula No. 3 (Seiun 3; 星雲 3), 1987

Woodblock print; ink and color on paper

The Gordon Brodfuehrer Fund for Japanese Art 2019.84.33



Japanese Art—Exhibition: Abstract Prints by Hagiwara Hideo, Rotation 1, December 14, 2019-June 21, 2020

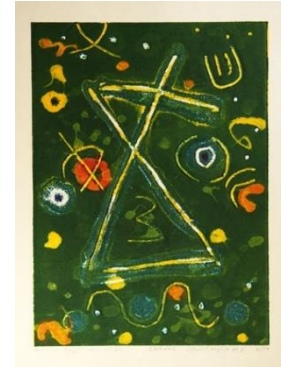
Hagiwara Hideo

Japanese, 1913–2007

Starlit Night No. 6 (Hoshizukiyo 6; 星月夜 6), 1980

Woodblock print; ink and color on paper

The Gordon Brodfuehrer Fund for Japanese Art 2019.82.3



Hagiwara Hideo

Japanese, 1913–2007

Devil Flower No. 6: Clematis (Aku no hana [6]: Tessenka; 悪の華 6 : 鉄線花), 1960

Woodblock print; ink and color on paper

The Gordon Brodfuehrer Fund for Japanese Art 20-19.82.1



Japanese Art—Exhibition: Abstract Prints by Hagiwara Hideo, Rotation 1, December 14, 2019-June 21, 2020

Gallery 227: Abstract Prints by Hagiwara Hideo

After decades of designing abstract prints, Hagiwara Hideo turned to figurative landscapes in 1981 with a focus on Mount Fuji, Japan's holy mountain. Inspired by Katsushika Hokusai's iconic series *Thirty-six Views of Mount Fuji* from the early 1830s, Hagiwara wanted to create a modern view of the mountain. The series was a challenge for him, since access to the mountain had become much easier to people in modern times and he endeavored to provide new viewpoints. In his own words: "Mt. Fuji defies all challenges. That is why people approach it with cameras and drawing pens. Whether it looks noble or vulgar depends on your mind's eye. Today's appearance is not the same as tomorrow's. Even if you think you have captured its essence, it always escapes from between your fingers. Now, I will glean the images of Mt. Fuji which have escaped me."

Hagiwara completed the *Thirty-six Fuji* series in 1986, and his novel views and lively use of color proved to be a great success. Hagiwara designed a sequel from 1990 to 1991, *Gleanings of Mt. Fuji*, as well as a series of gigantic views called *Great Fuji* that are almost double the size of his original series.

Hagiwara Hideo

Japanese, 1913–2007

Autumn Wind in the Foothills (Susono akikaze; すそ野秋風), from the series *Thirty-six Fuji* (*Sanjūroku Fuji*; 三十六富士), 1981–86

Woodblock print; ink and color on paper

Lent by Gordon Brodfuehrer **L2019.177.7**



Japanese Art—Exhibition: Abstract Prints by Hagiwara Hideo, Rotation 1, December 14, 2019-June 21, 2020

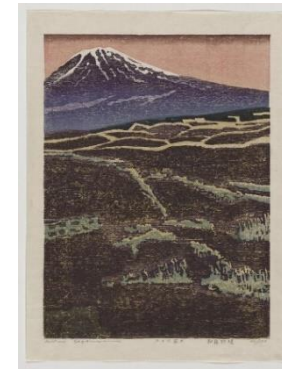
Hagiwara Hideo

Japanese, 1913–2007

Burning Meadows at Asagiri (Asagiri noyaki; 朝霧野焼), from the series Thirty-six Fuji (Sanjūroku Fuji; 三十六富士), 1981–86

Woodblock print; ink and color on paper

Gift of Gordon Brodfuehrer 2018.105.10



Hagiwara Hideo

Japanese, 1913–2007

Hint of Sunshine (Usubare; 薄晴れ), from the series Thirty-six Fuji (Sanjūroku Fuji; 三十六富士), 1981–86

Woodblock print; ink and color on paper

Gift of Gordon Brodfuehrer 2018.105.13



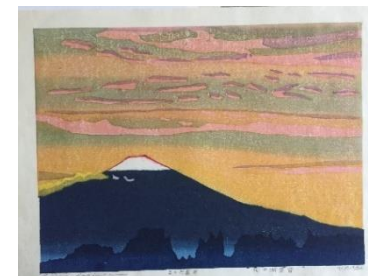
Hagiwara Hideo

Japanese, 1913–2007

Dawn over Lake Kawaguchi (Kawaguchi-ko tasogare; 河口湖黄昏), from the series Thirty-six Fuji (Sanjūroku Fuji; 三十六富士), 1981–86

Woodblock print; ink and color on paper

Lent by Gordon Brodfuehrer **L2019.177.6**



Japanese Art—Exhibition: Abstract Prints by Hagiwara Hideo, Rotation 1, December 14, 2019-June 21, 2020

Hagiwara Hideo

Japanese, 1913–2007

Remaining Flowers (Nagori no hana; 名残りの花), from the series

Thirty-six Fuji (Sanjūroku Fuji; 三十六富士), 1981–86

Woodblock print; ink and color on paper

Gift of Gordon Brodfuehrer 2017.142.1



Hagiwara Hideo

Japanese, 1913–2007

Longing at Kagosaka (Kagosaka bojō; 籠坂慕情), from the series

Thirty-six Fuji (Sanjūroku Fuji; 三十六富士), 1981–86

Woodblock print; ink and color on paper

Gift of Gordon Brodfuehrer 2018.105.14



Japanese Art—Exhibition: Abstract Prints by Hagiwara Hideo, Rotation 1, December 14, 2019-June 21, 2020

Gallery 227: Abstract Prints by Hagiwara Hideo

After decades of designing abstract prints, Hagiwara Hideo turned to figurative landscapes in 1981 with a focus on Mount Fuji, Japan's holy mountain. Inspired by Katsushika Hokusai's iconic series *Thirty-six Views of Mount Fuji* from the early 1830s, Hagiwara wanted to create a modern view of the mountain. The series was a challenge for him, since access to the mountain had become much easier to people in modern times and he endeavored to provide new viewpoints. In his own words: "Mt. Fuji defies all challenges. That is why people approach it with cameras and drawing pens. Whether it looks noble or vulgar depends on your mind's eye. Today's appearance is not the same as tomorrow's. Even if you think you have captured its essence, it always escapes from between your fingers. Now, I will glean the images of Mt. Fuji which have escaped me."

Hagiwara completed the *Thirty-six Fuji* series in 1986, and his novel views and lively use of color proved to be a great success. Hagiwara designed a sequel from 1990 to 1991, *Gleanings of Mt. Fuji*, as well as a series of gigantic views called *Great Fuji* that are almost double the size of his original series.

Hagiwara Hideo

Japanese, 1913-2007

Light Snowfall (Awayuki furu; 淡雪降る), from the series *Gleanings of Mt. Fuji* (Kobore Fuji; 拾遺富士), 1990-91

Woodblock print; ink and color on paper

Gift of Hagiwara Jo 2019.84.6



Japanese Art—Exhibition: Abstract Prints by Hagiwara Hideo, Rotation 1, December 14, 2019-June 21, 2020

Hagiwara Hideo

Japanese, 1913–2007

Good Snow (Yuki mo yoi; 雪もよい), from the series Gleanings of Mt.

Fuji (Kobore Fuji; 拾遺富士), 1990–91

Woodblock print; ink and color on paper

Gift of Hagiwara Jo 2019.84.10



Hagiwara Hideo

Japanese, 1913–2007

Projection of Mt. Fuji (Tōei Fuji; 投影富士), from the series Gleanings of

Mt. Fuji (Kobore Fuji; 拾遺富士), 1990–91

Woodblock print; ink and color on paper

Gift of Hagiwara Jo 2019.84.11



Hagiwara Hideo

Japanese, 1913–2007

As Darkness Leaves (Kurentosu; 昏れんとす), from the series

Gleanings of Mt. Fuji (Kobore Fuji; 拾遺富士), 1990–91

Woodblock print; ink and color on paper

Gift of Gordon Brodfuehrer 2018.105.17



Japanese Art—Exhibition: Abstract Prints by Hagiwara Hideo, Rotation 1, December 14, 2019-June 21, 2020

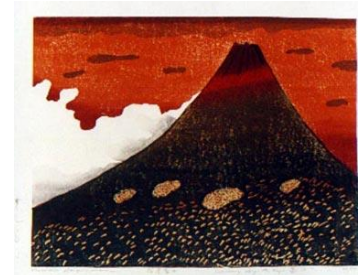
Hagiwara Hideo

Japanese, 1913–2007

Evening Sky Mt. Fuji (Akane Fuji; 茜不二), from the series Gleanings of Mt. Fuji (Kobore Fuji; 拾遺富士), 1990–91

Woodblock print; ink and color on paper

Gift of Hagiwara Jo 2019.84.14



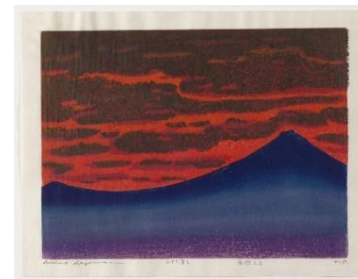
Hagiwara Hideo

Japanese, 1913–2007

The Sky Is Aflame (Sora moeru; 空燃える), from the series Thirty-six Fuji (Sanjūroku Fuji; 三十六富士), 1981–86

Woodblock print; ink and color on paper with mica

Gift of Gordon Brodfuehrer 2018.105.11



Hagiwara Hideo

Japanese, 1913–2007

An Evening Moon (Yoizuki kakaru; 宵月かかる), from the series Gleanings of Mt. Fuji (Kobore Fuji; 拾遺富士), 1990–91

Woodblock print; ink and color on paper

Gift of Gordon Brodfuehrer 2018.105.16



Japanese Art—Exhibition: Abstract Prints by Hagiwara Hideo, Rotation 1, December 14, 2019-June 21, 2020

Hagiwara Hideo

Japanese, 1913–2007

The Sun over Fuji (Nichirin Fuji; 日輪富士), from the series Great Fuji (Ōfuji; 大富士), 1990

Woodblock print; ink and color on paper

Gift of Hagiwara Jo 2019.84.16



Hagiwara Hideo

Japanese, 1913–2007

Mount Fuji with a Coating of Snow (Yukigeshō Fuji; 雪化粧富士), from the series Great Fuji (Ōfuji; 大富士), 1991

Woodblock print; ink and color on paper

Gift of Hagiwara Jo 2019.84.18



Hagiwara Hideo

Japanese, 1913–2007

Sunset Mt. Fuji (Higure Fuji; 日暮富士), from the series Great Fuji (Ōfuji; 大富士), 1995

Woodblock print; ink and color on paper

Gift of Hagiwara Jo 2019.84.20



Japanese Art—Exhibition: Abstract Prints by Hagiwara Hideo, Rotation 1, December 14, 2019-June 21, 2020

Hagiwara Hideo

Japanese, 1913–2007

Memory No. 20 (Tsuioku 20; 追憶 20), 1995

Woodblock print; ink and color on paper

The Gordon Brodfuehrer Fund for Japanese Art 2019.83.3



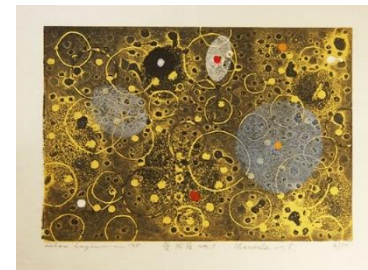
Hagiwara Hideo

Japanese, 1913–2007

Mandala No. 1 (Mandara 1; 曼陀羅 1), 1998

Woodblock print; ink and color on paper

The Gordon Brodfuehrer Fund for Japanese Art 2019.82.4



Hagiwara Hideo

Japanese, 1913–2007

Seasonal Poem (2) (Kisetsu no uta [2]; 季節の詩 2), 1999

Woodblock print; ink and color on paper

Gift of Hagiwara Jo 2019.84.32

