

Welcome
Back!



Helena Hernmarck, United States, 1941, Sun
Worshippers, 1964, Wool; tapestry weave,
Gift of Helena M. Hernmarck, 2008.57.6,
©1964 Helena Hernmarck

Mia

Agenda

- Staff greeting and welcome
- Remarks from Katie Luber and Kristin Prestegaard
- Museum updates
- Breakout groups and break (15 min)
- Transition Council
- Mia Buddies
- Touring update
- Q & A

Learning Team

- Debra Hegstrom, Senior Educator
- Sheila McGuire, Head of Student and Teacher Learning
- Amanda McMahon, Student and Teacher Learning Coordinator
- Paula Warn, Tour Coordinator
- Kara ZumBahlen, Associate Educator

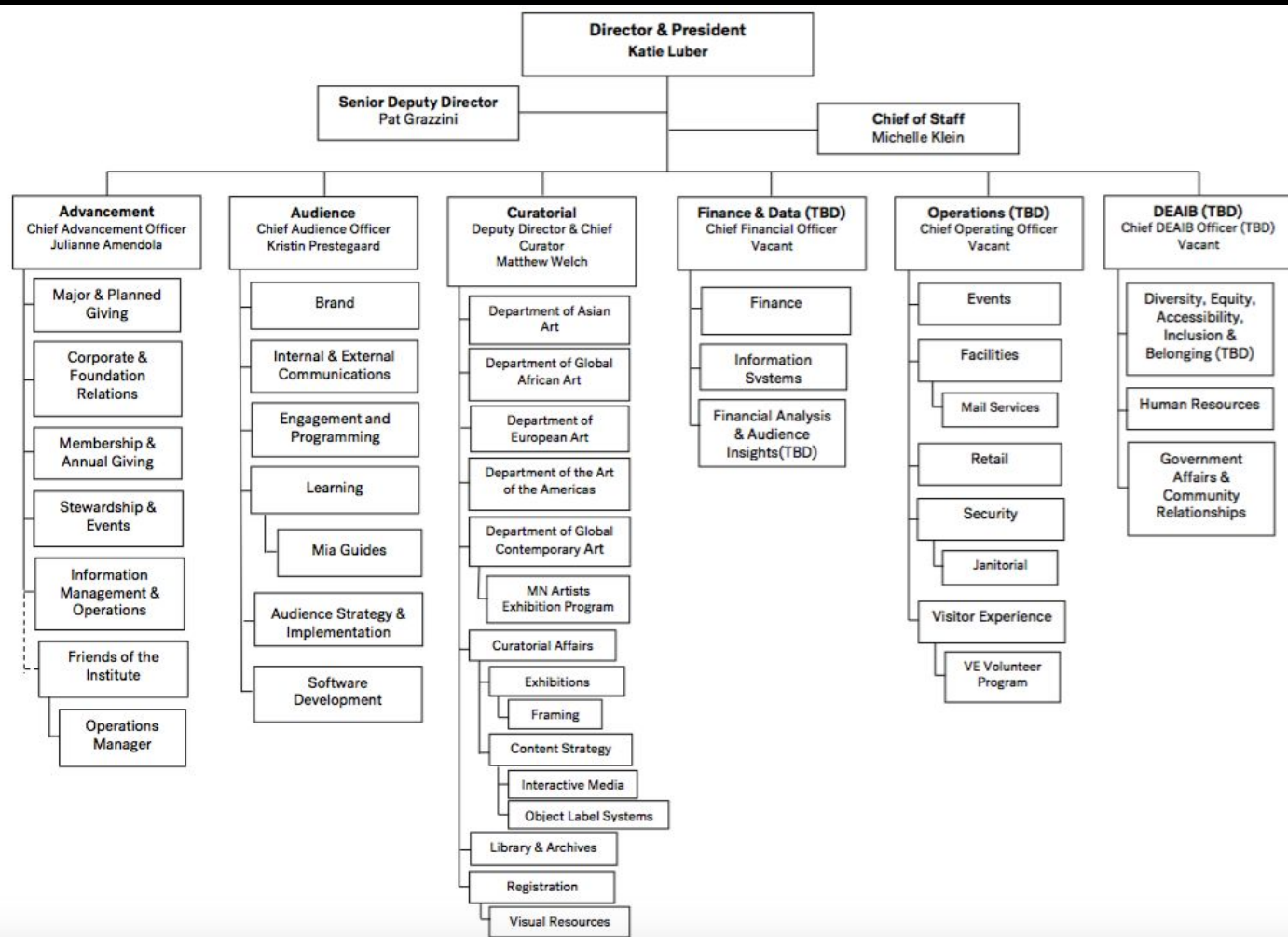
Katie Luber, Nivin and
Duncan MacMillan Director
& President



Kristin Prestegaard,
Chief Audience Officer



Mia's organizational chart is provided on the Mia Guide website.



Badge update

All Mia Guides will be issued new badges, with a new photo.

We will schedule sign-ups for new photography. Until then, please use your current badge to enter Mia **Thursday - Sunday, 10 to 5 only**, but refrain from wearing badges until tours resume.



Mia resources update

- Library:
Remains closed to the public for the foreseeable future. If you have research questions or needs, reach out to Debbi or Kara.
- Tour Office:
Remains closed until new badges are received.
The self-service coat check is available.

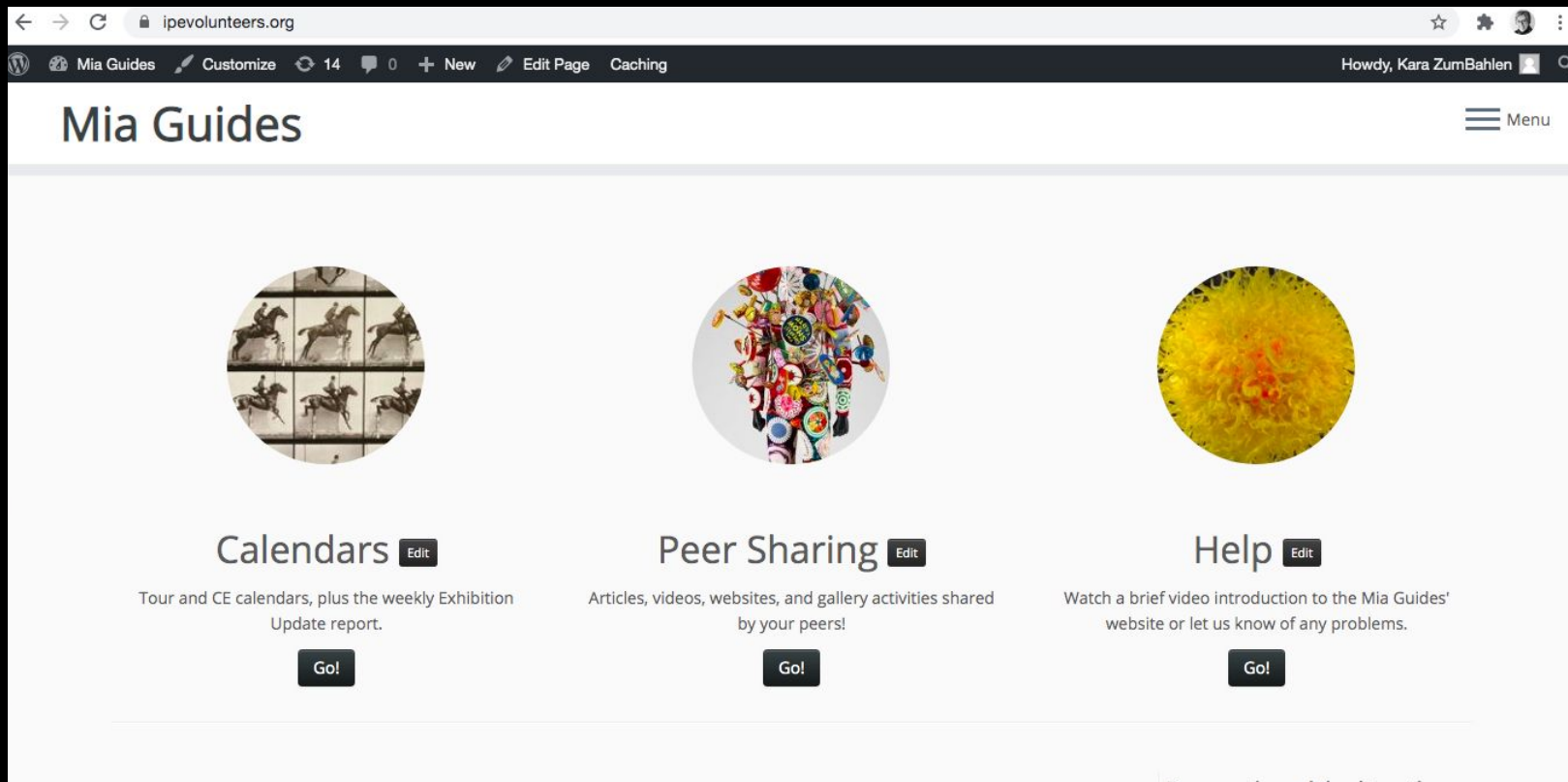


Mia resources update

- Print Study Room
and
- Photo Study Room:
Appointments are on pause until
Covid numbers decline. Check
Mia website for updates.



Mia Guide website update (<https://ipevolunteers.org>)



The screenshot shows a web browser at the URL ipevolunteers.org. The page title is "Mia Guides" and the user is logged in as "Howdy, Kara ZumBahlen". The main content area features three circular images, each with a corresponding title and description:

- Calendars** (with an "Edit" button): "Tour and CE calendars, plus the weekly Exhibition Update report." (with a "Go!" button)
- Peer Sharing** (with an "Edit" button): "Articles, videos, websites, and gallery activities shared by your peers!" (with a "Go!" button)
- Help** (with an "Edit" button): "Watch a brief video introduction to the Mia Guides' website or let us know of any problems." (with a "Go!" button)



Close

Calendars

Guide Training and CE

School Guides

Topics for school tours

AAG Sets

Forms and Procedures (School Tours)

Youth Book Tours

Adult/Multigenerational Guides

Forms and Procedures (Adult Tours)

Book Tours

Mia Guide Newsletter

Art Cart

Manuals and Inventory Forms

Art Cart Policies and Procedures

Touring Procedures

Accessibility/People with Disabilities

Workplace Policies

Mia Policies and Org Charts

ning/

0 + New Edit Page Caching

Guide Training and CE Edit

[Fall 2021 Training](#)

[All Videos \(e.g., Art Breaks, CE sessions, Training\)](#)

[Workshops and Cultural Fluency Training](#)

[Archived Guide Classes \(CIF, AAG, Docent\)](#)

Fall 2021 Training

Week 1: Combined session, 9.9.21 (repeated 9.11.21) Edit

Recording of session: to come

Presentation slides: to come

Feedback form for attendance credit: [Week 1 feedback form](#)

Homework

Adult guides:

Wayfinding worksheet using new gallery rotations and acquisitions: [Wayfinding Mia Guides 2021](#)

School guides:

Review Art Adventure approach (read an intro of any AAG booklet, [link here](#)) and AAG routes ([link here](#))

Wayfinding worksheet for AAG: [Art Adventure Wayfinding 2021](#)

Optional, complete wayfinding sheet for adult guides: [Wayfinding Mia Guides 2021](#)

Search

Content is searched by titles, category, and

Search

Mia Guide website update

The screenshot shows the Mia Guides website dashboard. At the top, the browser address bar displays 'ipevolunteers.org'. Below the browser, a navigation bar includes 'Mia Guides', 'Customize', '14', '0', '+ New', 'Edit Page', 'Caching', and a user profile 'Howdy, Kara ZumBahlen'. The main content area features three primary sections: 'Calendars' (with an 'Edit' button), 'Peer Sharing' (with an 'Edit' button), and 'Help' (with an 'Edit' button'). Each section includes a brief description and a 'Go!' button. Below these, a message states: 'To check out or request a leave of absence, please fill out this [Google Form](#).' On the right side, a section titled 'Recently added to the site:' is circled in red. It contains two lines of text: 'Click on this [link](#) to access Mia Guide training session materials.' and 'Click on this link to access our Virtual Tour Resource page.' At the bottom, there is a search bar with the text 'Search' and 'Search', and a 'Contact Us' button. A footer area shows a search result snippet: 'https://ipevolunteers.org/objectfiles/programs/fall-2021-training/' and 'Contact Debra'.

Small group discussion in breakout rooms
(10 minutes)

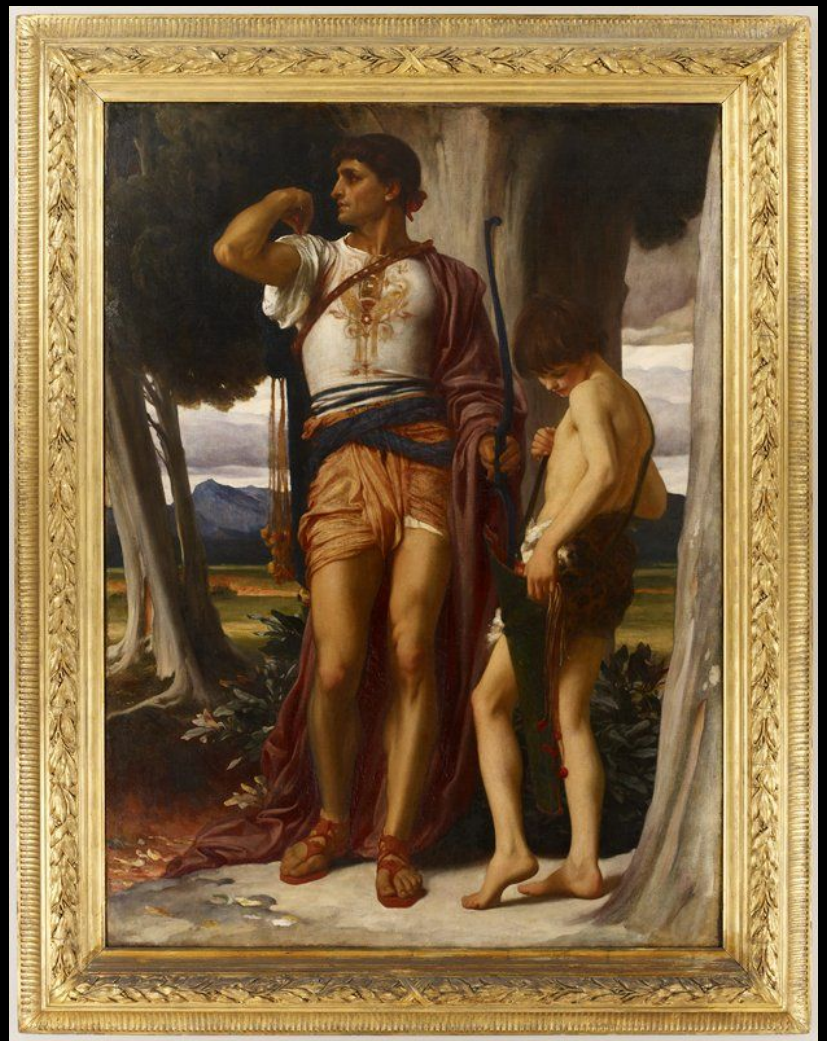
If you have been back to Mia,
what was the first artwork or
exhibition you visited? And if you
have not yet returned, what is
the first thing you plan to see?



Bruce Anderson; Publisher: Vermillion Editions Limited, Conversation, 1981, Color lithograph, screenprint, etching, and silver powder, Vermillion Archival Collection, P.83.60.10, © Bruce A. Anderson

Stretch Break (5 minutes)

Frederic Leighton, Jonathan's Token to David, 1868, Oil on canvas, The John R. Van Derlip Fund, 74.71



Transition Council

- Duration: September 2021 to June 2022
- Goals and objectives
- Leadership: merging three groups
- Subcommittees
- First meeting: late September (6-7:30 pm)

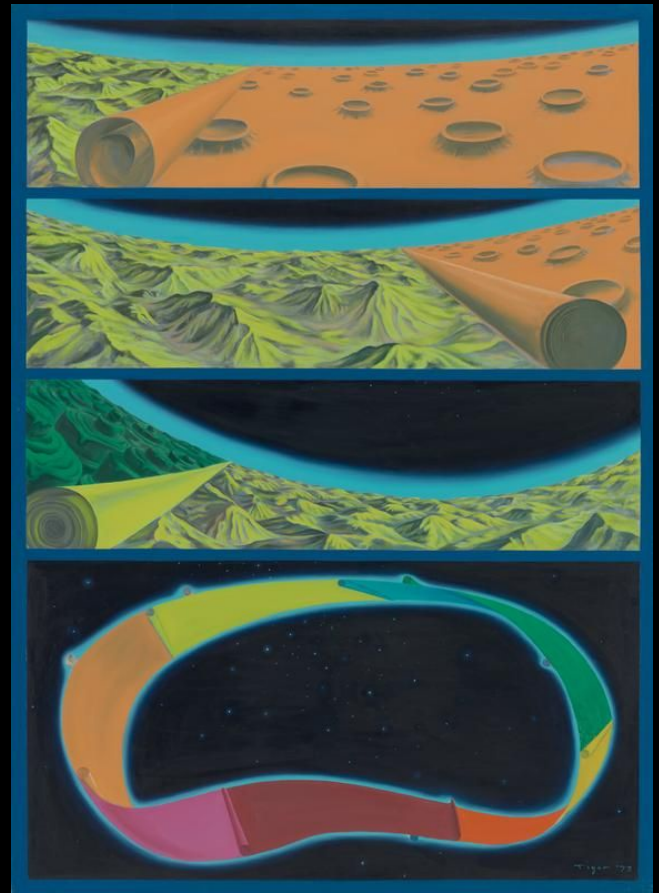


Navajo, United States, North America, Transitional Blanket, 1895, Wool, pigments, Gift of Elissa and Paul Cahn, 2017.127.7

Transition Council

Subcommittees/Tasks:

- Public tours
- Book tours
- Accessibility
- Newsletter
- Program guidelines and requirements
- Affinity groups
- Outreach



Tateishi Tiger, Japan, 1941–98, *The Star of Möbius*, 1973, Acrylic on canvas, The Marilyn C. Benson Endowment for Art Acquisition, 2020.8, © Tiger Tateishi

Transition Council Members

Victoria Amaris (A)

Mary DesRoches (S)

James Eastman (A)

Loreen Fripp (S)*

Shawn Gilliam (A)

Rebecca Haddad (A)*

Terry Keir (S)

Barb Mikelson (S)

Nancy McRae (S)

Lyn Osgood (A)

Monica Stuart (S)

Meg Ubel (A)

Sheila-Marie Untiedt (A)*

Kit Wilson (A)

Marne Zafar (A)

*Council co-chairs

Mia Buddies

- Discover what you can offer one another
- Meet virtually or in person
- Work together within your audience choice
- Assignment: connect with 1-2 other guides you haven't met

Jalisco, Joined Figures, 200 BCE–400 CE, Clay, 66.42



There are many ways
in which you can
share your expertise
with each other.

Wazhazhe (Osage), United States, North
America, Friendship Blanket, 1900, Wool,
beads, silk ribbon, The George Family
Acquisition Fund for Native American Art,
2011.52





Suggestions for sharing knowledge:

- Collections
- Culture/language
- Program
- Age group
- Others?

Marcel Duchamp; Boîte-en-Valise (Box in a Valise) / De ou par Marcel Duchamp ou Rose Sélavy (From or by Marcel Duchamp or Rose Sélavy), 1936–41; assembled 1961, 97.20.2, © Succession Marcel Duchamp / ADAGP, Paris / Artists Rights Society (ARS), New York 2017

Tour Office Updates

- In the last fiscal year, **357** virtual tours were conducted, serving **10,304** people!
- Tour day survey - later this fall
- Plans for FY 2022

What About Tours?

- **School tours:** in-person and virtual tours are on pause this fall. We hope to offer virtual tours again beginning in January.
- **Adult tours:** virtual public book tours and tour of the month are scheduled for September through December. January through March tours will remain virtual.
- **Onsite school and adult tours:** Mia is closely monitoring health and wellness recommendations from the CDC and local and state leaders to determine when in-person tours will be reinstated.

Homework

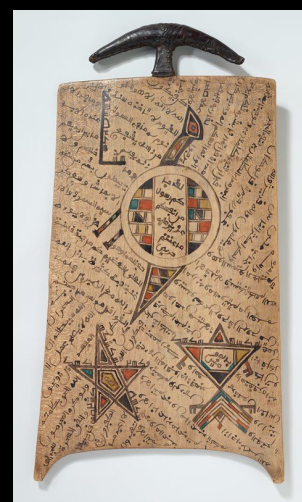
Adult guides:

- Wayfinding worksheet using new gallery rotations and acquisitions
- Connect with 1-2 other guides you haven't met

School guides:

- Review Art Adventure approach (intro of booklet) and routes
- Wayfinding worksheet for Art Adventure artworks
- Optional, wayfinding sheet for adult guides
- Connect with 1-2 other guides you haven't met

No class next week (Yom Kippur). Our next session is September 23. School guides: 1 to 3 pm (virtual) and Adult guides: 6 to 8 pm (virtual)



Hausa, Nigeria,
Writing board, 20th
century, 2014.45.2

Weekly feedback forms

Each week, we will provide a feedback form to complete for attendance credit and to capture any questions or concerns from that session. Even if you miss a session and need to make it up at a later date by watching the recording, just fill out the session feedback form to get the attendance credit. This provides a level of flexibility in completing this fall's training.

Kida Kadō, Writing Calligraphy, 19th century, Ink and color on paper, 2013.29.216



Q & A

Unknown, China, Seated Avalokiteshvara
Bodhisattva (Guanyin), 11th–early 12th
century,, 98.62a-h



Thank you!

Kara ZumBahlen, Associate Educator, kzumbahlen@artsmia.org

Debbi Hegstrom, Senior Educator, dhegstrom@artsmia.org



Stuart D. Klipper, Tree, Farm Road, Highway 22, Northeast of
Rushville, Fairfield Co., Ohio, 3, 1995, 2008.31.2, © Stuart D. Klipper