

Minneapolis Institute of Art

# Meiji: Looking Back, Looking Forward

Mai Yamaguchi

Andrew W. Mellon Assistant Curator of Japanese and Korean Art

# Mia

# Meiji Era

---

---

# Meiji Era

- **Arrival of Commodore Matthew C. Perry and the Opening of the Ports**
- 1853: Commodore Perry arrived in Uraga with four black warships. He returned in 1854 and forced the Tokugawa shogunate to sign the Treaty of Kanagawa, which opened Japan's ports. The treaty also led to other similar unequal treaties with other Western powers.
- **Meiji Restoration**
- 1868: Refers to the restoration of power to the Emperor. From the 12<sup>th</sup> century to 1868, a shogun ruled Japan and the Emperor was largely a figurehead. During the Edo period, the Tokugawa family ruled. Meiji Charter Oath promises to break from the past.
- **Samurai Discontent and Period of Unrest**
- 1871: Domains were replaced with prefectures.
- 1876: Samurai lose their stipends and are banned from wearing two swords.
- 1874-1877: Samurai rebellions, ends with the suicide of Saigō Takamori.
- **Constitution**
- 1889: Constitution (based on German model) is conferred to the people as a "gift" from the Emperor
- 1890: First election for the Diet held. Only the wealthy are allowed to vote.
- **Industrialization**
- The Japanese government primarily pushed for rapid modernization to build their military power. Mechanized industrialization was especially important so that Japan wouldn't be in a subordinate position as a raw material supplier to industrialized countries.



No. 1, Arrival of American Ships at Uraga 1876, Tsukioka Yoshitoshi (2017.106.128)



No. 1, Arrival of American Ships at Uraga 1876, Tsukioka Yoshitoshi  
(2017.106.128)



Under the Wave off Kanagawa, 1830-1833, Katsushika Hokusai



No. 1, Arrival of American Ships at Uraga 1876, Tsukioka Yoshitoshi (2017.106.128)

Minneapolis Institute of Art



Umezawa Manor in Sagami Province, 1830-1833, Katsushika Hokusai (74.1.234)



No. 1, Arrival of American Ships at Uraga 1876, Tsukioka Yoshitoshi (2017.106.128)

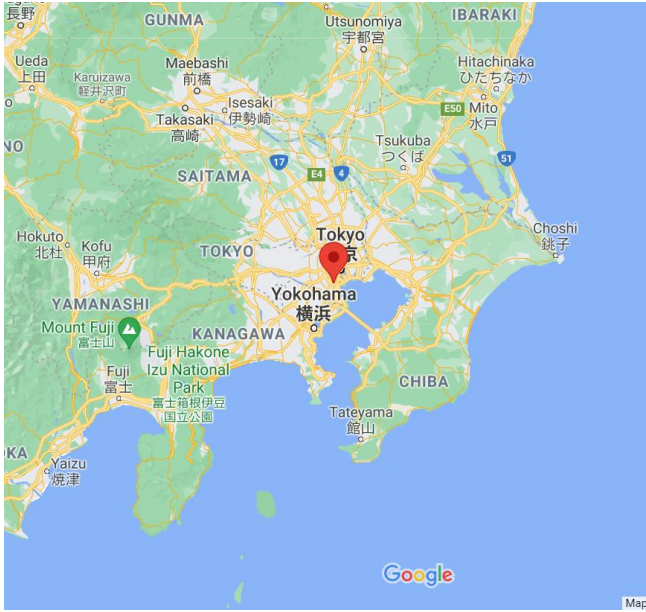


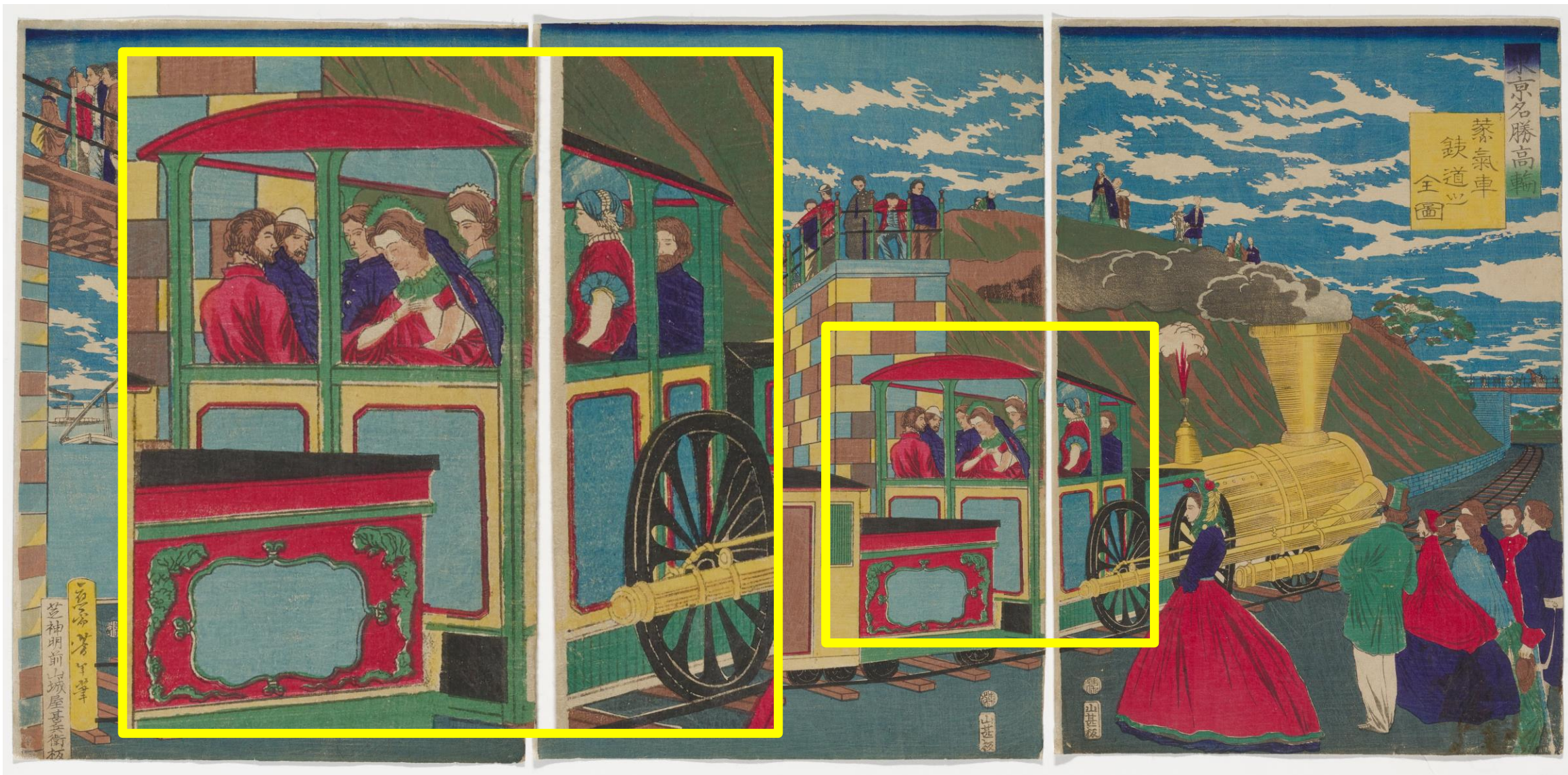
*Famous Places in Tokyo, Takanawa: Complete Picture of a Steam Locomotive and Railroad, 1871, Tsukioka Yoshitoshi (2017.106.107A-C)*



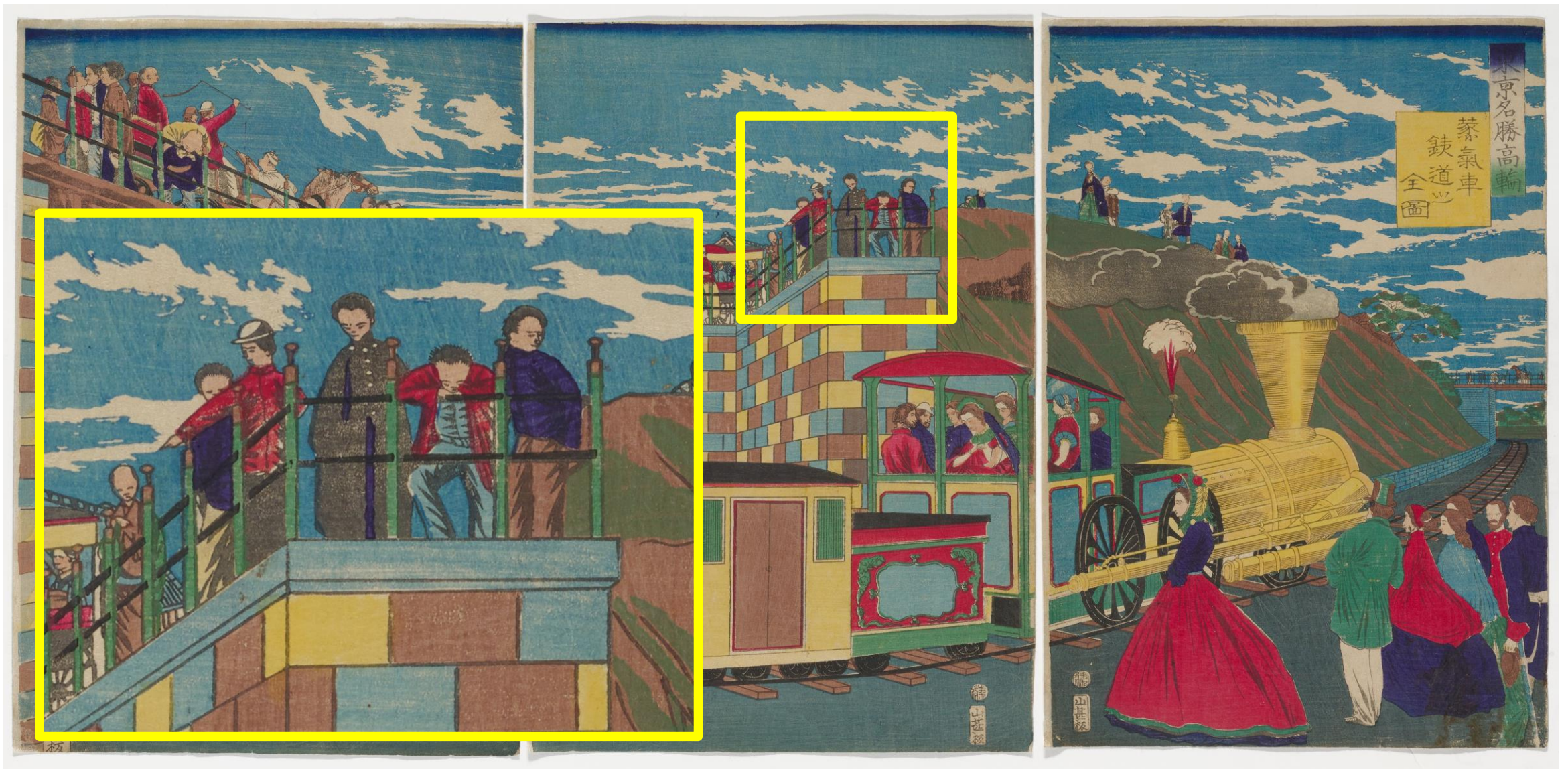


Takanawa Embankment, excavated 2019





*Famous Places in Tokyo, Takanawa: Complete Picture of a Steam Locomotive and Railroad, 1871, Tsukioka Yoshitoshi (2017.106.107A-C)*



*Famous Places in Tokyo, Takanawa: Complete Picture of a Steam Locomotive and Railroad, 1871, Tsukioka Yoshitoshi (2017.106.107A-C)*



*Famous Places in Tokyo, Takanawa: Complete Picture of a Steam Locomotive and Railroad, 1871, Tsukioka Yoshitoshi (2017.106.107A-C)*



*Famous Places in Tokyo, Takanawa: Complete Picture of a Steam Locomotive and Railroad, 1871, Tsukioka Yoshitoshi (2017.106.107A-C)*



*Bowler Hat*, c. 1890, Hayakawa Shōkosai I (2018.17.1)



Bowler Hat, c. 1890, Hayakawa Shōkosai I (2018.17.1)



Ichikawa Danjūrō IX, April 1890, Tsukioka Yoshitoshi (2017.106.238A-C)



*Bowler Hat*, c. 1890, Hayakawa Shōkosai I (2018.17.1)



*Actor Bandō Hikosaburō V*, 1862, Tsukioka Yoshitoshi (2017.106.29)

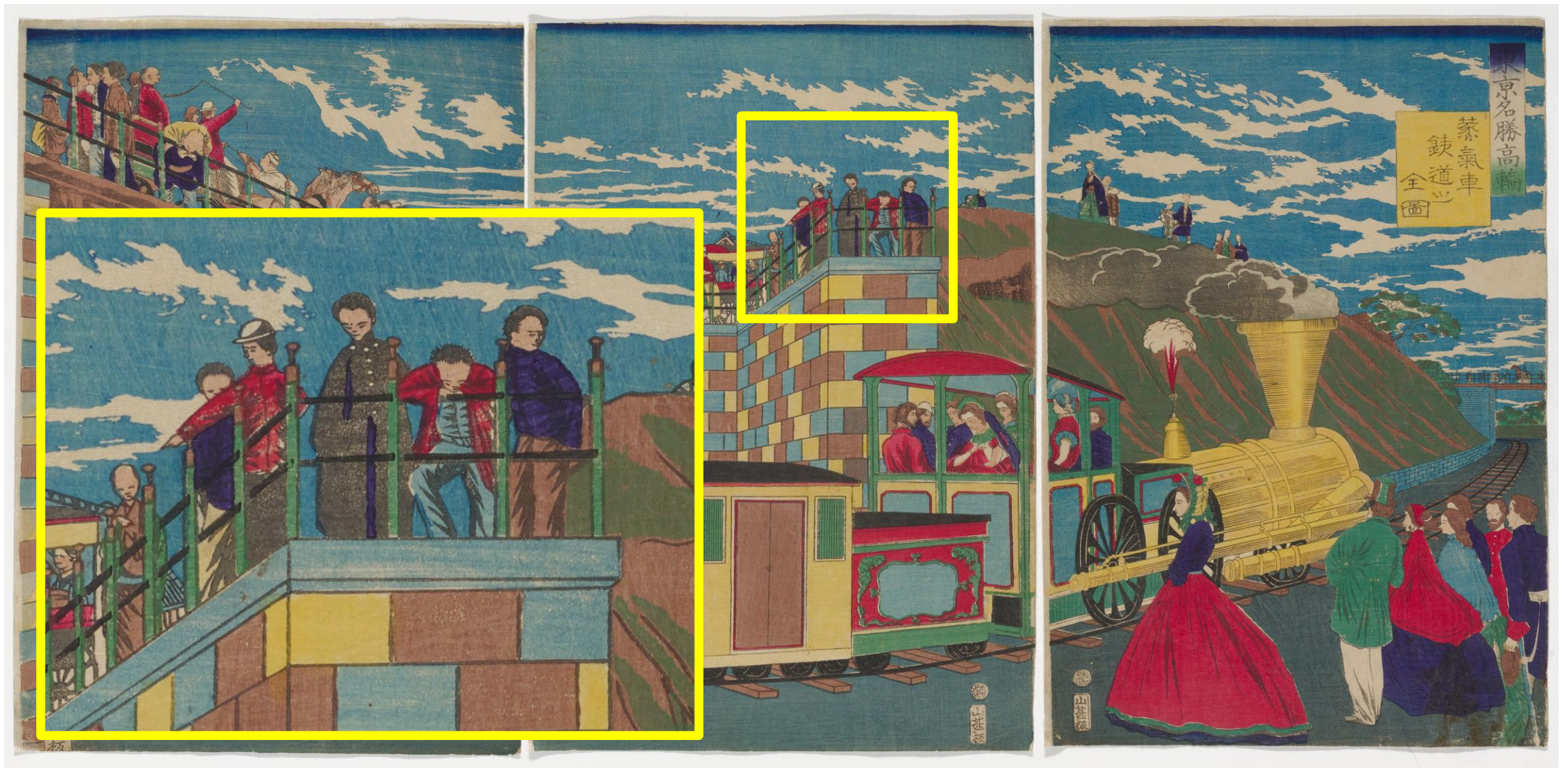




Bowler Hat, c. 1890, Hayakawa Shōkosai I (2018.17.1)



The Miracle of Famous Paintings by Ukiyo Matahei, 1853, Utagawa Kuniyoshi (99.59.25A,B)



*Famous Places in Tokyo, Takanawa: Complete Picture of a Steam Locomotive and Railroad, 1871, Tsukioka Yoshitoshi (2017.106.107A-C)*



*Appearing as if Having Been on a Stroll, Behavior of a Lady of the Meiji Period, 1888, Tsukioka Yoshitoshi*



Main Gate of the Second Exposition at Tokyo, 1881, Kobayashi Kiyochika (81.133.41)



*Eagle Threatening Monkeys*, second half 19<sup>th</sup> century, Kano Hōgai (2013.29.171)



*Eagle Threatening Monkeys*, second half 19<sup>th</sup> century, Kano Hōgai (2013.29.171)



*Eagle Threatening Monkeys*, second half 19<sup>th</sup> century, Kano Hōgai (2013.29.171)



*Hawk*, 16<sup>th</sup> century, Kano Yukinobu (2013.29.93)



*Cherry-Blossom Viewing*, c. 1910, Ikeda Shōen (2005.35)





*Cherry-Blossom Viewing*, c. 1910, Ikeda Shōen (2005.35)