

Minneapolis Institute of Art

# Tour Policies and Procedures & Social and Emotional Learning (SEL) Tours Mia Guides

December 16, 2021

# Mia



# Record

# Agenda:

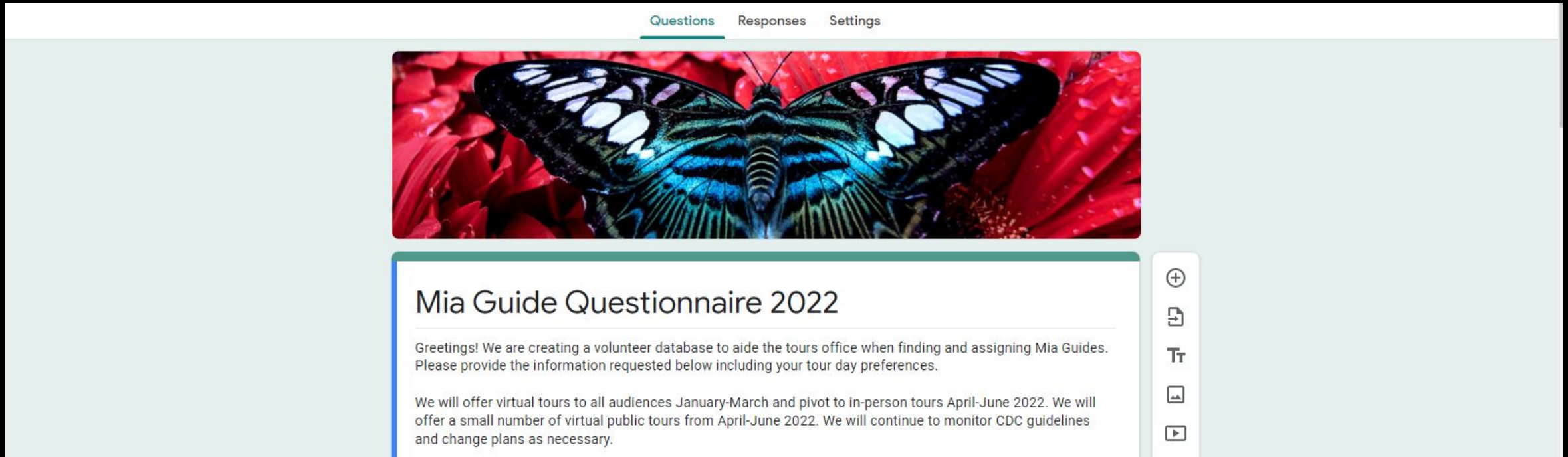
## Welcome!

- Paula: Updates on our new tour scheduling system
- Q & A
- Debbi: Special Exhibition tours
- Kara: Badge update and Tour Breaks
- Role of guides at Mia
- Sheila: SEL Tour
- Nancy Kelly and Sue Hamburge: artwork examples from tours
- Q & A


# Mia Guide Questionnaire January-June 2022

Look for it and fill out by December 23. A copy of your response will be emailed to you.

If you did not receive the link for it, contact Kara or Debbi.



Questions Responses Settings



## Mia Guide Questionnaire 2022

Greetings! We are creating a volunteer database to aide the tours office when finding and assigning Mia Guides. Please provide the information requested below including your tour day preferences.

We will offer virtual tours to all audiences January-March and pivot to in-person tours April-June 2022. We will offer a small number of virtual public tours from April-June 2022. We will continue to monitor CDC guidelines and change plans as necessary.

+

📄

Tr

🖼️

▶️

We are developing a new tour scheduling system using Artifax and Staff Savvy. The results from the questionnaire will be downloaded into this new system.

What does this mean for guides?

- Guides must have a working email address and check it regularly (every 2 to 3 days).
- As with the old system (MyMia), guides will be responsible for logging in to check their assignments. Staff will provide training on how to access and use this new system when it is launched.
- For checking out and leaves of absence, continue to use the form posted on the guide website until further notice.

- Self-guided groups are now registered by Visitor Experience (VE) staff.
- Guided tours are scheduled by the tour office (Paula).

When we return to in-person tours, a VE greeter will be present to guide the entry of tour groups and self-guided groups.



- From January through the end of March, we are scheduling only virtual tours.
- In-person tours will start in April.



- For this year, we are asking active guides for a 12 to 24 tour credit range commitment.
- We do not know what the level of in-person tours will be, so you may not meet that commitment if you are doing only in-person tours--and that is OK!
- Next year (2022-2023) we need to see what's possible regarding visitation, audience needs and volunteer resources. It's a balance!
- A new tour credit range will be set for next year and communicated in the letter of agreement for 2022/2023.





To receive tour assignments, virtual or in-person, you need to complete this fall's training sessions. A second attendance check will happen in mid-January.

The screenshot shows the 'Mia Guides' website interface. At the top left is the site name 'Mia Guides' and at the top right is a 'Menu' icon. On the left side, there is a search bar with a magnifying glass icon, a text input field, and a 'Search' button. The main content area is titled 'Fall 2021 Training' with a folder icon. Below this title, there is a section for '12.9.21 Combined CE session Trauma Awareness' with an 'Edit' button. This section contains several links: a recording link, a chat link, an attendance feedback form link, a presentation link, and a video link. On the right side, there is a 'Recently added to the site:' section with two links to training materials and a virtual tour resource page.

Mia Guides

Menu

Search

Fall 2021 Training

12.9.21 Combined CE session Trauma Awareness Edit

Here is a link to the recording:

[12.9.21 combined guide CE session](#)

Here is the chat:

[Guide session 12.9.21 chat](#)

Please fill out the attendance feedback form:

[Attendance feedback form for 12.9.21 session](#)

Here are Kestrel's slides:

[MIA Trauma presentation](#)

Here are Andrew's slides:

[Trauma-Aware Art Museum Education for MIA Guides](#)

See the chat for additional resources recommended by your peers.

Here is one other video recommended by Kestrel (see her slides for additional resource links):

[How childhood trauma affects health across a lifetime | Nadine Burke Harris](#)

Recently added to the site:

Click on this [link](#) to access Mia Guide training session materials.

Click on this [link](#) to access our Virtual Tour Resource page.

To tour in person, you will need to be vaccinated.

- Staff will be scheduling a number of Zoom calls to confirm vaccination information.
- If you are not vaccinated and do not plan to be vaccinated, please reach out to Debbi or Kara to discuss.

Questions for Paula?

# Supernatural America: The Paranormal in American Art

Mysterious and unexplained phenomena have consistently inspired artists. Beyond the art world, audiences cannot get enough of books, films, podcasts, and TV shows that center on these tales. They have seeped into our culture and across innumerable genres as they evoke what lies beneath the surface. . . . But it is largely a world of fiction. “Supernatural America” deals with firsthand experience, to the degree that many of the artists in the exhibition—and I, as the curator—would describe the supernatural as natural and the paranormal as normal.

<https://new.artsmia.org/exhibition/supernatural-america-the-paranormal-in-american-art>

**Minneapolis Institute of Art**



Agatha Wojciechowsky. American (born Germany), 1896-1986, and spirits. *Untitled* (detail), 1963. Watercolor on paper. Courtesy the collection of Steven Day, New York, NY

# Supernatural America: The Paranormal in American Art

February 19 – May 15, 2022

*Enjoy virtual and in-person public tours of the exhibition on select Wednesdays and Sundays*

## Virtual Public Tours

March 2, 6, 16, 20 & 30 | 1pm

April 13, 24 | 2pm

May 8 | 2pm

Virtual tours are free and can be reserved from the Mia website. An exhibition ticket is not required.



# Supernatural America: The Paranormal in American Art

## In-Person Public Tours

April 3, 6, 10, 17, 20 | 2pm

May 1, 4, 11 | 2pm

In-person tours are open to anyone with an exhibition ticket.

We will continue to monitor and follow CDC guidelines related to in-person gatherings.

We plan to monitor numbers on public tours and assign guides accordingly.

# Supernatural America: The Paranormal in American Art

- Survey to go out in early January to solicit interest in giving tours
- 16 public tours total; private tours scheduled when there is availability on requested days
- Preference for people who will do both virtual and in-person tours; school (older students) and adult groups
- 5-6 guides per day; may receive 4-5 tour assignments each

# Upcoming Special Exhibitions: FY 2022-23

*Dressed by Nature: Textiles of Japan*

June 25 - September 11, 2022

*Van Gogh and the Olive Trees*

June 25 - ?

*Botticelli and the Italian Renaissance*

October 2022 - January 2023

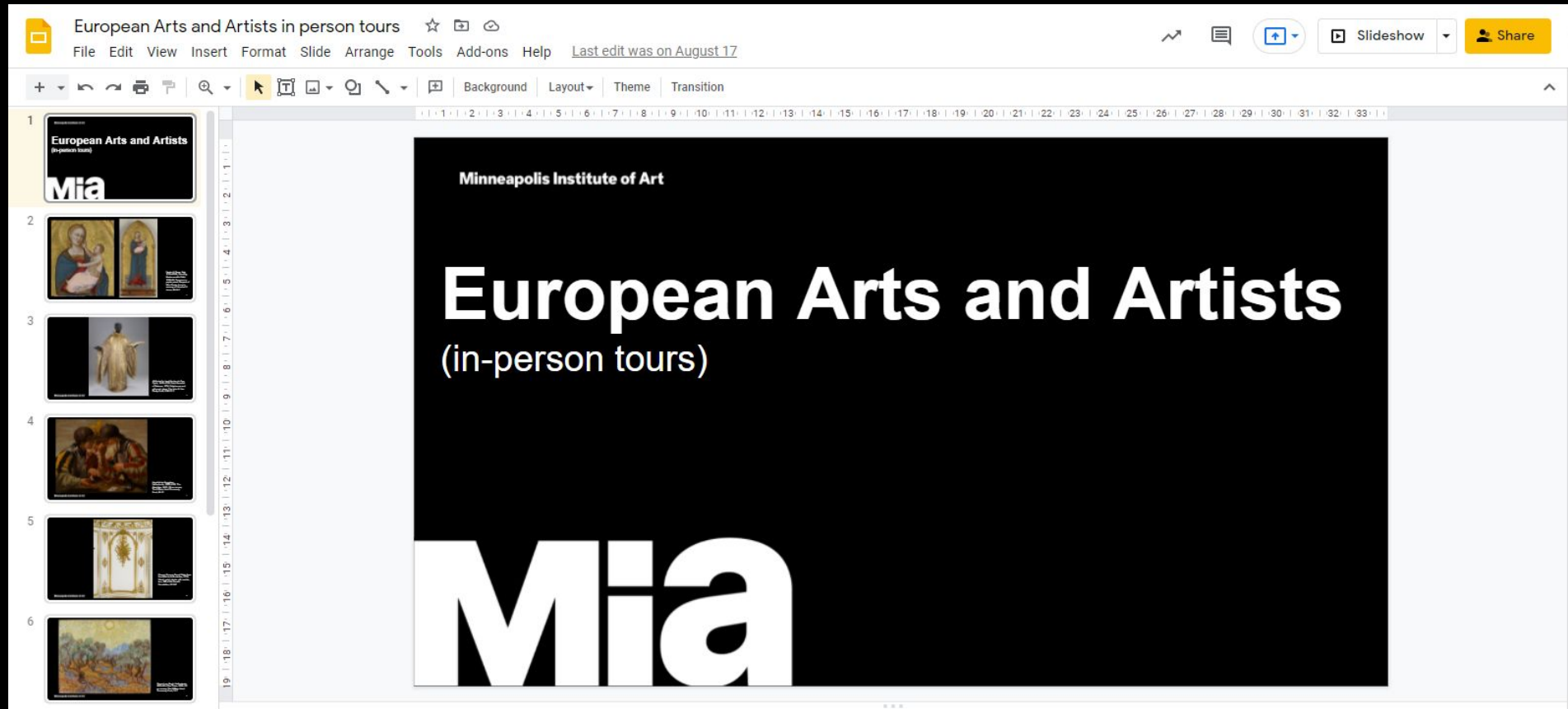


## Update on Mia Guide badges:

- The arrival of the new blank badges has been delayed due to supply chain issues. Tentative ETA by end of year.
- Security staff has temporarily been displaced due to repairs on the sewer line, and they will not have access to their offices for 4 to 6 weeks.
- We hope to start scheduling badge photos at the beginning of February.

Training for new tours: Tour Breaks coming in 2022!

Staff will provide a virtual walk-through of in-person school tour topics, so this will be a great way in which to learn or review content.



## **School guide role at Mia**

Through discussion and reflection on a tour, students should see, think, and wonder in our galleries. Choice, creativity, curiosity, and critical thinking should be supported and encouraged.

Most of all, they should feel welcome in our spaces, be included in discussion or activities, and have fun, leaving them with a desire to return with family and friends.

The children you tour are the future of this museum. As Mia School Guides, you are integral to connecting students to the artists and cultures represented within the collection, allowing us to accomplish our mission of making the art accessible to all.

## **Adult guide role at Mia**

Welcome all visitors to Mia and invite them to share their own perspectives while viewing works of art together. Talk about the art!

Engage visitors in conversations on timely, relevant topics with you and other tour participants.

Support and encourage choice, creativity, curiosity, and critical thinking. See how works of art inspire wonder.

Help people connect with the art and one another. Consider how art is a vehicle for bringing people together.

Discover how issues explored by artists have relevance to our lives today.

# What does this mean for Mia guides?

Mia is committed to our volunteer guide program and we acknowledge what you bring to our visitors.

As staff, we show that commitment through the training we offer and the opportunities we provide.

Our goal is for you to feel as prepared as possible to engage visitors in discussing relevant topics and answering sometimes difficult questions in a changing world.

# What does this mean for Mia guides?

In order to be relevant and vital to their diverse audiences, museums must create an inclusive culture, promote equity, and recognize their surrounding communities' assets, needs, and interests. As museum educators, we are committed to our own learning in order to help our guides develop and build necessary touring skill sets that incorporate greater cultural fluency and responsiveness.

# Stretch Break



Ohara Shōson; Publisher: Kawaguchi Jirō;  
Engraver: Maeda Kentarō; Printer: Komatsu  
Wasankichi, Japan, 1877–1945, Cat and  
Goldfish, 1928–30, Woodblock print; ink and  
color on paper, Gift of Paul Schweitzer,  
P.77.28.66

**Minneapolis Institute of Art**

**Art and Human Connections:  
Social and Emotional Learning  
In-person Tour**

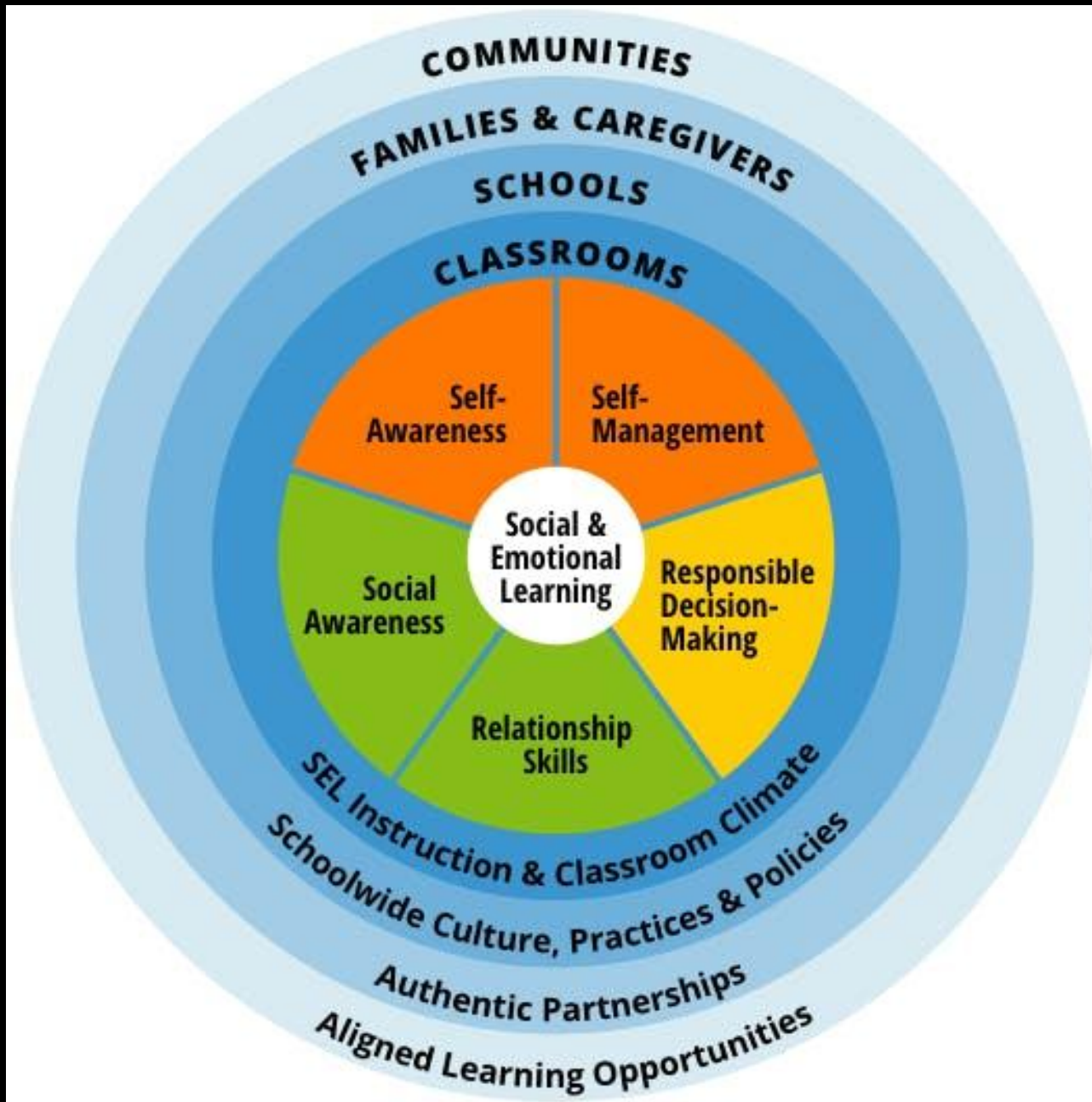
**Mia**



# What is Social Emotional Learning?

CASEL (The Collaborative for Academic, Social, and Emotional Learning) defines social emotional learning as “an integral part of education and human development. SEL is the process through which all young people and adults acquire and apply the knowledge, skills, and attitudes to develop healthy identities, manage emotions and achieve personal and collective goals, feel and show empathy for others, establish and maintain supportive relationships, and make responsible and caring decisions.”

..... SEL can help address various forms of inequity and empower young people and adults to co-create thriving schools and contribute to safe, healthy, and just communities.



# Art and Human Connections Tours

Self Awareness and Social Awareness

Emotion Recognition (and naming)

Kindness

Relationships (including how our behavior impacts others)

Collaboration

Cultural Pride

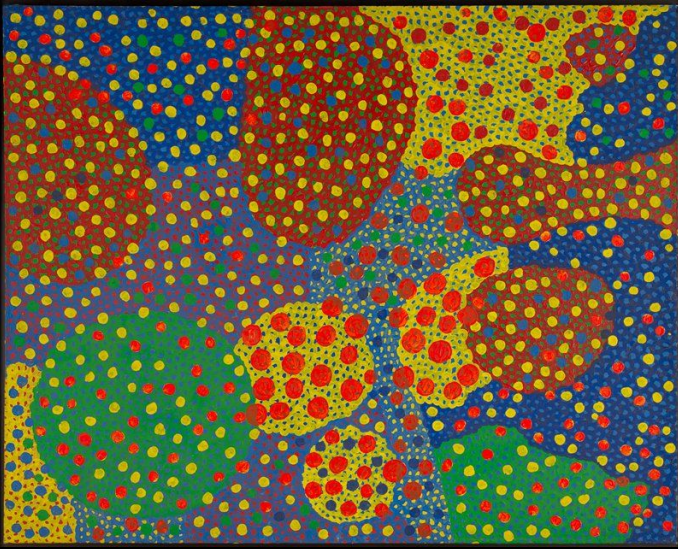
Appreciating Differences

Appreciating Multiple Perspectives

Empathy

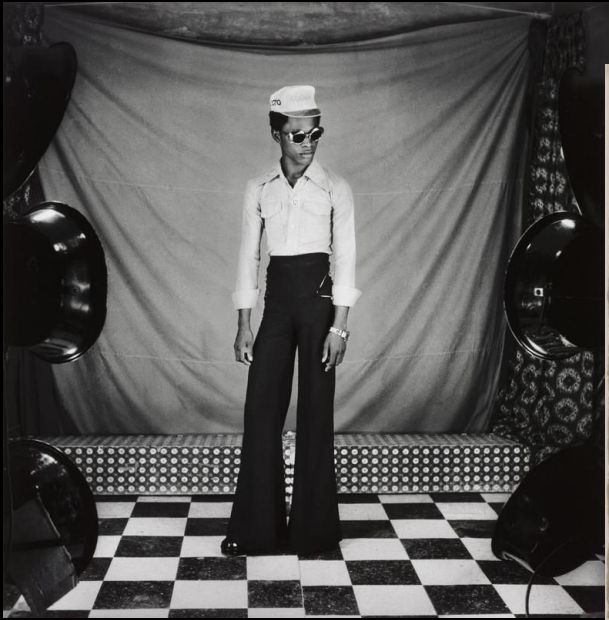
Perspective Taking

Compassion and Action

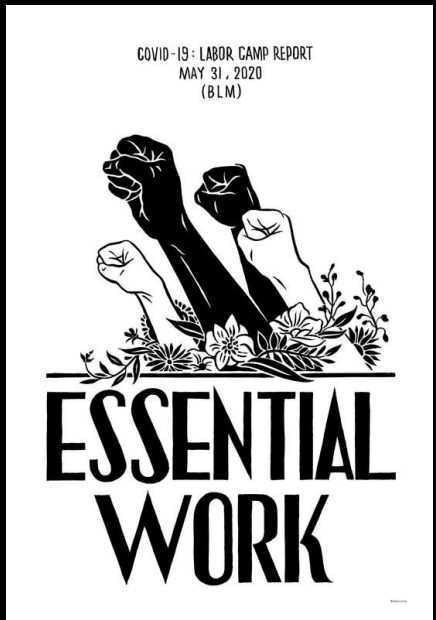


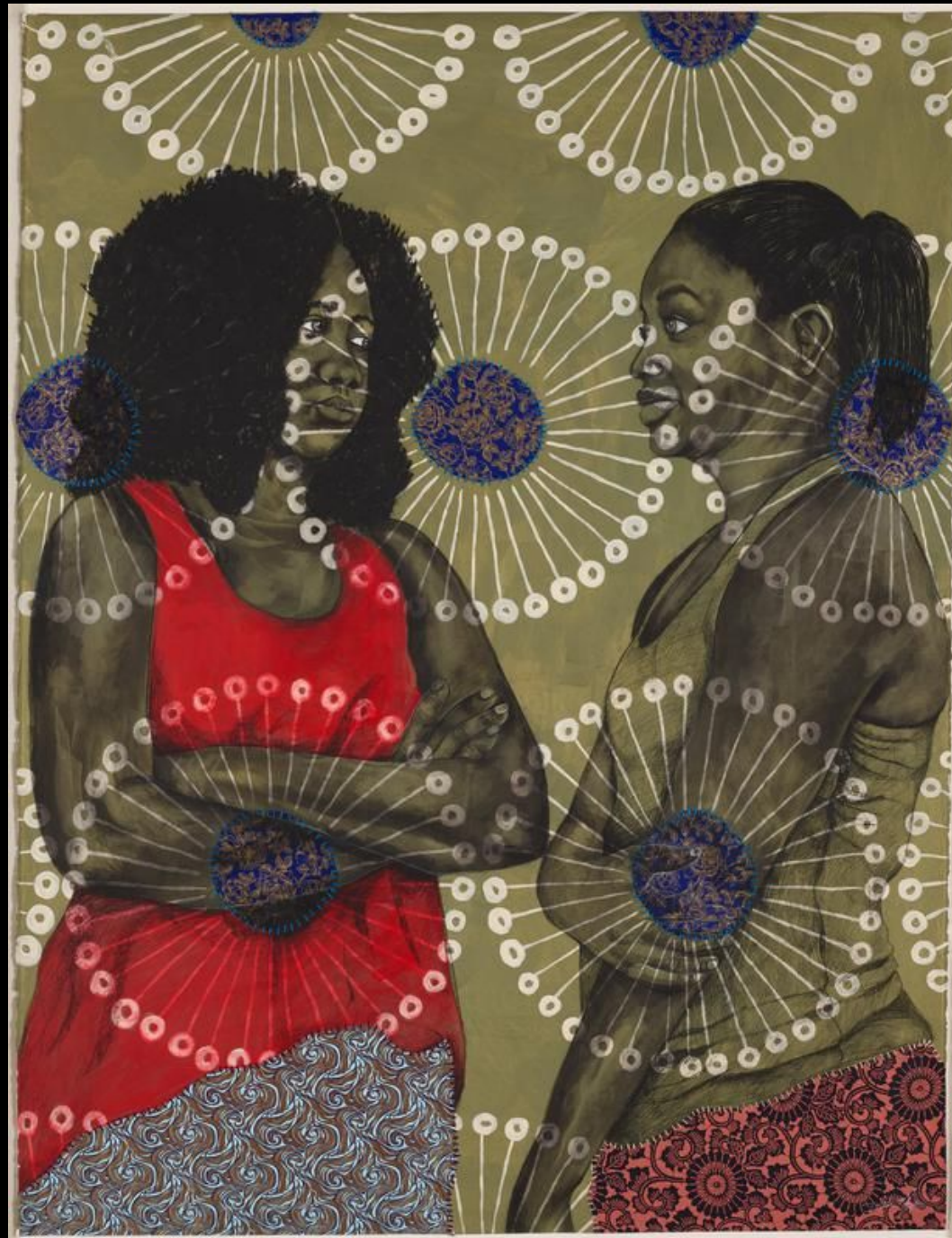
**Minneapolis Institute of Art**





**Minneapolis Institute of Art**







## **Between Sisters, Delita Martin**

Look closely, describe what you see.

Look at the woman on the right, what is her facial expression saying? What do you see that makes you say that? Stand up and try posing like this woman crossing you arms and with her facial expression. How does it feel to you?

Let's look at the woman on the left. What is her facial expression saying? Why do you say that? Stand up and try posing like this woman and use her facial expression. How does it feel to you?

How does their body language help show us how they are feeling?

Have you ever experienced this feeling or emotion?



How are these women related to one another? Why do you think this?

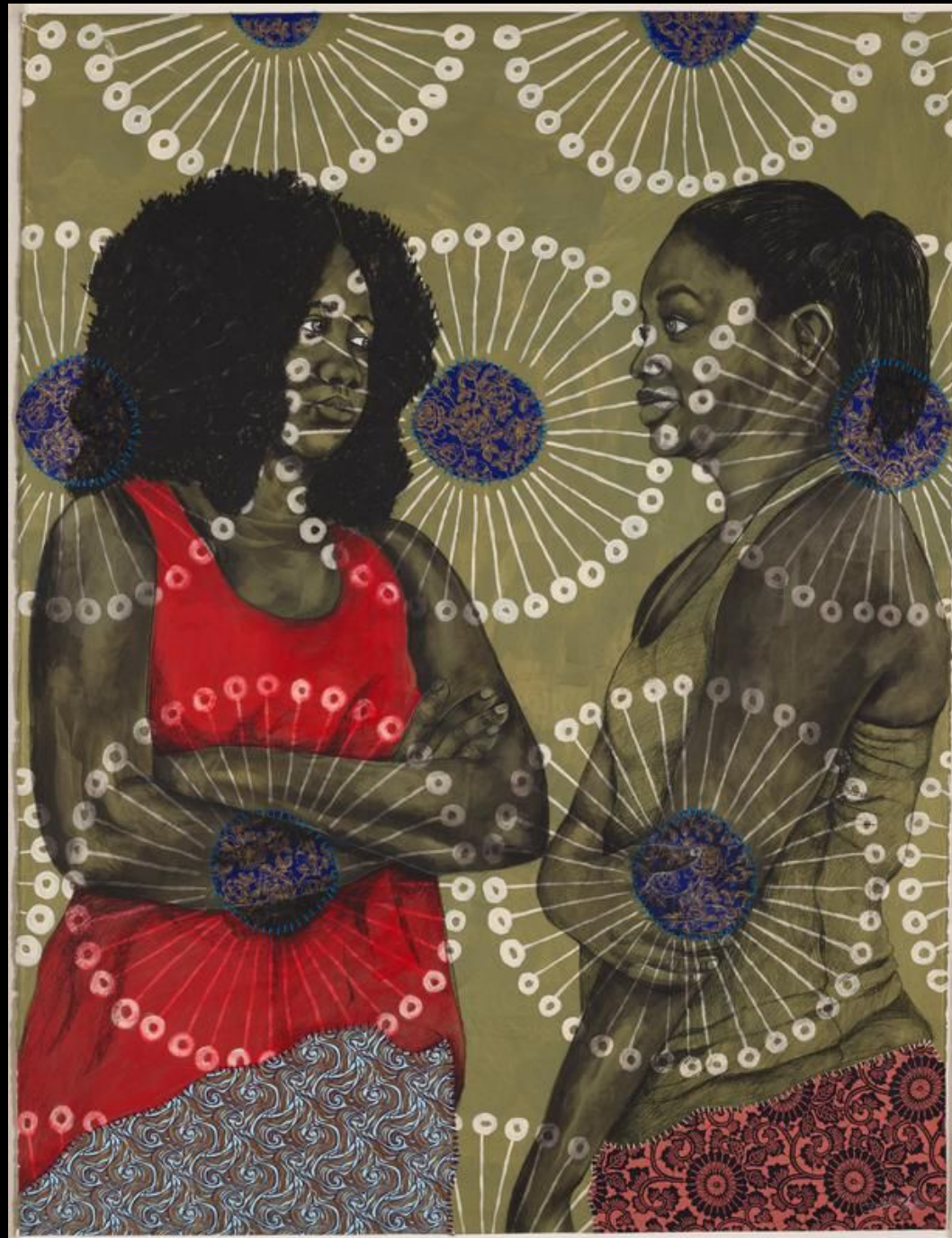
How do these women feel about each other? Do you have people you feel this way about?

What else do you see in the picture that you are curious about? What do you think about it?

How do the circular patterns make you feel about the image? Why? How do the colors make you feel? Why? The artist says the circles represent the moon and females. She is showing the women as important role models in their families and communities.

Do you have important role models in your life? Who are your role models? What makes a good role model?

Martin is also storytelling which is a tradition in her family. You have participated by telling stories of how you see the women in the artwork. See the stitching around the circles-quilting is a tradition in Martin's family and she honors her family by including the tradition. Do you have any traditions in your family?



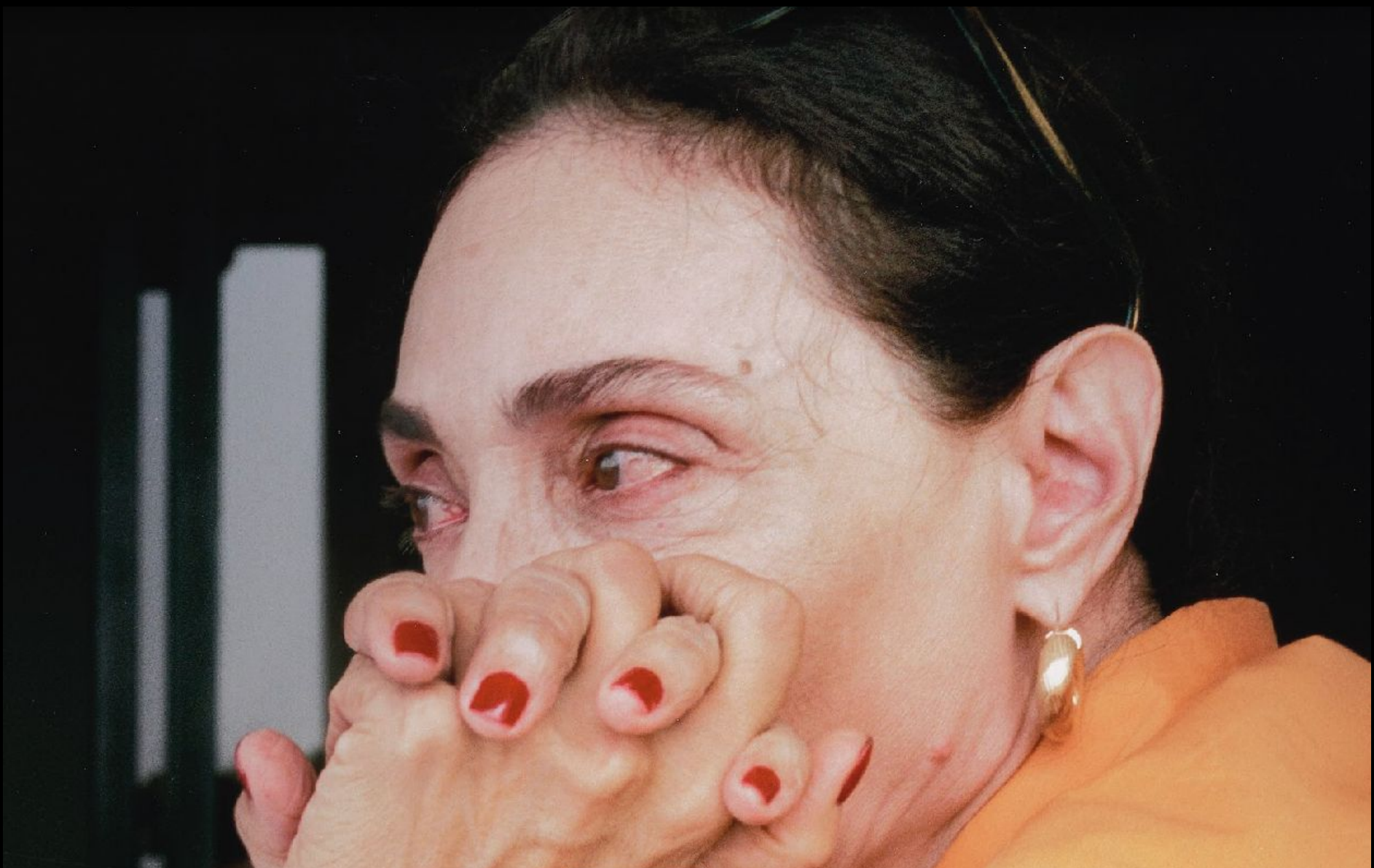
Delita Martin, *Between Sisters*,  
2018, Acrylic, charcoal, colored  
pencil, decorative papers, and  
hand-stitching on paper, 2019.35.2,  
© Delita Martin



[http://galeriemyrtis.net/wp-content/uploads/2015/12/delita\\_martin\\_in\\_studio-1.jpg](http://galeriemyrtis.net/wp-content/uploads/2015/12/delita_martin_in_studio-1.jpg)











Rania Matar, *Brigitte and Huguette*, Ghazir Lebanon, 2014, Archival pigment print on baryta paper, T2019.100.1, © Rania Matar. All rights reserved. Courtesy of the Artist and Robert Klein Gallery.



Photo: ICA Boston

# Happy Holidays!



Utagawa Hiroshige II; Publisher: Fujiokaya Keijirō; Carver: Koizumi Kanegorō, Japan, 1826–69, Evening Snow on Mount Hira, 1859, 1st month, Woodblock print (nishiki-e); ink and color on paper, P.75.51.434