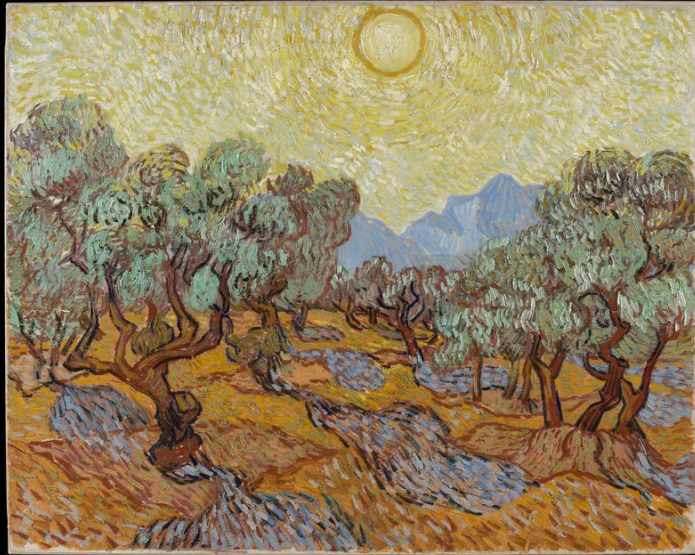


Minneapolis Institute of Art

Stop and Chat training



Mia

Vincent van Gogh, Netherlands, 1853–90, Olive Trees, 1889, Oil on canvas, The William Hood Dunwoody Fund, 51.7
Japan, late 19th-early 20th century, Festival kimono decorated with carp ascending a waterfall made in Akita Prefecture (detail), cloth: cotton; shibori (shape resist), 2019.20.84

**Stop and Chat daily, Tuesday through
Sunday, 1 to 3 PM and Thursday
evenings, 6 to 8 PM.
2 guides for each shift.**

July 7 to September 1

Storage: At the VE desk at the 24th Street entrance, by the women's bathroom.



Placement: To the right of the selfie station, between the columns. Two gallery stools will be on top of the cart.



The cart will have an attendance clicker and Ask Me buttons.

Record the attendance at the end of the shift (attendance sheets are posted on the bulletin board in the guide lounge).



Maps packet





Unknown Nivkh, Russia, Asia, Woman's fish-skin festival coat (hukht), 19th century, Cloth: fish skin, sinew (reindeer), cotton thread; appliqué and embroidery, 2019.20.31



Ainu



Portrait of Ainu people on Hokkaido, 1929-1930, photo by Stan Bergman, Courtesy of Etnografiska Museet, Stockholm, Sweden



Left, Portrait of Ainu people on Hokkaido, 1929-1930, photo by Stan Bergman, Courtesy of Etnografiska Museet, Stockholm
Right, Unknown Ainu, Japan, Attush robe with light-blue stripes, 19th century, Cloth: elm-bark fiber; cotton striping, appliqué, and embroidery, 2019.20.21.

ANATOMY OF A KIMONO

NAGAJUBAN

長襦袢
undergarment

A cotton or synthetic silk robe is worn under the kimono and above one's undergarments to prevent the wearer from having to wash the kimono too often.

KANZASHI

簪
hair pin

This is an ornamental flower that is worn in a traditional Japanese hairstyle. The choice of flower can often reflect the season (a peony in spring, and so on).

OBIAGE

帯揚げ
sash bustle

Tied around the waist after tying the obi, the thick, soft *obiage* sash is knotted and then tucked beneath the wider obi to support the large knot on the back.

OBI

帯
sash

Varying in width and often embroidered by hand, the *obi* can sometimes cost more than the entire outfit. The knot (*musubi*) in the back can differ depending on the level of formality and age of the wearer.

OBIJIME

帯締
cord

Often braided, the *obijime* is a cord tied around the center of the obi sash and helps secure the bow of the obi located at the back of the garment. One origin story describes the cord as first being used by samurai to hold their swords, and a geisha or maiko borrowing it as playful decoration for her own sash.

TAMOTO

袂
sleeve

The flowing sleeves of a kimono tell a story of the wearer: a kimono with longer, draping (almost to the floor!) sleeves is called a *furisode* and is worn only by unmarried women. Married women wear kimonos with regular-length sleeves, called *tomesode*.

ZOURI

草履
sandals

While the thong sandals worn with kimono were traditionally made from straw, today they are usually made from lacquered wood, with the most formal ones covered in a luxurious fabric like brocade.

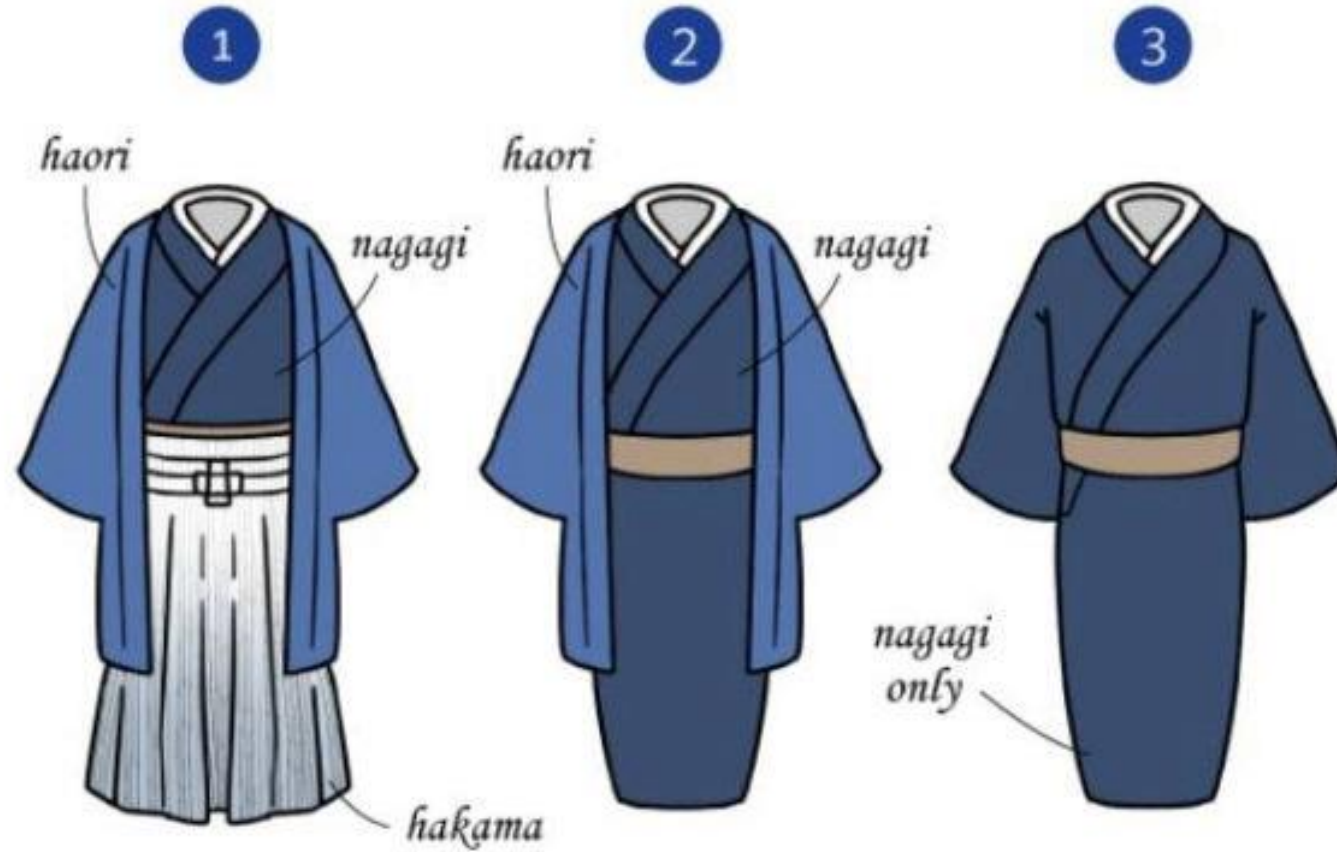
TABI

旅
socks

These traditional Japanese socks are made with an indentation between the first two toes so they can be worn comfortably with sandals.



Kimono for women
(Image: ANA Experience Class)



Different styles for formal or casual wear. Image: LIVE Japan

Formal ←————→ Informal
High Rank ←————→ Low Rank



▪ Undergarment

▪ Jacket / Haori

▪ Coat cord

▪ Obi belt

▪ Kinchaku pouch

▪ Geta sandals
▪ Setta sandals
▪ Tabi socks

Kimono for men, with accessories.
Image: Kimono yukata market sakura.

Samples of wood, tatami, and paper

Fire fighters

Kobayashi Kiyochika, Great
Fire at Ryōgoku Drawn from
Hamachō, 1881, Published by
Fukuda Kumajirō
Woodblock print (nishiki-e); ink
and color on paper,
2019.139.77. Image: Artsy.net



明治五年 長谷川十九郎 米沢正百三子
月 日 出版人 福田熊治良 画工 小林清親

大田西寫公河漢 大出日六廿月一年四拾明



Left: Tsukioka Yoshitoshi, Moon in the Smoke, from the series One Hundred Aspects of the Moon, February 1886, Published by Akiyama Buemon, Woodblock print (nishiki-e); ink and color on paper. Image: Art Gallery of NSW. Right: Unknown Japanese, Japan, Fireman's short coat (hikeshi-banten) [from a set], 19th century, Cloth: cotton; sashiko (decorative reinforcement stitching), tsutsugaki (freehand resist), 2019.91.27.1



Unknown Japanese, Japan, Fireman's parade leather coat (kawabaori) with Ōhisa family crest, 19th century, Cloth: deerskin; smoked resist, 2019.20.120. Above, Hosai Bado, Fire Fighters' Brigade (artelino.com)



Indigo: Shibori examples, including hari hitta shibori





Unknown Japanese, Japan, Festival kimono decorated with carp ascending a waterfall made in Akita Prefecture, 19th–early 20th century, Cloth: cotton; shibori (tie-dyeing), indigo dye, 2019.20.84. Above, Kumo Shibori



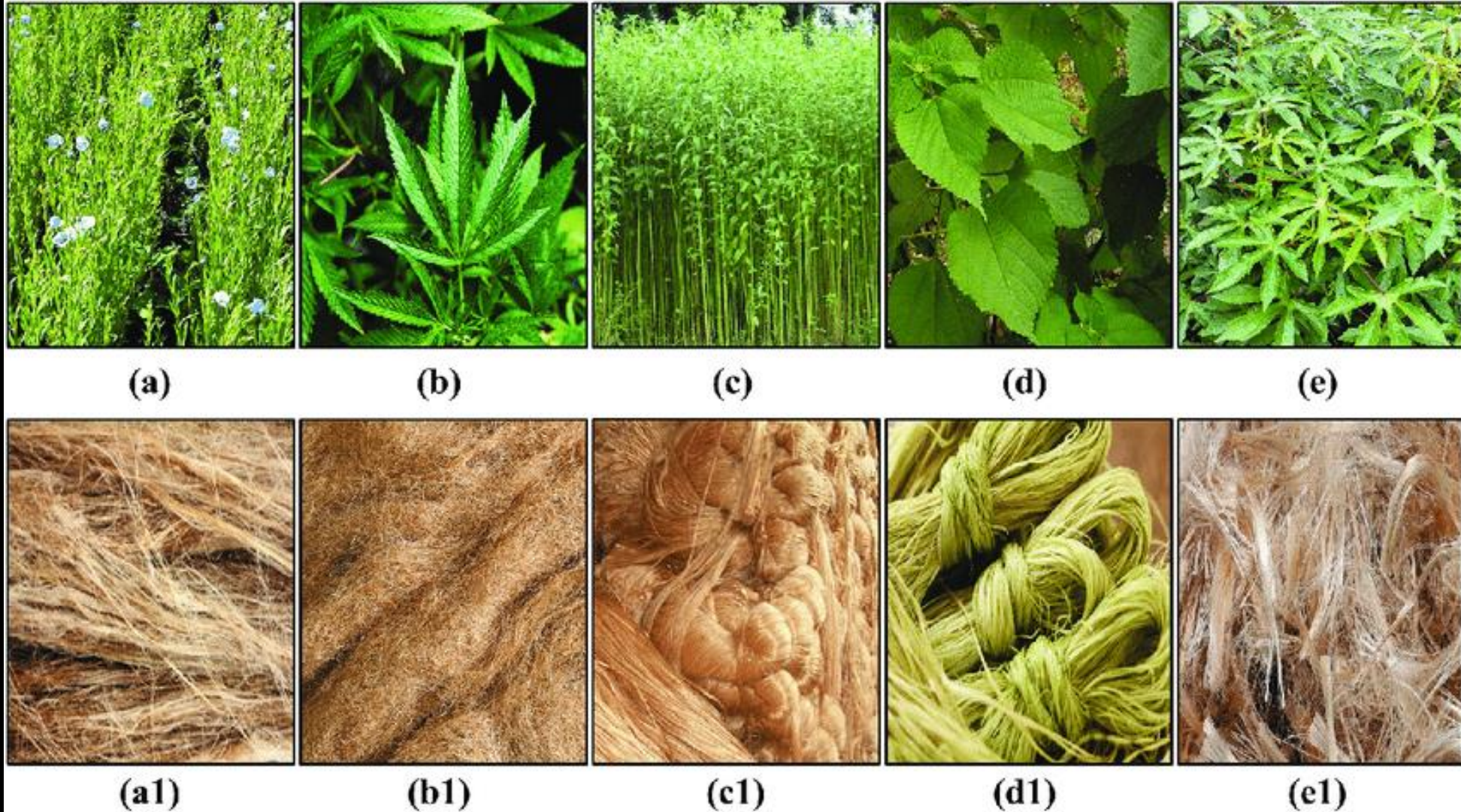


Tending to a field of Japanese indigo plants (Image: Japan Travel); Japanese indigo plant leaves fermented to produce sukumo (Japan Travel); Vats of indigo dye, in Konan, Japan (Image: Village to Table Stories); Dyeing cloth, Konan, Japan (Image: Village to Table Stories)



Unknown maker, Arimatsu, Aichi Prefecture, Japan, Half-length undergarment (hanjuban), early 20th century, Cloth: cotton; shibori (tie-dyeing), indigo dye, 2019.20.83

Plants and fibers, and techniques



Digital images of different bast fibers: (a-a1) flax fibers, (b-b1) hemp fibers, (c-c1) jute fibers, (d-d1) ramie fibers, and (e-e1) kenaf fibers. (MD Salauddin Sk, Journal of Natural Fibers)



Unknown Japanese, Japan, White workwear (noragi) with dark blue appliqué, 20th century, Cloth: fuji (wisteria), cotton, hemp; appliqué, sashiko (decorative reinforcement stitching), 2019.20.100. Above, wisteria tunnel, Japan (Instagram) and wisteria plant fibers (Nathan Somers Textiles)

Minneapolis Institute of Art





Unknown Japanese, Japan, Safflower-colored child's kimono, 19th–early 20th century, Cloth: hemp; safflower dye (beni), 2019.20.97. Above, safflower (Midgaards Have); safflower petals turn red, after drying and fermenting (<https://nitta-yonezawa.com/en/benibana>)





Top left, Japanese banana fiber plant (Basho), Wikipedia.
Top center, Stripped fiber, Basho-fu, Photo: Murabayashi Chikako
Top right, Weaving the fiber threads, Kogei Japan
(Bottom image) Women in Kijoka, prepping the fiber to be thread, Google Arts and Culture



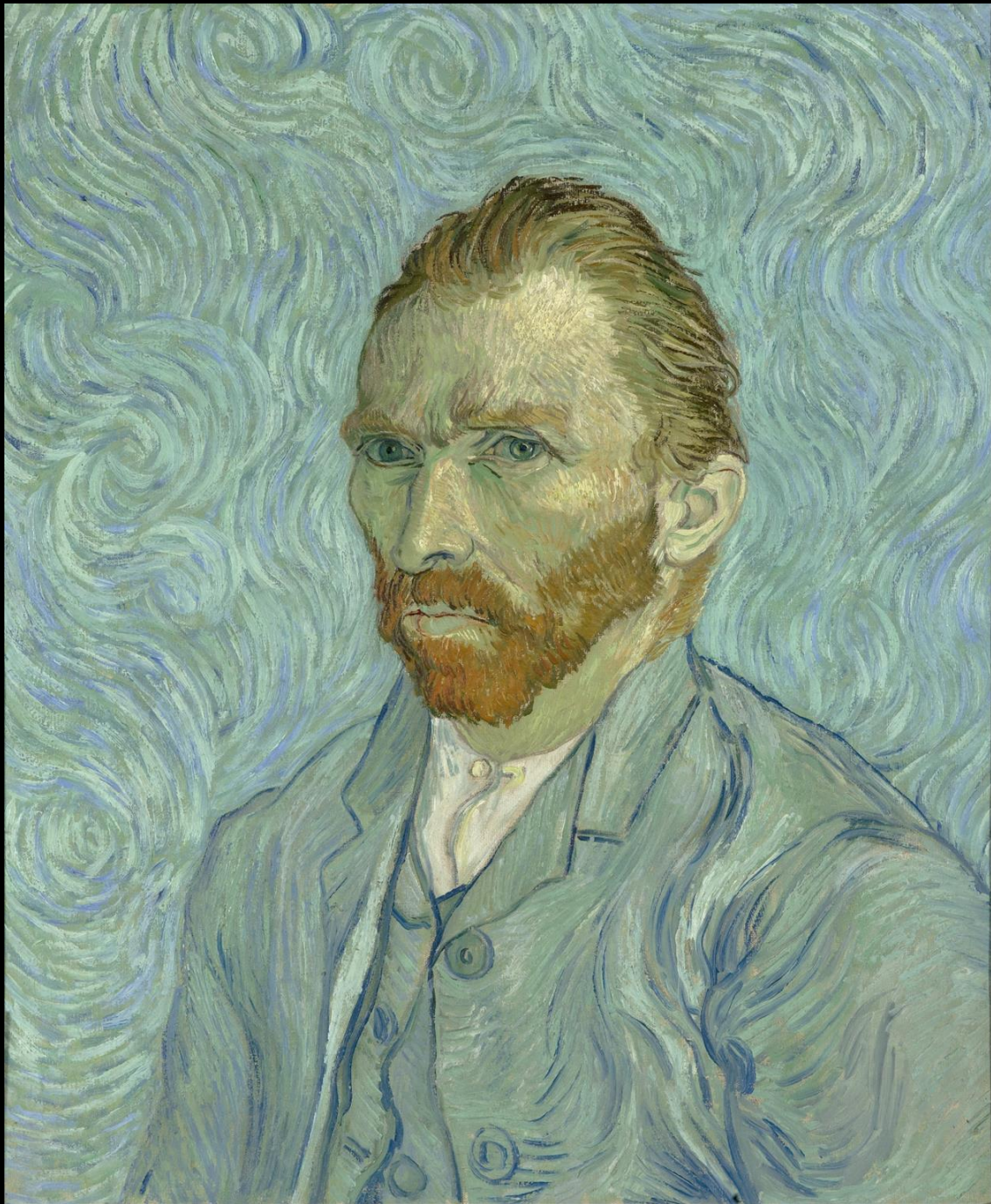
Unknown Ryukyuan, Japan, Light brown-ground Ryūkyūan robe (ryūso) with ikat (kasuri) stripes, 20th century, Cloth: japanese fiber banana (bashō) and cotton; two-color tate-gasuri (warp ikat), 2019.20.182. Above, women of Kijoka, prepping the fiber, Google Arts and Culture





Right, Bingata technique, using stencils (Photo courtesy of the Ryukyu Bingata Preservation and Expansion Consortium)

Van Gogh and the Olive Groves





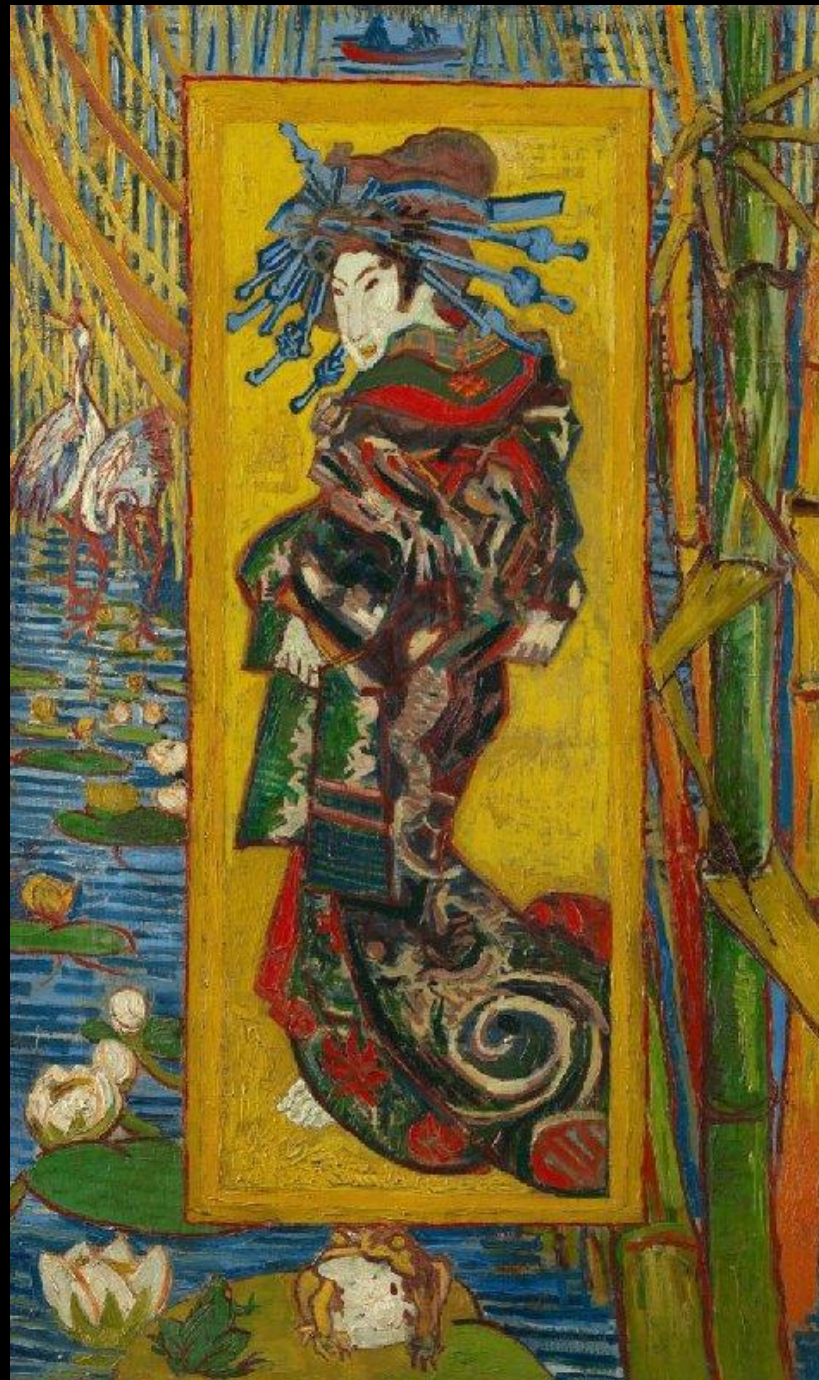
View from his window in St. Remy.

Grid of Olive Grove paintings
(15)
And 6 paintings in exhibition

Samples of canvas to show
brushstrokes, plus some detail
photos

Labels and panels

Van Gogh and Japanese Art



Van Gogh and Japanese Art



Questions?