

## Storage of Stop and Chat cart and garment forms: updated 7.7.22

We are now storing the Stop and Chat cart and the two garment forms in the closet behind the freight elevator doors (see next page). This is a closer option for storage, but you will need to ask a guard to open the door to the elevator area and also open the door for putting the materials away.

We have added two wooden forms to the Stop and Chat station to hold the kimono and the fireman's jacket.

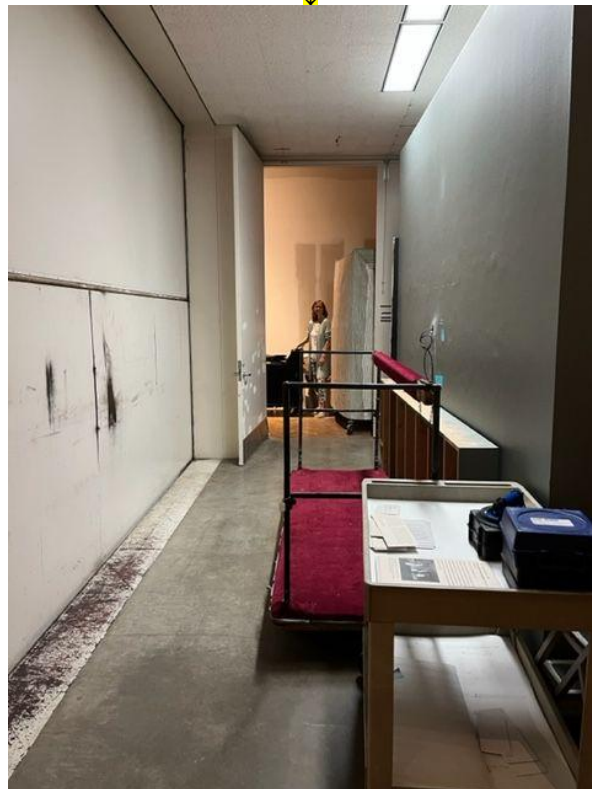


The poles for the arms of the garments **are not** fixed to the stands. The long gray pole is for the fireman's jacket and the shorter brown pole is for the silk kimono. The fireman's jacket can be tied and the kimono has a snap to the side.



We found it worked to put the garments behind the cart as the arms are so wide.

Once you go through the freight elevator doors, you will see a room at the end of that corridor:



Store everything at the end of that corridor, in the room. Put the garment poles along with the gallery stools on the top of the cart. Do not leave any Stop and Chat materials to the right in the door entry as the Facilities and Registration staff need use of that space as they bring machinery through.



If you encounter any problems, let us know. Thank you!