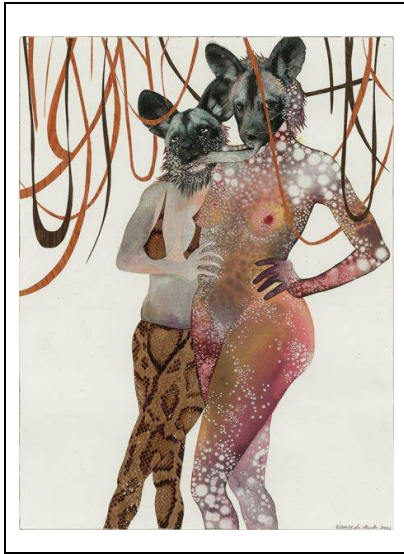


Intertwined [Click here to enter text.](#)

---

## Photo of Object (optional)



---

## Object Information

**Artist:** Wangechi Mutu

**Country:** US

**Date of Object:** 2002

**File Created:** 6/13/2022

**Accession Number:** 2021.115.6

**Author of File:** Mary Ann Wark

**Material/Medium:** Watercolor with collage on paper

**Reviewer of File:** [Click here to enter text.](#)

**Department:** Global Contemporary Art

**Last Updated/Reviewed:** [Click here to enter a date.](#)

**Culture:** Kenyan (active US) b 1972

---

## Tour Topics

African American, Beauty, Fashion/Dress, Gender roles, Identity, Power/status, Race/Ethnicity, Symbolism

---

## Questions and Activities (list 3 to 4 sample questions here):

How are the two figures the same?

How are the two figures different?

What did she use to collage?

What types of materials are intertwined?

What ideas is she intertwining?

What do the wild dog heads add to the figure?

What is the “tongue”?

How does she think Black women are viewed by the West?

---

## Key Points (Form: subject matter, medium and techniques of manufacture, style, etc.)

**Subject matter:** 2 women: part human and part animal.

One dressed in “sexy” animal skins and one nude but textured with watercolor white drips

Temptress caricatured and exotic

Desired or despised put on female body

two black women: idealized as western models created with fashion magazine female figures and National Geographic magazine: African wild dog heads

contradictions of role expectations: western media/sex goddess vs black women

Legs on left figure and bra: leopard skin

Shiny brown ribbons

“Simultaneously embody the disjointed experience of navigating transnational identity, contemporary Africa, and Western preconceptions.”

**Medium:** photography

Watercolor : texture makes you look longer

Looks like glitter on body on right

Collage: cut outs from western fashion magazines of models

Cut outs from National Geographic of wild dogs

Cutouts of animal skins

Shiny ribbon, look like leather

---

## Key Points (Context: use, history, cultural information, artist bio, etc.)

**African wild dog/ Painted dog:** endangered, social/in packs, has stiff bristle hairs and no underfur, strong social bonds, breeding limited to dominant female

**African women** idealized as wild, animal-like, sexualized by Western culture/photography

**Artist is healer:** first healing self and bit by bit to heal others: what it means to be a “colonized other”

Artist grew up in 70's and 80's in Nairobi: lots of western and Christian culture in movies and TV

Catholic school: all women, feminine energy, teachers, girls, virgin Mary

Race: uses animals and energy of animals and plants in her work

African history wasn't taught: the other was photographed and consumed/ impacted her as **colonized other**

**Photography** : History of photography and colonization grew and imparted “other” : photographed and packaged and consumed

She believes that photography dances behind her paintings

Artist bio: b Nairobi 1972. Her father's paper-import business kept her supplied with materials.

1991 IB United World College of the Atlantic, Wales 1991

1996 BFA, Parsons and then Cooper Union for the Advancement of the Arts and Science, NY

2000 MFA Sculpture, Yale School of Art, New Haven CT

Moved to Brooklyn and established a studio.

Nairobi studio established in 2016

2019 *The New Ones ,will free Us*: MET

2022 Storm King (Hudson Valley) several sculptures

After graduation from Yale, started a series of mixed media, ink and collage on paper works called the “Pin-ups”. The women in this series were dressed in fanciful costumes, when they were dressed at all, and they were simultaneously alluring and gruesome. Connection to Sierra Leone war victims...collage as a premonition....

“Her ability to insinuate meanings that are political, aesthetic and psychological, without ever declaring what the images are really about, is unique. “

Mother to 2 girls.

OTHER MEDIA: installations, animated film, fabric, photographs, sculpture

---

## Current Mia Label Information (optional)

Click here to enter text.

---

## Sources of Information and/or Prop Ideas (photos/videos)

<https://youtu.be/TaL8zDealmU>

<https://www.britannica.com/print/article/1995797>

[https://en.wikipedia.org/wiki/Wangechi\\_Mutu](https://en.wikipedia.org/wiki/Wangechi_Mutu)

<https://art21.org/artist/wangechi-mutu/>

<https://www.gladstonegallery.com/artist/wangechi-mutu/biography>

<https://bordercrossingsmag.com/article/resonant-surgeries-the-collaged>