

Minneapolis Institute of Art

Brown Bag: Art Adventure and other tour updates



Mia

artsmia.org

Introducing Bridget Gallagher-Larkin, our new Student and Teacher Learning Specialist!

Bridget runs the Art Adventure program with the schools and parent/adult volunteers (Picture People).

[TICKETS](#)[CALENDAR](#)[DONATE](#)[EXHIBITIONS](#)[ART + ARTISTS](#)[VISIT](#)[PROGRAMS](#)[SUPPORT](#)[ABOUT](#)[SHOP](#)

Art Adventure

Art Adventure is a program that engages students with artworks from the Minneapolis Institute of Art's collection and through the support of thousands of trained, school volunteers, sends visual arts into K-6 classrooms across Minnesota and beyond. The program encourages creativity, critical thinking and global awareness through in-depth explorations of art across various cultures and time periods. Art Adventure is an opportunity for students to experience art up close and personal through reproductions, technology and touch-and-feel props.

Support provided by The Eugene U. and Mary F. Frey Family Fund of the Saint Paul Foundation and Midwest Radiology Foundation.

This year, the following sets have been popular school requests:

Based on current book orders and kit reservations.

Popular Kits:

Let's Celebrate Life

Sources of Strength

People and Their Environments

Least Popular Kits:

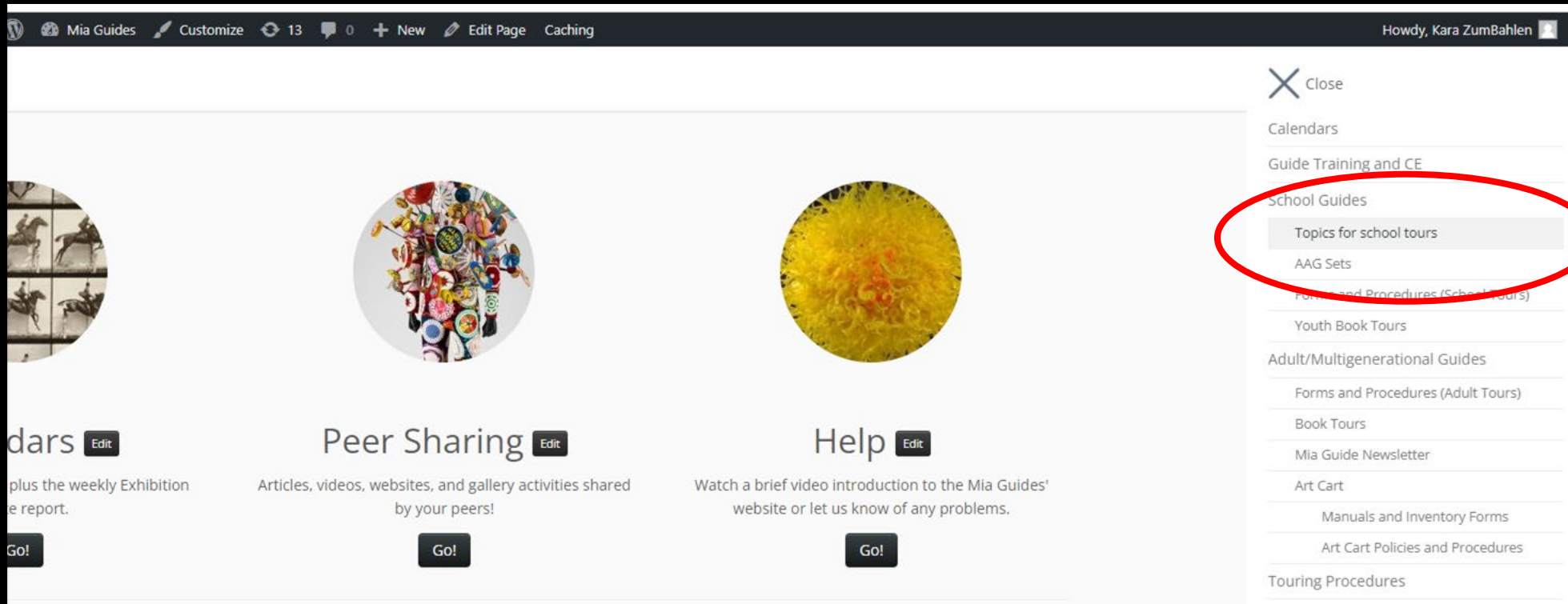
Artists' Inspirations

Family, Friends, & Communities

Dressed for the Occasion

As of 9/25: 556 books shipped/44 schools

- As a school guide, you could be assigned a topic tour or an Art Adventure tour.
- Information on tour topics (suggested artworks, key ideas and questions) as well as Art Adventure sets are posted on the guide website ([link](#)) under School Guides on the main menu.



- To find the current locations and routes for the Art Adventure sets, either search “Art Adventure routes” or look in School Guides/Forms and Procedures.
- Current routes and locations are also posted on the Guide Lounge bulletin board.

The screenshot shows the Mia Guides website interface. At the top, there is a navigation bar with the following items: Mia Guides, Customize, 13, 0, + New, Edit Page, and Caching. On the right side of the navigation bar, it says "Howdy, Kara ZumBahlen" with a user profile icon. Below the navigation bar, there are three circular images: a horse, a colorful bouquet of balloons, and a yellow textured surface. Below each image is a button labeled "Edit".

On the right side of the page, there is a sidebar menu with the following items:

- Close
- Calendars
- Guide Training and CE
- School Guides
 - Topics for school tours
 - AAG Sets
 - Forms and Procedures (School Tours)**
 - Youth Book Tours
- Adult/Multigenerational Guides
 - Forms and Procedures (Adult Tours)
 - Book Tours
 - Mia Guide Newsletter
 - Art Cart

At the bottom of the page, there are three sections:

- Calendars** Edit: plus the weekly Exhibition
- Peer Sharing** Edit: Articles, videos, websites, and gallery activities shared
- Help** Edit: Watch a brief video introduction to the Mia Guides'

- On any assignment, tour details will be included, listing the guides (and lead), the tour contact, and any requests from the tour contact. Click on View Details in StaffSavvy to see these details. Thanks for your patience as we transition back to StaffSavvy!

My shifts

View: **Upcoming** Previous Shift Calendar

Date	Event	Times	Skill	Department	Info
Wed 9th Nov '22	Visit - Virtual PublicTour for Minneapolis Institute of Art: Botticelli and Renaissance Florence: Masterworks from the Uffizi	2:00pm - 3:00pm	A/U/M TS	Virtual Adult 1	OPTIONS VIEW DETAILS
Sun 20th Nov '22	Visit - Virtual PublicTour for Minneapolis Institute of Art: Botticelli and Renaissance Florence: Masterworks from the Uffizi	2:00pm - 3:00pm	A/U/M TS	Virtual Adult 1	OPTIONS VIEW DETAILS

- If assigned a Art Adventure set that is new to you, check out the resources on the guide website, reach out to fellow guides with experience touring the topic, and contact Kara or Debbi to discuss the tour and do a walkthrough.
- Help is always available, so just reach out!

Thomas Sully, Portrait of George Washington, 1820, Oil on canvas

The William Hood Dunwoody Fund, 32.12



Let's talk tour routes!

- Art Adventure routes are updated and posted on the guide website, [link here](#). If you are lead, you need to assign routes to the other guides. All guides must follow the routes to avoid overlap with other groups.

Art Adventure Routes (updated 9/28/2022)							
Amazing Animals in Art							
1		2		3		4	
Vessel in the form of a fish	260	A "Bear" Chance	301	Horse	208	Flock of Cranes	
Leopard Aquamanile	250	Flock of Cranes		A "Bear" Chance	301	Gold Lion Statuette	243
Gold Lion Statuette	243	Horse	208	Leopard Aquamanile	250	Vessel in the form of a fish	260
Horse	208	Gold Lion Statuette	243	Vessel in the form of a fish	260	Leopard Aquamanile	250
Flock of Cranes		Leopard Aquamanile	250	Gold Lion Statuette	243	A "Bear" Chance	301
A "Bear" Chance	301	Vessel in the form of a fish	260	Flock of Cranes		Horse	208
American Stories							
1		2		3		4	
Winter Count		Writing Desk		Kids Playing, Frogtown		Billboard	371
Evening Concert	302	Winter Count		Writing Desk		Kids Playing, Frogtown	
Portrait of George Washington	305	Evening Concert	302	Winter Count		Writing Desk	
Billboard	371	Portrait of George Washington	305	Evening Concert	302	Winter Count	
Kids Playing, Frogtown		Billboard	371	Portrait of George Washington	306	Evening Concert	302
Writing Desk		Kids Playing, Frogtown		Billboard	371	Portrait of George Washington	305

- Meet your groups in the Target Atrium. The Target entrance opens at 10 AM for school groups and closes at 3 PM.
- Our school tour greeters are Nasro Rashid and Johana Cornejo Cisneros.



- For 10 AM tours, the Target Atrium doors will open at 9:50 AM so groups can be prepped to go in the galleries right at 10.

Lead guide responsibilities

Step 1: Get in touch with the tour contact promptly after receiving the tour confirmation.

For those guides who are NOT lead, trust that the lead is reaching out to the contact. As we know from past experience, teachers often do not reply very quickly--and sometimes will not reply at all.

Note on teacher requests: Do the best you can!



Lead guide responsibilities

Step 2: Call or email all guides assigned to the tour at least *ten days to two weeks* before the tour. (Note: If you use e-mail, ask the guide/s to confirm your message to ensure the information is received. Updated rosters will be posted on the bulletin board and will be sent to guides next week.)

Even if you have not heard from the contact, reach out to establish communication with your group within this timeframe.



Step 2: Continued...after you hear from tour contact:

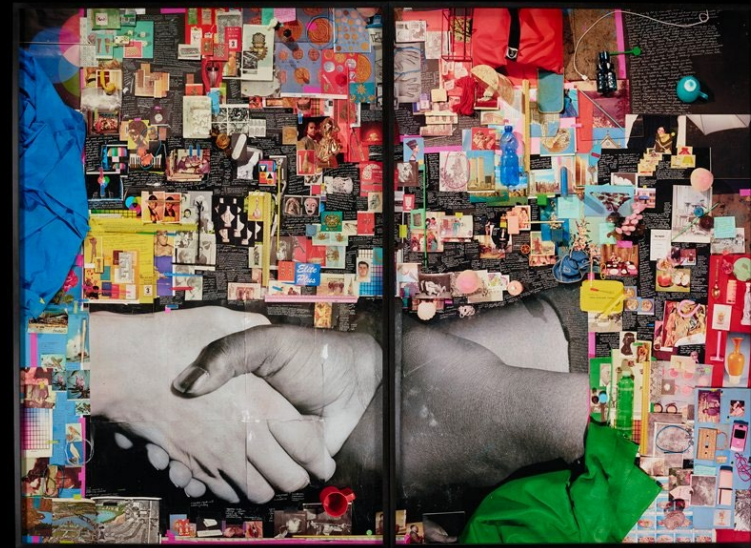
- Share pertinent tour information.
- Coordinate and assign tour routes. Check the Daily List or Biweekly schedule (posted on the [Calendars](#) page or in the Guide Lounge) for other tours at the same time that might affect your group.
- Arrange to meet in Target Atrium 10 to 15 minutes before your tour to discuss last-minute arrangements.



Lead guide responsibilities

Step 3: On the day of your tour:

- Arrive in the Target Atrium 15 minutes before your tour.
- Introduce and assign guides to tour groups.
- Greet your tour group.
- Distribute evaluation forms when requested by Learning staff.
- If school arrives late, establish the tour end-time and inform all guides.



Lead guide checklist as well as contact form letters are available on the guide website, [link here](#).

The screenshot shows the 'Mia Guides' website interface. On the left, there is a search bar with a magnifying glass icon, a text input field, and a 'Search' button. The main content area features a post titled 'Form letters and checklist for lead guides (revised 10.26.22)' with an 'Edit' button. Below the title, there is a list of tags: 'in Forms and Procedures (School Tours) / School Guides tagged form letter docent / lead docent letter to tour contact / lead guide / school tour form letter / tour contact form letter / VTS tour form letter'. The post text includes: 'Here is the checklist of responsibilities if you are a lead guide on a school tour: [Lead Guide Checklist for School Tours \(rev. 10.26.22\)](#)', 'Attached are form letters for lead guides to send to tour contacts. (We now have a direct link in the letter to the [Social Narratives](#) posted on the artsmia.org site):', 'Topic tour (for example, a Highlights tour or Art & Identity): [Form letter to send tour contacts \(rev 10.26.2022\)](#)', 'Art Adventure tour: [Form letter to send Art Adventure tour contact \(rev 10.26.2022\)](#)', 'Here are the Tour Guidelines (English language) you can also send your tour contact: [LIN221358 Update Guided Tour Guidelines_FINAL](#) or the Guidelines in all 4 languages: English, Somali, Spanish, and Hmong: [Combined Guided Group Guidelines](#)'. On the right side, there is a 'Recently added to the site:' section with three links: 'Click on this link to access the resource page for StaffSavvy training.', 'Click on this link to access the exhibition resource page for Botticelli.', and 'Click on this link to access Mia Guide training videos.', followed by 'Click on this link to access our Virtual Tour Resource page.'

Let's talk subs for the Art Adventure sets!

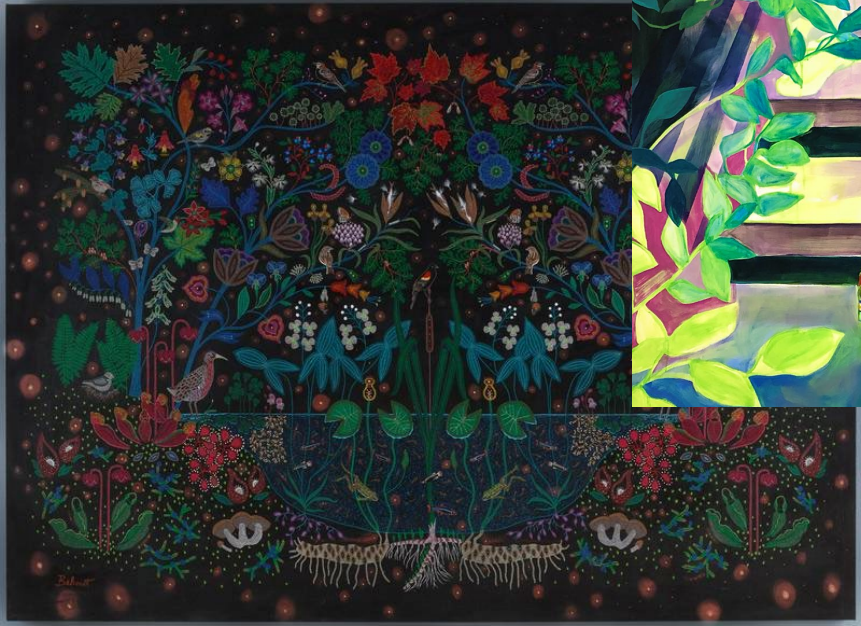
Beginning in mid-October/early November, Galleries 301 to 304 will be closed at times for reinstallation of a new exhibition: Reimagining Native/American Art. Some AA works will go off view. (Oct. 26 training!)



Here are the works from AA sets which will be part of the reinstallation, opening November 11:



Also in Reimagining Native/American Art are some school guide favorites:



Subs are a great way to add something new for the group! Pick a substitute that fits the theme AND your assigned route!

Wendy Red Star, G261



Virgil Ortiz,
G259



Jackie Larson Bread, G259

Subs are a great way to add something new for the group! Pick a substitute that fits the theme AND your assigned route!

Growing Thunder Collective, G259



Tsistsistas (Cheyenne) or Lakḥóta Headdress, G261



Myrlande Constant, G255

Subs are a great way to add something new for the group! Pick a substitute that fits the theme AND your assigned route!

Ueda Kōchū, G237



James Barnor. G365



Michelangelo Pistoletto, G365

Other sub ideas to share?

Nudity and other concerns.

Jim Denomie exhibition...plan for moving groups through second floor.



Nudity and other concerns! Jim Denomie exhibition...



Beware Peace
Concluded
location...G357



Small informational label on the wall.



Possible statements on nudity:

“Artists believe the human body is a beautiful thing. For these reasons, artists often show people who are nude in their works of art.”

(Milwaukee Art Museum) Also, can examine our hands and kids see the complexity--and challenge to realistically depict humans. But reassure students that they never have to look at anything they do not wish to look at.

If they are giggling, acknowledge the nudity and say “sometimes we may see things in the museum that embarrass us, but you can just look away if you are uncomfortable.” Move on.

Possible statements on nudity:

Acknowledge that kids may be surprised to see some artworks that have nude people. There are different ways of depicting the human body all around the world and through time, so this is just part of visiting an art museum. But you can always look away at anything that makes you uncomfortable. You control your own eyes!

To acknowledge with chaperones, Mia has artworks from many cultures and time periods, so we may walk by some art that is distracting for the kids-- and even for adults! Please help me keep the group together as we move between tour stops and keep the kids focused on the artworks we want to discuss on the tour. No one has to look at any art that makes them feel uncomfortable.

Other ideas?

Questions?



Thank you!

Clara Gardner Mairs,
Halloween, 1920, 45.34

